

INDIGO — SWEDEN YACHTS



Builder: SWEDEN YACHTS

Year Built: 1991

Model: Cruising Sailboat

Price: PRICE ON APPLICATION

Location: United Kingdom

LOA: 39' 0" (11.89m)

Beam: 12' 8" (3.86m)

Min Draft: 5' 8" (1.73m)

Cruise Speed: 6 Kts. (7 MPH)

Max Speed: 8 Kts. (9 MPH)

Our experienced yacht broker, Andrey Shestakov, will help you choose and buy a yacht that best suits your needs **INDIGO — SWEDEN YACHTS** from our catalogue. Presently, at Shestakov Yacht Sales Inc., we have a wide variety of yachts available on our sale's list. We also work in close contact with all the big yacht manufacturers from all over the world.

If you would like to buy a yacht **INDIGO — SWEDEN YACHTS** or would like help answering any questions concerning purchasing, selling or chartering a yacht, please call **+1(954)274-4435**

TABLE OF CONTENTS

TABLE OF CONTENTS	2
SPECIFICATIONS	4
Overview	4
Basic Information	4
Dimensions	4
Speed, Capacities and Weight	4
Accommodations	4
Hull and Deck Information	5
Engine Information	5
DETAILED INFORMATION	6
Manufacturer's Comments	6
Construction	6
Machinery	7
Electrical Systems	8
Plumbing Systems	9
Tankage	9
Navigation Equipment	10
Domestic Equipment	11
Accommodation	12
Deck Equipment	14
Exclusions	18
Disclaimer	18
PHOTOS	19
CONTACTS	24
Contact details	24
Telephones	24
Office hours	24
Address	24

SPECIFICATIONS

Overview

Much loved example from 1991 sporting the uber desirable wing keel, lots of notable updates making her a very good to go yacht.

Basic Information

Category: Cruising Sailboat

Model Year: 1991

Year Built: 1991

Country: United Kingdom

Dimensions

LOA: 39' 0" (11.89m)

LWL: 31' 6" (9.60m)

Beam: 12' 8" (3.86m)

Min Draft: 5' 8" (1.73m)

Speed, Capacities and Weight

Cruise Speed: 6 Kts. (7 MPH)

Max Speed: 8 Kts. (9 MPH)

Displacement: 16755.131912 Pounds

Water Capacity: 100.38537976 Gallons

Holding Tank: 21.13376416 Gallons

Fuel Capacity: 39.6258078 Gallons

Accommodations

Total Cabins: 2

Total Berths: 7

Total Heads: 1

Hull and Deck Information

Hull Material: GRP

Deck Material: GRP

Hull Finish: Stainless Steel

Hull Designer: P Norlin / J Ostmann

Engine Information

Engines: 1

Manufacturer: Beta

Engine Type: Inboard

Fuel Type: Diesel

DETAILED INFORMATION

Manufacturer's Comments

A yacht in the luxury range: Clean, elegant lines together with generous space on deck and below makes this yacht an excellent representative of the Sweden Yacht philosophy.

The search for perfection in every detail is found in the quality of finish, the functional layout and the integrity of construction.

The 390 is designed for safe shorthanded sailing with clean deck lines and a comfortable efficient cockpit. It offers you three separate cabins in addition to the main salon and has a large, luxurious "bathroom". Also a proper nav station, well-functioning pantry and ample locker space throughout the boat.

Construction

RCD Status: Our understanding is that the yacht is exempt from the essential safety requirements of Directive 94/25EC (Recreational Craft Directive) as she was built and placed into use within the EU prior to 1998.

Hull Construction:

- End grain balsa core sandwich using fibreglass mat and roving on both sides, giving a light, rigid and well-insulated hull.
- Balsa core is used from the toe rail to below the waterline. Solid laminate is used in high stress areas around the keel, mast foot and the joint between the two hull halves.
- Bottom reinforcements are longitudinal and transversal solid laminate design.
- White gelcoat with blue gelcoated stripes.
- Blue waterline hull stripe.
- Blue antifoul.

Deck & Superstructure Construction:

- The deck is moulded in fibreglass with end grain balsa core sandwich. Stress areas where winches and major deck fittings are fixed, are reinforced by replacing the balsa core with plywood, or by using backing plates or large diameter washers.
- The hull and deck is bonded together using polyester filler. The alloy toerail is then bolted through the hull and deck flange, using special sealing material.
- All main bulkheads are bonded to the hull and deck using glassfibre and polyester.
- Teak laid deck and coachroof with additional teak laid cockpit sole, cockpit seating and bathing platform.
- Decks continuously maintained.

Keel & Rudder:

- Wing keel with lead ballast externally bolted to hull using stainless steel bolts.
- Balanced GRP spade-rudder, designed for comfortable cruising and easy maneuvering supported by two ball bearings and a lower bronze bearing.

Machinery

Engine & Gearboxes:

- Beta 38 HP 4 cylinder marine diesel engine – new 2014.
- High torque across the entire rev band and low emissions are important characteristics.
- Freshwater cooling system via raw water intake and heat exchanger.
- Volvo Saildrive gearbox – 2014.

Maintenance & Performance:

- Engine hours: approx. 90.
- Engine serviced at end of running in period – July 2014.
- Saildrive diaphragm replaced 2014.
- Cruising speed: approx. 6 knots.
- Max speed: approx. 8 knots.

Propulsion & Steering:

- 3 blade feathering Kiwi prop – new blades and serviced 2014.
- Stripper rope cutter 2007.
- Chain & wire steering connection connected to hydraulic autopilot ram.
- Autopilot ram serviced 2012.
- Edeson white powder-coated helm pedestal with large-diameter hide-covered stainless steel wheel.
- Emergency steering gear.

Electrical Systems

Voltage Systems:

- 12vDC domestic system with 230vAC ring main from shorepower.

Battery Banks:

- 1x 12v 80Ah engine start battery – 2014.
- 3 x 12v 80Ah service batteries joined in parallel – 2013.
- Battery monitoring system – 2014.

Battery Chargers:

- Xantrex battery charger powered through shorepower.

Alternators:

- High output 115A engine mounted alternator – 2014.

Shore Power:

- Siemens 230vAC 16 Amp shore supply.

Other Electrical:

- Rutland 913 wind generator mounted on s/s pole at transom – 2010 (serviced & new bearings 2013).
- 230vAC ring main with sockets internally + shaving socket in heads.
- Main AC/DC control panel with analogue voltmeter.
- 12vDC socket at chart table.
- Sterling 12/220v inverter.

Plumbing Systems

Fresh Water & Water Heating System:

- 12vDC pressurised Jabsco water pump for supplying fresh water – 2010.
- Hot water supply via engine calorifier and 230vAC immersion heater element in 22 litre hot water tank powered by shorepower.

Bilge Pumps:

- 12vDC electric bilge pump.
- Manual bilge pump in aft cabin.
- Manual bilge pump in cockpit.

Grey & Black Water:

- Grey water discharged directly overboard via gravity or 12vDC pump out.
- Blackwater discharged directly overboard or to holding tank.

Tankage

- Analogue water & fuel level gauges.

- Stainless steel deck fillers for fuel tanks and fresh water tank.

Fuel:

- 150 litres (33 gallons) in one stainless steel fuel tank.

Fresh water:

- 380 litres (84 gallons) in two stainless steel water tanks.

Grey/Blackwater holding tanks:

- 80 litres (17.6 gallons) blackwater holding tank for heads.

Navigation Equipment

At chart table:

- Raymarine E120 12" plotter – 2007.
- Raymarine radar integrated to plotter with closed array scanner on mast – 2007.
- Comar AIS transponder integrated to plotter – 2012.
- B&G Hydra multi-repeater.
- Clock & barometer on main bulkhead (SBD) – 2014.
- Hygrometer / thermometer (PORT).

Communications Equipment:

- Standard Horizon VM-3500E DSC VHF – 2007.
- Standard Horizon command microphone at helm – 2007.

At Companionway:

- B&G Hydra speed & depth display.
- B&G Hydra wind speed display.
- B&G Hydra wind direction display.
- NASA GPS / waypoint info repeater.

At Helm:

- B&G Hydra multi repeater.
- B&G Hydra autopilot controller.
- Riviera White Star binnacle compass.

Domestic Equipment

Galley:

- Eno stainless steel gimballed 2-burner stove with oven – 2007.
- Top-opening fridge (cooling plate 2014) with 12vDC Stone Cold compressor (2006).
- Twin stainless steel sinks with hot & cold pressurised water supply.
- Manual fresh & salt water supplies to galley.

Heads/Showers:

- Manual marine heads.
- Basins hot & cold water supply with shower attachment.
- Mirrored storage, storage under sinks and additional fitted over heads.

Heating & Ventilation:

- Eberpsacher D5 diesel-fired hot-air cabin heating with outlets throughout interior – 2010.
- Dorade vents in salon and forecabin.
- Air-vent in heads.

- Opening deckhead hatches in saloon, forward cabin and heads.
- Opening portlights to cockpit in aft cabins.

Entertainment:

- Sony MEX-BT3900U radio / CD / Bluetooth device connection – 2014.
- Switchable speakers in saloon and in cockpit.
- Jensen cockpit speakers 2014.

Lighting:

- 12vDC halogen lights inset to deckhead with additional reading lights throughout.
- Night lighting below decks.
- Spotlights in sleeping cabins – 2014.

Accommodation

Summary of Accommodation:

- 7 berths in 2 cabins and saloon.
- Interior joinery in Mahogany and satin varnished throughout
- Varnished teak soleboards with holly inlays
- Matching varnished headlinings with mahogany battening
- Wooden battening to exposed hull sides
- Cloth curtains
- Blue fabric upholstery in all cabins
- Solid handrails throughout the interior for easy movement offshore
- Grey speckled Corian countertops in galley, shower grate and shower seat in heads
- Centre table with storage and cupboards cut out for glasses.

Description of layout from forwards:

Forward Cabin:

- Spacious double-berth utilizing full width of the cabin.
- Large sail stowage under berths, easily accessible via fold-up berth bottom boards.
- Shelves with dividers along hullsides to port and sb.
- Double hanging lockers, locker with shelves and drawers and a seat on port side, across from toilet cabin.
- 230v socket and heater outlet.

Heads Compartment:

- Entire moulded compartment fitted between bulkheads.
- Two lockers with mirrored doors above wash basin unit.
- Two recessed mirrors in forward sections.
- Recess for toilet with fold-away extra seat.
- Corian shower grating, Shower drained by electric pump.
- Towel hangers.
- Doors to both forward cabin and saloon.

Saloon:

- L-shaped settee on both sides (water tanks below).
- Stowage behind backrests.
- Table with fold-down wings and built-in bar in fixed mid section.
- Drawers in aft end of table.
- Cabinets and bookshelves above sofas on both sides of saloon.
- Doors to forward cabin and toilet.

- Access to bilge, additional storage under cabin sole.

Galley:

- L-shaped galley with Corian counter top.
- Large capacity fridge in GRP with Plexiglas dividers, drained to a separate sump.
- Drawer section, cuttingboard, dry food locker.
- Gas stove with two burners and oven.
- Double overhead cupboards.
- Waste basket and storage below sink.

Navigation Area:

- Large navigation table with stowage.
- Moulded, detachable instrument panel for electronic equipment on hinges for easy service access.
- Electrical master panel included.
- Separate chart stowage space above instrument-panel.
- Adjustable navigation seat with storage under.

Aft Cabins:

- Starboard cabin with generous single berth, stowage shelf along hullside, plus hanging locker.
- Port cabin with large double bed, access to hot water tank and diesel tank, seat with stowage under, and a wide hanging locker.
- Stowage lockers with doors along hullside.
- Doors from main saloon to each cabin.

Deck Equipment

Rig:

- Selden Spars silver anodised aluminium alloy keel-stepped mast.
- Masthead rig with two sets of in-line spreaders.
- Selden rod vang.
- Selden genoa furler.
- Stainless steel rod standing rigging.
- Running rigging – continuously upgraded.
- Stainless steel rod backstay with Navtec hydraulic adjustment & backstay isolators fitted ready for SSB antenna attachment.
- Babystay.
- Checkstays.
- Alloy rigging covers for shroud bases.
- Slab reefing system, lead back to cockpit.
- Lazyjacks with stackpack bag (2007).
- Genoa tracks with additional cars.
- Selden aluminium spinnaker pole with associated equipment.
- Mainsheet system led back to dedicated winches on both sides of cockpit close to helm.
- Mainsheet track system on coachroof, adjustable from helm.

Winches:

- 2x Lewmar 56 electric powered + 2-speed manual self-tailing primary winches (genoa).
- 2x Lewmar 40 2-speed self-tailing manual secondary winches (mainsheet).
- 2x Lewmar 46 2-speed self-tailing manual winches (spinnaker / checkstays).
- 2x Lewmar 43 2-speed self-tailing manual winches (halyards reefing).
- 1 x Lewmar 40 self-tailing manual winch (on mast).

Sails:

- North Sails fully-battened mainsail – approx 2002.
- Hyde Sails tri radial laminate / tafeta 135% furling genoa – 2010.
- North Sails storm jib.
- Nylon spinnaker.
- Nylon cruising chute.
- Spinnaker snuffer with jamb cleat system – 2007.
- Miscellaneous old / spare sails inc mainsail & genoa.
- I= 16.2m, J=4.8m, P=14.9m, E=4.25m.

General:

- Teak deck continuously maintained and in good condition.
- Teak grabrails on main superstructure coachroof.
- Stainless steel guardrail stanchions with twin stainless steel wire guardwires.
- Stainless steel pulpit and pushpit with teak step.
- Stainless steel removable pulpit mounted boarding ladder.
- Stainless steel folding transom ladder.
- Cockpit table.
- Deep starboard/port lockers with stainless steel grab rails/hangers.
- Stainless steel dorade pulpits on coachroof.
- Gas storage locker (drained) in centre.
- Hot and cold cockpit shower fitted in aft centre cockpit locker.
- Cold pressurized water supply / hose fitted in bow anchor locker.
- Outboard motor bracket on pushpit.

Anchoring & Mooring Equipment:

- Lewmar 12v reversing anchor windlass.
- Kobra anchor – 2011.
- 60m chain (2014).
- Stainless steel stemhead fitting with double anchor rollers.
- Mid-cleats for mooring.
- Warps and fenders.
- Shelf built into anchor locker for fender stowage.

Covers, Canvas & Cushions:

- Beige canvas sprayhood with stainless steel frame and hide-covered grabrail – 2007.
- Beige canvas cockpit awning – 2014.
- Pushpit cushions.

Safety Equipment:

- Horsehoe lifebuoy with drogue.
- Danbuoy with light.
- MOB recovery lifesling.
- Throw line.
- Offshore flarepack – 2014.
- Wire safety lines running full length of deck on both sides.
- Blipper radar reflector.
- Pulpit navigation lights (LED 2013), stern light, masthead tri-colour and deck flood light (2013).

Fire-fighting equipment:

- Fire-extinguishers.

- Fire blanket.

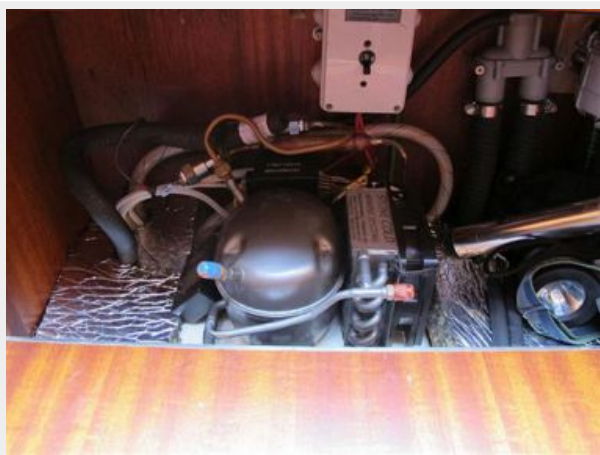
Exclusions

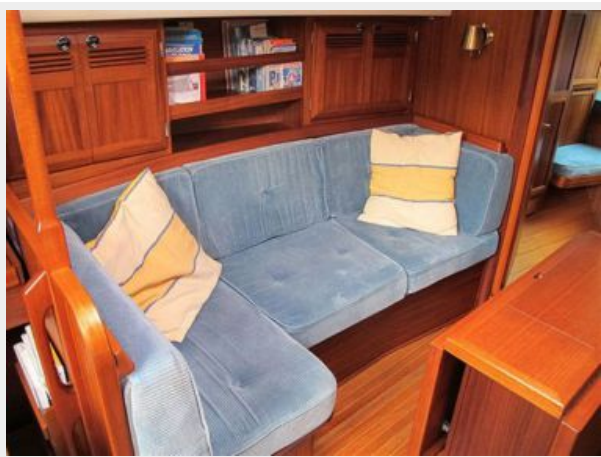
Owner's personal belongings.

Disclaimer

The Company offers the details of this vessel or yacht in good faith but cannot guarantee or warrant the accuracy of this information nor warrant the condition of the vessel. A buyer should instruct his representatives, agents, or his surveyors, to investigate such details as the buyer desires validated. This vessel or yacht is offered subject to prior sale, price change, or withdrawal without notice.

PHOTOS











CONTACTS

Andrey Shestakov, leading yacht broker of the sales department of Shestakov Yacht Sales Inc. Shestakov Yacht Sales Inc., the official representative of the Miami/Fort Lauderdale FL headquarters.

Contact details

Email: andrey@shestakovyachtsales.com

Web: shestakovyachtsales.com/en/

Telephones

USA: +1(954)274-4435

Office hours

Monday – Saturday: **9:00 - 21:00** EDT

Sunday: **closed**

Address



Harbour Towne Marina, 850 NE 3rd St,
STE 213, Dania, FL 33004