

# NORTHERN LIGHTS — OCEAN ALEXANDER



**Builder:** OCEAN ALEXANDER

**Year Built:** 2003

**Model:** Motor Yacht

**Price:** PRICE ON APPLICATION

**Location:** United States

**LOA:** 42' 0" (12.80m)

**Beam:** 14' 8" (4.47m)

**Max Draft:** 4' 0" (1.22m)

**Cruise Speed:** 15.641572356 Kts. (18 MPH)

**Max Speed:** 18.248501082 Kts. (21 MPH)

Our experienced yacht broker, Andrey Shestakov, will help you choose and buy a yacht that best suits your needs **Northern Lights — OCEAN ALEXANDER** from our catalogue. Presently, at Shestakov Yacht Sales Inc., we have a wide variety of yachts available on our sale's list. We also work in close contact with all the big yacht manufacturers from all over the world.

If you would like to buy a yacht **Northern Lights — OCEAN ALEXANDER** or would like help answering any questions concerning purchasing, selling or chartering a yacht, please call **+1(954)274-4435**

---

# TABLE OF CONTENTS

---

TABLE OF CONTENTS	2
SPECIFICATIONS	5
Overview	5
Basic Information	5
Dimensions	5
Speed, Capacities and Weight	5
Accommodations	5
Hull and Deck Information	6
Engine Information	6
DETAILED INFORMATION	7
Salon	7
Galley	7
Master Stateroom	7
Master Head	7
Forward Stateroom	7
Guest Head	8
Helm	8
Flybridge	8
Electronics	8
Electrical System	9
Deck	9
Mechanical Equipment	9
Aft Deck	9
Disclaimer	9
Exclusions	9
Disclaimer	10
PHOTOS	11
Dinette	11

Galley	11
Master Stateroom	11
Flybridge Helm	11
Salon	11
Galley	11
Galley	12
Master Stateroom	12
Master Stateroom	12
Master Stateroom	12
Master Head	12
Forward Stateroom	12
Guest Head	13
Forward Stateroom	13
Electrical and Entertainment	13
Flybridge Electronics	13
Flybridge Electronics	13
Lower Helm	13
Lower Helm	14
Aft Deck Davit	14
Flybridge	14
Flybridge	14
Flybridge	14
Bow Pulpit	14
Flybridge	15
<b>CONTACTS</b>	<b>17</b>
Contact details	17
Telephones	17
Office hours	17
Address	17



---

# SPECIFICATIONS

---

## Overview

---

"Northern Lights" is a true gentleman's cruiser. Meticulously maintained by knowledgeable owner and discerning captain. She has low hours on twin CAT diesel motors, and dependable Northern Lights generator (8KW). Spacious flybridge with updated electronics. She is truly ready to cruise to her next destination.

## Basic Information

---

**Category:** Motor Yacht

**Sub Category:** Double Cabin

**Model Year:** 2003

**Year Built:** 2003

**Country:** United States

**Fly Bridge:** Yes

## Dimensions

---

**LOA:** 42' 0" (12.80m)

**Beam:** 14' 8" (4.47m)

**Max Draft:** 4' 0" (1.22m)

## Speed, Capacities and Weight

---

**Cruise Speed:** 15.641572356 Kts. (18 MPH) **Max Speed:** 18.248501082 Kts. (21 MPH)

**Displacement:** 34200 Pounds

**Water Capacity:** 160 Gallons

**Holding Tank:** 60 Gallons

**Fuel Capacity:** 600 Gallons

## Accommodations

---

**Total Cabins:** 2

**Total Berths:** 3

**Sleeps:** 4

**Total Heads:** 2

---

## Hull and Deck Information

---

**Hull Material:** Fiberglass

**Hull Configuration:** Semi-Displacement

**Hull Color:** White

**Hull Designer:** Ed Monk Jr

---

## Engine Information

---

**Engines:** 2

**Manufacturer:** Caterpillar

**Model:** 3126TA

**Engine Type:** Inboard

**Fuel Type:** Diesel

---

## DETAILED INFORMATION

---

### Salon

---

- Teak parquet flooring through out
- Reverse cycle A/C
- L-shaped leather settee converts to additional bunk
- Teak hi-lo table
- entertainment center with TV and Sony stereo
- Sea Tel Direct TV

### Galley

---

- Galley is separated from Salon with counter top and overhead storage
- Norcold refrigerator/freezer 110V/12V
- 3 burner Princess cook top and oven
- GE microwave/convection oven
- U line ice maker
- Abundant storage and counter tops

### Master Stateroom

---

- Center line, full beam master
- Hanging lockers
- Custom mattress
- Vanity with stool

### Master Head

---

- Vacu flush head
- Stall shower
- Vanity with storage

### Forward Stateroom

---

- V-berth
- Anchor locker
- Overhead hatch with screen and shade
- Hanging locker

---

## Guest Head

---

- Vacu flush head
- Stall shower
- Vanity/mirror
- Storage

---

## Helm

---

- Thruster controls
- Danforth compass
- Spot light control
- Tank watch guage
- Fireboy control
- Rudder indicator
- Full electronics package
- Teak destroyer wheel

---

## Flybridge

---

- 2 Raymarine L90 Screens
- Northstar 952X
- Simrad AP
- B & G Network
- ICOM VHF with hailer
- L-shaped lounge with large fiberglass dining table with storage below
- 2 Todd helm chairs
- Bimini top with EZZCY 4 side enclosure

---

## Electronics

---

- 2 Raymarine L90 display screens
- Radar and chart plotter
- Northstar 952X chart plotter
- Simrad AP
- RCL 100 spotlight
- Side power bow and stern thruster
- ICOM VHF M502 with hailer
- B & G network quad



---

## Electrical System

---

- 8KW Northern Lights generator w/sound shield
- 16000 BTU AC/reverse cycle
- 50 amp shore cord
- Heart 2500 inverter
- Battery charger
- 12V/120 distribution panel

---

## Deck

---

- 45 lb. Plow anchor
- Maxwell windlass w/all chain rode 150'
- Quick lift davit
- 11' dinghy w/6hp Mercury outboard
- Forward wash down
- Dockside water connection
- Hinged antenna mast
- Kahlenberg air horns
- Cockpit shower
- Swim board with ladder

---

## Mechanical Equipment

---

Bow and Stern thruster

---

## Aft Deck

---

Inflatable dinghy with 6HP Mercury outboard

---

## Disclaimer

---

The Company offers the details of this vessel in good faith but cannot guarantee or warrant the accuracy of this information nor warrant the condition of the vessel. A buyer should instruct his agents, or his surveyors, to investigate such details as the buyer desires validated. This vessel is offered subject to prior sale, price change, or withdrawal without notice.

---

## Exclusions

---

Owner's personal belongings.

## Disclaimer

---

The Company offers the details of this vessel or yacht in good faith but cannot guarantee or warrant the accuracy of this information nor warrant the condition of the vessel. A buyer should instruct his representatives, agents, or his surveyors, to investigate such details as the buyer desires validated. This vessel or yacht is offered subject to prior sale, price change, or withdrawal without notice.

# PHOTOS

**Dinette**



**Galley**



**Master Stateroom**



**Flybridge Helm**



**Salon**



**Galley**



**Galley**



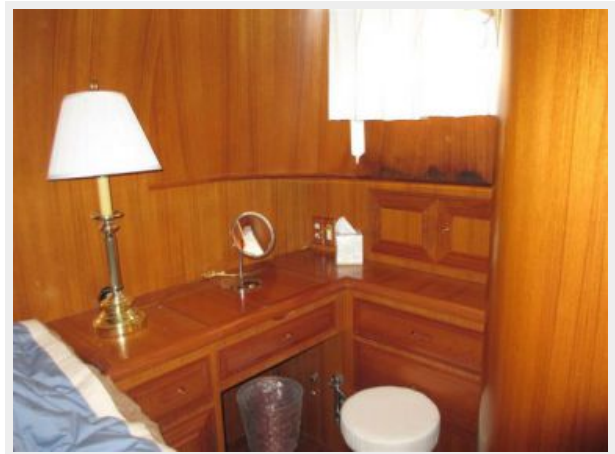
**Master Stateroom**



**Master Stateroom**



**Master Stateroom**



**Master Head**



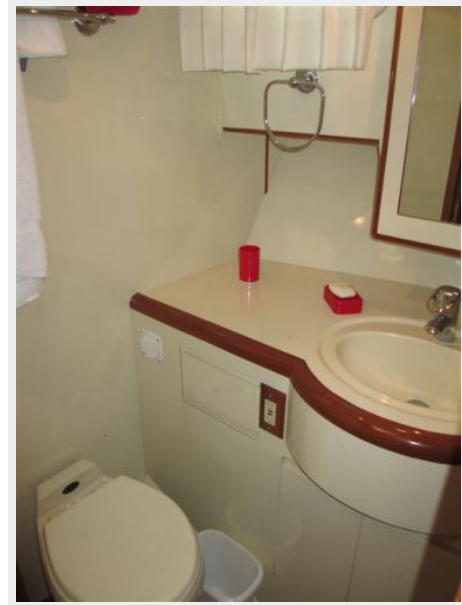
**Forward Stateroom**



**Forward Stateroom**



**Guest Head**



**Electrical and Entertainment**



**Flybridge Electronics**



**Flybridge Electronics**



**Lower Helm**



**Lower Helm**



**Aft Deck Davit**



**Flybridge**



**Flybridge**



**Flybridge**



**Bow Pulpit**



## Flybridge







# CONTACTS

---

Andrey Shestakov, leading yacht broker of the sales department of Shestakov Yacht Sales Inc. Shestakov Yacht Sales Inc., the official representative of the Miami/Fort Lauderdale FL headquarters.

## Contact details

---

Email: [andrey@shestakovyachtsales.com](mailto:andrey@shestakovyachtsales.com)

Web: [shestakovyachtsales.com/en/](http://shestakovyachtsales.com/en/)

## Telephones

---

USA: +1(954)274-4435

## Office hours

---

Monday – Saturday: **9:00 - 21:00** EDT

Sunday: **closed**

## Address

---



Harbour Towne Marina, 850 NE 3rd St,  
STE 213, Dania, FL 33004