

NO NAME — CUSTOM



Судостроитель: CUSTOM

Год постройки: 2003

Модель: Катер для спортивной рыбалки

Цена: **ЦЕНА ЯХТЫ ПО ЗАПРОСУ**

Местонахождение: United States

Длина общая: 40' 0" (12.19m)

Ширина: 11' 4" (3.45m)

Крейс. скорость: 33 Kts. (38 MPH)

Макс. скорость: 50 Kts. (58 MPH)

Купить **No Name — CUSTOM** а также выбрать подходящую вам яхту из нашего каталога яхт вам поможет опытный яхтенный брокер Андрей Шестаков. На сегодняшний день компания **Shestakov Yacht Sales Inc.** имеет большое количество яхт в **собственном списке продаж**, а также тесно сотрудничает со всеми крупными яхтенными производителями по всему миру.

Для того чтобы купить яхту **No Name — CUSTOM** а также проконсультироваться по любому вопросу связанному с покупкой, продажей, чартером яхт позвоните по телефону **+7(918)465-66-44**.

ОГЛАВЛЕНИЕ

ОГЛАВЛЕНИЕ	2
ХАРАКТЕРИСТИКИ	4
Основная информация	4
Размеры	4
Скорость, вместимость и масса	4
Размещение	4
Корпус и палуба	4
Информация о двигателе	4
ПОДРОБНОЕ ОПИСАНИЕ	5
General Details	5
Vessel Walkthrough	5
Remarks	7
Исключения	7
Отказ от ответственности	8
ФОТОГРАФИИ	9
Cockpit	9
Cockpit	9
Cockpit	10
Cockpit	10
Tackle Storage	10
Bow	10
Breaker Panel	10
Cabin Aft	10
Galley	11
Master	11
Head	11
Master	11
Head	12

Head	12
Guest Queen Berth	12
Bridge	12
Bridge	12
Bridge	12
Helm	13
Port Lounge	13
Tower Helm	13
Tower Seat	13
Tower	13
Tower	13
Stabilization Chamber	14
Tower	14
Suzukis	14
КОНТАКТЫ	15
Контактная информация	15
Телефоны	15
Время работы	15
Адрес	15

ХАРАКТЕРИСТИКИ

Основная информация

Тип судна: Катер для спортивной рыбалки

Подкатегория: Express

Модельный год: 2003

Год постройки: 2003

Страна: United States

Размеры

Длина общая: 40' 0" (12.19m)

Ширина: 11' 4" (3.45m)

Скорость, вместимость и масса

Крейс. скорость: 33 Kts. (38 MPH)

Макс. скорость: 50 Kts. (58 MPH)

Размещение

Всего кают: 2

Корпус и палуба

Материал корпуса: Composite

Информация о двигателе

Двигатели: 3

Производитель: Suzuki

Модель: Four Stroke

Тип двигателя: Outboard

Тип топлива: Gas

ПОДРОБНОЕ ОПИСАНИЕ

General Details

Outback Boat Company is a generation ahead in design, materials, and construction methods equating to truly unique and superior vessels. Custom built for a knowledgeable owner by a team of skilled marine craftsmen from South Florida. This boat has fished extensively from the Turks and Caicos up to the Outer Banks.

The Outback's design evolved from years of research on various layouts, construction methods, and creature comforts to develop a one of a kind masterpiece on the seas.

A 24 1/2 ° entry deadrise and 11' 4" beam knife through the water effortlessly. This boat was built to take on rough water. It's hull is an epoxy impregnated core with a fiberglass and carbon laminate schedule which makes her lightweight and tough! At only 11,000 lbs, it is half the weight of its express competitors.

The patented "water ballast" system utilizes a unique chamber that is located centerline down the bottom of the hull which fills with seawater when "off plane" thus creating a heavier stabilized (anti-roll) boat in the trough. When powering up on plane the seawater effortlessly slips out of the chamber on the bottom allowing for a faster, lighter, dryer and more fuel efficient ride than any of its competitors! This design has zero effect on the hull integrity thus maintaining the same strength ratio to the hull.

Her optimum cruise is at 38 MPH burning 33 GPH with a top speed of 58 MPH with 375 gallons of fuel getting 1.15 miles per gallon you will have the range of over 400 nautical miles. Unbeatable fuel economy for a luxurious outboard express sportfish!

Vessel Walkthrough

The interior volume of this vessel is unmatched: Huge head that 4 people could stand in, second stateroom that sleeps 2 comfortably, queen master bed forward, 6'5" headroom in the cabin. The transom bracket is flush mounted with a flat surface area leading to a "tuna door" with access to the cockpit. A very clean finish with no gaps, housings, or hoses to trip on or damage. Entering the self-bailing cockpit, you will notice a very functional layout for running a clean and efficient fishing operation. Two tackle lockers are located on the cockpit bulkhead, swinging doors facing aft. Storage lockers on either side of the hull under the gunnels for cleaning supplies, chamois, gaffs, brushes, etc. Under the gunnel, you will also find easy access for fresh and salt water wash down hoses. In the deck are two removable macerated fish boxes. Located aft on the transom is a beautifully crafted live-well capable of keeping large quantities of bait alive for extended running periods. Moving forward, there is a step with bracket providing access to the helm area. At first glance, you may feel the step is higher than necessary but when you enter the helm area and forward cabin, you immediately understand the reasoning -- beautiful panoramic

line of sight over the entire vessel with excellent range of vision over the bow of the boat. Looking forward, the helm station is located on the starboard side. Full Furuno Electronics package built into a hydraulic recessing hatch typical of clean custom builders. Captain's seating for two is at the helm. Located on the port side is a comfortable L shaped bench with seating room for six passengers. Located amidships is a deck hatch, similar to an engine compartment for diesel express boats, which folds up and aft. Here you will find an enormous amount of additional storage space and access to the boat's systems, generator and batteries. All the systems were expertly designed and planned for easy access and maintenance. Similar to the standards found in production builders such as Viking, Cabo or Jupiter. Moving forward, step down into the cabin space and get a feel for the true size of the vessel. Approximately 25% more interior volume compared to similar sized vessels with head room for a 6'5" person. There is a galley located on the port side with new Corian countertops, a microwave, two burners, stainless sink, refrigerator, and storage compartments. Across from the galley is where the head is located. Looking forward is a recessed open stateroom with a queen sized, brand new Tempur-Pedic mattress. Located on either side of the open stateroom is rod locker storage, hanging closet, and additional storage compartments. There is storage under the bed as well. Looking aft, under the stairway is another sleeping quarter semi enclosed by a bulkhead and surprisingly roomy suited for two guests. The cabin is air-conditioned by a 16,000 BTU unit. This vessel is equipped with Double Spreader Rupp Riggers and a High Seas Tower. The second helm station in the tower is equipped with full Furuno Electronics and controls.

Galley

Microwave Stainless Sink - New Twin Burners - New Storage lockers 110v outlets Refrigerator

Head

Wet head located on the starboard side of vessel across from the galley (Head Hunter)

Master Stateroom

Queen size Tempur-Pedic bed A/C TV Numerous storage compartments

Guest Stateroom

Located under stairs Full size bed Half enclosed bulkhead in large crawl space A/C

Deck

5 Step tower with full tower controls and electronics 2 large deck hatches located in the cockpit (160 QT per box) 14 Rod holders total located on gunnel and tower legs 2 Electrical outlets for deep drop reels Fresh Water shower Salt water wash-down Twin tackle storage stations

Electronics & Helm

Furuno Nav Net1 6kw Furuno radar Bow thruster Furuno Auto Pilot

Electrical

30 Amp electrical power cord used for shore power All power systems can be turned on a running while connected to shore power 3 Bilge pumps located aft, midships, and forward with high water alarm 5 batteries 12v DC system Glendenning cable master

Engine Details & Mechanical Equipment

Triple Suzuki Four Stroke Outboards 300HP two with 90 Hours on motors and one with 18 hours. Engines are mounted on individual Jack Plates (Increases efficiency, decreases draft)

New in 2009 Kohler Generator 7KW New in 2009 (100 hours)

Broker's Comments

A truly one-of-a kind custom express Sport Fish. Single owner boat built for a very demanding fisherman. This boat was the center piece "HOT NEW ITEM" at the Ft. Lauderdale International Boat Builders Convention in 2002. It would cost over \$800,000 to replace. Every single item on this vessel is TOP OF THE LINE, MARINE GRADE MATERIAL. The unique hull design is the future in boat building. The owner has fished this boat for the past 13 years and is now ready to move on. Tried and true to its promise, this vessel is now available for the first owner to share in the perfect express boat!!! You will not find another larger express outboard boat that is more fuel efficient or has a better ride.

Remarks

43' Overall length by 11' 4" beam at 11,000 pounds gives this Custom Express Sportfish the ride of a 40' Invincible or Yellowfin with the floor plan of a Viking Express at a fraction of the cost!

APRIL 2014 FULL SERVICE AND REFURBISH OF ALL SYSTEMS

- Repower in 2009/2012
- 2 new Suzuki 300 hp on Jack Plates in 2009
- 1 new Suzuki 300 hp 2012 warranty till 2017
- New AC and water heater
- New batteries
- New bilge pumps
- New deck hatches
- New interior wood finishings
- Hull and topside paint
- New galley refrigerator/freezer

Исключения

При продаже яхты исключаются личные вещи владельца.

Отказ от ответственности

Компания предоставляет описание судна или яхты добросовестно, но не может гарантировать точность этой информации, а также не ручается за техническое состояние. Покупатель должен проинструктировать своих агентов или оценщиков исследовать представленную информацию более подробно, по собственному желанию. Продажа судна или яхты, изменение цены или снятие с продажи будет происходить без предварительного уведомления.

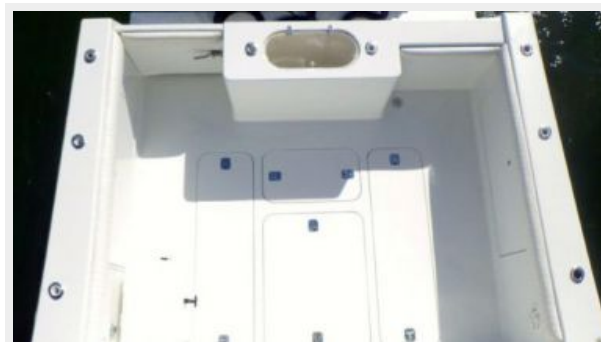
ФОТОГРАФИИ



Сокпит



Сокпит



Cockpit



Cockpit



Tackle Storage



Bow



Breaker Panel



Cabin Aft



Galley



Master



Head



Master



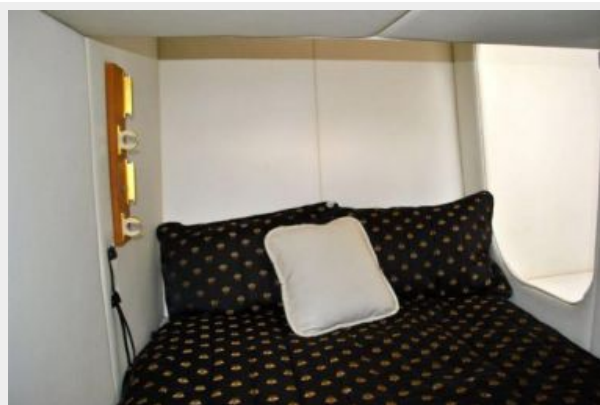
Head



Head



Guest Queen Berth



Bridge



Bridge



Bridge



Helm



Port Lounge



Tower Helm



Tower Seat



Tower



Tower



Tower



Stabilization Chamber



Suzukis



КОНТАКТЫ

Андрей Шестаков (Andrey Shestakov) – ведущий яхтенный брокер отдела продаж яхт и судов компании Shestakov Yacht Sales Inc. Официальный представитель Shestakov Yacht Sales Inc. для русскоговорящих клиентов в центральном офисе компании в Майами/Форт Лодердейл/Флорида/США.

Контактная информация

Email: andrey@shestakovyachtsales.com

Web: shestakovyachtsales.com

Телефоны

Краснодарский край: **+7(918)465-66-44**

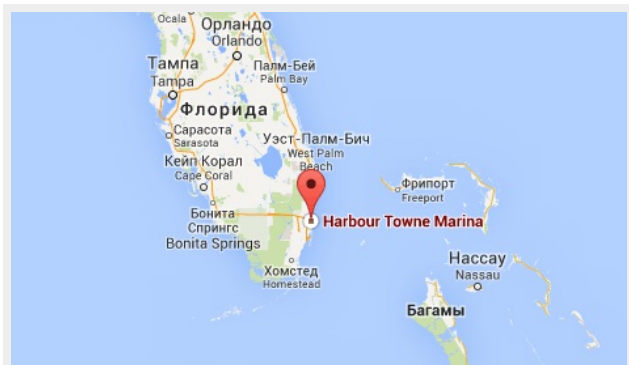
США, Майами, Флорида: **+1(954)274-4435**

Время работы

Понедельник – Суббота: **9:00 - 21:00**
EDT

Воскресенье: **Закрето**

Адрес



Harbour Towne Marina, 850 NE 3rd St,
STE 213, Dania, FL 33004