

SUNRISE — VIKING



Судостроитель: VIKING

Год постройки: 2012

Модель: Катер для спортивной рыбалки

Цена: **ЦЕНА ЯХТЫ ПО ЗАПРОСУ**

Местонахождение: United States

Длина общая: 50' 0" (15.24m)

Ширина: 17' 0" (5.18m)

Мин. осадка: 4' 10" (1.47m)

Крейс. скорость: 32 Kts. (37 MPH)

Макс. скорость: 40 Kts. (46 MPH)

Купить **SUNRISE — VIKING** а также выбрать подходящую вам яхту из нашего каталога яхт вам поможет опытный яхтенный брокер Андрей Шестаков. На сегодняшний день компания **Shestakov Yacht Sales Inc.** имеет большое количество яхт в собственном списке продаж, а также тесно сотрудничает со всеми крупными яхтенными производителями по всему миру.

Для того чтобы купить яхту **SUNRISE — VIKING** а также проконсультироваться по любому вопросу связанному с покупкой, продажей, чартером яхт позвоните по телефону **+7(918)465-66-44**.

ОГЛАВЛЕНИЕ

ОГЛАВЛЕНИЕ	2
ХАРАКТЕРИСТИКИ	5
Обзор	5
Основная информация	5
Размеры	5
Скорость, вместимость и масса	5
Размещение	5
Корпус и палуба	6
Информация о двигателе	6
ПОДРОБНОЕ ОПИСАНИЕ	7
NOTE:	7
Accommodations	7
Master Stateroom, Forward Starboard	7
Guest Stateroom, Forward	7
Guest Stateroom, Forward Port	8
Salon	8
Master Head	8
Guest Head, Forward Port	9
Galley / Laundry, Main Deck, Amidship Starboard	9
Helm / Electronics and Navigation	9
Deck	10
Engine and Mechanical Equipment	10
Electrical System / Equipment	11
Cockpit / Fishing Equipment	11
Salesman's Comments	11
Исключения	11
Отказ от ответственности	11
ФОТОГРАФИИ	13

Profile 1	13
Master Stateroom 1	13
Master Stateroom 2	13
Master Stateroom 3	13
Guest Stateroom, Forward	14
Guest Stateroom, Forward Port	14
Salon 1 - Settee	14
Salon 2	14
Salon 3	14
Salon 4 - Dinette	14
Salon 5	15
Salon 6	15
Master Head	15
Guest Head	15
Galley 2	16
Galley 1	16
Helm / Electronics & Navigation 1	16
Helm / Electronics & Navigation 2	16
Helm / Electronics & Navigation 3	16
Helm / Electronics & Navigation 4	16
Helm / Electronics & Navigation 5 - Radio Box	17
Helm / Electronics & Navigation 6 - Radio Box	17
Helm / Electronics & Navigation 7 - Drop Down Box	17
Helm / Electronics & Navigation 8	17
Deck 1 - Bow Pulpit	17
Deck 2 - View From Pulpit	17
Deck 3 - Hardtop	18
Deck 4 - Forward Bridge Seating	18
Deck 5 - Starboard Bridge Seating	18

Deck 6 - Helm Seats	18
Engine & Mechanical Equipment 1 - Engine Room	18
Deck 7 - Mezzanine	18
Engine & Mechanical Equipment 2 - Port Engine	19
Engine & Mechanical Equipment 3 - Starboard Engine	19
Engine & Mechanical Equipment 4	19
Engine & Mechanical Equipment 5	19
Engine & Mechanical Equipment 6	19
Engine & Mechanical Equipment 7	19
Engine & Mechanical Equipment 9 - Ice Chipper	20
Engine & Mechanical Equipment 8	20
Engine & Mechanical Equipment 10 - Lazarette	20
Engine & Mechanical Equipment 11 - Engine Display	20
Electrical System / Equipment - Generator	20
Cockpit / Fishing Equipment 1	20
Cockpit / Fishing Equipment 3	21
Cockpit / Fishing Equipment 2	21
Cockpit / Fishing Equipment 4 - Fighting Chair	21
Cockpit / Fishing Equipment 5 - Live Well	21
Cockpit / Fishing Equipment 6 - Teaser Reels	22
КОНТАКТЫ	23
Контактная информация	23
Телефоны	23
Время работы	23
Адрес	23

ХАРАКТЕРИСТИКИ

Обзор

This 50' Viking Convertible is a **"must see"**! She features a very pretty Kingston Gray Hull, low hours, excellent electronics and a gorgeous interior. She is meticulously maintained by her very discerning owner! Soon to be our trade!!! **CALL FOR DETAILS!!!**

Основная информация

Тип судна: Катер для спортивной рыбалки

Подкатегория: Convertible

Модельный год: 2012

Год постройки: 2012

Страна: United States

Верх: Hardtop

Кубрик: Да

Размеры

Длина общая: 50' 0" (15.24m)

Ширина: 17' 0" (5.18m)

Мин. осадка: 4' 10" (1.47m)

Скорость, вместимость и масса

Крейс. скорость: 32 Kts. (37 MPH)

Макс. скорость: 40 Kts. (46 MPH)

Водоизмещение: 66500 Pounds

Вместимость воды: 200 Gallons

Объем топливного бака: 1200 Gallons

Размещение

Всего кают: 3

Всего коек: 6

Спальные места: 6

Всего ком. состава: 2

Корпус и палуба

Материал корпуса: Fiberglass

Материал палубы: Fiberglass

Комплектация корпуса: Modified V-Hull

Цвет корпуса: Kingston Gray

Информация о двигателе

Двигатели: 2

Производитель: MAN

Модель: V-12

Тип двигателя: Inboard

Тип топлива: Diesel

ПОДРОБНОЕ ОПИСАНИЕ

NOTE:

THIS IS A PRELIMINARY LISTING! SPECIFICS OF THIS LISTING ARE SUBJECT TO CHANGE!

Accommodations

Sleeps six owners and guests in three Staterooms for a total of six berths. One Master Head with shower, one Guest Head with shower. Step into Salon from the starboard side of the Cockpit to find a gorgeous, tastefully decorated Salon with high gloss finish, Island Galley with bar stools, large L-shaped sofa with High / Low teak coffee table and a dinette forward. Step down the Companionway to the comfortable Master Stateroom to starboard with en-suite Head. Guest Staterooms to port and forward share the co-joined Guest Head.

Master Stateroom, Forward Starboard

- Head
- Closet
- Shower
- Credenza
- Carpeting
- Wallpaper
- Night stand
- SAT Receiver
- Stereo system
- Under bed drawer
- Under bed storage
- 22" Flat-screen TV
- Entertainment center
- Maple-lined hanging locker
- Air conditioning / heater with controls
- Queen berth w/ System #3 mattress upgrade

Guest Stateroom, Forward

- Head
- Shower
- Carpeting

- Hanging locker
- Under bed storage
- Stereo system w/ speakers
- Air conditioning / heater with controls
- Upper & lower berths w/ System #1 mattresses

Guest Stateroom, Forward Port

- Head
- Shower
- Carpeting
- Hanging locker
- Under bed drawer
- Stereo system w/ speakers
- Air conditioning / heater with controls
- Upper & lower berths w/ System #1 mattresses

Salon

- Blinds
- Settee
- Mirror
- Dinette
- Paneling
- Cabinets
- Cushions
- Carpeting
- SAT Receiver
- High / Low table
- 40" Flat-screen TV
- Entertainment center
- Teak & holly flooring
- Stereo system w/ speakers
- Air conditioning / heater with controls

Master Head

- Sink
- Shower
- Wallpaper
- Exhaust fan

- Amtico flooring
- Medicine cabinet
- Wallpaper boarders
- Vacu-flush, fresh water, overboard, recirculating, holding tank, electric head

Guest Head, Forward Port

- Sink
- Shower
- Wallpaper
- Exhaust fan
- Amtico flooring
- Medicine cabinet
- Vacu-flush, fresh water, overboard, recirculating, holding tank, electric head

Galley / Laundry, Main Deck, Amidship Starboard

- Sink
- Water heater
- Clothes dryer
- Clothes washer
- Garbage disposal
- Central vacuum system
- Three-burner, electric stove
- Pressure fresh water system
- Sub-Zero drawer-style freezers
- Sub-Zero drawer-style refrigerators
- Microwave oven / Convection oven

Helm / Electronics and Navigation

Impressive array of electronics!

- Sea temp
- Garmin AIS
- 4" Compass
- XM Weather
- Depth sounder
- Garmin fish finder
- Garmin 12kW radar
- Simrad AP24 auto pilot
- FLIR M324 night vision

- Simrad NSE8 GPS / Plotter
- Icom VHF radio (secondary)
- Icom 604 VHF radio (primary)
- Intellian i4 SAT TV w/ (2) receivers
- Furuno RD30 speed & distance logs
- Garmin 7212 & Command Mic (Cockpit)
- Airmar CHIRP transducer (keel-mounted)
- Pair of networked Garmin 7215's with Radar / GPS / Plotter / Fish finder

Deck

- EPIRB
- Locker
- Anchor davit
- Bridge curtain
- Spreader lights
- (6) Life jackets
- Navigation lights
- Bow pulpit w/ rails
- Anchor w/ 250' lines
- (2) Murray Brothers Helm seats
- Lewmar V2 stainless steel electric windlass
- Single, fixed, electric search light w/ remote control
- Fresh water, salt water, pressure Deck wash down system

Engine and Mechanical Equipment

- Trim tabs
- Fuel filters
- (2) Bilge blowers
- Fuel prime pumps
- Oil pressure alarm
- Oil transfer system
- Fire control system
- Fresh water cooling
- Engine synchronizers
- Bridge engine controls
- Engine fuel shut-off valve
- Hydraulic, wheel steering
- Engine temperature alarm
- Reverse cycle air conditioner
- Thermal, acoustical insulation

- Y-valve emergency bilge pump
- CO2, automatic fire extinguisher
- (3) Automatic, manual bilge pumps
- Twin 1360 hp. Diesel I/B 2012 MAN V-12's w/ 400 hrs.

Electrical System / Equipment

- (6) Batteries
- Dockside cables
- Automatic battery charger
- 12v, 24v DC electrical system
- 110v, 220v AC electrical system
- Onan 21.5kW generator w/ 450 hrs.

Cockpit / Fishing Equipment

- Fish box
- Bait freezer
- Center rigger
- Live fish well
- (6) Rod holders
- Rupp outriggers
- Eskimo ice chipper
- (4) Haunch-mount rod holders
- 6-rod Rocket launcher (aft Bridge rail)
- Murray Brothers fighting chair w/ rocket launcher
- (5) Ocean LED underwater lights & (4) Lumitec Seablaze underwater lights

Salesman's Comments

This 50' Viking Convertible is a "**must see**"! She features a very pretty Kingston Gray Hull, low hours, excellent electronics and a gorgeous interior. She is meticulously maintained by her very discerning owner! Soon to be our trade!!! **CALL FOR DETAILS!!!**

Исключения

При продаже яхты исключаются личные вещи владельца.

Отказ от ответственности

Компания предоставляет описание судна или яхты добросовестно, но не может гарантировать точность этой информации, а также не ручается за техническое состояние. Покупатель должен проинструктировать своих агентов или оценщиков исследовать представленную информацию более подробно, по собственному желанию. Продажа судна или яхты, изменение цены или снятие с продажи будет происходить без предварительного уведомления.

ФОТОГРАФИИ

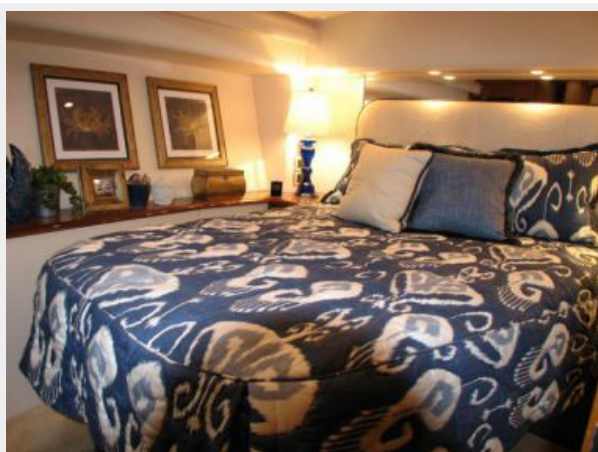
Profile 1



Master Stateroom 1



Master Stateroom 2



Master Stateroom 3



Guest Stateroom, Forward



Guest Stateroom, Forward Port



Salon 1 - Settee



Salon 2



Salon 3



Salon 4 - Dinette



Salon 5



Salon 6



Master Head



Guest Head



Galley 1



Galley 2



Helm / Electronics & Navigation 1



Helm / Electronics & Navigation 2



Helm / Electronics & Navigation 3



Helm / Electronics & Navigation 4



Helm / Electronics & Navigation 5 - Radio Box



Helm / Electronics & Navigation 6 - Radio Box



Helm / Electronics & Navigation 7 - Drop Down Box



Helm / Electronics & Navigation 8



Deck 1 - Bow Pulpit



Deck 2 - View From Pulpit



Deck 3 - Hardtop



Deck 4 - Forward Bridge Seating



Deck 5 - Starboard Bridge Seating



Deck 6 - Helm Seats



Deck 7 - Mezzanine



Engine & Mechanical Equipment 1 - Engine Room



Engine & Mechanical Equipment 2 - Port Engine



Engine & Mechanical Equipment 3 - Starboard Engine



Engine & Mechanical Equipment 4



Engine & Mechanical Equipment 5



Engine & Mechanical Equipment 6



Engine & Mechanical Equipment 7



Engine & Mechanical Equipment 8



Engine & Mechanical Equipment 9 - Ice Chipper



Engine & Mechanical Equipment 10 - Lazarette



Engine & Mechanical Equipment 11 - Engine Display



Electrical System / Equipment - Generator



Cockpit / Fishing Equipment 1



Cockpit / Fishing Equipment 2



Cockpit / Fishing Equipment 3



Cockpit / Fishing Equipment 4 - Fighting Chair



Cockpit / Fishing Equipment 5 - Live Well



Cockpit / Fishing Equipment 6 - Teaser Reels



КОНТАКТЫ

Андрей Шестаков (Andrey Shestakov) – ведущий яхтенный брокер отдела продаж яхт и судов компании Shestakov Yacht Sales Inc. Официальный представитель Shestakov Yacht Sales Inc. для русскоговорящих клиентов в центральном офисе компании в Майами/Форт Лодердейл/Флорида/США.

Контактная информация

Email: andrey@shestakovyachtsales.com

Web: shestakovyachtsales.com

Телефоны

Краснодарский край: **+7(918)465-66-44**

США, Майами, Флорида: **+1(954)274-4435**

Время работы

Понедельник – Суббота: **9:00 - 21:00**
EDT

Воскресенье: **Закрыто**

Адрес



Harbour Towne Marina, 850 NE 3rd St,
STE 213, Dania, FL 33004