

JUST J'S — DELTA



Builder: DELTA

Year Built: 2012

Model: Motor Yacht

Price: PRICE ON APPLICATION

Location: United States

LOA: 150' 11" (46.00m)

Beam: 30' 11" (9.42m)

Max Draft: 7' 11" (2.41m)

Cruise Speed: 16 Kts. (18 MPH)

Max Speed: 18 Kts. (21 MPH)

Our experienced yacht broker, Andrey Shestakov, will help you choose and buy a yacht that best suits your needs **JUST J'S — DELTA** from our catalogue. Presently, at Shestakov Yacht Sales Inc., we have a wide variety of yachts available on our sale's list. We also work in close contact with all the big yacht manufacturers from all over the world.

If you would like to buy a yacht **JUST J'S — DELTA** or would like help answering any questions concerning purchasing, selling or chartering a yacht, please call **+1(954)274-4435**

TABLE OF CONTENTS

TABLE OF CONTENTS	2
SPECIFICATIONS	3
Basic Information	3
Dimensions	3
Speed, Capacities and Weight	3
Accommodations	4
Hull and Deck Information	4
Engine Information	4
PHOTOS	5
CONTACTS	11
Contact details	11
Telephones	11
Office hours	11
Address	11

SPECIFICATIONS

Basic Information

Category: Motor Yacht

Model Year: 2012

Year Built: 2012

Country: United States

Registration #: IMO 9632519

Coast Guard #: Cayman Islands

Vessel Top: Hardtop

Dimensions

LOA: 150' 11" (46.00m)

LWL: 135' 11" (41.43m)

Beam: 30' 11" (9.42m)

Max Draft: 7' 11" (2.41m)

Clearance: 62' 5" (19.02m)

Speed, Capacities and Weight

Cruise Speed: 16 Kts. (18 MPH)

Cruise Speed RPM: 1550 Kts.

Max Speed: 18 Kts. (21 MPH)

Max Speed RPM: 1900 Kts.

Displacement: 507063.2026 Pounds

Gross Tonnage: 499 Pounds

Water Capacity: 1628 Gallons

Holding Tank: 1200 Gallons

Fuel Capacity: 15908 Gallons

Fuel Consumption: 120 Gallons

Accommodations

Total Cabins: 5

Total Berths: 5

Sleeps: 10

Total Heads: 7

Captain Cabin: True

Crew Cabin: 6

Crew Berths: 10

Crew Sleeps: 12

Crew Heads: 6

Hull and Deck Information

Hull Material: Composite

Deck Material: Teak

Hull Configuration: Semi-Displacement

Hull Color: light Blue

Hull Finish: Fiberglass

Hull Designer: Rodden Engineering

Exterior Designer: Jonathan Quinn Barnett Ltd.

Interior Designer: Jonathan Quinn Barnett Ltd.

Engine Information

Engines: 2

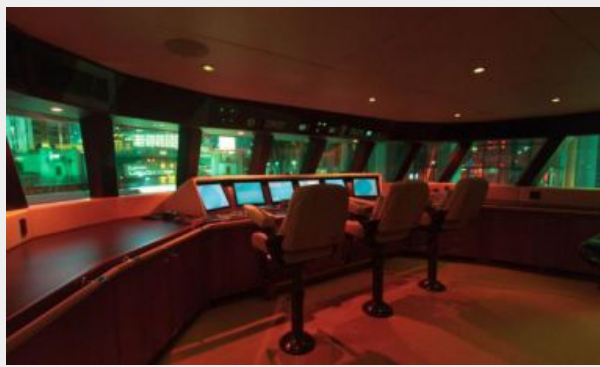
Manufacturer: Caterpillar

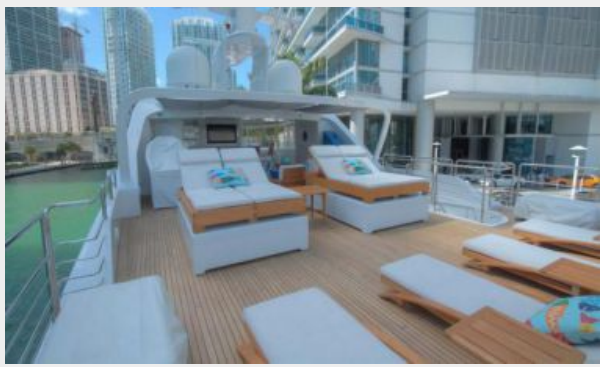
Model: 3512B

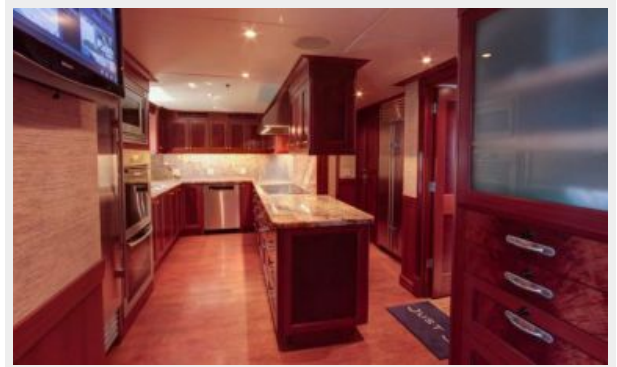
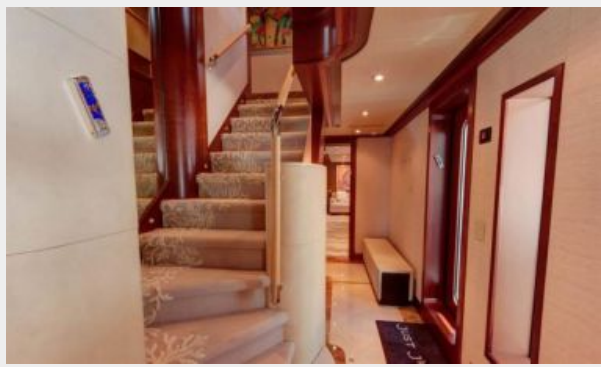
Engine Type: Inboard

Fuel Type: Diesel

PHOTOS













CONTACTS

Andrey Shestakov, leading yacht broker of the sales department of Shestakov Yacht Sales Inc. Shestakov Yacht Sales Inc., the official representative of the Miami/Fort Lauderdale FL headquarters.

Contact details

Email: andrey@shestakovyachtsales.com

Web: shestakovyachtsales.com/en/

Telephones

USA: +1(954)274-4435

Office hours

Monday – Saturday: **9:00 - 21:00** EDT

Sunday: **closed**

Address



Harbour Towne Marina, 850 NE 3rd St,
STE 213, Dania, FL 33004