

## RACHEL LEIGH — VIKING SPORT CRUISERS



**Builder:** VIKING SPORT CRUISERS

**LOA:** 50' 0" (15.24m)

**Year Built:** 1999

**Beam:** 16' 9" (5.11m)

**Model:** Motor Yacht

**Price:** PRICE ON APPLICATION

**Location:** United States

Our experienced yacht broker, Andrey Shestakov, will help you choose and buy a yacht that best suits your needs Rachel Leigh — VIKING SPORT CRUISERS from our catalogue. Presently, at Shestakov Yacht Sales Inc., we have a wide variety of yachts available on our sale's list. We also work in close contact with all the big yacht manufacturers from all over the world.

If you would like to buy a yacht Rachel Leigh — VIKING SPORT CRUISERS or would like help answering any questions concerning purchasing, selling or chartering a yacht, please call +1(954)274-4435

---

# TABLE OF CONTENTS

---

TABLE OF CONTENTS	2
SPECIFICATIONS	3
Basic Information	3
Dimensions	3
Speed, Capacities and Weight	3
Accommodations	3
Hull and Deck Information	3
Engine Information	3
DETAILED INFORMATION	4
Vessel Walkthrough	4
Exclusions	6
Disclaimer	6
PHOTOS	7
CONTACTS	11
Contact details	11
Telephones	11
Office hours	11
Address	11

---

# SPECIFICATIONS

---

## Basic Information

---

**Category:** Motor Yacht

**Model Year:** 1999

**Year Built:** 1999

**Country:** United States

**Fly Bridge:** Yes

## Dimensions

---

**LOA:** 50' 0" (15.24m)

**Beam:** 16' 9" (5.11m)

**Clearance:** 19' 3" (5.87m)

## Speed, Capacities and Weight

---

**Water Capacity:** 187 Gallons

**Holding Tank:** 67 Gallons

**Fuel Capacity:** 480 Gallons

## Accommodations

---

**Total Cabins:** 2

## Hull and Deck Information

---

**Hull Material:** Fiberglass

## Engine Information

---

**Manufacturer:** Caterpillar

**Model:** 3208

**Engine Type:** Inboard

**Fuel Type:** Diesel

---

# DETAILED INFORMATION

---

## Vessel Walkthrough

---

**Boat Name** Rachel Leigh **Dimensions** Beam: 16 ft 9 in Bridge Clearance: 19 ft 3 in **Engines**  
Engine 1: Engine Brand: Caterpillar Engine Model: 3208 Engine/Fuel Type: Diesel Engine  
Hours: 780 Engine Power: 435 HP Engine 2: Engine Brand: Caterpillar Engine Model: 3208  
Engine/Fuel Type: Diesel Engine Hours: 780 Engine Power: 435 HP **Tanks** Fresh Water Tanks:  
(187 Gallons) Fuel Tanks: (480 Gallons) Holding Tanks: (67 Gallons)

### Salon

- U-Shaped sofa with storage below
- High gloss teak coffee table
- Samsung flat screen TV
- Engel fridge
- U-line ice maker
- JVC CD Player
- Love seat to port
- Liquor cabinet
- Drawer and cabinet storage

### Galley

- Neff Four-burner stove top
- Stainless sink with damix faucet
- Kenmore convection/microwave oven
- Stand up fridge
- Water tank gauge
- Drawer and cabinet storage
- Corian counter tops
- Amtico sole

### Dinette

- L-Shaped seating with storage
- Hi-lo table
- Carpeting flooring
- Storage cabinets

### Master Stateroom

- Queen berth
- Toshiba flat screen TV
- (2) Cedar-lined hanging lockers

- Sony stereo
- Reading lights
- Make-up mirror
- Carpet flooring
- Drawer and cabinet storage
- SMX II A/C Control

### **Master Head**

- Molded sink with faucet
- Vacuflush head
- Stall shower
- Medicine cabinet
- Vanity with storage
- Towel hook

### **Guest Stateroom**

- Side by side bunks
- Cedar-lined hanging locker
- Toshiba flat screen TV
- Reading lights
- Drawer and cabinet storage
- Carpet flooring

### **Lower Helm**

- Northstar 961 XD
- Furuno GPS Navigator
- Autohelm speed
- Autohelm depth
- Autohelm ST6000 Autopilot
- Furuno radar 48 mile
- Sanshion HR-1012
- Bow thruster remote
- Motorola wireless one
- Trim tab controls

### **Main Helm**

- Auto helm report
- Bow thruster remote
- Micro commander single lever controls
- Bimini top

- Northstar 961 XD
- U-Shaped seating
- Table
- Helm seat
- Refrigerated drink box

### **Engine Room / Mechanical Equipment**

- Mather Micro Commander controls
- 15 KW Onan Generator
- NewMar PT-24-40 Battery Charger
- Twin disc MG-507-1 Transmissions
- (2) Cruisair A/C & Heat Systems
- (2) Starting batteries
- Battery for generator
- (4) House batteries

## **Exclusions**

---

Owner's personal belongings.

## **Disclaimer**

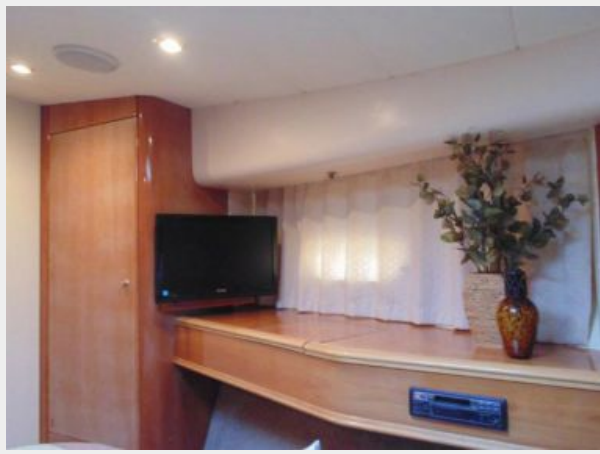
---

The Company offers the details of this vessel or yacht in good faith but cannot guarantee or warrant the accuracy of this information nor warrant the condition of the vessel. A buyer should instruct his representatives, agents, or his surveyors, to investigate such details as the buyer desires validated. This vessel or yacht is offered subject to prior sale, price change, or withdrawal without notice.

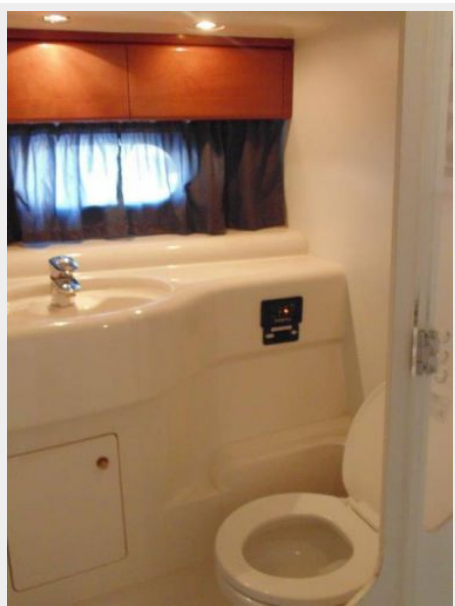
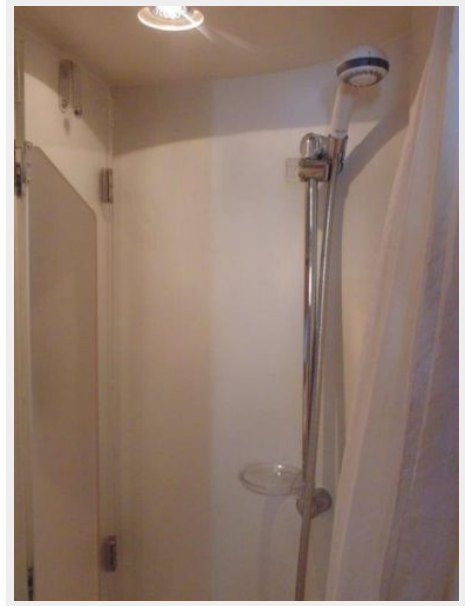
# PHOTOS

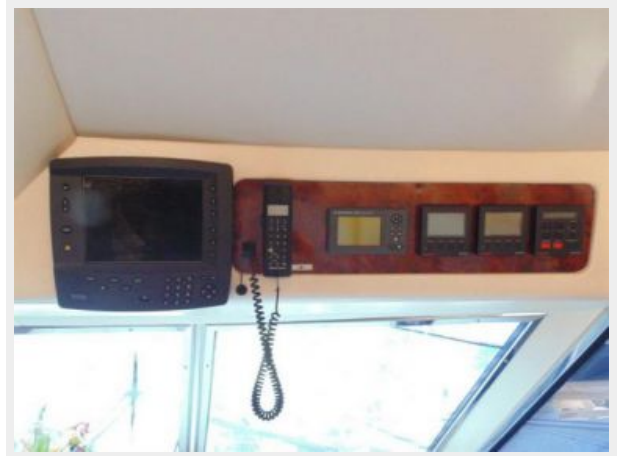












# CONTACTS

---

Andrey Shestakov, leading yacht broker of the sales department of Shestakov Yacht Sales Inc. Shestakov Yacht Sales Inc., the official representative of the Miami/Fort Lauderdale FL headquarters.

## Contact details

---

Email: [andrey@shestakovyachtsales.com](mailto:andrey@shestakovyachtsales.com)

Web: [shestakovyachtsales.com/en/](http://shestakovyachtsales.com/en/)

## Telephones

---

USA: +1(954)274-4435

## Office hours

---

Monday – Saturday: **9:00 - 21:00** EDT

Sunday: **closed**

## Address

---



Harbour Towne Marina, 850 NE 3rd St,  
STE 213, Dania, FL 33004