

LIONHEART — VIKING



Builder: VIKING

Year Built: 1996

Model: Motor Yacht

Price: PRICE ON APPLICATION

Location: United States

LOA: 60' 1" (18.31m)

Beam: 17' 5" (5.31m)

Min Draft: 4' 10" (1.47m)

Cruise Speed: 27 Kts. (31 MPH)

Max Speed: 31 Kts. (36 MPH)

Our experienced yacht broker, Andrey Shestakov, will help you choose and buy a yacht that best suits your needs **Lionheart — VIKING** from our catalogue. Presently, at Shestakov Yacht Sales Inc., we have a wide variety of yachts available on our sale's list. We also work in close contact with all the big yacht manufacturers from all over the world.

If you would like to buy a yacht **Lionheart — VIKING** or would like help answering any questions concerning purchasing, selling or chartering a yacht, please call **+1(954)274-4435**

TABLE OF CONTENTS

TABLE OF CONTENTS	2
SPECIFICATIONS	4
Overview	4
Basic Information	4
Dimensions	4
Speed, Capacities and Weight	5
Accommodations	5
Hull and Deck Information	5
Engine Information	5
DETAILED INFORMATION	6
Overview	6
Vessel Walkthrough	6
Decks & Equipment	6
Electrical	7
Flybridge Equipment	8
Salon	9
Galley, Dinette, and Companionway	10
Guest Staterooms & Heads	11
Master Stateroom & Head	12
Aft Deck	13
Engine Room & Mechanical Equipment	14
Points of Interest	15
Exclusions	18
Disclaimer	18
PHOTOS	19
CONTACTS	31
Contact details	31
Telephones	31

Office hours	31
Address	31

SPECIFICATIONS

Overview

“Lionheart” has received constant attention from her fastidious owner and presents herself as the superlative amongst premium cockpit motor yachts. Salesmanship and puffery would only cloud her beauty as “Lionheart’s” condition is best described with visual preview rather than a penman’s description. The broker will however attempt to describe her features and attributes that will set “Lionheart” apart from any other cockpit motor yacht of her size and style. Her attention received through care, maintenance, and updates may be corroborated through detailed records available upon inspection.

The Viking 60 Cockpit Sport Yacht blends performance with luxury and accommodation. Unprecedented versatility is accomplished through providing a cockpit for fishing, diving, and other water sports; an enormous fully enclosed and climate controlled aft deck and flybridge, the speed and performance of a Viking sportfish, and the generous accommodations one would expect from an aft-cabin motoryacht.

Lionheart is fully equipped, turn-key and ready for her next adventure. Her loving owner’s plans have changed providing an excellent opportunity to purchase one of the best all-around yachts at a price well below appraised value.

Basic Information

Category: Motor Yacht

Sub Category: Aft Cabin

Model Year: 1996

Year Built: 1996

Country: United States

Vessel Top: Hardtop

Fly Bridge: Yes

Cockpit: Yes

Dimensions

LOA: 60' 1" (18.31m)

Beam: 17' 5" (5.31m)

Min Draft: 4' 10" (1.47m)

Speed, Capacities and Weight

Cruise Speed: 27 Kts. (31 MPH)

Max Speed: 31 Kts. (36 MPH)

Displacement: 78000 Pounds

Accommodations

Total Cabins: 3

Total Heads: 3

Hull and Deck Information

Hull Material: Fiberglass

Hull Configuration: Modified V-Hull

Engine Information

Engines: 2

Manufacturer: MAN

Model: D2842LE406

Engine Type: Inboard

Fuel Type: Diesel

DETAILED INFORMATION

Overview

“Lionheart” has received constant attention from her fastidious owner and presents herself as the superlative amongst premium cockpit motor yachts. Salesmanship and puffery would only cloud her beauty as “Lionheart’s” condition is best described with visual preview rather than a penman’s description. The broker will however attempt to describe her features and attributes that will set “Lionheart” apart from any other cockpit motor yacht of her size and style. Her attention received through care, maintenance, and updates may be corroborated through detailed records available upon inspection.

The Viking 60 Cockpit Sport Yacht blends performance with luxury and accommodation. Unprecedented versatility is accomplished through providing a cockpit for fishing, diving, and other water sports; an enormous fully enclosed and climate controlled aft deck and flybridge, the speed and performance of a Viking sportfish, and the generous accommodations one would expect from an aft-cabin motoryacht.

Lionheart is fully equipped, turn-key and ready for her next adventure. Her loving owner’s plans have changed providing an excellent opportunity to purchase one of the best all-around yachts at a price well below appraised value.

Vessel Walkthrough

Entering the cockpit, one finds a great area for fishing, diving and swimming. Generous storage is provided through multiple cabinets and drawers to stow tackle and gear. Moving forward and up molded steps to aft deck, one finds a large, comfortable area perfect for entertaining or just relaxing. The aft deck is fully enclosed in thermo-tinted glass and is climate controlled for comfort in both warm and cool conditions. As with the aft-deck, the large flybridge is fully enclosed in tinted glass and is equipped with all the electronics necessary for safe and comfortable cruising. The salon is entered from the aft deck and includes generous accommodations for owners and guests. A large “L” shaped settee is situated to starboard with the dinette situated to port. Forward of the settee is the large galley with all appliances necessary to prepare gourmet meals. Moving forward of the salon and galley are the guest staterooms. The VIP stateroom is situated in the forepeak with a queen island berth and private access to the head. The third or guest stateroom includes over/under berths and a separate head. The washer and dryer are located in a utility locker within the companionway. Aft of the salon is the full beam master stateroom with a large berth along the centerline. Plentiful storage is available via hanging lockers and drawers. Access to the climate controlled engine room is provided through a full sized door in the companionway to the master stateroom.

Decks & Equipment

- Cockpit storage cabinet NEW SLIDES 2012
- Hot & cold cockpit shower
- Transom door Slides to side
- Non-skid fiberglass deck
- Sea Deck (white) with (teak) on swim platform and steps
- Wash down system
- Dockside water inlet (custom to add water from cockpit with timer)
- Cockpit and Salon landing lights
- Cable and TV inlets All rewired for shore power
- Hubbell connector, starboard and port
- Hubbell 50 amp 125/250V shore power connector, port Added Glenndening power with remote.
- Shore power cord on electric reel Starboard and Port
- Fiberglass bow pulpit with anchor roller Polished SS anchor.
- Aluminum bow rail
- 3 foredeck hatches
- G-55 Guardian Anchor with 300' chain with polished stainless steel swivel
- Divided anchor locker with extra chain and rode for 2nd anchor (provided)
- Simpson-Lawrence Sprint windlass with 2 deck switches
- 2 bow cleats
- Bow seat with cushions and rails
- Windshield washers and wipers replaced annually
- Teak caprail on aft deck landing with vinyl covers when not in use.
- Handrail above salon windows, port and starboard
- Aluminum rail with port and starboard boarding gate
- MarQuipt low profile 1500 lb. electric dinghy davit
- Coast Guard Safety Package
- 12 life jackets plus automatic vest jackets
- 20" life ring
- Fender traveler, port and starboard
- Fender racks
- Fender tracks
- Fenders with lines
- Navigation lights
- Docking lights
- Courtesy lights, port and starboard
- Electric/air horn

Electrical

- 220V AC electrical system
- 12V & 24V DC electrical system
- Battery parallel switch

- Glendinning Cablemaster shore power cord retrieval system
- 20kW Onan generator model 20MDKAE; 3305 hours
- New heat exchanger 2012 & inlet screen
- Vernalift generator muffler
- New Inverter Outback 2012 recently replaced 4 batteries (2013)
- Sentry G160A-3NL 12V battery charger
- Sentry 24V 25 amp battery charger
- 4 x 12V storage batteries for engine
- Engine room batteries: 4 x 12V starboard in covered boxes; 4 aft and 2 port, in engine room; 4 x 12V under cockpit (2013)
- 4 battery cut-off switches
- 12V, 110V shore power lighting
- 110V AC receptacle under helm
- Remote genset gauges on bridge plus Flow Scan calibrated 2011
- Circuit breakers to charging circuits, bilge pump, ship service, electronics, windlass
- 2 Chalres Industries Smart Boost transformers for shore power systems (port & starboard) Reconditioned 2012
- 2 shore power isolation transformers
- Engine control/instrument panel, port and starboard, each with engine oil temp, engine oil pressure, drive oil pressure, engine coolant temp, volts, fuel filter restriction, engine hours, start, stop and fuel prime
- Can be monitored with engine room camera from flybridge on Raymarine E120

Flybridge Equipment

- Robertson AP3000X autopilot (Control head 2011)
- Raymarine ST60 depthfinder (March 2008)
- Raymarine radar 48 mile
- ICOM IC-M58 VHF radio
- Ritchie Powerdamp compass
- Auto NAV marinized computer C-3000
- Big Bay LCD monitor (March 2008)
- (2) Raymarine E120 GPS/plotter/radar display (March 2008)
- Mathers MicroCommander electronic controls
- Bow thruster
- Stern thruster (2013)
- Trim tabs controls
- Clarion stereo system with Clarion speakers and sub-woofer (March 2008)
- XM/Sirius Satellite Stereo and Weather
- EPIRB
- Hailer/fog horn
- Rudder position indicator
- Remote genset gauge system above helm seat.

- Engine instruments and gauges; tachometers, oil pressure, water temp, drive oil pressure, volts
- Indicator lights
- CD rom nav charts with most recent upgrade
- Flowscan 906X fuel monitor (Calibrated)
- 3 fuel tank gauges
- Fuel transfer switch
- Bilge pump cycle counters
- Antennas: 2 VHF, 4 GPS, radar, TV and KVH TracVision satellite TV
- CCTV camera (total of 7) with WiFi card can be monitored over internet.
- Olin Alert/Locate marine signal kit
- Emergency engine shutdown
- Halon system override
- Hardtop
- Full hard-enclosed flybridge with air conditioning
- Cruisair SMX air conditioning control
- Custom tinted windows (thermo tint 2012)
- Windows slide open for open air cruising.
- Helm chair (Upgraded Captains chair 2011)
- Companion chairs, port and starboard
- L-shaped bench seats, port (with storage) and starboard
- Stainless steel steering wheel
- Overhead lights
- Flex Argonaut LCD monitor (March 2008)
- ICOM IC-M604 VHF radio (March 2008)

Salon

- Satellite TV
- ALL NEW TV'S 2013
- Salon and Galley on same level
- Large L-shaped Ultra leather sofa with storage underneath and accent pillows
- Carpeting (March 2008) and runners
- Custom interior with raised panel woodwork
- Mirrored panel aft
- Custom coffee table with wine and glass storage
- End table with 2 drawers and lamp
- Fabric blinds
- Custom fabric panels, port and starboard
- Entertainment center with DVD, Satellite TV, Dolby digital 5.1 receiver, VCR, Bose speakers
- Raymarine CCTV camera (March 2008)
- Boston Acoustics subwoofer (March 2008)

- 5 Bose stereo speakers (March 2008)
- Overhead stereo speakers
- Sony STR-DG710 receiver
- ICOM IC-M58 VHF radio
- Courtesy light in step to aft deck
- Generator remote start
- Cabinetry forward of dinette with Sharp 37" LCD TV (March 2008) and shelves

Galley, Dinette, and Companionway

DINETTE:

- Opposite Galley, starboard
- L-shaped seating with storage
- Teak table

COMPANIONWAY:

- Carpeted sole and steps
- 3 overhead lights
- Cruisair SMX A/C controls (2013 with one spare)
- Bosch heavy duty washer and dryer
- Central vacuum cleaner inlet
- Storage in steps

UNDER COMPANIONWAY SOLE:

- 2 head vacuum pumps and tanks
- 2 head discharge Y-valves
- Holding tank macerator discharge
- 2 electric/automatic bilge pumps with additional diaphragm pump.
- 2 shower sump pumps
- All sanitary system hoses replaced 2013—installed Big Orange vent filters,
- Corian countertops
- GE dishwasher (March 2008)
- KitchenAid full size side-by-side refrigerator/freezer with in-door ice and water dispenser (March 2008)
- Princess 2 burner electric stovetop with recessed Ceran burners into counter with cover
- Exhaust fan
- Sharp Carousel microwave/convection oven
- Kenmore trash compactor
- Electric water heater
- Garbage disposal icemaker
- Storage cabinets

- Molded sinks
- Instant hot water
- Tiled sole
- Water tank gauge
- Heart Interface Inverter panel
- Circuit breaker panel

Guest Staterooms & Heads

VIP Stateroom

- Walk around queen size berth with 4 drawers
- Rope lighting around base of berth
- Carpeting (March 2008)
- Overhead lights
- Valance lighting
- Mirrored panels, forward
- Forepeak access
- Built-in cabinetry, port and starboard
- Sharp LCD TV (March 2008)
- Pioneer DVHP50000MP tuner and DVD player (March 2008)
- Cruisair SMX AC controls
- Overhead hatch with screen
- Cedar lined hanging locker to port
- Fire extinguisher
- Bow thruster tunnel and motor under sole
- Smoke/carbon monoxide detector
- En-suite Vacu-Flush head
- Vinyl sole
- Molded countertop and sink
- Overhead hatch with screen
- Medicine cabinet with mirrored doors
- Storage under sink
- Separate stall shower with folding door, overhead light, wall mounted shower head on hose
- Linen and storage cabinets

Starboard Guest Stateroom

- Upper and lower single berths, storage beneath lower berth
- Bedspreads, shams and toss pillows
- Reading lights
- Overhead lights
- 2 stereo speakers
- Sylvania TV/DVD combo (March 2008)

- Cruisair SMX A/C controls
- Cedar lined hanging locker with light
- Smoke/carbon monoxide alarm
- Carpeting (March 2008)
- En-suite access to head; access also from companionway
- Vinyl sole
- Vacu-flush head
- Molded countertop and sink; storage underneath
- Overhead hatch and screen
- Medicine cabinet with mirrored doors
- Storage under sink
- Full shower stall with folding door, overhead light, wall-mounted showerhead on hose
- Blower
- Switch for macerator

Master Stateroom & Head

- Full beam master suite
- Walk around King-size island berth with rope lighting
- Head board
- Soft goods: bedspread, pillows, accent pillows, all new March 2008
- 2 large cedar lined hanging lockers, port and starboard walk in
- Carpeting (March 2008)
- Cruisair SMX AC controls
- Entertainment center with TV and stereo CD player
- Overhead Escape hatch to aft deck
- L-shaped teak built-in dressers with drawers and cabinets, port and starboard
- 2 lamps
- Portholes, port and starboard
- Pleated drop shades
- Valances with indirect lighting
- Vanity stool
- 2 overhead stereo speakers
- Sony LCD TV 26" (new March 2008)
- JVC HR-XV5440 VCR/DVD player
- Sony RDR-HX715 DVD recorder (new March 2008)
- 2 Kidde fire extinguishers
- Halon fire control cylinder
- Hydraulic steering actuator
- Autopilot feedback sensor
- 2 fuel transfer pumps
- Fiberglass 430 gallon fuel tank
- 5 overhead lights

- Mirrored paneling aft all lights converted to LED
- Central vacuum cleaner inlet
- Central vacuum cleaner
- High water alarm
- Head vacuum tank
- Holding tank discharge pump
- Electric/automatic bilge pump
- En suite Vacu-Flush head
- Vanity with molded in sink
- Tiled sole with area rug
- Mirrored paneling port, overhead and on locker doors
- 3 vanity lights
- 2 cabinets
- Separate stall shower with folding door, overhead light and wall mounted showerhead on hose
- Blower
- Linen and storage cabinets
- Holding tank warning light
- Holding tank discharge pump switch in vanity cabinet

Aft Deck

- Completely air conditioned, Cruisair SMX controls
- Hard enclosure
- Tinted sliding windows (port and starboard)
- Tinted sliding door aft
- Tinted wing doors to forward deck, double doors to Salon
- Toshiba LCD TV
- DirecTV HDTV DVR receiver
- Stereo speakers, port and starboard
- Wet bar with sink and storage
- U-Line refrigerator with icemaker
- Padded headliner with recessed lighting
- Carpeting (March 2008) over fiberglass deck
- Vinyl wall covering
- Valances with lights
- Courtesy light step to bridge
- L-shaped sofa with storage
- 2 chairs
- Table and lamp
- 3 steps up to bridge with port and starboard grab rail
- Raymarine CCTV (March 2008) in line handling deck area

Engine Room & Mechanical Equipment

- Twin 1200 hp 12 cylinder MAN D2842LE406 diesel engines; Engine hours 2050 port (1/2015) starboard 2068 (1/2015)
- Replaced all injectors 2012
- Rebuilt turbos 2014
- Rebuilt exhaust risers 2013
- New cross-over shaft seal coolers 2012
- New solenoid and fuel pump recalibrated by Bosch 2012.
- Glendinning engine synchronizers
- Transmission ZF model BW165P3 2:1 ratio
- Engine room gauge package
- FloScan 960X fuel monitoring system
- Bennett trim tabs
- Cruisair reverse water circulating pumps
- Electric bow thruster
- Cockpit and bridge controls
- MMC electronic engine controls with remote control in cockpit with 50' cord
- Halon fire control system (3 areas)
- Additional portable fire extinguishers thru-out
- Fresh water cooling system
- Oil transfer system
- Raw water sea strainers
- Engine temperature alarm
- Racor fuel filters on mains and generator
- Electric fuel prime pump
- 2 bilge blowers

LAZARETTE:

- 395 gallon fiberglass fuel tank
- Sea Fire 6 lb. Halon cylinder
- Trim tab reservoir and motor
- 4 x 12V batteries
- Battery cut-off switch
- Heart Interface inverter
- Electric/automatic bilge pump

ENGINE ROOM:

- Storage locker aft
- Fiberglass holding tank
- Head vacuum pump
- Head discharge Y-valve
- Shower sump pump

- 4 manual, automatic bilge pumps
- 2 sump pumps
- Overboard, electric heads
- Hydraulic power assist wheel steering
- Dripless shaft/rudder seas
- Dripless shaft packing, port and starboard
- New 2013 with crossover water cooling
- 2 3/4" stainless steel propeller shafts
- 4 blade Nibral 31" x 46" propellers
- Diverter valve off engine raw water intake seacock for emergency bilge pumping, port and starboard
- Air conditioned engine room
- Awlgrip paint in engine room
- Overhead fluorescent lights
- 3 DC lights
- Air conditioned engine room
- Awlgrip paint in engine room
- Overhead fluorescent lights
- 3 DC lights
- Blowers, port and starboard
- Raritan 19 gallon water heater
- 2 x 12V fresh water pressure pumps
- 2 Raymarine CCTV cameras

Points of Interest

- 2008 Interior window treatments, carpet, bed spreads, new custom MSR BR mattress.
- 2008 Exterior and Engine Room painted with Awlgrip
- 2009 Replaced windshield wiper motors
- 2011 Bosch calibrated fuel pumps
- 2011 Replaced injectors on both engines
- 2012 New Outback Inverter
- 2012 Genset New heat exchanger and water pump
- 2012 Reconditioned Charles Boost boxes
- 2012 Calibrated Flo Scans
- 2012 Fuel tanks treated and fuel polished
- 2012 New Air Seps
- 2011 Replaced starter solenoids'
- 2012 Bottom completely stripped of old paint. Applied barrier coat
- 2012 Replaced Shaft bearings & installed new improved shaft seals and crossovers
- 2012 Propellers Calibrated and Nickel Plated
- 2012 Engine risers rebuilt
- 2013 Cleaned heat exchangers and waste gates

- 2013 Replaced blow by valves
- 2014 Re caulked entire boat
- 2014 Replaced engine room fans and blowers
- 2014 Replaced engine preheaters
- 2014 8 new batteries
- 2014 Turbo chargers rebuilt
- 2014 New engine coolant

COCKPIT AREA

- Drawer slides were replaced
- Starboard shelf added under hatch on floor
- New Outback inverter with 4 new batteries replaced 2014
- Dock side outlet to fill water tank (connected to timer located in Galley)
- Additional gauge located on port side of refrigerator.
- Port side replaced manual exposed power cord with automatic retrieval
- Teak cap rail with covers on rail leading to upper salon
- Starboard side of cockpit cabinets is a remote docking cord.
- Sundeck SEADECK teak padding on swim platform and steps—white on cockpit floor
- Docking lights port and starboard
- New swim platform ladder
- Underwater lights
- Stern Thruster

UPPER SALON

- All glass temperature reflective tinting
- Storage under “L” shaped sofa (Aft & Port)—All spare parts and records stay with buyer
- Refrigerator/Ice Maker
- Sliding entrance door off cockpit entrance
- Sliding windows for open air as needed
- Updated wing doors with locks
- Coffee table (storage below) with marble top
- A/C with new digital controller
- LED lighting

FLYBRIDGE

- All glass temperature reflective tinting
- Life Jackets under seats along with other items of which most will remain with sale
- Captain Chair added
- Air Conditioned
- Above Captain’s helm—Remote search light—Flo Scan fuel monitoring system—Remote Genset start/stop plus oil pressure, temp, and charge dials.

COMPUTER/SECURITY/FLYBRIDGE

- Compaq Presario PC. E2180. 250GB w/DVD
- Woofer/. Harmon/ Patron & 2 speakers
- Digital video recorder LS-8008H
- Argonaut Monitor /"T flex" 15"
- Wireless keyboard 1000
- Wireless mouse 2000 (Microsoft)
- 7 camera's. 1 open

Lower Salon

- Computer-E machine
- APC power PAC
- Microsoft wireless keyboard & mouse

Navigation

- (2) Ray Marine E 120's. 4 video inputs each. CE 0191
- (1) Updated Ray Marine Nav chip for E120's 2012
- (1) Rose Point with tracking antenna (Video to screen)
- (1) Big Bay 17" monitor. 4 inputs
- (1) Ray Marine graphic auto helm series
- (1) Robertson/Simrad AP 22/J300X Sn 2904B02
- (1) Simrad 3000X remote autopilot w/wire
- (1) Sirius CMD4A Clarion w/weather receiver w/ remote
- (1) iCOM IC-M604 VHF(dash)
- (1) iCOM HM-162B Sn 0101915(remote @ helm)
- (1) iCOM M-58(lower salon)
- (2) iCOM M-36's (portable)
- (1) Auto Anchor AA710
- (1) Garmin GPS map 640n

TV's

- Reception
- Satellite Direct TV
- Dock Cable thru Coax input Starboard cockpit by steps
- Local thru the Antenna signal amplifier
- Master BR
- Main Salon LG 42" Smart TV with HDMI Dolby surround pro-logic 1 bit technology
- Guess Berth13" Sylvania/ JVC DVD Tuner
- VIP Berth Sharp 20" AQUOS w/Pioneer DVD & Tuner
- Aft Deck LG 42" Smart TV

APPLIANCES

- 2008 Refrigerator (side by side with ice maker)

- Washer and Dryer
- Garbage Disposal (Replaced 2012)
- Micro Oven
- Electric Oven

BOW

- Polished SS Anchor
- Windlass rewired
- 1500 lb Davit
- Fresh water wash down
- Bench Seat
- Front infrared camera (allows night vision over monitor in flybridge)

PLUMBING

- All sanitary piping replaced in 2014
- Big Orange vent filters
- Heads serviced and resealed
- Factory rebuilt Bilge Busters
- Rebuilt fresh water tank top
- Recent water pumps (2)
- Master BR sending unit for tank level replaced
- Macerators replaced
- Shower sumps replaced

Exclusions

Owner's personal belongings.

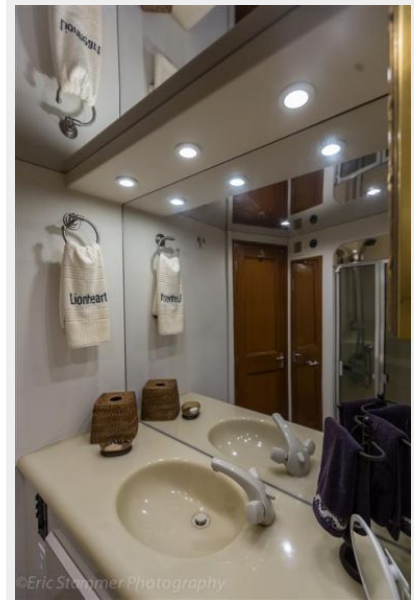
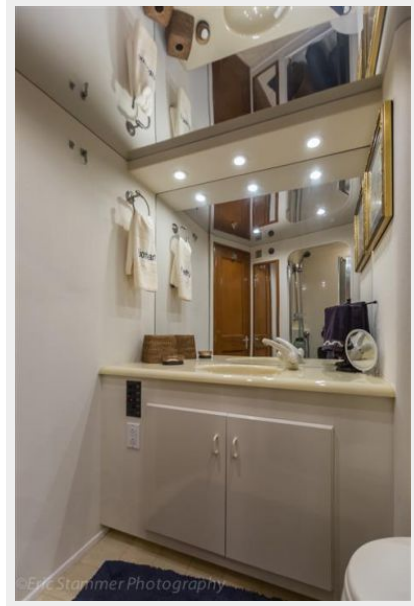
Disclaimer

The Company offers the details of this vessel or yacht in good faith but cannot guarantee or warrant the accuracy of this information nor warrant the condition of the vessel. A buyer should instruct his representatives, agents, or his surveyors, to investigate such details as the buyer desires validated. This vessel or yacht is offered subject to prior sale, price change, or withdrawal without notice.

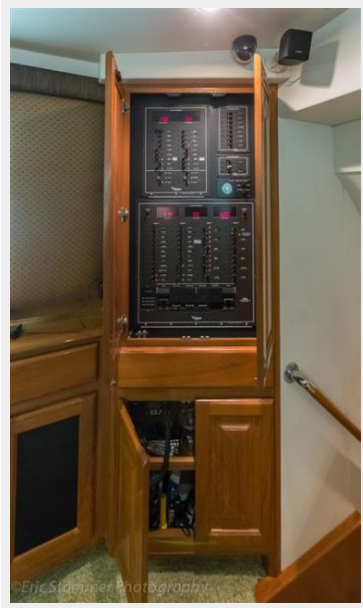
PHOTOS

























CONTACTS

Andrey Shestakov, leading yacht broker of the sales department of Shestakov Yacht Sales Inc. Shestakov Yacht Sales Inc., the official representative of the Miami/Fort Lauderdale FL headquarters.

Contact details

Email: andrey@shestakovyachtsales.com

Web: shestakovyachtsales.com/en/

Telephones

USA: +1(954)274-4435

Office hours

Monday – Saturday: **9:00 - 21:00** EDT

Sunday: **closed**

Address



Harbour Towne Marina, 850 NE 3rd St,
STE 213, Dania, FL 33004