

WIN WON — HORIZON



Судостроитель: HORIZON

Год постройки: 2005

Модель: Моторная яхта

Цена: **ЦЕНА ЯХТЫ ПО ЗАПРОСУ**

Местонахождение: United States

Длина общая: 73' 0" (22.25m)

Ширина: 18' 10" (5.74m)

Макс. осадка: 6' 1" (1.85m)

Крейс. скорость: 21 Kts. (24 MPH)

Макс. скорость: 24 Kts. (28 MPH)

Купить **WIN WON — HORIZON** а также выбрать подходящую вам яхту из нашего каталога яхт вам поможет опытный яхтенный брокер Андрей Шестаков. На сегодняшний день компания **Shestakov Yacht Sales Inc.** имеет большое количество яхт в собственном списке продаж, а также тесно сотрудничает со всеми крупными яхтенными производителями по всему миру.

Для того чтобы купить яхту **WIN WON — HORIZON** а также проконсультироваться по любому вопросу связанному с покупкой, продажей, чартером яхт позвоните по телефону **+7(918)465-66-44**.

ОГЛАВЛЕНИЕ

ОГЛАВЛЕНИЕ	2
ХАРАКТЕРИСТИКИ	5
Основная информация	5
Размеры	5
Скорость, вместимость и масса	5
Размещение	5
Корпус и палуба	5
Информация о двигателе	6
ПОДРОБНОЕ ОПИСАНИЕ	7
Vessel Walkthrough	7
Construction	7
Salon	7
Galley	7
Dinette	8
Day Head	8
Companionway	8
Master Stateroom	8
Master Head	9
Forward Stateroom	9
Forward Head	9
Starboard Guest Stateroom	9
Aft Cabin	10
Aft Head	10
Aft Companionway	10
Flybridge Equipment	10
Electronics & Navigational Equipment	11
Aft Deck Equipment	11
Electrical System	12

Fore Deck	12
Engine Room & Mechanical Equipment	13
Remarks	14
Исключения	14
Отказ от ответственности	14
ФОТОГРАФИИ	15
Salon	15
Salon	15
Salon	15
Salon	15
Salon	15
Galley	15
Galley	16
Dinette	16
Laundry	16
Day Head	16
Master Stateroom	16
Master Stateroom	16
Master Head	17
Master Stateroom	17
Master Head	17
Forward Stateroom	17
Guest Stateroom	18
Guest Head	18
Crew Stateroom	18
Crew Head	18
Flybridge	19
Flybridge	19
Aft Deck	19

Aft Deck	19
Engine Room	19
Engine Room	19
Passageway	20
WIN WON	20
Stern Profile	20
Bow Profile	20
Swim Platform	21
КОНТАКТЫ	22
Контактная информация	22
Телефоны	22
Время работы	22
Адрес	22

ХАРАКТЕРИСТИКИ

Основная информация

Тип судна: Моторная яхта

Модельный год: 2006

Год постройки: 2005

Страна: United States

Размеры

Длина общая: 73' 0" (22.25m)

Ширина: 18' 10" (5.74m)

Макс. осадка: 6' 1" (1.85m)

Скорость, вместимость и масса

Крейс. скорость: 21 Kts. (24 MPH)

Макс. скорость: 24 Kts. (28 MPH)

Водоизмещение: 99200 Pounds

Вместимость воды: 400 Gallons

Вместимость сточного бака: 150 Gallons Объем топливного бака: 1950 Gallons

Размещение

Всего кают: 3

Корпус и палуба

Материал корпуса: Fiberglass

Информация о двигателе

Двигатели: 2

Производитель: Caterpillar

Модель: C-30

Тип двигателя: Inboard

Тип топлива: Diesel

ПОДРОБНОЕ ОПИСАНИЕ

Vessel Walkthrough

This 73' Horizon may be the perfect blend of style, function and dependability. Stepping onto the oversized swim platform from either port or starboard, one walks up four curved Teak steps. The aft deck is entered via hinged stainless steel gates. The spacious aft deck offers a Teak inlay table, bench seating and loose teak chairs. The Salon is forward with a wrap-around settee to starboard and the yacht's entertainment center to port. Forward and up are steps to the yacht's open galley, day head and wheelhouse area with curved settee. The accommodations are forward and below with a VIP cabin forward sharing a head with the twin berth guest cabin. Next aft is the full beam master with walk-in closet and oversized bed. From the rear of the salon, one can enter the aft cabin and engine room area. The aft cabin can be utilized for crew or guests. There is a fold down berth in the utility area. The flybridge is accessed by either interior steps or aft deck steps. The flybridge has a centerline helm, curved settee with table, wet bar, refrigerator, grill and an area for a tender.

Construction

This 73' was built using Horizon's licensed SCRIMP process on the hull, deck and superstructure for high strength and less weight. High density coring is used above the waterline as well as in the stringers. Styling is current and modern with walk-around side decks and a very pleasing profile.

Salon

Stepping inside from the aft deck, through the Trend sliding stainless steel door with full drapes, is a cabinet to starboard with a hidden U-line refrigerator with icemaker below and custom locker above with assorted stemware fitted in Lucite shelves behind an etched glass door with interior lighting. Next forward is a huge U-shaped, off white leather sofa with loose pillows that seats six to eight people. In front of the sofa is a cherry and smoked glass coffee table with two small stools that match the sofa below the table top. To the portside is a two person love seat in matching off white leather. Flanking the love seat are cabinets with a Marantz CD Changer, Samsung BluRay/DVD, and KVH Tracvision control panel, the salon's Direct TV receiver and one of the yachts' DC electrical panels. The overhead has a custom ceiling inlay with a lighted, mirrored tray ceiling and wood trim. Also in the salon are five 6" stereo speakers, subwoofer and burl wood columns that accent the high gloss cherry joinery.

Galley

One step up and just forward of the salon is the open galley. The sole is Teak and Holly. The

countertops are granite. The galley is U-shaped off the starboard side of the yacht. There is a U-shaped dinette forward, with a country kitchen arrangement. ICOM VHF radio in galley. Forward of the galley but open to the area is a small cherry table and C-shaped settee to seat four.

- Double stainless steel sink
- GE Full sized dishwasher
- GE Profile 4-burner Ceran top glass cook top
- GE Built-in under counter oven
- GE Profile microwave/convection oven with exhaust fan and work light
- SubZero refrigerator with two freezer drawers with cherry paneling
- (4) Overhead lights
- Overhead stereo speakers
- Assorted cherry front doors and cabinets
- 21" Samsung flat screen TV, New 2014

Dinette

Forward of the galley but open to the area is a small cherry table and C-shaped settee to seat four.

Day Head

Opposite the galley, nestled under the stairs to the flybridge, is the day head with a granite tile sole, granite vanity with porcelain sink, Royal Flush Head Hunter toilet, exhaust fan and a mirrored medicine cabinet.

Companionway

Forward and down from the port side of the U-shaped dinette are five curved steps to a landing that goes forward to a VIP and Guest Cabin. Two more steps lead aft to the centerline Master Suite. Also in this area are step lights, handrails, GE stacked washer dryer and bilge access hatches. In the bilge of this area is a 20 gallon hot water heater, a holding tank, macerator discharge pump, and automatic bilge pump and a high water alarm.

Master Stateroom

Located centerline of the yacht, this cabin offers maximized beam, a quiet and stable ride and the highest level of fit and finish. Entering from the forward end, there is a king size berth on centerline with rope lighting and abundant storage below. The large upholstered headboard sits upon a five panel mirrored bulkhead with two sconce lights. Above the berth is a raised tray type ceiling with rope lighting, high gloss trim and smoked mirrors. To starboard starting aft is a walk in locker with a safe, cabinet with AM/FM/DVD system and a satellite receiver. Next forward is a

two person settee with storage below. Furthest forward is a vanity and additional storage lockers above. Also in this stateroom is a Samsung 21" Flat screen TV. To port is additional cabinetry and several drawers. The portholes in the master are custom enlarged vertical ovals with stainless steel weather covers. Also in the master stateroom are several overhead halogen mini spots, two overhead stereo speakers, smoke detector, digital Marine Air AC controls and accent rope lighting.

Master Head

The master head is entered from the aft starboard corner of the master stateroom. The sole is marble slab with a contrasting border and brass inlay. The twin bow front vanity has storage below, two under mount china sinks and a marble countertop. There are ample mirrors and medicine cabinet storage. The Head Hunter Royal Flush toilet is centerline in its own enclosed room with a stall shower to port. The shower fixture is hand held or wall mountable, the shower has a clear glass shower door and a marble tile sole. Also in the head are three overhead halogen mini spots, exhaust blower, oval stainless steel porthole with weather cover and additional storage.

Forward Stateroom

Starting forward is the VIP Cabin with a centerline queen size berth with rope and storage below. The upholstered headboard is slightly inset with four mirrored panels and two sconce lights above. Twin built in nightstands are port and starboard. Outboard are three cabinets overhead, each side. Below are twin oval portholes with stainless steel weather covers and two more cabinets below. Aft to starboard is an auto lit hanging locker. To port is access to the forward head. Additional features to this stateroom include six overhead halogen mini spots, two stereo speakers, overhead smoke detector, hatch to bow seat on Foredeck, AM/FM/CD player, digital AC control panel, and a Samsung 21" Flat screen TV, new in 2014. Below the sole of this cabin is the bow thruster, its hydraulic pump, a hydraulic windlass pump and a ten gallon hot water heater.

Forward Head

The spacious forward head serves both the forward VIP and the starboard side guest cabin. There are two entrances, one from the VIP and the other from the companionway. The sole is a marble slab with contrasting border. The bow front vanity has storage below, an under mount china sink below a marble countertop. A medicine cabinet and oval porthole with a weather cover is above. There is a Hunter Royal Flush Head and the stall shower has two clear glass doors, light and exhaust blower. Also in the head are three overhead halogen lights.

Starboard Guest Stateroom

Across the companionway is the guest cabin with twin lower berths with storage and rope lighting below. One large upholstered headboard stretches between the berths and over the centerline nightstand with two storage drawers. At the foot of the outboard berth is a full size hanging locker with auto light. Also in this cabin is a Samsung 21' Flat screen TV, AM/FM/CD player, two stereo speakers, two reading lights, smoke detector, Marine Air digital AC panel and two stainless steel portholes with weather covers over the outboard berth.

Aft Cabin

Located in the area behind the engine room but finished just as nice as the rest of the yacht is the aft cabin. Some owners might use this for crew, others as an additional guest cabin. Two berths are located athwartships with a nightstand with two drawers between and hanging locker above. Also in this area are three overhead halogen mini spots, two stereo speakers, two portholes with stainless steel weather covers, Samsung 21" Flat screen TV, digital AC controls and two reading lights.

Aft Head

Like the yacht's other head, the sole is marble. The bow front vanity has a china under mount sink on a marble counter top. The toilet is a Headhunter Royal Flush model. Also in the head is a stainless steel porthole with weather cover, exhaust blower, three overhead halogen mini spots, a medicine cabinet and additional storage in the vanity.

Aft Companionway

The aft cabins of this Horizon are accessed via eight curved, lighted steps from the aft port corner of the salon. The main ship's electrical panel is in the curved stair companionway. At the bottom of the stairs is the engine room access with dogable door. To starboard is the dedicated equipment room. Going aft is a GE Spacemaker laundry center, a Sub Zero compact freezer, a U Line refrigerator, a GE microwave oven, sink and vanity and a unique fold down Pullman both for a part time crew member as needed. Access to the swim platform is up three steps through a watertight door. The Rudder compartment is below.

Flybridge Equipment

- Aft bench seat with removable cushions, cover & storage below
- Port & starboard stern gate to swim platform
- Extended integral cantilever swim platform with teak sole
- (3) Oversize stainless steel hoop rails
- Hot & cold shower in cabinet
- (4) Molded steps to aft deck with teak treads both port & starboard

- Stainless steel handrails port & starboard at steps
- (5) Port & (5) starboard courtesy lights at steps
- (2) Speco 40 watt hailer horns
- Bennet trim tab controls with trim level indicators
- EZ2CY enclosure three sides, aft side is clear vinyl, New 2014
- Vinyl overhead with (3) overhead lights
- (2) Overhead stereo speakers
- Teak helm wheel
- Closed circuit TV monitor with Elbex automatic sequential switcher panel
- (2) Caterpillar LCD digital engine monitor displays, New 2014
- TRAC stabilizer controls
- Mastervolt inverter control switch
- Tank tender fuel level indicators
- Bennett trim tab controls and indicator panel
- Water tank level gauge
- Scroll, low RPM & synchronizer switches
- (3) Wiper control switches with crasher
- Vessel schematic with indicator lights for pumps & nav lights
- U-line refrigerator
- Stidd helm chair

Electronics & Navigational Equipment

- Panasonic Hybrid plane
- Garmin GPS Map 8215 with Sirius and SeaTemp, New 2014
- Garmin 8215 Color counter, New 2014
- Standard Horizon GX 55005 VHF, New 2014
- Standard Horizon GX2000 VHF, New 2014
- Simrad AP70 with new hydraulic pump, New 2014
- Simrad IS15 Digital with new transducer, New 2014
- KVH HD7 Gyro Satellite antenna, New 2014
- ACR Remote spotlight, New 2014
- Clarion Bluetooth, New 2014

Aft Deck Equipment

- Teak over fiberglass deck
- Internal boat hook holder
- (8) Recessed overhead lights
- (2) Overhead stereo speakers
- (2) Aft floodlights in overhang
- Hailer speaker in overhead

- Remote closed circuit TV camera aft starboard at overhang
- Port & starboard stainless steel sliding door to Salon
- Port & starboard boarding gates with hidden hinges
- (7) Molded steps w/teak treads to Flybridge with (5) courtesy lights & handrail
- Start/stop switches & bow/stern thruster controls
- Storage locker to starboard
- High gloss teak hi lo table
- Aft bench seat with removable cushions, cover & storage below
- Port & starboard stern gate to swim platform
- Extended integral cantilever swim platform with teak sole
- Swim ladder concealed in platform hatch
- Centerline hatch in swim platform deck to storage hold
- Hot & cold shower in cabinet
- (4) Molded steps to Aft Deck with teak treads both port & starboard
- (5) Port & (5) starboard courtesy lights at steps
- (2) Underwater lights facing aft

Electrical System

- Twin 27.5 Onan generators - 1242hrs/1208hrs
- (2) 50amp shore power cords aft
- Phone and cable inlet
- LED Underwater lights, New 2014
- (2) 50 Amp shore power inlets in forward trunk
- Trac Digital stabilizer indicator
- (2) Xantrex 24 Volt to 110 Volt Battery chargers, New 2014
- Air P-700 Raw water cooling pumps, New 2014
- Mach 5 Fresh water pump with accumulator tank, New 2014
- Glendinning bridge electronic controls with sync, New 2014

Fore Deck

- Stainless steel anchor chute with roller and chain stopper
- Fresh water anchor chain wash down
- 150 lb. Stainless steel anchor with 250' of chain
- Maxwell 3500 hydraulic windlass with capstan, wildcat & two dual switches
- American Bow Thruster hydraulic bow thruster
- Courtesy lights, (4) port, (4) starboard
- Port & starboard bow deck hatches to anchor locker
- Bow seat with Gebo deck hatch to VIP Cabin
- Sun lounge recessed area on trunk cabin with removable cushions, cover & drink holders

- (2) Storage lockers in trunk cabin, one port, one starboard
- (3) Speich windshield wipers with washer system
- Portside Pantograph door to Wheelhouse
- Port & starboard mid ship boarding gates with hidden hinges
- Overhead side deck lights, (5) port & (5) starboard
- International navigation lights

Engine Room & Mechanical Equipment

- Twin Caterpillar C-30 e1550 HP engines
- Balance of Platinum 5 year CAT engine warranty - to expire Feb. 2017 or 3600 hours
- ZF Gears ZF2050A
- Triple Racor primary/dual secondary
- (3) Chill water CruiseAir MCW144
- (4) 8D Batteries on parallel
- Port and starboard Sirocco intake blowers
- 220 Volt Charles 5000 20amp 12 Volt battery charger
- 24 Volt 110 Volt Engine room lighting
- 24 Volt Gianneschi fuel transfer pump
- 24 Volt Oil exchange pump
- Bow and stern thruster pump
- Fireboy system, model Ma-1500
- Sea Recovery 900 GPD Watermaker
- Engine block heaters
- 38 HP Stern thruster
- (2) 20 Gallon water heaters
- High water bilge alarms
- Back up fresh water 24V DC pump
- ZF Transmissions 2.517:1 Ratio
- Dripless rudder seals
- 115 Volt AC Freshwater pump
- Hynautic hydraulic steering
- 3 1/2" Stainless steel shafts
- Chilled water A/C System
- Fuel tanks, forward in engine room
- American bow thruster reservoir & control panel
- American bow thruster power takeoff from port engine
- Bow thruster cooling pump
- Holding tank level indicator
- Color coded plumbing
- Bilge air circulation/ventilation fans Chilled water Marine Air air conditioning
- Fuel tanks forward in engine room in lieu of outboard of engines

Remarks

This yacht presents the very rare opportunity to purchase a like new Horizon without the "new construction" wait of 12-14 months. She has the desirable 1550 CAT's with the 5 year Platinum CAT warranty and is priced far below the replacement cost of over 3 million.

***Not For Sale To U.S. Residents While In U.S. Waters* CAT Extended Warranty In Effect Until Feb 23 2017 or 3600 hours**

Исключения

При продаже яхты исключаются личные вещи владельца.

Отказ от ответственности

Компания предоставляет описание судна или яхты добросовестно, но не может гарантировать точность этой информации, а также не ручается за техническое состояние. Покупатель должен проинструктировать своих агентов или оценщиков исследовать представленную информацию более подробно, по собственному желанию. Продажа судна или яхты, изменение цены или снятие с продажи будет происходить без предварительного уведомления.

ФОТОГРАФИИ

Salon



Salon



Salon



Salon



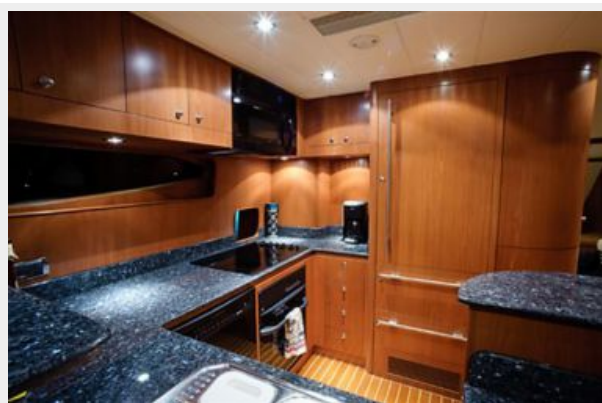
Salon



Galley



Galley



Dinette



Laundry



Day Head



Master Stateroom



Master Stateroom



Master Stateroom



Master Head



Master Head



Forward Stateroom



Guest Stateroom



Guest Head



Crew Stateroom



Crew Head



Flybridge



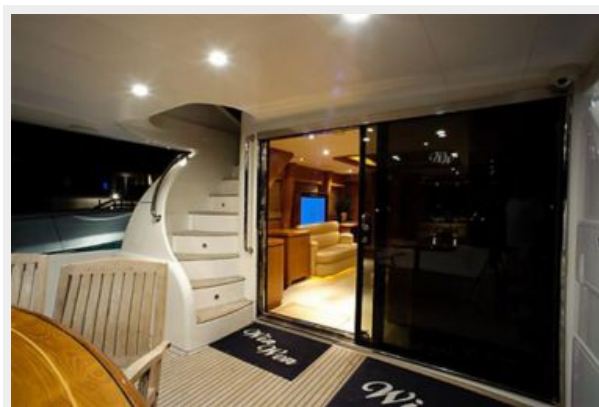
Flybridge



Aft Deck



Aft Deck



Engine Room



Engine Room



Passageway



WIN WON



Stern Profile



Bow Profile



Swim Platform



КОНТАКТЫ

Андрей Шестаков (Andrey Shestakov) – ведущий яхтенный брокер отдела продаж яхт и судов компании Shestakov Yacht Sales Inc. Официальный представитель Shestakov Yacht Sales Inc. для русскоговорящих клиентов в центральном офисе компании в Майами/Форт Лодердейл/Флорида/США.

Контактная информация

Email: andrey@shestakovyachtsales.com

Web: shestakovyachtsales.com

Телефоны

Краснодарский край: **+7(918)465-66-44**

США, Майами, Флорида: **+1(954)274-4435**

Время работы

Понедельник – Суббота: **9:00 - 21:00**
EDT

Воскресенье: **Закрито**

Адрес



Harbour Towne Marina, 850 NE 3rd St,
STE 213, Dania, FL 33004