

LETTAMELINA — WESTPORT



Судостроитель: WESTPORT

Год постройки: 2007

Модель: Моторная яхта

Цена: **ЦЕНА ЯХТЫ ПО ЗАПРОСУ**

Местонахождение: United States

Длина общая: 112' 0" (34.14m)

Ширина: 23' 9" (7.24m)

Макс. осадка: 5' 6" (1.68m)

Крейс. скорость: 24 Kts. (28 MPH)

Макс. скорость: 26 Kts. (30 MPH)

Купить **LETTAMELINA — WESTPORT** а также выбрать подходящую вам яхту из нашего каталога яхт вам поможет опытный яхтенный брокер Андрей Шестаков. На сегодняшний день компания **Shestakov Yacht Sales Inc.** имеет большое количество яхт в собственном списке продаж, а также тесно сотрудничает со всеми крупными яхтенными производителями по всему миру.

Для того чтобы купить яхту **LETTAMELINA — WESTPORT** а также проконсультироваться по любому вопросу связанному с покупкой, продажей, чартером яхт позвоните по телефону **+7(918)465-66-44**.

ОГЛАВЛЕНИЕ

ОГЛАВЛЕНИЕ	2
ХАРАКТЕРИСТИКИ	5
Основная информация	5
Размеры	5
Скорость, вместимость и масса	5
Размещение	5
Корпус и палуба	5
Информация о двигателе	6
ПОДРОБНОЕ ОПИСАНИЕ	7
Vessel Walkthrough	7
Salon	7
Dining Room	8
Galley	8
Master Stateroom	8
VIP (Forward) Stateroom	9
Guest Stateroom - Port	10
Guest Stateroom - Starboard	11
Aft Deck	11
Pilothouse	12
Pilothouse Electronics & Navigation	13
Miscellaneous Electronic Equipment	13
Flybridge Electronics & Navigation	13
Flybridge/Boat Deck	14
Foredeck	14
Walk-In Pantry	14
Crew Quarters & Utility Room	15
Mechanical Systems & Engine Room	16
Electrical System	17

Deck Equipment	17
Safety Equipment	17
Exclusions	18
Исключения	18
Отказ от ответственности	18
ФОТОГРАФИИ	19
Salon Looking Aft	19
Salon Looking Aft	19
Salon Looking Forward	19
Salon Looking Forward	19
Salon Bar	19
Entry Foyer	19
Dining Area	20
Galley Looking Forward	20
Galley	20
Galley Looking Aft	20
On Deck Head	21
Pilothouse	21
Master Stateroom	21
Pilothouse	21
Master Stateroom	21
Master Stateroom	21
Master Head	22
Master Stateroom	22
Master Head	22
VIP Stateroom	22
VIP Stateroom	22
VIP Stateroom	22
Port Guest Stateroom	23

Starboard Guest Stateroom	23
Captain Stateroom	23
Crew Dining	23
Crew Bunk	24
Crew Single	24
Engine Room	24
Aft Deck	24
Aft Deck	24
Aft Deck	24
Flybridge	25
Flybridge Bar	25
Flybridge Settee	25
BBQ	25
Boat Deck Jacuzzi & Settee	25
Boat Deck	25
Foredeck	26
Foredeck	26
КОНТАКТЫ	27
Контактная информация	27
Телефоны	27
Время работы	27
Адрес	27

ХАРАКТЕРИСТИКИ

Основная информация

Тип судна: Моторная яхта

Подкатегория: Raised Pilothouse

Модельный год: 2008

Год постройки: 2007

Страна: United States

Верх: Hardtop

Размеры

Длина общая: 112' 0" (34.14m)

Ширина: 23' 9" (7.24m)

Макс. осадка: 5' 6" (1.68m)

Скорость, вместимость и масса

Крейс. скорость: 24 Kts. (28 MPH)

Макс. скорость: 26 Kts. (30 MPH)

Водоизмещение: 258000 Pounds

Вместимость воды: 1025 Gallons

Вместимость сточного бака: 600 Gallons Объем топливного бака: 5500 Gallons

Размещение

Всего кают: 4

Корпус и палуба

Материал корпуса: Fiberglass

Информация о двигателе

Двигатели: 2

Производитель: MTU

Модель: 16V2000 DDC

Тип двигателя: Inboard

Тип топлива: Diesel

ПОДРОБНОЕ ОПИСАНИЕ

Vessel Walkthrough

NEW TO THE MARKET! "Lettamelina" features a stunning, more contemporary custom decor than most of her sisterships and was designed when new to offer a more modern, forward thinking appearance. She is in absolute Bristol, turn-key condition throughout with constant cosmetic and mechanical upgrading. The most spectacular 112' Westport now currently on the market!

Salon

- Elegant Fabrica ultra-plush carpeting throughout with carpet runners
- Custom marble aft salon door entry flooring
- Full satin cherry wood cabinetry along port and starboard outboard walls
- Elegant custom "Imperial Brown" granite countertops with custom edging, throughout Salon & Dining area
- Starboard Aft – New 55" Samsung LED TV mounted above Cherry cabinetry with Cherry countertop and custom granite edging
- Port Aft - Salon open wet bar unit with vessel sink & contemporary faucet
- Salon Wet Bar - Kitchen Aid stainless steel icemaker
- Salon Wet Bar - Granite countertops
- Salon Wet Bar - Glass & bottle Storage
- L -Shaped lengthened sectional sofa to port with designer pillows
- Single swivel occasional chair with matching ottoman
- (2) Custom low-back occasional chairs
- Contemporary wood/glass cocktail table
- Cherry oval end table
- Contemporary round end table
- Contemporary wood game table with stainless steel inlay
- (2) Custom contemporary club chairs
- Roman shade valances with silhouette shades
- Custom overhead design soffit with lighting
- Crown molding
- Majilite headliner
- Custom decor lamp selection
- Port & Starboard companionway foyers with double entry doors and custom marble flooring
- On-Deck Powder Room off starboard companionway
- Powder Room features a very contemporary decor with vessel sink, waterfall faucet, & glass block tiles
- Surround Sound Denon AVR – X4000 receiver with Middle Atlantic Thermal Amp, surround sound upgrade speakers & powered Sub-woofer

Dining Room

- Formal Dining area with custom Cherry dining table & seating for eight
- (8) Custom contemporary dining chairs with upholstered seat & backrest
- Recessed perimeter soffit with crown molding and accent light detail overhead in dining area
- Custom light contrasting ceiling headliner
- Oval domed ceiling feature with hanging dining pendant
- Granite topped raised buffets port and starboard with lower side buffets
- Custom contemporary light fixtures on forward bulkhead
- Extra accent & dining lighting
- China, stemware, and silverware storage for 12
- Padded dining room table cover

Galley

The Country Kitchen Style Galley has a more contemporary feel than most of the other 112's produced, and features a stainless steel refrigerator/freezer, stainless steel appliances, custom mini-brick grey backsplashes, Blue Eyes Granite countertops, a Black Matte Granite dining settee top, and Amtico Cherry wide plank flooring. The use of granite on the forward cowling countertop adds to a more luxurious look and contrast against the forward cherry cabinetry. New 46" LED Samsung flat screen TV is conveniently located diagonally in the starboard forward corner for better visibility throughout the galley.

- Upgrade Stainless Steel 48" Kitchen Aid Side by Side refrigerator/Freezer
- Wine enthusiast stainless steel 2-drawer dual temp wine cooler built-into galley peninsula
- Miele 4-burner touch top stove
- Dacor stainless steel 30" convection oven
- GE Stainless steel microwave/ventilation hood
- Broan stainless steel trash compactor
- Franke Instant Hot water dispenser
- ASKO stainless steel dishwasher
- Insinkerator garbage disposal
- Kohler stainless steel extra deep sink with cutting board
- Grohe LadyLux faucet
- Grohe soap dispenser
- Cooktop pan holders/fiddles
- Satellite receiver
- Speakers
- Handheld Creston remote

Master Stateroom

The Master Stateroom of "Lettamelina" is distinguished from other 112' Westports by her elegant granite countertops with custom edging, and her upscale use of stone in the His and Hers baths. Custom raised Cherry paneling above the night tables adds to the luxurious decor.

- California King size bed with upholstered headboard
- Mirrors on bulkhead above headboard
- Assist lift bunk rails for storage below
- 2 Drawers below bed
- (2) Night tables
- Upgrade raised cherry paneling above night tables
- Full sofa with decor pillows
- Upgrade cherry paneling with sea-rails on port & starboard outboard vs standard wallpaper
- "Ice cube" contemporary lamps on sofa end tables
- Upgrade hidden lockable storage starboard forward built into cherry cabinetry/drawers
- Recessed halogen room lighting
- Indirect accent lighting under bed & above soffits
- Special lighting outboard at hull side
- Overhead rope lights above berth
- Walk-in cedar-lined closet with automatic lights
- Double door formal entryway with cherry frame & madrona burl veneer panels
- 15-Drawer dresser on starboard side
- (2) End table cabinets on port side
- Digital Safe in walk-in closet
- Roman shades port & starboard with duette blinds
- Upgrade 40" Samsung LCD TV wall-mounted
- Surround Sound Receiver
- Surround Sound Speaker system w/powered Sub-woofer
- Satellite Receiver
- Multi Disk DVD/CD Player
- Handheld Creston Remote control
- MASTER STATEROOM HIS AND HERS BATHS • (2) Headhunter Royal Flush Hydrovac toilets • Marble full size walk-in shower with Euro-style frameless glass doors • Shower seat • Grohe thermostat • (2) Kohler sinks with Kohler brushed nickel fixtures & Jado accessories • Custom Stone countertops with detail edging • Custom Stone flooring • Full width vanities port & starboard • (2) mirrored medicine cabinets • Lighted make-up mirrors above each vanity • (2) Free-standing vanity stools • Fixed mirrors on forward bulkhead • A-look mirror headliner • Linen lockers port & starboard • Clothes hampers port & starboard • Recessed halogen room lights • Vanity lights

VIP (Forward) Stateroom

The VIP (Forward) Stateroom is separate from the 3 other staterooms in the Owner's party and is forward of the Country Kitchen. It features a queen centerline bed with assist-lift storage

underneath, an elegant ensuite bath, 23" flat screen TV with full audio/video entertainment system, a huge walk-in closet, a settee in the starboard aft section, ample drawer and cabinet space, and a beautiful contemporary decor and lighting package.

- Recessed Halogen lighting
- Indirect accent lighting under berth and above soffit
- Mirrors on forward bulkhead above headboard
- Cedar-lined walk-in closet with automatic lighting
- Recessed Madrona Burl countertops
- 24' Round hatch above bed
- Satin Cherry trim & finish
- (2) Built-in bookcases at headboard
- Vanity desk portside
- Cabinet in stairwell locker
- Custom upholstered Settee
- Shoji Screens on port and starboard outboard walls
- Entertainment Center with cherry doors and 4 drawer dresser below
- 23" LCD flatscreen TV
- Satellite Receiver
- Surround Sound Receiver
- DVD/CD Player
- Handheld Creston remote control
- VIP (FORWARD) STATEROOM BATH • Headhunter Royal Flush Hydro Vac Toilet • Shower with Eurostyle frameless glass door • Cherry Vanity with sink • Stone countertops with custom edging, • Framed mirror above vanity • Recessed halogen lighting & vanity lighting • Custom stone flooring

Guest Stateroom - Port

- Queen walk-around bed with upholstered headboard & assist lift storage underneath
- Recessed halogen lighting
- Contemporary custom reading lamps
- Indirect accent lighting under berth & above soffit
- 4-Drawer storage underneath berth
- Mirrors on aft bulkhead above headboard
- Optional cherry veneer outboard paneling with sea-rail vs standard wallpaper
- Cedar-lined closet w/auto light
- Satin Cherry Wood finish
- Recessed countertops in Madrona burl wood with solid cherry edging
- (2) Port light openings with screens & privacy insert
- Roman Shades and duette blinds
- (2) three drawer nightstands
- 5-Drawer dresser

- Entertainment Center in cherry cabinetry with 5 drawer dresser below
- 23" LCD TV with satellite receiver
- Surround sound receiver
- DVD/CD Player
- Creston Remote control
- PORT GUEST STATEROOM BATH • Headhunter Royal Flush Hydro Vac Toilet • Shower with Eurostyle frameless glass doors • Kohler sink • Cherry vanity with marble countertops • Mirror above vanity • Custom stone flooring • Recessed Halogen lighting & vanity lighting

Guest Stateroom - Starboard

- Twin berths with upholstered headboard
- Inboard berth is movable to outboard berth to form queen berth
- 1-Drawer under each berth
- Recessed Halogen lighting
- Contemporary custom reading lamps
- Indirect accent lighting under berths & above soffit
- Mirror on aft bulkhead above headboard
- Optional cherry veneer outboard paneling with sea rail vs standard wallpaper
- Roman shades and duette blinds
- Cedar-lined closet w/auto light
- Satin Cherry wood finish
- Recessed countertops in Madrona Burl with solid cherry edging
- 3-Drawer night table
- Entertainment center in Cherry cabinetry with 5-drawer dresser below
- 23" LCD TV with satellite receiver
- Surround sound receiver
- DVD/CD Player
- Creston remote control
- STARBOARD GUEST STATEROOM BATH • Headhunter Royal Flush Hydro Vac Toilet • Shower with Eurostyle frameless glass doors • Kohler sink • Cherry vanity with marble countertops • Mirror above vanity • Custom stone flooring • Recessed halogen lighting & vanity lighting

Aft Deck

The Aft Deck of "Lettamelina" features a custom U-shaped Settee versus the standard bench type settee allowing for a more comfortable and intimate gathering around a custom high-gloss Teak dining table. The table can rotate or move back and forth on a hi-lo electric base. There are custom cushions, pillows, and covers for the settee. There are also 2 beautiful single hi-gloss teak chairs with cushions and covers for additional seating. To port forward is the aft deck wet bar with "Blue Eyes" granite countertops and 3 hi-gloss teak bar stools with cushions. A diagonal 32'

flat screen TV above the bar unit allows visibility throughout the aft deck.

- Teak decks with teak swim platform and steps
- Sink with hot & cold water - wet bar
- GE Refrigerator/Freezer - wet bar
- Whirlpool Icemaker - wet bar
- Bar storage & barware cabinet
- Optional Port & Starboard Fiberglass integral boarding doors allows for easy Aft Deck boarding
- Spiral staircase to Flybridge
- Spiral staircase to Engine Room & Crew Area
- Satellite Receiver
- (2) pairs of speakers
- Handheld waterproof Creston remote control
- Storage lockers located in Port & Starboard bulwarks
- Pacific Coast Marine Stainless Steel Electric Automatic/manual Salon Entry Double Doors
- Widened Pacific Coast Marine watertight door from Swim Platform to Utility/Crew/ Engine Room

Pilothouse

The Pilothouse of the 112' Westport is much more than a control and navigation station. It is an incredibly spacious room with a large settee and table for entertaining, and a room for appreciating the perfect interior visibility while underway. "Lettamelina's" Pilothouse gives one the feeling of even more spaciousness through the use of very light neutral-toned headliner, upholstery, carpeting, and windshield mullions without creating any glare for piloting and navigation.

- Stidd 500SL low back helm chair
- Leather Settee
- Settee Table with madrona burl top and waterfall cherry edging 7 SS grab rail
- Desk/Nav Station with madrona burl top, waterfall cherry edging, & stool
- Sliding Hatch to Flybridge with staircase
- Control Console - leather with leather dash hoods
- Wooden 24" Destroyer type Helm station wheel
- Chart drawers adjacent to console
- Built-in cherry bookcases on aft bulkhead
- Fax cabinet
- 6" Weems & Plath ships clock & barometer
- Sunscreen cover for windshield
- 15" LCD flatscreen TV
- Shared satellite signal
- Handheld Creston remote

Pilothouse Electronics & Navigation

- Ritchie Globemaster F-600 Compass
- (2) Furuno FAR-2117 Radars with 19" display
- Furuno FCV 1200BB-P Depth Sounder with 15' LCD Monitor
- Furuno GP-90D GPS
- Transas Navisailor NS3000 Navigation/Electronic Chart System with 19" LCD display
- Charts from Seattle WA to Ft. Lauderdale, FL
- (2) ICOM M602 VHF Radios
- Furuno FS 1503 Single Side Band Radio
- Loudhailer integrated with VHF Radio
- B & G Digital Wind/Depth/Speed with HS2000 full functional display
- SIMRAD AP-50 Autopilot System
- Furuno Fax 207 WeatherFax
- NEC AccuSynch 52V 15" LCD Nav Station repeater

Miscellaneous Electronic Equipment

- IntelliSea Model IS-1 Security System
- Crestron Audio/Video distribution system controlled through wireless remote pod
- Telular Cellular phone system
- ST60 Digital Depth Sounder in Captain's quarters
- Sea Tel 3004 Satellite TV System with 8 satellite receivers
- KVH Fleet 33 Satellite Telephone System
- Panasonic telephone System - 16 stations/10 programmable phones/18 jacks
- 100' Combo CATV telephone shore cord
- Elbex High Resolution Camera System with optional full pan/zoom/tilt on aft deck & engine room and fixed position on P & S side decks
- G.P.I.R.B - Northern Airborne Technology NA-S1520
- Internet Connectivity through Sat Phone with broadband router and 2 wireless remote access points for remote connection throughout boat

Flybridge Electronics & Navigation

- B & G Compass
- Furuno Radar repeater
- Furuno GP-90D GPS
- ICOM M602 VHF Radio
- Loudhailer integrated with VHF Radio
- Simrad AP-50 Autopilot System
- Nauticomp 19" LCD display repeater

Flybridge/Boat Deck

- WESTPORT FACTORY HARDTOP WITH 3-SIDED EZ2CY ENCLOSURE
- Welded aluminum mast
- Optional (3) Stidd helm chairs with footrests
- Large L-shaped molded settee with cushions with storage below
- Elongated oval high-gloss Teak dining table
- "Blue Eyes" Granite wet bar, with four custom barstools which feature teak backrests & designer cushions
- Stainless steel Scotsman icemaker - Wet bar
- Stainless steel U-Line 2-drawer refrigerator - wet bar
- Stainless steel 30" BBQ Grill w/hood & cover- wet bar
- Sink - wet bar
- TV/phone jacks - wet bar
- (2) Pairs of speakers
- Handheld waterproof Creston remote control
- Molded in Spa/Hot tub with sun pad & storage below with multi-color and sequential lighting features
- Sunpad with cushions & covers
- L-shaped settee on boat deck with coordinating cushions & covers
- High Gloss teak table for boat deck settee
- DAVIT: 2000 lb. Nautical Structures with full rotation & wireless control
- Removable chocks & lifting bridge for tender
- 2012 17' ABDLX Wide-body tender w/115 hp 4 stroke Yamaha outboard
- Stainless steel rails with optional integrated life raft storage on port & starboard outboard sides - giving more deck space
- Kahlenberg T2-372 Air Horn
- Integral "flip up" port & starboard wing stations each with engine controls, synchronizer, jog lever, bow thruster controls, rudder angle indicator, start/stop switches
- Venturi windshield
- Full Flybridge helm station

Foredeck

- Bow sun lounge with cushions & cover
- Molded 3/4 round keyhole settee with cushions & cover
- Storage locker with 110V outlet & lights
- Speakers
- Handheld waterproof Creston remote control

Walk-In Pantry

The walk-in pantry is located off of port companionway on the Main Deck level.

- Pantry storage
- Heartland stainless steel extra-large capacity refrigerator/freezer
- Meile washer & Meile dryer
- Door to Electronics Systems & AV room

Crew Quarters & Utility Room

The Crew Quarters, Utility Room, and Engine Room are accessed either by the spiral staircase which descends from the Aft Deck, or by the watertight transom door on the swim platform. Forward to Port is the spacious crew galley with engine room door forward and center. The yacht's electrical distribution panel is located starboard forward with second washer and dryer located below. Across and aft of the Galley is the L-shaped upholstered Crew Lounge with settee table. The Captain's Stateroom is to port with double bed and en-suite head and shower. The second Crew Stateroom is to starboard with over under berths, and the third Crew Stateroom is port aft with single berth. The second and third Crew Staterooms share a head with shower. Aft to port is the utility area with dual Glendinning Cablemaster shore cord bins, freezers, and accessory storage. The watertight transom door to the swim platform is in this area.

- All crew berth's with innerspring mattresses and storage below
- 110AC Recessed room lights & 24V DC reading lights
- Cedar-lined closets
- Captain's closet with safe
- All countertops are neutral toned solid surface Corian
- Duette blinds
- Cherry trim
- Crew galley includes new built-in refrigerator, microwave, & sink
- Galley upper & lower cherry cabinets
- Crew Lounge entertainment center
- 20" LCD TV
- Satellite Receiver
- Radio/DVD/CD Player
- (1) Pair speakers
- Handheld Creston remote control
- Captain's Quarters - 15" LCD TV, Sat Receiver, Radio/DVD/CD Player & Creston remote
- 2nd & 3rd Crew Quarters -each have 15" LCD TV, Radio/DVD/CD player & shared sat receiver
- Captain Quarters: nightstand, desk, dresser, cabinet above berth, drawers
- Crew Quarters: drawers under berths, and wardrobe closets
- CAPTAIN'S HEAD • Galley Maid freshwater head • Shower with tempered glass doors • Kohler sinks & Grohe fixtures • Wall mirror above vanities • Cherry vanities • Amtico vinyl flooring • Corian countertops • Recessed room lights and vanity lights

Mechanical Systems & Engine Room

- Four station MDEC controls
- Port & starboard recessed flip-up wing stations
- Integrated station selection & shifter control
- MDEC Synchronizers
- Underwater exhaust
- American 40hp bow thruster with 4-station controls
- 220V Air compressor
- Fuel tank site tube level indicators
- Intellisea fuel & water tank monitoring system
- 100 Gallon gas tank under hatch in swim platform
- Sea Pro-8 fuel filters for Mains
- Sea Pro-50 fuel filters for Gens
- Fuel Transfer system with flow meter & timer
- FM200 Fire Suppression automatic & manual system in Engine Room & electrical panel
- Lube oil change system (60/gal. lube & 50/gal. waste)
- Dripless shaft logs & rudder logs
- NAIAD #353 Stabilizers with 9 sq. ft. fins
- Exalto windshield wipers & washers
- Jastram 4-station power steering
- 15 Ton Chilled Water air conditioning system
- Upgraded to (2) inline air conditioning raw water pumps
- (8) Remote mounted 24V electric bilge pumps w/auto/manual switches & alarms
- (2) 120V Emergency bilge pumps
- (2) Sea Recovery SRC AWC 1200 GPD watermakers
- Optional Media (Sand) filtration system for watermakers
- (2) 220V AC Freshwater Pumps
- 24V Back-up Pressure Freshwater Pump
- 80 Gallon Hot Water Heater
- 38 Gallon Hot Water Heater
- Hot & Cold Shower in locker on swim platform
- Freshwater washdowns fore/aft/boat decks with quick disconnects
- HEADHUNTER MSD Treatment System for black & gray water
- 6-Drawer Tool Box
- Bright White Engine Room paint package
- Stainless steel workbench with 4" Vice
- Storage cabinets throughout engine room
- Wheel Puller for vessel's propellers
- (6) Underwater lights with multi-color and sequential features
- Upgrade Steri-light freshwater filtration system
- (2) Aqua Pure water filters
- New Black Diamond flooring

Electrical System

- (2) Northern Lights 65kW generators
- Sound Shields for generators
- Optional Power Take Offs on both generators
- Generator remote start/stop in Pilothouse
- (2) 100 AMP 240V Single Phase shore power cords with Glendinning Cablemaster electric reels
- (2) 100 AMP Westport/Acme/WPSY Isolation Transformers with 1-step automatic voltage adjustment
- Charles Smart-Y 100 Shore Adapter
- IntelliSea Model IS-1 Vessel Information and Control System for bilge pumps, gray water pumps, black water tanks, 14 heat sensors, 13 smoke alarms, 4 CO alarms, vessel security system, AC voltage supply, tank levels, and BBQ grill lid.
- ALL AGM cell type batteries throughout
- (4) Battery Chargers
- (3) King heater/defrosters in Pilothouse

Deck Equipment

- (2) VWC 4500# Maxwell hydraulic winches with band brakes
- Dual Poole style 300 lb. anchors with polished stainless steel anchor plates
- 5/8" Chain rollers, stoppers, and devil's claws
- (1) 250' & (1) 350' 5/8" chain for 2 anchors
- Anchor chain wash-down system
- (2) Stern Maxwell 2200# 24V DC capstans
- Fenders, fender hangers & cleats, dock lines
- Custom Marquipt swim ladder attaches to Swim Platform
- Marquipt 7-step Sea Stairs with handrail
- Marquipt manual passerelle
- ACR-RCL-100 Searchlight with dual controls
- Custom stainless steel shower with "rain-type" shower head attaches to the Swim Platform

Safety Equipment

- (2) 8-Man life rafts mounted on port & starboard boat deck rails creating more deck space
- Life Preservers, 2 ring buoys, flares, ship's bell
- Medical kit
- Fire Suppression System (see mechanical section)
- Fire extinguishers

Exclusions

- Owner's personal items and 2012 11' Yamaha Jet Ski. A detailed list will be provided at the time of sale, upon written request.

Исключения

При продаже яхты исключаются личные вещи владельца.

Отказ от ответственности

Компания предоставляет описание судна или яхты добросовестно, но не может гарантировать точность этой информации, а также не ручается за техническое состояние. Покупатель должен проинструктировать своих агентов или оценщиков исследовать представленную информацию более подробно, по собственному желанию. Продажа судна или яхты, изменение цены или снятие с продажи будет происходить без предварительного уведомления.

ФОТОГРАФИИ

Salon Looking Aft



Salon Looking Aft



Salon Looking Forward



Salon Looking Forward



Salon Bar



Entry Foyer



Dining Area



Galley Looking Forward



Galley



Galley Looking Aft



On Deck Head



Pilothouse



Pilothouse



Master Stateroom



Master Stateroom



Master Stateroom



Master Stateroom



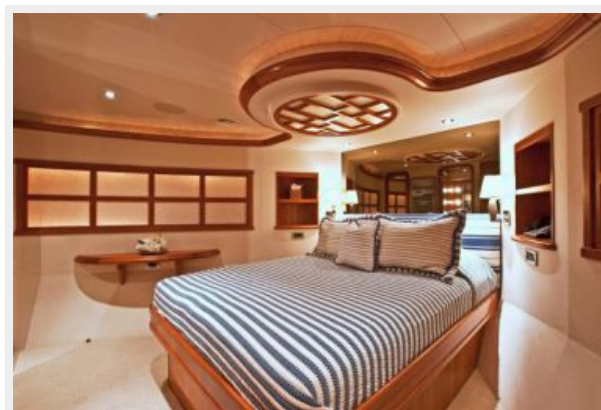
Master Head



Master Head



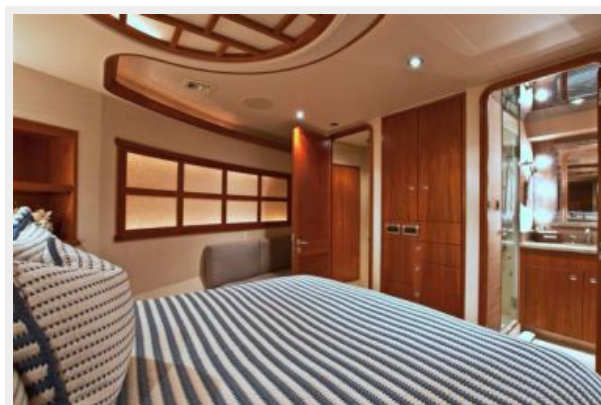
VIP Stateroom



VIP Stateroom



VIP Stateroom



Port Guest Stateroom



Starboard Guest Stateroom



Captain Stateroom



Crew Dining



Crew Bunk



Crew Single



Engine Room



Aft Deck



Aft Deck



Aft Deck



Flybridge



Flybridge Bar



Flybridge Settee



BBQ



Boat Deck Jacuzzi & Settee



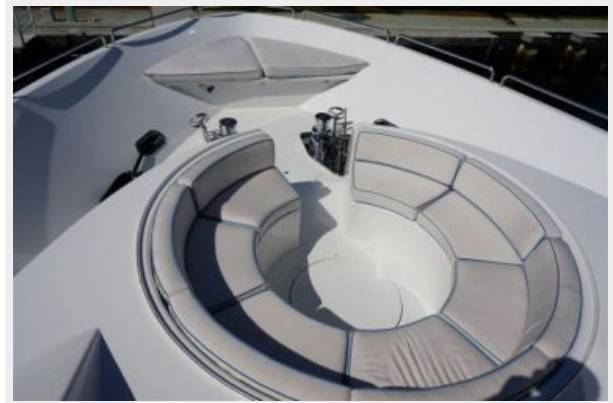
Boat Deck



Foredeck



Foredeck



КОНТАКТЫ

Андрей Шестаков (Andrey Shestakov) – ведущий яхтенный брокер отдела продаж яхт и судов компании Shestakov Yacht Sales Inc. Официальный представитель Shestakov Yacht Sales Inc. для русскоговорящих клиентов в центральном офисе компании в Майами/Форт Лодердейл/Флорида/США.

Контактная информация

Email: andrey@shestakovyachtsales.com

Web: shestakovyachtsales.com

Телефоны

Краснодарский край: **+7(918)465-66-44**

США, Майами, Флорида: **+1(954)274-4435**

Время работы

Понедельник – Суббота: **9:00 - 21:00**
EDT

Воскресенье: **Закрито**

Адрес



Harbour Towne Marina, 850 NE 3rd St,
STE 213, Dania, FL 33004