

## RENAISSANCE — DUTCH FLYER



**Builder:** DUTCH FLYER

**Year Built:** 1983

**Model:** Cruising Sailboat

**Price:** PRICE ON APPLICATION

**Location:** United States

**LOA:** 31' 0" (9.45m)

**Beam:** 10' 8" (3.25m)

**Max Draft:** 5' 5" (1.65m)

Our experienced yacht broker, Andrey Shestakov, will help you choose and buy a yacht that best suits your needs **Renaissance — DUTCH FLYER** from our catalogue. Presently, at Shestakov Yacht Sales Inc., we have a wide variety of yachts available on our sale's list. We also work in close contact with all the big yacht manufacturers from all over the world.

If you would like to buy a yacht **Renaissance — DUTCH FLYER** or would like help answering any questions concerning purchasing, selling or chartering a yacht, please call **+1(954)274-4435**

# TABLE OF CONTENTS

TABLE OF CONTENTS	2
SPECIFICATIONS	4
Overview	4
Basic Information	4
Dimensions	4
Speed, Capacities and Weight	4
Accommodations	5
Hull and Deck Information	5
Engine Information	5
DETAILED INFORMATION	6
Accommodations	6
Galley	6
Sails & Rigging	7
Deck Equipment and Hull	7
Electronics & Navigation	8
Electrical	8
Mechanical	9
Exclusions	9
Disclaimer	9
PHOTOS	10
Renaissance under sail	10
Starboard view	10
Stern Quarter	10
Stern View	10
Dodger and Bimini has Full Enclosure	10
Cockpit Seating	10
Companionway	11
Teakwood Wheel and GPS/Radar	11

---

Solar Panels	11
Layout Diagram	11
Salon seating	11
Dining table	11
Port Settee and Storage	12
Spacious Interior	12
Salon Sette without tan slipcovers	12
Yanmar 28 hp Rebuilt 2001	14
Mast and Rigging	15
Fully Battened Main 2001	15
New Teak Decks 2004	15
Lines to Cockpit	15
Lines to Cockpit	15
Primary Winches	15
Bench Settee and Storage	16
Hanging Locker and Pantry	16
More Provisioning Room	16
Refrigeration and Freezer	16
Sistership Bottom Configuration	16
<b>CONTACTS</b>	<b>17</b>
Contact details	17
Telephones	17
Office hours	17
Address	17

---

# SPECIFICATIONS

---

## Overview

---

**PRICE REDUCED - ESTATE SALE - MUST GO NOW!** The Dutch Flyer 31, Piewiet 930 was built at the shipyard van de Rest Nautic bc in Holland. Now a USCG documented vessel. European styling, quality construction, well designed interior that is warm and inviting and has a feeling of a much larger vessel. This vessel has been continually well maintained throughout her entire ownership and is a nice liveaboard and cruiser.

**Upgrades include: Fresh "Bahamas" bottom paint (2014), Teak decks (new 2004), 27 hp Yanmar engine (Re-built 2001), Sail Drive (new 2003), Sails (new 2001).**

**Fully equipped with full enclosure, boom and foredeck tents, Solar panels, autopilot, GPS/Radar...**

**CURRENTLY IN A TRANSFERABLE LIVEBOARD SLIP IN FORT PIERCE, FL!**

**You will want to see this one!**

## Basic Information

---

**Category:** Cruising Sailboat

**Sub Category:** Sloop

**Model Year:** 1983

**Year Built:** 1983

**Country:** United States

## Dimensions

---

**LOA:** 31' 0" (9.45m)

**LWL:** 25' 3" (7.70m)

**Beam:** 10' 8" (3.25m)

**Max Draft:** 5' 5" (1.65m)

## Speed, Capacities and Weight

---

**Displacement:** 9900 Pounds

**Water Capacity:** 30 Gallons

**Fuel Capacity:** 28 Gallons

---

## Accommodations

---

**Total Cabins:** 2

**Total Heads:** 1

---

## Hull and Deck Information

---

**Hull Material:** Fiberglass

---

## Engine Information

---

**Engines:** 1

**Manufacturer:** Yanmar

**Model:** 3GMF Re-built 2001

**Engine Type:** Inboard

**Fuel Type:** Diesel

---

# DETAILED INFORMATION

---

## Accommodations

---

Upon entering the companionway you will find the tiled counter L shaped galley to starboard with the private head just aft. Opposite to port is a forward facing navigation desk with a comfortable seat. The private Guest cabin is aft. The central salon is surprisingly roomy and has the feeling of a much larger vessel. The extra long bench settee to port has numerous lockers and storage cabinets both behind and underneath. The U shaped settee to starboard also boasts generous locker space and has a fold down table that converts to an extra berth. The private V berth has storage bins and shelves. Throughout the vessel you find the doors and bulkheads are made of solid teak.

- 2 private cabins/1 head layout
- Solid Teak woodwork throughout
- Teak and holly sole
- Upholstery in good condition
- Teak table converts to berth
- Aquos Flatscreen TV
- Bookshelves and numerous lockers
- Bomar (4) Overhead hatches (new 2004)
- Lexan skylight at companionway
- round ventilation ports
- fixed portlights w/ curtains
- 12V fans
- LED reading lights
- Private V berth w/filler, shelves and lockers
- Private Guest quarterberth is a large single or small double w/hanging locker
- DVD player
- Head with vanity sink, handheld shower and Lectrasan head

## Galley

---

This L shaped galley boasts a ceramic inlaid tile counter w/ teak fiddles, large round sink, extra counter top panel over the stove and teak cabinetry. There is an abundance of storage cabinets to accommodate the needs of a liveaboard or long term cruiser.

- Eno propane 2 burner stove and oven
- Deep Frigoboat top loading refrigeration and small freezer (2004)
- round SS sink
- pressure water system
- footpump
- hot water heater

- deep slide out drawers
- bottle storage
- generous provisioning room

---

## Sails & Rigging

---

- Fully battened Main (2001) w/tan sailcover
- 150% Genoa (2001)w/ sacrificial cover
- roller furling unit
- running rigging good condition
- lines lead to cockpit for easy handling
- (2) sets of 3 Lewmar line clutches
- (2) 24# Enkes ST 2 speed Primary winches
- (2) 18# Enkes winches in cockpit
- Traveller in cockpit
- Gauerhauer vang
- Genoa track and cars
- split backstay

---

## Deck Equipment and Hull

---

- Tan Sunbrella dodger, bimini and full eisenglass enclosure and screen enclosure
- Sunbrella boom tent and foredeck tent
- solid SS stern rails w/swim ladder
- double lifelines and stanchions
- wide side gates at cockpit
- long bench seating in cockpit
- teak planking on seats and cockpit sole
- helm seat
- teak rimmed steering wheel on binacle
- deep lazarette storage
- (2) cockpit bins
- sliding companionway hatch w/lexan skylight
- teak hatch boards
- Lifesling
- (2) rod holders)
- outboard mount
- BBQ grill
- flag mount
- teak handrails on cabintop
- heavy cleats
- SS bow rail
- double anchor roller

- anchor locker
- folding anchor/chain and rode
- starboard side rails for jerry jugs
- boat pole
- lines and fenders
- Teak rub rail
- Teak Decks (new 2004)

---

## Electronics & Navigation

---

- Raytheon ST4000+ Autopilot w/ remote
- Ritchie compass
- Furuno GPS/Radar
- Datamarine wind, speed, depth
- ICOM M802 SSB
- ICOM 502 VHF w/ ram mic in cockpit (2004)
- JVC MP3 stereo
- Bose speakers
- Sanyo DVD/VCR player
- Triax Glomex TV antenna

---

## Electrical

---

- 12vDC and 110vAC
- (2) Group 4D Batteries (2012)
- (1) Group 27 Battery
- Battery selector switch
- (3) Solar panels on SS bracket 120 watts
- Blue Seas controller
- High output alternator
- Trucharge 40 amp Battery Charger
- 40amp circuit breaker between shore power and inverter
- Xantrex 1000 watt sine wave inverter (new 2004)
- Electric panel
- Bonding system
- Galvanic isolator
- (2) GFI receptacles
- Polarity indicator
- 30 amp shore power inlet
- 30 amp shore power cord



---

## Mechanical

---

- 28hp Yanmar 3GMF rebuilt in 2001
- Yanmar Sail drive SD20 , New 2003
- well insulated engine compartment
- 28 gallon fuel capacity
- Alternator
- Racor filter
- Sea strainer
- Vetus muffler
- Wheel steering with attractive teakwood rimmed wheel
- 2 bladed aluminum prop
- spare bronze prop
- Rule bilge pump
- emergency manual whale gusher bilge pump
- CO2 detector

---

## Exclusions

---

Owner's personal belongings.

---

## Disclaimer

---

The Company offers the details of this vessel or yacht in good faith but cannot guarantee or warrant the accuracy of this information nor warrant the condition of the vessel. A buyer should instruct his representatives, agents, or his surveyors, to investigate such details as the buyer desires validated. This vessel or yacht is offered subject to prior sale, price change, or withdrawal without notice.

# PHOTOS

**Renaissance under sail**



**Starboard view**



**Stern Quarter**



**Stern View**



**Dodger and Bimini has Full Enclosure**



**Cockpit Seating**



**Companionway**



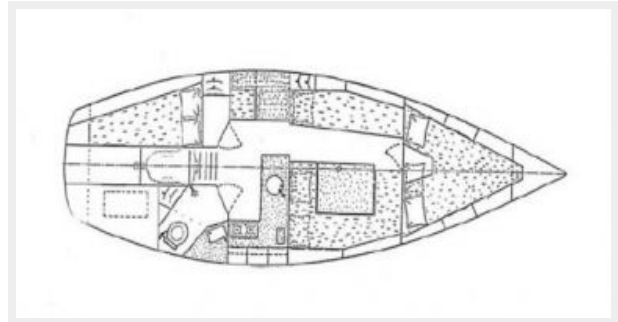
**Teakwood Wheel and GPS/Radar**



**Solar Panels**



**Layout Diagram**



**Salon seating**



**Dining table**



### Port Settee and Storage



### Spacious Interior

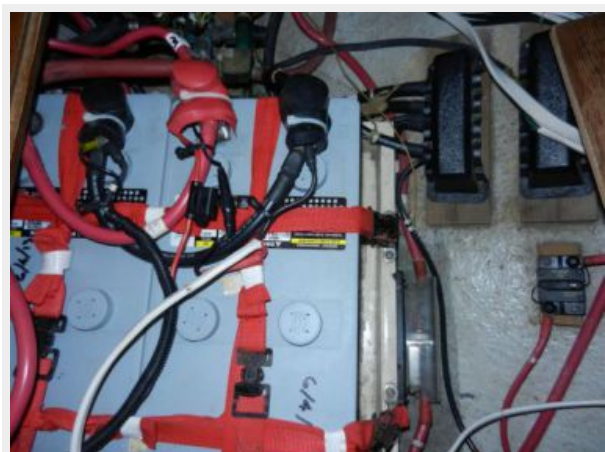
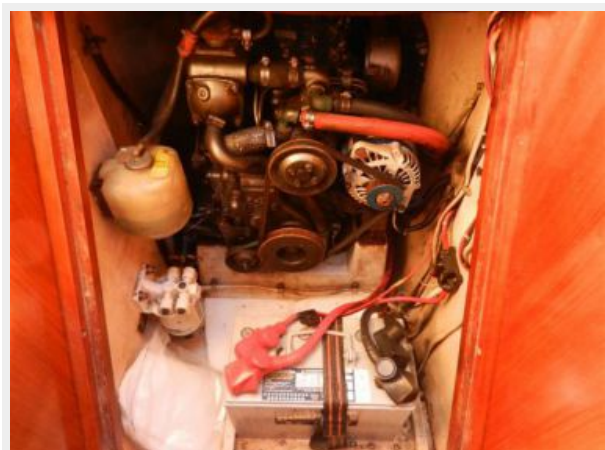


### Salon Sette without tan slipcovers





### Yanmar 28 hp Rebuilt 2001



### Mast and Rigging



### Fully Battened Main 2001



### New Teak Decks 2004



### Lines to Cockpit



### Lines to Cockpit



### Primary Winches



### Bench Settee and Storage



### Hanging Locker and Pantry



### More Provisioning Room



### Refrigeration and Freezer



### Sistership Bottom Configuration





---

# CONTACTS

---

Andrey Shestakov, leading yacht broker of the sales department of Shestakov Yacht Sales Inc. Shestakov Yacht Sales Inc., the official representative of the Miami/Fort Lauderdale FL headquarters.

---

## Contact details

---

Email: [andrey@shestakovyachtsales.com](mailto:andrey@shestakovyachtsales.com)

Web: [shestakovyachtsales.com/en/](http://shestakovyachtsales.com/en/)

---

## Telephones

---

USA: +1(954)274-4435

---

## Office hours

---

Monday – Saturday: **9:00 - 21:00** EDT

Sunday: **closed**

---

## Address

---



Harbour Towne Marina, 850 NE 3rd St,  
STE 213, Dania, FL 33004