

R & R — VIKING



Builder: VIKING

LOA: 61' 0" (18.59m)

Year Built: 2004

Beam: 18' 5" (5.61m)

Model: Sport Fisherman

Price: PRICE ON APPLICATION

Location: United States

Our experienced yacht broker, Andrey Shestakov, will help you choose and buy a yacht that best suits your needs **R & R — VIKING** from our catalogue. Presently, at Shestakov Yacht Sales Inc., we have a wide variety of yachts available on our sale's list. We also work in close contact with all the big yacht manufacturers from all over the world.

If you would like to buy a yacht **R & R — VIKING** or would like help answering any questions concerning purchasing, selling or chartering a yacht, please call **+1(954)274-4435**

TABLE OF CONTENTS

TABLE OF CONTENTS	2
SPECIFICATIONS	5
Basic Information	5
Dimensions	5
Speed, Capacities and Weight	5
Accommodations	5
Hull and Deck Information	5
Engine Information	5
DETAILED INFORMATION	6
Salon	6
Galley	6
Companionway	6
Master Stateroom	7
Master Head	7
Forward Guest Stateroom	7
Forward Head	8
Starboard Guest Stateroom	8
Starboard Head	8
Flybridge	8
Flybridge Electronics	9
Cockpit	9
Deck Equipment	10
Hull	10
Decor	10
Mechanical Equipment	11
Exclusions	11
Disclaimer	11
PHOTOS	12

Salon	12
Salon	12
Salon	12
Salon	12
Dinette	12
Salon	12
Dinette	13
Galley	13
Galley	13
Companionway	13
Washer/Dryer	14
Master Stateroom	14
Master Stateroom	14
Master Stateroom	14
Master Stateroom Head	15
Forward Stateroom	15
Forward Stateroom Head	15
Forward Stateroom	15
Guest Stateroom	16
Guest Stateroom	16
Guest Stateroom Head	16
Cockpit	16
Cockpit	17
Cockpit	17
Cockpit	17
Cockpit	17
Cockpit	17
Flybridge	17
Flybridge	17
Flybridge	18

Flybridge	18
Flybridge	18
Flybridge	18
Flybridge	18
Bow	18
Bow	19
Engine Room	19
Engine Room	19
Engine Room	19
Engine Room	19
Engine Room	19
Engine Room	19
Engine Room	20
Engine Room	20
Engine Room	20
R & R	20
R & R	21
R & R	21
R & R	21
R & R	21
CONTACTS	22
Contact details	22
Telephones	22
Office hours	22
Address	22

SPECIFICATIONS

Basic Information

Category: Sport Fisherman

Model Year: 2005

Year Built: 2004

Country: United States

Dimensions

LOA: 61' 0" (18.59m)

Beam: 18' 5" (5.61m)

Speed, Capacities and Weight

Water Capacity: 316 Gallons

Holding Tank: 200 Gallons

Fuel Capacity: 1843 Gallons

Accommodations

Total Cabins: 3

Hull and Deck Information

Hull Material: Fiberglass

Engine Information

Engines: 2

Manufacturer: Caterpillar

Model: C32

Engine Type: Inboard

Fuel Type: Diesel

DETAILED INFORMATION

Salon

- New Sony Surround Sound theater system and BlueRay
- Electric panel up
- Full canvas carpet runner
- Kenmore clear icemaker
- Quartz light dimmers
- Amtico Teak & Holly flooring at salon entrance to entertainment center
- Custom wrapped fabric valences (Sensuade Latte)
- Custom 46" LED TV above dinette trimmed in Teak
- Upgraded style U-shaped sofa (Brisa Distressed Rodeo)
- Dimmers on overhead halogen lights
- Teak chart flat
- Teak dinette table with teak pedestal
- Custom covers for salon sofa
- Dinette seating w/storage

Galley

- Under counter refrigerator and freezer with drawers
- Trash compactor
- Under mount stainless steel sink
- 4-burner surface mount range
- Microwave/convection oven
- Water level gauge
- Exhaust fan
- Garbage disposal
- Additional under counter refrigerator with drawers
- Amtico Teak & Holly floor
- Dimmer switches for lighting
- Custom Venetian Gold Granite countertops
- Upper cabinet storage with large pull-out drawers
- Water pump indicator

Companionway

- Dimmers on overhead lighting
- Bilge storage and access
- Washer and dryer

- Carpet runner w/step covers
- Central vacuum

Master Stateroom

- Athwartship master bed, king size w/storage below
- Custom wallpaper
- Sony stereo/DVD player entertainment surround system
- 42" HD TV
- Dimmers for overhead lighting
- Upholstered headboard
- His and her walk-in, cedar-lined closets (one converted to rod storage)
- Upgraded mattress
- End tables with Teak top surface
- Entry credenza with Teak top surface

Master Head

- Custom Venetian Gold granite vanity top with bone sink
- Brass fixtures
- Custom wallpaper
- Teak face on lower vanity
- Exhaust fan
- Linen storage
- Medicine cabinet with mirror
- Mirror around upper vanity insert
- Amtico Teak & Holly flooring
- One-piece custom frameless shower door
- Full-size head (Magnum opus)

Forward Guest Stateroom

- Orthopedic mattress upgrade
- Dimmer switches for lighting
- Cedar-lined hanging locker
- Stereo speakers
- VIP crossover layout
- Custom wallpaper
- 20" HD TV

Forward Head

- Teak face on lower vanity
- Mirror around upper vanity insert
- Amtico Teak & Holly flooring
- Brass fixtures
- Exhaust fan
- Linen storage
- Custom Venetian Gold granite vanity top with bone sink
- Full-size head (Magnum Opus)
- Custom wallpaper
- Medicine cabinet with mirror

Starboard Guest Stateroom

- Dimmer switches for lighting
- TV outlet
- Lift-up cedar-lined storage below lower berth
- Storage drawers
- Upper and lower berth arrangement
- Custom wallpaper
- Cedar-lined hanging locker
- Stereo speakers

Starboard Head

- Amtico Teak & Holly flooring
- Mirror around upper vanity insert
- Brass fixtures
- Full-size head (Magnum Opus)
- Exhaust fan
- Linen storage
- Teak face on lower vanity
- Custom Venetian Gold granite vanity top with bone sink
- Custom wallpaper
- Medicine cabinet with mirror

Flybridge

- Electronic trolling valves
- Custom Teak helm pod
- Recessed electronics boxes

- Storage freezer & refrigerated drink box
- Dual thermostat on freezer
- Caterpillar single lever controls
- Handrail below underside of flybridge
- Push knob catches for electronics boxes
- 110V outlet below console
- Buell horns
- Removable flybridge jumpseat backrest
- Upgraded helm chairs
- Freshwater outlet on bridge in starboard cabinet
- Upgraded drip dry foam for flybridge cushions
- Upgraded track-to-track Strataglass
- EZ2CY 4-sided enclosure
- Hardtop
- Outriggers
- Center rigger
- Rocket launcher with extra rod holders
- Air conditioning on flybridge
- New Cushions
- Carpet throughout bridge
- Bow thruster control next to pod

Flybridge Electronics

- (2) Icom 602 VHF radio
- Moritz monitor
- (2) Northstar 6000i WAAS chartplotter
- Furuno sounder
- Furuno autopilot system
- Clarion CD player/FM stereo – JL Audio 10 pr. speakers and 1 subwoofer
- Syrens wifi booster
- Satellite radio system
- Furuno digital depth display
- Furuno 12kW BB radar with 6.5' array
- Furuno 15" LCD monitor
- SAT TV system
- Cockpit audio from bridge stereo
- XM satellite weather system

Cockpit

- Livewell in cockpit sole

- Cockpit speakers
- Transom swim steps
- Tackle center with drawers
- Awlgrip lazarette
- Fresh and saltwater washdown
- **New** Atlantic Ice machine
- Release Marine fighting chair
- Fresh water washdown
- Sea water washdown
- Lights, indirect
- Lights in overhang, blue LED
- Recessed in salon step refrigerated chill box
- Stainless steel gas springs on fishbox lids
- Underwater lights
- (2) Additional rod holders on gunwale (total of 7)
- 24V and 110V outlets below gunwales
- Cable TV and telephone connection
- Dockside electric and water connection
- Tackle cabinet with sink and freezer, bait center
- Walk-thru transom door
- New mezzanine style cushions

Deck Equipment

- Windlass with 35' chain and 1200' line
- Freshwater washdown at bow inside anchor locker
- Fortress Danforth anchor
- Trim tab covers
- Bow pulpit
- Bow rail

Hull

- Oval exhaust outlets
- Fiberglass side thru-hulls
- Prop pockets to reduce draft
- Painted rubrail to match gelcoat

Decor

- Premier Edition Black Marlin decor
- Wrapped hatch carpet installation

- Brass door hardware
- Custom wallpaper throughout

Mechanical Equipment

- Twin Caterpillar C32, 1675 hp each
- 1200 GPD watermaker
- **NEW** pump, Sea Recovery
- Awlgrippped engine room
- Fuel filters painted Snow White
- All pumps painted Snow White
- Oil change system line to cockpit dockside box
- Power assist steering
- Dual power steering pumps on port engine
- Headhunter fresh water pump
- A/C fresh water pressurized system
- Air conditioning, zoned with reverse cycle heat
- Dockside water connection w/pressure reducing valve
- Gas/water separator for starboard generator
- Awlgrip brass thru-hulls and sea strainers in engine room and forward bilges
- "T" in dockside water inlet to fill water tank
- Shelf installed over generator
- Engine room circulating fans
- Engine room gauge package
- Fire suppression system - automatic/manual
- Fuel priming pumps
- Oil changing system, engines and generator
- Tool box
- ACR spotlight

Exclusions

Owner's personal belongings.

Disclaimer

The Company offers the details of this vessel or yacht in good faith but cannot guarantee or warrant the accuracy of this information nor warrant the condition of the vessel. A buyer should instruct his representatives, agents, or his surveyors, to investigate such details as the buyer desires validated. This vessel or yacht is offered subject to prior sale, price change, or withdrawal without notice.

PHOTOS

Salon



Salon



Salon



Salon



Salon



Dinette



Dinette



Galley



Galley



Companionway



Washer/Dryer



Master Stateroom



Master Stateroom



Master Stateroom



Master Stateroom Head



Forward Stateroom



Forward Stateroom Head



Forward Stateroom



Guest Stateroom



Guest Stateroom



Guest Stateroom Head



Cockpit



Cockpit



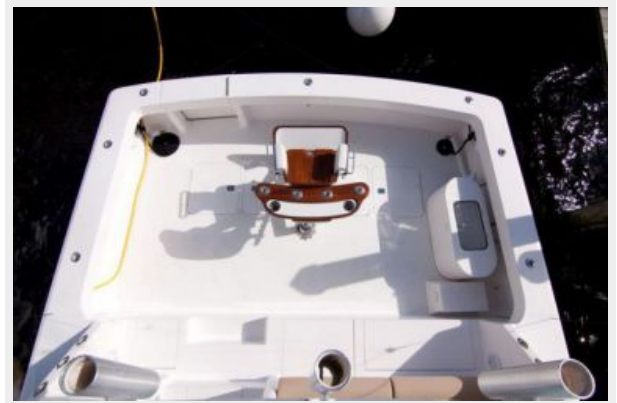
Cockpit



Cockpit



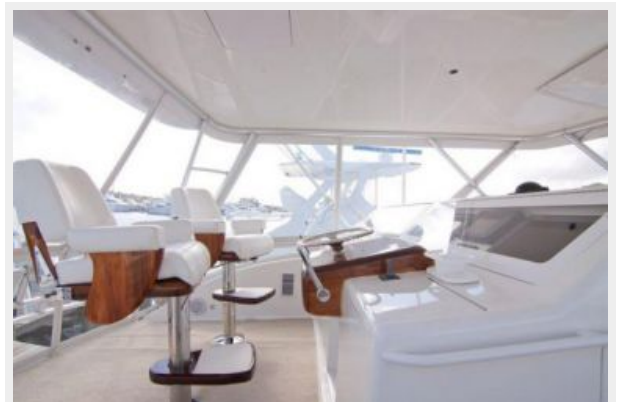
Cockpit



Flybridge



Flybridge



Flybridge



Flybridge



Flybridge



Flybridge



Flybridge



Bow



Bow



Engine Room



Engine Room



Engine Room



Engine Room



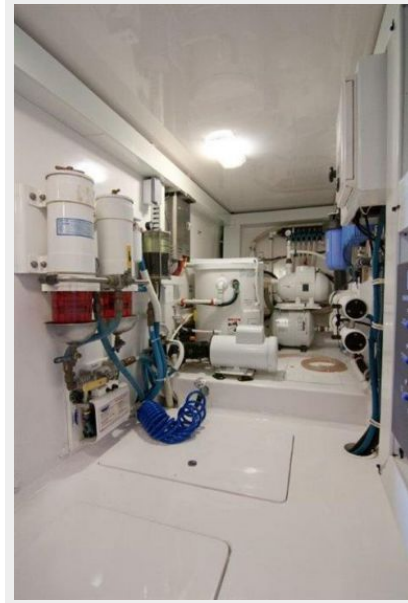
Engine Room



Engine Room



Engine Room



Engine Room



R & R



R & R



R & R



R & R



R & R



CONTACTS

Andrey Shestakov, leading yacht broker of the sales department of Shestakov Yacht Sales Inc. Shestakov Yacht Sales Inc., the official representative of the Miami/Fort Lauderdale FL headquarters.

Contact details

Email: andrey@shestakovyachtsales.com

Web: shestakovyachtsales.com/en/

Telephones

USA: +1(954)274-4435

Office hours

Monday – Saturday: **9:00 - 21:00** EDT

Sunday: **closed**

Address



Harbour Towne Marina, 850 NE 3rd St,
STE 213, Dania, FL 33004