

## R & R — VIKING



**Судостроитель:** VIKING

**Длина общая:** 61' 0" (18.59m)

**Год постройки:** 2004

**Ширина:** 18' 5" (5.61m)

**Модель:** Катер для спортивной рыбалки

**Цена:** ЦЕНА ЯХТЫ ПО ЗАПРОСУ

**Местонахождение:** United States

Купить R & R — VIKING а также выбрать подходящую вам яхту из нашего каталога яхт вам поможет опытный яхтенный брокер Андрей Шестаков. На сегодняшний день компания Shestakov Yacht Sales Inc. имеет большое количество яхт в собственном списке продаж, а также тесно сотрудничает со всеми крупными яхтенными производителями по всему миру.

Для того чтобы купить яхту R & R — VIKING а также проконсультироваться по любому вопросу связанному с покупкой, продажей, чартером яхт позвоните по телефону **+7(918)465-66-44**.

# ОГЛАВЛЕНИЕ

---

ОГЛАВЛЕНИЕ	2
ХАРАКТЕРИСТИКИ	5
Основная информация	5
Размеры	5
Скорость, вместимость и масса	5
Размещение	5
Корпус и палуба	5
Информация о двигателе	5
ПОДРОБНОЕ ОПИСАНИЕ	6
Salon	6
Galley	6
Companionway	6
Master Stateroom	7
Master Head	7
Forward Guest Stateroom	7
Forward Head	8
Starboard Guest Stateroom	8
Starboard Head	8
Flybridge	8
Flybridge Electronics	9
Cockpit	9
Deck Equipment	10
Hull	10
Decor	10
Mechanical Equipment	11
Исключения	11
Отказ от ответственности	11
ФОТОГРАФИИ	12

Salon	12
Salon	12
Salon	12
Salon	12
Dinette	12
Salon	12
Dinette	13
Galley	13
Galley	13
Companionway	13
Washer/Dryer	14
Master Stateroom	14
Master Stateroom	14
Master Stateroom	14
Master Stateroom Head	15
Forward Stateroom	15
Forward Stateroom Head	15
Forward Stateroom	15
Guest Stateroom	16
Guest Stateroom	16
Guest Stateroom Head	16
Cockpit	16
Cockpit	17
Cockpit	17
Cockpit	17
Cockpit	17
Cockpit	17
Flybridge	17
Flybridge	17
Flybridge	18

---

Flybridge	18
Flybridge	18
Flybridge	18
Flybridge	18
Bow	18
Bow	19
Engine Room	19
Engine Room	19
Engine Room	19
Engine Room	19
Engine Room	19
Engine Room	19
Engine Room	20
Engine Room	20
Engine Room	20
R & R	20
R & R	21
R & R	21
R & R	21
R & R	21
КОНТАКТЫ	22
Контактная информация	22
Телефоны	22
Время работы	22
Адрес	22

# ХАРАКТЕРИСТИКИ

## Основная информация

**Тип судна:** Катер для спортивной рыбалки

**Модельный год:** 2005

**Год постройки:** 2004

**Страна:** United States

## Размеры

**Длина общая:** 61' 0" (18.59m)

**Ширина:** 18' 5" (5.61m)

## Скорость, вместимость и масса

**Вместимость воды:** 316 Gallons

**Вместимость сточного бака:** 200 Gallons

**Объем топливного бака:** 1843 Gallons

## Размещение

**Всего кают:** 3

## Корпус и палуба

**Материал корпуса:** Fiberglass

## Информация о двигателе

**Двигатели:** 2

**Производитель:** Caterpillar

**Модель:** C32

**Тип двигателя:** Inboard

**Тип топлива:** Diesel

---

# ПОДРОБНОЕ ОПИСАНИЕ

---

## Salon

---

- New Sony Surround Sound theater system and BlueRay
- Electric panel up
- Full canvas carpet runner
- Kenmore clear icemaker
- Quartz light dimmers
- Amtico Teak & Holly flooring at salon entrance to entertainment center
- Custom wrapped fabric valences (Sensuade Latte)
- Custom 46" LED TV above dinette trimmed in Teak
- Upgraded style U-shaped sofa (Brisa Distressed Rodeo)
- Dimmers on overhead halogen lights
- Teak chart flat
- Teak dinette table with teak pedestal
- Custom covers for salon sofa
- Dinette seating w/storage

## Galley

---

- Under counter refrigerator and freezer with drawers
- Trash compactor
- Under mount stainless steel sink
- 4-burner surface mount range
- Microwave/convection oven
- Water level gauge
- Exhaust fan
- Garbage disposal
- Additional under counter refrigerator with drawers
- Amtico Teak & Holly floor
- Dimmer switches for lighting
- Custom Venetian Gold Granite countertops
- Upper cabinet storage with large pull-out drawers
- Water pump indicator

## Companionway

---

- Dimmers on overhead lighting
- Bilge storage and access
- Washer and dryer

- Carpet runner w/step covers
- Central vacuum

---

## Master Stateroom

---

- Athwartship master bed, king size w/storage below
- Custom wallpaper
- Sony stereo/DVD player entertainment surround system
- 42" HD TV
- Dimmers for overhead lighting
- Upholstered headboard
- His and her walk-in, cedar-lined closets (one converted to rod storage)
- Upgraded mattress
- End tables with Teak top surface
- Entry credenza with Teak top surface

---

## Master Head

---

- Custom Venetian Gold granite vanity top with bone sink
- Brass fixtures
- Custom wallpaper
- Teak face on lower vanity
- Exhaust fan
- Linen storage
- Medicine cabinet with mirror
- Mirror around upper vanity insert
- Amtico Teak & Holly flooring
- One-piece custom frameless shower door
- Full-size head (Magnum opus)

---

## Forward Guest Stateroom

---

- Orthopedic mattress upgrade
- Dimmer switches for lighting
- Cedar-lined hanging locker
- Stereo speakers
- VIP crossover layout
- Custom wallpaper
- 20" HD TV

---

## Forward Head

---

- Teak face on lower vanity
- Mirror around upper vanity insert
- Amtico Teak & Holly flooring
- Brass fixtures
- Exhaust fan
- Linen storage
- Custom Venetian Gold granite vanity top with bone sink
- Full-size head (Magnum Opus)
- Custom wallpaper
- Medicine cabinet with mirror

---

## Starboard Guest Stateroom

---

- Dimmer switches for lighting
- TV outlet
- Lift-up cedar-lined storage below lower berth
- Storage drawers
- Upper and lower berth arrangement
- Custom wallpaper
- Cedar-lined hanging locker
- Stereo speakers

---

## Starboard Head

---

- Amtico Teak & Holly flooring
- Mirror around upper vanity insert
- Brass fixtures
- Full-size head (Magnum Opus)
- Exhaust fan
- Linen storage
- Teak face on lower vanity
- Custom Venetian Gold granite vanity top with bone sink
- Custom wallpaper
- Medicine cabinet with mirror

---

## Flybridge

---

- Electronic trolling valves
- Custom Teak helm pod
- Recessed electronics boxes



- Storage freezer & refrigerated drink box
- Dual thermostat on freezer
- Caterpillar single lever controls
- Handrail below underside of flybridge
- Push knob catches for electronics boxes
- 110V outlet below console
- Buell horns
- Removable flybridge jumpseat backrest
- Upgraded helm chairs
- Freshwater outlet on bridge in starboard cabinet
- Upgraded drip dry foam for flybridge cushions
- Upgraded track-to-track Strataglass
- EZ2CY 4-sided enclosure
- Hardtop
- Outriggers
- Center rigger
- Rocket launcher with extra rod holders
- Air conditioning on flybridge
- New Cushions
- Carpet throughout bridge
- Bow thruster control next to pod

## Flybridge Electronics

---

- (2) Icom 602 VHF radio
- Moritz monitor
- (2) Northstar 6000i WAAS chartplotter
- Furuno sounder
- Furuno autopilot system
- Clarion CD player/FM stereo – JL Audio 10 pr. speakers and 1 subwoofer
- Syrens wifi booster
- Satellite radio system
- Furuno digital depth display
- Furuno 12kW BB radar with 6.5' array
- Furuno 15" LCD monitor
- SAT TV system
- Cockpit audio from bridge stereo
- XM satellite weather system

## Cockpit

---

- Livewell in cockpit sole

- Cockpit speakers
- Transom swim steps
- Tackle center with drawers
- Awlgrip lazarette
- Fresh and saltwater washdown
- **New** Atlantic Ice machine
- Release Marine fighting chair
- Fresh water washdown
- Sea water washdown
- Lights, indirect
- Lights in overhang, blue LED
- Recessed in salon step refrigerated chill box
- Stainless steel gas springs on fishbox lids
- Underwater lights
- (2) Additional rod holders on gunwale (total of 7)
- 24V and 110V outlets below gunwales
- Cable TV and telephone connection
- Dockside electric and water connection
- Tackle cabinet with sink and freezer, bait center
- Walk-thru transom door
- New mezzanine style cushions

---

## Deck Equipment

---

- Windlass with 35' chain and 1200' line
- Freshwater washdown at bow inside anchor locker
- Fortress Danforth anchor
- Trim tab covers
- Bow pulpit
- Bow rail

---

## Hull

---

- Oval exhaust outlets
- Fiberglass side thru-hulls
- Prop pockets to reduce draft
- Painted rubrail to match gelcoat

---

## Decor

---

- Premier Edition Black Marlin decor
- Wrapped hatch carpet installation

- Brass door hardware
- Custom wallpaper throughout

## Mechanical Equipment

---

- Twin Caterpillar C32, 1675 hp each
- 1200 GPD watermaker
- **NEW** pump, Sea Recovery
- Awlgrippped engine room
- Fuel filters painted Snow White
- All pumps painted Snow White
- Oil change system line to cockpit dockside box
- Power assist steering
- Dual power steering pumps on port engine
- Headhunter fresh water pump
- A/C fresh water pressurized system
- Air conditioning, zoned with reverse cycle heat
- Dockside water connection w/pressure reducing valve
- Gas/water separator for starboard generator
- Awlgrip brass thru-hulls and sea strainers in engine room and forward bilges
- "T" in dockside water inlet to fill water tank
- Shelf installed over generator
- Engine room circulating fans
- Engine room gauge package
- Fire suppression system - automatic/manual
- Fuel priming pumps
- Oil changing system, engines and generator
- Tool box
- ACR spotlight

## Исключения

---

При продаже яхты исключаются личные вещи владельца.

## Отказ от ответственности

---

Компания предоставляет описание судна или яхты добросовестно, но не может гарантировать точность этой информации, а также не ручается за техническое состояние. Покупатель должен проинструктировать своих агентов или оценщиков исследовать представленную информацию более подробно, по собственному желанию. Продажа судна или яхты, изменение цены или снятие с продажи будет происходить без предварительного уведомления.

# ФОТОГРАФИИ

Salon



Salon



Salon



Salon



Salon



Dinette



**Dinette**



**Galley**



**Galley**



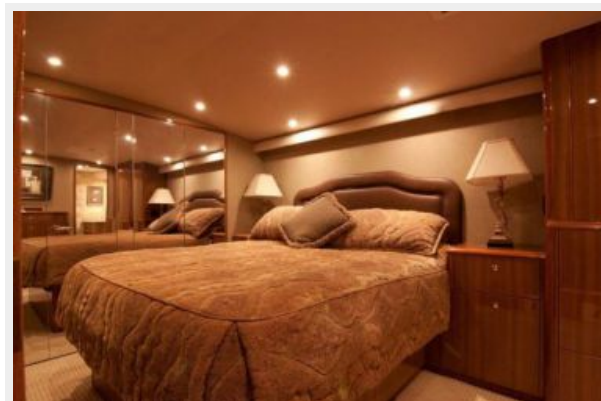
**Companionway**



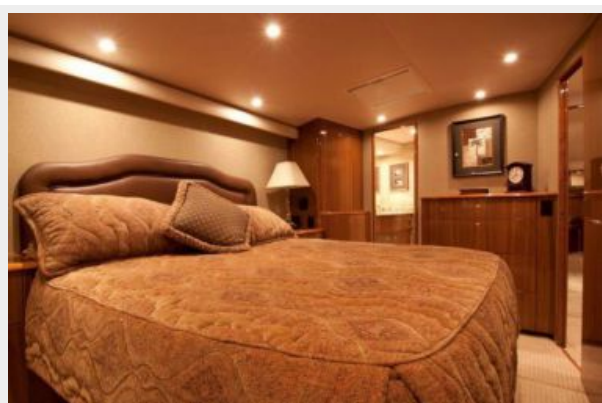
**Washer/Dryer**



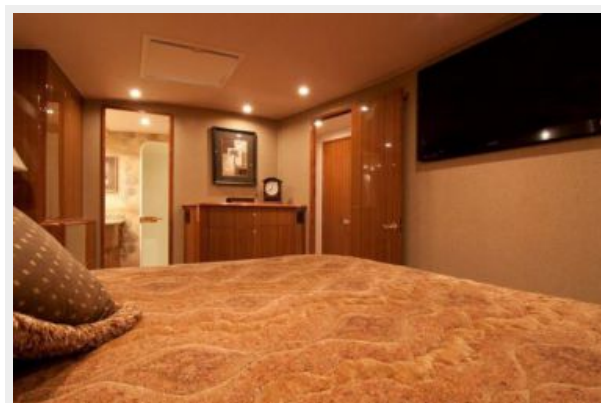
**Master Stateroom**



**Master Stateroom**



**Master Stateroom**



**Master Stateroom Head**



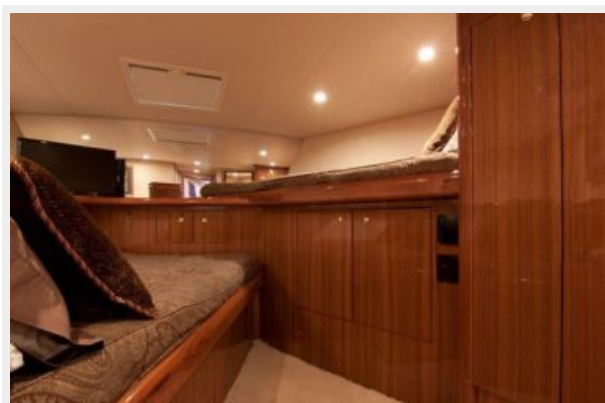
**Forward Stateroom**



**Forward Stateroom Head**



**Forward Stateroom**



**Guest Stateroom**



**Guest Stateroom**



**Guest Stateroom Head**



**Cockpit**





**Сокпит**



**Сокпит**



**Сокпит**



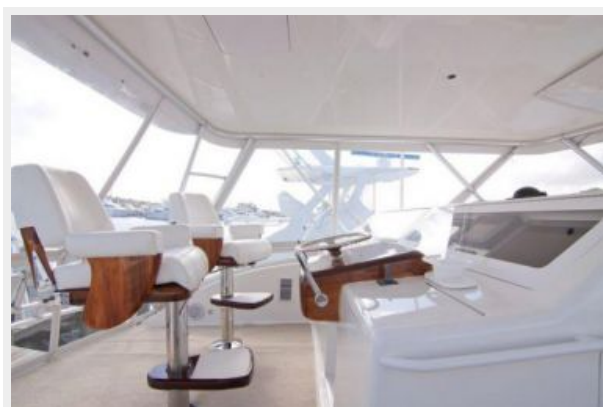
**Сокпит**



**Flybridge**



**Flybridge**



**Flybridge**



**Flybridge**



**Flybridge**



**Flybridge**



**Flybridge**



**Bow**



**Bow**



**Engine Room**



**Engine Room**



**Engine Room**



**Engine Room**



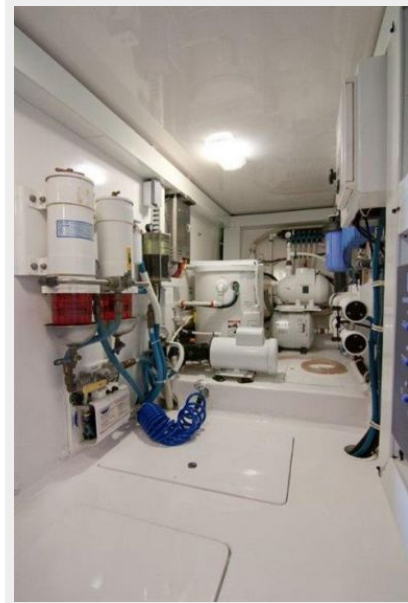
**Engine Room**



**Engine Room**



**Engine Room**



**Engine Room**



**R & R**



R & R



R & R



R & R



R & R



# КОНТАКТЫ

---

Андрей Шестаков (Andrey Shestakov) – ведущий яхтенный брокер отдела продаж яхт и судов компании Shestakov Yacht Sales Inc. Официальный представитель Shestakov Yacht Sales Inc. для русскоговорящих клиентов в центральном офисе компании в Майами/Форт Лодердейл/Флорида/США.

## Контактная информация

---

Email: [andrey@shestakovyachtsales.com](mailto:andrey@shestakovyachtsales.com)

Web: [shestakovyachtsales.com](http://shestakovyachtsales.com)

## Телефоны

---

Краснодарский край: **+7(918)465-66-44**

США, Майами, Флорида: **+1(954)274-4435**

## Время работы

---

Понедельник – Суббота: **9:00 - 21:00**  
EDT

Воскресенье: **Закрето**

## Адрес

---



Harbour Towne Marina, 850 NE 3rd St,  
STE 213, Dania, FL 33004