

FAVORITE MISTAKE — SEA RAY



Судостроитель: SEA RAY

Год постройки: 2000

Модель: Моторная яхта

Цена: **ЦЕНА ЯХТЫ ПО ЗАПРОСУ**

Местонахождение: United States

Длина общая: 46' 0" (14.02m)

Ширина: 14' 8" (4.47m)

Макс. осадка: 3' 7" (1.09m)

Крейс. скорость: 21 Kts. (24 MPH)

Макс. скорость: 26 Kts. (30 MPH)

Купить Favorite Mistake — SEA RAY а также выбрать подходящую вам яхту из нашего каталога яхт вам поможет опытный яхтенный брокер Андрей Шестаков. На сегодняшний день компания Shestakov Yacht Sales Inc. имеет большое количество яхт в собственном списке продаж, а также тесно сотрудничает со всеми крупными яхтенными производителями по всему миру.

Для того чтобы купить яхту Favorite Mistake — SEA RAY а также проконсультироваться по любому вопросу связанному с покупкой, продажей, чартером яхт позвоните по телефону **+7(918)465-66-44**.

ОГЛАВЛЕНИЕ

ОГЛАВЛЕНИЕ	2
ХАРАКТЕРИСТИКИ	4
Основная информация	4
Размеры	4
Скорость, вместимость и масса	4
Размещение	4
Корпус и палуба	4
Информация о двигателе	5
ПОДРОБНОЕ ОПИСАНИЕ	6
Accommodations	6
Исключения	9
Отказ от ответственности	10
ФОТОГРАФИИ	11
Salon	11
Galley	11
Master Stateroom	11
Master Head	11
Master Shower	12
Guest Berth	12
Guest Stateroom Starboard	12
Guest Stateroom	12
Guest Head	13
Guest Stateroom Washer Dryer	13
Cockpit Aft	13
Cockpit Forward	13
Stern	13
Bimini Redesign Forward	13
Helm Deck Ice-Maker	14

Starboard View	14
Bow	14
Deck Looking Aft	14
Starboard Deck	14
Port Deck	14
Swim Platform	15
New Garmin Plotter	15
Helm	15
Helm	15
Helm Chair	15
Engine Room Generator	15
Cable Master	16
Starboard Engine	16
Port Engine	16
Engine Room Forward	16
Engine Room Starboard	17
Racor Filters	17
Starboard Profile	17
Stern Side to	17
Port Profile	17
КОНТАКТЫ	18
Контактная информация	18
Телефоны	18
Время работы	18
Адрес	18

ХАРАКТЕРИСТИКИ

Основная информация

Тип судна: Моторная яхта

Модельный год: 2000

Год постройки: 2000

Страна: United States

Размеры

Длина общая: 46' 0" (14.02m)

Длина по ватерлинии: 45' 6" (13.87m)

Ширина: 14' 8" (4.47m)

Макс. осадка: 3' 7" (1.09m)

Скорость, вместимость и масса

Крейс. скорость: 21 Kts. (24 MPH)

Макс. скорость: 26 Kts. (30 MPH)

Водоизмещение: 28000 Pounds

Вместимость воды: 100 Gallons

Вместимость сточного бака: 60 Gallons

Объем топливного бака: 400 Gallons

Размещение

Всего кают: 2

Корпус и палуба

Материал корпуса: Fiberglass

Информация о двигателе

Двигатели: 2

Производитель: Cummins

Модель: 6СТА

Тип двигателя: Inboard

Тип топлива: Diesel

ПОДРОБНОЕ ОПИСАНИЕ

Accommodations

The master stateroom is forward with a NEW custom mattress, STBD hanging locker, drawers under berth and shelved cabinet with door on Port. The master head has a door en suite as well as from the salon. It features a separate stall shower.

Salon is aft of master STRM with large settee that converts to double berth and a recliner chair. The galley area is combined with salon and has a NEW Samsung HDTV and SAT system. The wood cabinets are cherry and are in excellent condition.

The guest head and stateroom are aft with a settee that electrically converts to a double berth and built-in combination washer/dryer.

Throughout are drapes, cherry cabinetry, carpet, central vacuum and stereo speakers.

Galley

- Kenyon 3 burner electric counter top
- Easy care fiberglass counters and molded sink
- Norcold refrigerator/freezer
- Black & Decker Space Maker coffee maker
- Sink sprayer
- Cherry cabinetry with lots of storage

Salon

- Settee that converts to double berth
- Smaller settee that converts to reclining chair
- Carpet
- Cherry end table with storage
- Cherry over head storage cabinets
- Port windows with drapes

Guest Cabin

- Pocket door closes for privacy. With door open it becomes an expanded part of the salon
- Settee that electrically converts to double berth
- Mirrors
- Separate guest/day head w/ Vacuflush toilet and vanity/sink/shower
- Cherry storage cabinets
- Combo washer/dryer
- Carpet

Master Stateroom

- NEW custom mattress, bedding and sheets for queen island berth
- Cherry overhead cabinets
- Cherry faced drawers
- Cherry doored hanging locker
- Cherry doored shelved/ storage cabinet
- Carpet
- Port windows with drapes

Electrical

- (3) batteries in boxes, covered and secured
- (2) battery switches
- Promariner Pro Tech 1220 12 v / 20 amp battery charger
- Xantrex 12 v / 40 amp battery charger
- Circuit breaker box in salon and additional breakers at helm station
- Westerbeke generator, 8 kw – around 750 hours
- 50 amp dockside shorepower plug w/ cord
- Glendinning Cable Master
- Emergency start system
- Bow thruster battery
- (2) Marineair air-conditioning units, (1) NEW

Engine Room

- Twin Cummins 6CTA engines with approximately 800 hours
- ZF transmissions
- Racor fuel filters
- Twin bronze 4 blade props
- Oil change pump
- Airseps on main engines
- Water heater – Atwood 8.5 gallons
- (2) engine room blowers
- (3) bilge pumps
- (1) shower sump pump
- Stainless steel shaft 2”
- Drip-less shaft logs
- Throttle & clutch controls, Morse Cable
- Stainless steel risers
- Sea-Fire G500A Halon 1301 fixed fire equipment

Electronics

- NEW Garmin 7212 touch screen chart plotter w/ 2nd depth sounder
- NEW ICOM M504 VHF radio

- NEW Raymarine Tri-Data (depth, speed, log)
- Raymarine ST802 autopilot
- Glendinning synchronizer for engines
- Bennett trim tabs
- ACR spotlight with RCL-100 Point Pad
- 4" Ritchie compass
- Dual trumpet electric/air horn
- Side Power bow thruster control
- Fuel tank gauges
- Anchor windlass control
- Sea Ray Systems Monitor

Entertainment Electronics

- 31" Samsung HDTV
- Clarion M5355 AM/FM/CD
- Clarion M635 CD player
- Speakers – (4) in cockpit, (2) salon, (2) master cabin
- Clarion CMD6 AM/FM/CD/Sirius stereo at helm station
- Sub-Woofer in cockpit

Deck

- NEW painted non-skid cockpit, swim platform, side and fore deck with Awlgrip "Moondust"
- Running lights
- Stern Lights
- Anchor lights
- Fresh water washdowns
- NEW helm deck ice-maker
- Forward deck sun pad
- Power windshield vent
- Radar arch
- Helm deck wet bar w/sink and ice-maker cabinets
- (2) windshield wipers
- Helm deck settee next to captain chair with flip-up bolster

Cockpit

- Large curved settee forward
- Aft cockpit bench seat converts electrically to sun pad
- (1) dining table – movable
- Transom shower – hot/cold water
- Transom door
- Swim ladder
- Transom storage locker with Cablemaster control

- Dockside city water connection

Canvas - All New

- NEW Bimini with forward area redesigned for additional head room and better visibility
- NEW Sun Shade – Removable
- NEW cockpit storage cover with access zippered opening
- NEW helm cover

Broker Comments

Favorite Mistake is nicely equipped and well cared for. She's turn key and ready to cruise and enjoy. Her current owner has upgraded and updated many items during his ownership. Among those completed in 2014 are:

- NEW canvas Bimini top and enclosure that have been redesigned to provide much more headroom and excellent visibility at the helm than the standard arrangement.
- NEW Isenglass enclosure
- NEW cockpit Sun Shade. The Sun Shade attaches to the radar arch and shades entire cockpit. Easy to attach and remove
- NEW cockpit storage cover with zippered opening for easy boarding
- NEW non-skid painted decks and swim platform with Awlgrip "Moondust". See detail photos. Made boat look years newer and compliments the new canvas
- NEW cockpit ice-maker
- NEW anchor and full chain rode
- NEW master berth Custom Mattress (Handcraft)
- NEW bedding and sheets
- NEW salon Marineair air-conditioner
- NEW 31" SAMSUNG HDTV – flat screen
- NEW KVH SAT TV Trac Vision M3
- NEW ICOM M504 VHF radio
- NEW Raymarine Tri-Data (depth, speed, log)
- NEW Garmin 7212 touch screen chart plotter with 2nd depth sounder
- NEW bottom paint 5/14
- Compound, buff and wax 11/14
- Recent full service on mains, transmission and generator

Favorite Mistake is truly one of a kind Sundancer. She shows like a much newer boat and is ready for her new owner. Current owner is selling due to change in plans.

Исключения

При продаже яхты исключаются личные вещи владельца.

Отказ от ответственности

Компания предоставляет описание судна или яхты добросовестно, но не может гарантировать точность этой информации, а также не ручается за техническое состояние. Покупатель должен проинструктировать своих агентов или оценщиков исследовать представленную информацию более подробно, по собственному желанию. Продажа судна или яхты, изменение цены или снятие с продажи будет происходить без предварительного уведомления.

ФОТОГРАФИИ

Salon



Galley



Master Stateroom



Master Head



Master Shower



Guest Berth



Guest Stateroom Starboard



Guest Stateroom



Guest Head



Guest Stateroom Washer Dryer



Cockpit Aft



Cockpit Forward



Stern



Bimini Redesign Forward



Helm Deck Ice-Maker



Starboard View



Bow



Deck Looking Aft



Starboard Deck



Port Deck



Swim Platform



New Garmin Plotter



Helm



Helm



Helm Chair



Engine Room Generator



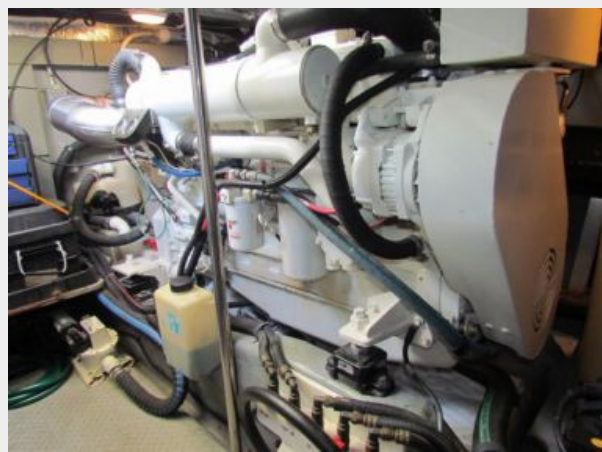
Cable Master



Starboard Engine



Port Engine



Engine Room Forward



Engine Room Starboard

Racor Filters



Starboard Profile



Stern Side to



Port Profile



КОНТАКТЫ

Андрей Шестаков (Andrey Shestakov) – ведущий яхтенный брокер отдела продаж яхт и судов компании Shestakov Yacht Sales Inc. Официальный представитель Shestakov Yacht Sales Inc. для русскоговорящих клиентов в центральном офисе компании в Майами/Форт Лодердейл/Флорида/США.

Контактная информация

Email: andrey@shestakovyachtsales.com

Web: shestakovyachtsales.com

Телефоны

Краснодарский край: **+7(918)465-66-44**

США, Майами, Флорида: **+1(954)274-4435**

Время работы

Понедельник – Суббота: **9:00 - 21:00**
EDT

Воскресенье: **Закрето**

Адрес



Harbour Towne Marina, 850 NE 3rd St,
STE 213, Dania, FL 33004