

## GAME 7 — FERRETTI



**Builder:** FERRETTI

**Year Built:** 2009

**Model:** Motor Yacht

**Price:** PRICE ON APPLICATION

**Location:** United States

**LOA:** 78' 0" (23.77m)

**Beam:** 19' 6" (5.94m)

**Max Draft:** 6' 1" (1.85m)

Our experienced yacht broker, Andrey Shestakov, will help you choose and buy a yacht that best suits your needs **Game 7 — FERRETTI** from our catalogue. Presently, at Shestakov Yacht Sales Inc., we have a wide variety of yachts available on our sale's list. We also work in close contact with all the big yacht manufacturers from all over the world.

If you would like to buy a yacht **Game 7 — FERRETTI** or would like help answering any questions concerning purchasing, selling or chartering a yacht, please call **+1(954)274-4435**

---

# TABLE OF CONTENTS

---

TABLE OF CONTENTS	2
SPECIFICATIONS	3
Basic Information	3
Dimensions	3
Speed, Capacities and Weight	3
Accommodations	3
Hull and Deck Information	3
Engine Information	3
DETAILED INFORMATION	4
Vessel Description	4
Exclusions	5
Disclaimer	5
PHOTOS	6
CONTACTS	16
Contact details	16
Telephones	16
Office hours	16
Address	16

---

# SPECIFICATIONS

---

## Basic Information

---

**Category:** Motor Yacht

**Model Year:** 2009

**Year Built:** 2009

**Country:** United States

## Dimensions

---

**LOA:** 78' 0" (23.77m)

**Beam:** 19' 6" (5.94m)

**Max Draft:** 6' 1" (1.85m)

## Speed, Capacities and Weight

---

**Water Capacity:** 349 Gallons

**Fuel Capacity:** 1559 Gallons

## Accommodations

---

**Total Cabins:** 4

**Total Heads:** 4

## Hull and Deck Information

---

**Hull Material:** Fiberglass

## Engine Information

---

**Manufacturer:** MTU

**Model:** V12 2000

**Engine Type:** Inboard

**Fuel Type:** Diesel

# DETAILED INFORMATION

## Vessel Description

**Game 7** is a very clean and well maintained 780 Ferretti offering the best engineering along with the finest Italian design. The current owner has added several new features including but not limited to all new Garmin touch screen electronics and a new hard bottom tender with 4 stroke Yamaha power. **Game 7** has been used by her current owner (2nd owner) and captained by crew of the highest quality. She represents one of only a few late model vessels in this range and age.

**Vessel Walkthrough** The spacious and open aft deck provides seating for 8 around a beautiful custom teak table. The entry of the boat is signature Ferretti. The aft deck window opens to the salon creating a large, open and spacious feel. The salon comfortably seats 9 and features a center leather coffee table with bottle storage inside. Forward is the fully equipped, enclosed galley. The lower helm area provides seating on the port side and a breakfast nook for owner or crew complete with a retractable small table. To the port is the lower helm that fully controls and operates the vessel. Forward are 4 well-appointed staterooms, lavishly and expertly equipped for the safety and enjoyment of all guests. **Game 7** is truly a well-kept vessel maintained by an experienced, mature Captain.

**Flybridge** Custom table with seating for 8 Portside operated controls with retractable helm station for weather protection Retractable Besenzoni Sun Roof Aft deck overhang Wind screen Stainless steel railings Sun deck on the foredeck area with two (2) removable sunpads Sink Isotherm refrigerator Freezer Ice maker Electric Grill with safety shutoff switch Bench companion seating Garmin 7215 GPP color touch screen chart plotter/radar/bottom screen Fusion MSIP 600 entertainment center with JBL speakers DP-30 Simrad Remote Ap-24 Auto Pilot ITT Jabsco spot light with auto control Simrad RS-82 VHF with ext speaker IS-20 Depth and Speed Log ZF electronic controls

**Engine Room** ZF controls and transmissions Reverso oil change system Dripless shaft seals 5X Mastervolt chargers

**Engine Hours** Current Engine hours are 1,120 on the Starboard the Port reads 85 (the computer control board was changed but true hours are similar 1,260 + or - to starboard and reflected with the log). Generator hours are 950 on Port (the computer control board was changed but true hours are similar 2,260 + or - to starboard and reflected with the log) and 2261 on the Starboard generator.

**Safety Equipment** Life Jackets Fire extinguishers and extinguishing system in the engine room Flare kit (2) two life rafts Smoke detectors and fire alarms throughout the vessel Search lights High bilge water alarms Dual stainless steel anchor and dual electric windless Besenzoni Davit AB 12' hard bottom inflatable tender with a 40hp four stroke Yamaha engine and a Standard Horizon VHF

**Aft Deck** Large and spacious for entertaining guests Teak deck overlay with port and starboard access to the side decks Port and Starboard boarding side door Built in sink and water spigot and line storage compartment Built in bench seat, ice box and engine room entrance Teak table with 4 folding chairs

**Dining/Salon Area** This is the "signature" area the only Ferretti can perfect. The area is both spacious and beautiful with wood interior finishes and an innovative design. The dining area is located 2 steps up forward of the salon area with teak storage and cabinetry, a very luxurious glass dining table with end extensions, 8 dining chairs and a Raritan Ice Maker. The area also has complete digital Marine air system, an Isotherm drink cooler and a 37" Aquis color TV with Bose Surround Sound.

**Lower Helm** The helm station has full instruments and

controls and is located on the port side with a Besenzoni electric helm seat and fixed companion seat Simrad GPS/Plotter/Radar Simrad AP-28 Auto pilot Simrad IS-20 Speed log and depth Quick chain counter ITT Jabsco spot light Side power bow thruster Ferretti Naviop system Barigo Thermometer, clock, Barometer Simerad RD-82 VHF ZF electronic controls Opposite of the helm is an L-shaped leather settee with hideaway wood table **Galley** The galley is located forward of the dining room to the port side and has an electric operated side entrance to the port deck, privacy doors and a complete Marine air digital system. This area comes complete with Kenmore Elite side by side refrigerator/freezer with ice and cold water dispenser, Bosch 4 burner electric stove with a GE Monogram series convection oven, dishwasher and a dual stainless steel sink with disposal. **Master Stateroom** The master is a full beam quarters located midship with more than enough room for two adults on a queen size bed. There are spacious drawers below the bed, night tables and to port a leather lounge seat. The quarters includes a lighted walk in closet with a chest of drawers, owner's safe, 37" Aquis TV with Bose surround sound, Sat TV, AM/FM/DVD entertainment center and an full enclosed head with Marine Air with digital controls. **VIP Guest Stateroom** This berth is located in the forward part of the boat and provides sleeping for two adults on an island queen bed with side storage, 2 lighted hanging lockers and 2 linen lockers. An entertainment area includes a 27" Aquis Sharp TV with Bose surround sound, SAT TV, AM/FM/DVD/Disc player and Marine digital air control system. **Guest Stateroom Port** The guest port stateroom provides sleeping for two adults on two twin bunks with under storage, 1 lighted hanging locker and 1 night table. An entertainment area includes a Sharp TV 17", SAT TV, AM/FM/DVD/Disc player and Marine digital air control system and full enclosed head and shower. **Guest Stateroom Starboard** The guest starboard stateroom provides sleeping for two adults on two twin bunks with under storage, 1 lighted hanging locker and 1 night table. An entertainment area includes a Sharp TV 17", SAT TV, AM/FM/DVD/Disc player, Marine digital air control system and a fully enclosed head and shower.

---

## Exclusions

Owner's personal belongings.

---

## Disclaimer

The Company offers the details of this vessel or yacht in good faith but cannot guarantee or warrant the accuracy of this information nor warrant the condition of the vessel. A buyer should instruct his representatives, agents, or his surveyors, to investigate such details as the buyer desires validated. This vessel or yacht is offered subject to prior sale, price change, or withdrawal without notice.

# PHOTOS













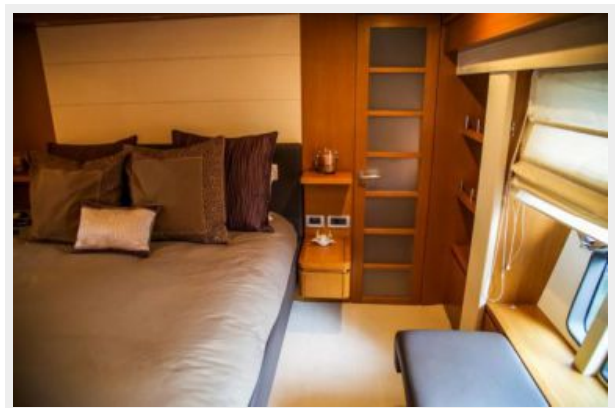
















# CONTACTS

---

Andrey Shestakov, leading yacht broker of the sales department of Shestakov Yacht Sales Inc. Shestakov Yacht Sales Inc., the official representative of the Miami/Fort Lauderdale FL headquarters.

## Contact details

---

Email: [andrey@shestakovyachtsales.com](mailto:andrey@shestakovyachtsales.com)

Web: [shestakovyachtsales.com/en/](http://shestakovyachtsales.com/en/)

## Telephones

---

USA: +1(954)274-4435

## Office hours

---

Monday – Saturday: **9:00 - 21:00** EDT

Sunday: **closed**

## Address

---



Harbour Towne Marina, 850 NE 3rd St,  
STE 213, Dania, FL 33004