

FOURTUNATE — SEA RAY



Судостроитель: SEA RAY

Длина общая: 40' 0" (12.19m)

Год постройки: 2006

Модель: Моторная яхта

Цена: ЦЕНА ЯХТЫ ПО ЗАПРОСУ

Местонахождение: United States

Купить **Fourtunate — SEA RAY** а также выбрать подходящую вам яхту из нашего каталога яхт вам поможет опытный яхтенный брокер Андрей Шестаков. На сегодняшний день компания **Shestakov Yacht Sales Inc.** имеет большое количество яхт в собственном списке продаж, а также тесно сотрудничает со всеми крупными яхтенными производителями по всему миру.

Для того чтобы купить яхту **Fourtunate — SEA RAY** а также проконсультироваться по любому вопросу связанному с покупкой, продажей, чартером яхт позвоните по телефону **+7(918)465-66-44**.

ОГЛАВЛЕНИЕ

| | |
|--------------------------|----|
| ОГЛАВЛЕНИЕ | 2 |
| ХАРАКТЕРИСТИКИ | 4 |
| Обзор | 4 |
| Основная информация | 4 |
| Размеры | 4 |
| Размещение | 4 |
| Корпус и палуба | 4 |
| Информация о двигателе | 5 |
| ПОДРОБНОЕ ОПИСАНИЕ | 6 |
| Vessel Walkthrough | 6 |
| Salon | 6 |
| Galley | 6 |
| Master Stateroom | 7 |
| Guest Stateroom | 7 |
| Helm | 8 |
| Electonics | 8 |
| Electrical System | 8 |
| Mechanical Equipment | 8 |
| Engine Room | 9 |
| Aft Deck | 9 |
| Исключения | 9 |
| Отказ от ответственности | 9 |
| ФОТОГРАФИИ | 11 |
| Salon | 11 |
| Salon | 11 |
| Salon TV | 11 |
| Master Stateroom | 11 |
| Forward Stateroom | 11 |

| | |
|-----------------------|----|
| Helm and Electronics | 11 |
| Aft Deck Seating | 12 |
| Enclosure | 12 |
| Running Profile | 12 |
| Underwater Lights | 12 |
| КОНТАКТЫ | 13 |
| Контактная информация | 13 |
| Телефоны | 13 |
| Время работы | 13 |
| Адрес | 13 |

ХАРАКТЕРИСТИКИ

Обзор

This 2006 Sea Ray 40 Motor Yacht Owned by and Interior Designer and it shows!!!!

Distinctive hardtop motor yacht blends traditional flushdeck design with sleek styling, maxi-volume interior. Upscale interior with cherry cabinets boasts expansive salon with facing settees, well-appointed staterooms. Galley enjoys good natural lighting from window above. Washer/Dryer located under the Galley steps. Flushdeck layout keeps the skipper with guest rather than isolated on the flybridge.

"Fourtunate" has received Regular Service and has had a Recent Bottom Paint and Boot Strip Painted.

Основная информация

Тип судна: Моторная яхта

Подкатегория: Aft Cabin

Модельный год: 2006

Год постройки: 2006

Страна: United States

Размеры

Длина общая: 40' 0" (12.19m)

Размещение

Всего кают: 2

Всего ком. состава: 2

Корпус и палуба

Материал корпуса: Fiberglass

Информация о двигателе

Двигатели: 2

Производитель: Cummins

Модель: 6СТА 8.3

Тип двигателя: Inboard

Тип топлива: Diesel

ПОДРОБНОЕ ОПИСАНИЕ

Vessel Walkthrough

One of the most impressive features of the 40 Motor Yacht is the helm and aft deck area, this area is one level with a 360° view, fully enclosed and air conditioned for entertaining or comfortable cruising. The aft deck features a wet bar with refrigerator and TV, There are two acrylic entry doors and a curves stair leading to the swim platform.

Access to the open and airy salon is down the companionway stairs, the salon features rich Cherry woods with a large ultra leather settee to starboard that converts to a comfortable double berth. There is also a full entertainment center aft and an adjustable hi-lo table and breakfast bar.

The forward stateroom features a V berth arrangement with the starboard side converting to a double berth. It features rich cherry woodwork, TV, abundant storage and private access to the guest head with a stall shower, vanity with good storage and a fresh water Vacu-flush head.

The master stateroom is aft and features the same rich cherry wood trim, a queen sized island berth, built in vanity and abundant storage. The in-suite head features the popular split head and shower arrangement with sink and vanity located between. A flat screen television and storage cabinets are located on the forward bulkhead.

Salon

The salon's curved sofa seats a crowd at party or dinner time, and sleeps two in comfort overnight, when converted to a bed.

- Rich cherry wood trim
- Convertible ultra-leather sofa
- Hi-lo table
- 40" Samsung LED TV
- Clarion entertainment system
- Central vac system
- Chart storage
- Carpet runners
- Window treatments
- Cruisair A/C control
- Electrical switch panel
- Dedicated storage

Galley

The inviting galley with breakfast bar will make you feel right at home. Conveniences include a solid-surface counter-top, microwave/convection oven, refrigerator/freezer, recessed two-burner stove.

- Breakfast bar
- Counter-top - Solid Surface
- Handrails
- Microwave/Convection Oven
- 2 Burner Stove Top
- Power Vent - 12V
- Refrigerator/Freezer - 110V
- Storage - Under Steps
- Storage - Upper and Lower
- Stove - 120V
- Trash Receptacle
- Washer/Dryer

Master Stateroom

In the aft master stateroom, a queen size bed with innerspring mattress has storage underneath. There's also a built-in nightstand. Additional storage is available in the dresser drawer unit and in the full locker with shelves.

- Rich cherry wood trim
- Queen island berth with storage below
- En-suite split head and shower arrangement
- Vacu-flush toilet
- Vanity with sink and storage
- Full length cedar lined hanging locker
- Nightstand
- Dresser with mirror
- Samsung flat screen TV
- Cruisair AC controls

Guest Stateroom

Guest in the forward stateroom can enjoy two twin beds or use the filler cushions to convert the starboard bed to a full-size bed. This stateroom also has a privacy door, a built-in nightstand, a full hanging locker, gunwale cabinets, and in-floor storage

Helm

The helm area features a New Samsung flat screen TV, standard SmartCraft™ Instrumentation and System View for operating ease. The captain will appreciate the incredible view from the heavy-duty pedestal helm seat and slide.

Electronics

- 2 Ray Marine E120 12" Color Display
- GPS Chart Plotter
- Radar 4KW -72 Miles
- ST-7006 Auto Pilot Interfaced
- DSM 300 Fishfinder
- Ray 240 VHF Radio with 8" Antenna
- SAT TV System

Electrical System

- 9KW Onan Generator with 894 Hours
- Batteries-(4)
- Battery charger/Converter
- Panel, Circuit Breaker
- Panel, DC Main Breaker
- Panel, Main Distribution-AC
- Panel, Main Distribution-DC
- Cable Master
- Shore Power
- Transformers
- TV/Phone Inlet
- Wiring, Color Coded
- Under Water Lights
- LED Accent Lights

Mechanical Equipment

Water System

- Freshwater hose and spigot
- Freshwater washdown spigot
- Manifold system
- Pressure water system

- Shower, cockpit
- Water heater - 11 gallons
- Water inlet - dockside
- Water tank - 100 gallons

Waste System

- Head system - Vacu- flush
- Holding tank - 54 gallons
- Holding tank level indicators
- Sump box

Engine Room

- Bilge pump - 12V automatic -2
- Bilge pump - 12V automatic high water
- Blowers - 12V bilge -2
- Engine -drip sumps
- Exhaust - underwater- patented
- Fire suppression system
- Gel-coated engine room
- Insulation-engine room
- Ladder
- Lighting -12V
- Oil changer system

Aft Deck

In the large cockpit, entertaining is a breeze with abundant seating, wet bar with sink, five stainless steel beverage holders, icemaker, and trash receptacle. There's also easy access to the cabin and aft deck. Canvas and Isinglass recently replaced.

Исключения

При продаже яхты исключаются личные вещи владельца.

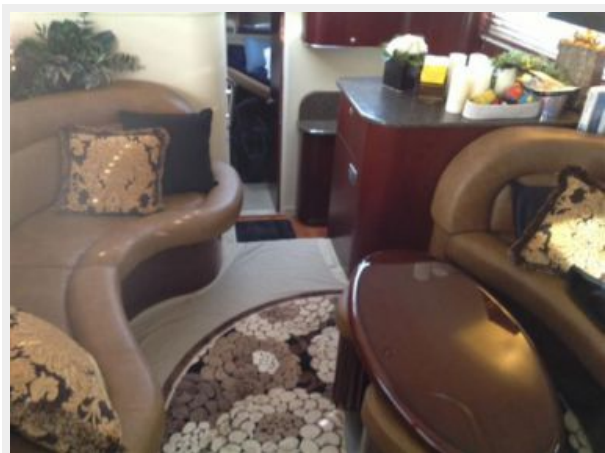
Отказ от ответственности

Компания предоставляет описание судна или яхты добросовестно, но не может гарантировать точность этой информации, а также не ручается за техническое состояние. Покупатель должен проинструктировать своих агентов или оценщиков

исследовать представленную информацию более подробно, по собственному желанию. Продажа судна или яхты, изменение цены или снятие с продажи будет происходить без предварительного уведомления.

ФОТОГРАФИИ

Salon



Salon



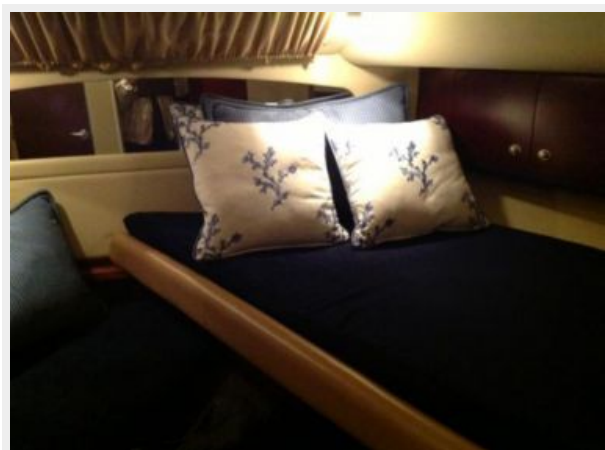
Salon TV



Master Stateroom



Forward Stateroom



Helm and Electronics



Aft Deck Seating



Enclosure



Underwater Lights



Running Profile



КОНТАКТЫ

Андрей Шестаков (Andrey Shestakov) – ведущий яхтенный брокер отдела продаж яхт и судов компании Shestakov Yacht Sales Inc. Официальный представитель Shestakov Yacht Sales Inc. для русскоговорящих клиентов в центральном офисе компании в Майами/Форт Лодердейл/Флорида/США.

Контактная информация

Email: andrey@shestakovyachtsales.com

Web: shestakovyachtsales.com

Телефоны

Краснодарский край: **+7(918)465-66-44**

США, Майами, Флорида: **+1(954)274-4435**

Время работы

Понедельник – Суббота: **9:00 - 21:00**
EDT

Воскресенье: **Закрето**

Адрес



Harbour Towne Marina, 850 NE 3rd St,
STE 213, Dania, FL 33004