

## 85E08 — OCEAN ALEXANDER



**Судостроитель:** OCEAN ALEXANDER

**Год постройки:** 2015

**Модель:** Моторная яхта

**Цена:** **ЦЕНА ЯХТЫ ПО ЗАПРОСУ**

**Местонахождение:** United States

**Длина общая:** 85' 9" (26.14m)

**Ширина:** 20' 1" (6.12m)

**Мин. осадка:** 5' 4" (1.63m)

**Макс. осадка:** 5' 11" (1.80m)

Купить 85E08 — OCEAN ALEXANDER а также выбрать подходящую вам яхту из нашего каталога яхт вам поможет опытный яхтенный брокер Андрей Шестаков. На сегодняшний день компания Shestakov Yacht Sales Inc. имеет большое количество яхт в собственном списке продаж, а также тесно сотрудничает со всеми крупными яхтенными производителями по всему миру.

Для того чтобы купить яхту 85E08 — OCEAN ALEXANDER а также проконсультироваться по любому вопросу связанному с покупкой, продажей, чартером яхт позвоните по телефону **+7(918)465-66-44**.

# ОГЛАВЛЕНИЕ

---

ОГЛАВЛЕНИЕ	2
ХАРАКТЕРИСТИКИ	5
Основная информация	5
Размеры	5
Скорость, вместимость и масса	5
Размещение	5
Корпус и палуба	5
Информация о двигателе	6
ПОДРОБНОЕ ОПИСАНИЕ	7
Accommodations, Interior / Audio, Video	7
Construction	11
Mechanical	12
Plumbing	14
Electrical	15
Исключения	18
Отказ от ответственности	18
ФОТОГРАФИИ	19
Aft Deck	19
85E08	19
Aft Deck	19
Aft Deck	19
Side View - Salon	19
Side View - Salon	19
Salon	20
Salon	20
Salon	20
Formal Dining	20
Day Head	20

Galley	20
Galley	21
Galley / Dinette	21
Dinette	21
Pilothouse	21
Master Stateroom	21
Master Stateroom	21
Master Head	22
Master Head	22
VIP Stateroom	22
VIP Stateroom	22
VIP Head	22
Guest Stateroom - 1	22
Laundry	23
Guest Head	23
Guest Stateroom - 2	23
Guest Head	23
Crew Quarters	23
Crew Quarters	23
Crew Stateroom	24
Crew Head	24
Crew Storage	24
Walkaround Decks	24
Bow	24
Forward	24
Flybridge	25
Flybridge	25
Flybridge	25
Flybridge	25

---

Flybridge Helm	25
Helm	25
Engine Room	26
Engine Room	26
Layout	26
Layout	26
<b>КОНТАКТЫ</b>	<b>27</b>
Контактная информация	27
Телефоны	27
Время работы	27
Адрес	27

# ХАРАКТЕРИСТИКИ

## Основная информация

Тип судна: Моторная яхта

Модельный год: 2015

Год постройки: 2015

Страна: United States

## Размеры

Длина общая: 85' 9" (26.14m)

Длина по ватерлинии: 72' 4" (22.05m)

Ширина: 20' 1" (6.12m)

Мин. осадка: 5' 4" (1.63m)

Макс. осадка: 5' 11" (1.80m)

## Скорость, вместимость и масса

Водоизмещение: 171600 Pounds

Вместимость воды: 350 Gallons

Объем топливного бака: 2500 Gallons

## Размещение

Всего кают: 4

Каюты экипажа: 2

## Корпус и палуба

Материал корпуса: Fiberglass

Дизайнер интерьера: Evan Marshall

## Информация о двигателе

---

**Двигатели:** 2

**Производитель:** MTU

**Модель:** 10V2000 M94

**Тип двигателя:** Inboard

**Тип топлива:** Diesel

---

# ПОДРОБНОЕ ОПИСАНИЕ

---

## Accommodations, Interior / Audio, Video

---

### **SALON:**

- LCD 46" TV with A/V System with subwoofer
- Phantom screen (for insects + pollen protection) with dedicated wood box for door
- 24V LED lights (Aerospace quality, specially tuned color temperature for Ocean Alexander that last over 100,000+ hours)
- Custom-designed salon table
- 14" Sunpentown wine cooler inside cabinet
- Wood paneling and cabinetry in diamond wood grain pattern (where possible)
- Granite countertop at wet-bar and TV cabinet
- Enlarged windows in salon with custom engineered solution incorporation marine grade aluminum beams allowing for industry leading window expanse. Incorporate (where possible) A/C outlet from ceiling, provides unobstructed view to outside (New for 2014 – design cues from 120)

### **MASTER STATEROOM:**

- LCD 46" TV with A/V System
- One Sub-woofer
- King-sized berth
- Two nightstands with countertop
- Granite countertop at TV cabinet and port/STBD cabinets (New for 2014 – design cues from 120)
- Built-in vanity on port side and sofa on starboard side
- Safe in hanging locker
- Enlarged windows with custom engineered solution incorporating aluminum beams and "sandwiched glass" construction technique from classed vessels. Allows of 28% greater visibility and incoming light (New for 2014)
- Full-height, cedar-lined hanging lockers with automatic lighting
- Enlarged Master bathroom window with updated cabinetry to take advantage of additional 320% additional window visibility vs. previous port light (New for 2014)
- Dual-sink head with shower and vanity
- **Heated granite floors in master bathroom**

### **GUEST STATEROOM/ VIP:**

- Queen-sized berth

- Single/double lower berths, fabric covered (Port guest stateroom)
- Dressing mirror
- LCD 24" TV & DVD with Satellite Receiver
- Cedar-lined hanging lockers with automatic lighting
- Head with stall shower

### **CREW QUARTERS:**

- Cedar-lined hanging locker with automatic lighting
- Kitchenette (sink, microwave and refrigerator/icemaker)
- Storage locker
- Drawers under bunk
- Microwave Oven
- LCD 24" TV & DVD with Satellite Receiver
- Snap-on tool chest under work bench/Pullman berth
- Lazarette space increased by 28% via opening up space under aft decking seating for additional storage. Shelf and sea-rails included (New for 2014)
- Amtico flooring
- **Additional washer/dryer**

### **HEADS:**

- Wood walls & cabinets with Granite or Marble countertops
- China sink
- Planus™ toilet system
- Seamless fiberglass stall shower w/ one-piece glass door. Industry leading seamless one-piece shower stall design provides long-term protection against moisture, water intrusion behind the shower (Unique OA feature)
- Shower door with Granite/marble frame. Shower door shall use "crystal clear" glass custom made for Ocean Alexander. Providing superior transparency and reflectiveness. Together with custom made for Ocean Alexander "minimalist and transparent water strips" provides a unique Ocean Alexander proprietary "Crystal Shower" (New for 2014)
- Grohe™ faucets for sink and shower
- Custom bathroom hardware
- Custom bathroom fixtures
- Air extraction in each head shall be by low noise extraction fans, switched separately from lights. Fans to discharge air outside
- Granite flooring

### **GALLEY:**

- New galley layout with cabinetry storage under stairs, bi-fold door at aft galley corner (New for 2014)
- Granite/ marble countertops (done in the US)
- **Granite/ marble floor in galley: Marron Emperador**



- Wood cabinetry
- **Custom S/S potholder for cook-top**
- Granite flooring
- Storage cabinets
- Elkay™ Double sinks with pull out faucet
- Overhead dish locker forward
- Overhang cabinet in galley
- Whirlpool™ garbage disposal
- 36" Jenn-Air™ Refrigerator
- 30" Jenn-Air™ Over-the Range Microwave
- 30" Gaggenau electric cook top
- 30" Jenn-Air™ electric oven
- 15" Whirlpool™ trash compactor
- Fish/Paykel dishwasher

## INTERIOR DÉCOR:

- Wood paneling and cabinetry in diamond wood grain pattern (where possible)
- Interior ceiling panels removable and finished with Diamond faceted edging. Provides a sharper and structured tailored look (New for 2014 – design cues from 120)
- Evan Marshall designed interior pilot station and display pod with matching wood/Ultraleather and “floating” display pod Ergonomically designed and laid out to enhance pilot experience/performance (New for 2014 – design cues from 120)
- **All walnut interior (satin varnish)**
- Windshield defrosters
- Weather-tight doors to side deck
- Phantom screen (for insects + pollen protection) with dedicated wood box for door
- Dedicated freezer forward of Dinette
- Wood flooring
- Pantograph doors in Pilothouse
- Ocean Alexander Fresh Air system: with filtered fresh air drawn from outside and vented to lower staterooms for constant fresh, clean air. Makes for a clean and healthy environment that reduces free radicals and increase oxygen levels (New for 2014)
- Designer pull handles for drawers & cupboards
- Satin varnish for interior finish w/ countertops in high gloss
- Fabric covered walls for lower walkway walls
- Concealed hinges throughout interior cabinets
- Hanging lockers with dual-locking mechanism
- Washer/ dryer (Commercial quality, Energy star washer/dryer)
- Concealed Chest Freezer in front of Dinette
- \$60,000 décor allowance for carpet, bedspreads, and soft goods
- S/S hardware
- Flip-up additional storage fwd of dinette/under windshield
- USB power plug at lower helm and inside MSR nightstand

- Dedicated oversized drawer for golf club/sport rackets/bulky items storage under fwd stateroom berth

### **EXTERIOR:**

- 2" elliptical 316 Stainless steel handrails on main deck, 1-1/2" on FB. Elliptical conforms better to human grip than traditional round rails. Provides greater "grip strength" for safety and comfort (Unique OA feature)
- S/S anchor roller
- Fiberglass staircase from cockpit to FB
- Wet bar with sink, bar refrigerator-icemaker on FB or Aft Deck
- FB seat w/ storage underneath and high gloss table
- Teak deck for aft deck and walkway to midship
- Teak swim platform w/ teak steps
- Elec. S/S salon door to Aft Deck
- Teak bow and stern staffs
- Lighted OA logo
- Aft Deck shower, dockside water inlet
- Four U-shaped rails on swim step
- Boat deck sliding hatch
- Side boarding gates at Aft Deck
- Recessed boarding ladder on starboard gunnel
- Sunpad on forward deck
- Custom exterior canvas and windshield mesh covers
- Flybridge deck outboard storage increased by 54% via additional storage lockers on port and starboard where possible (New for 2014)
- Anchor chute cover (New for 2014)
- **Second stabilizer monitor on Flybridge**

### **TURN KEY (New for 2014):**

- Full fuel tanks upon initial delivery
- Safety first aid kit
- Fenders, lines, flare kit; throw ring, fire extinguishers, bell
- Spare Parts package (Spare: Bilge pump, LED light, Pencil Zinc, Engine/ Generator filter, Wiper blades, Touch up paint, Fuses, Engine manuf. Spare parts kit, Generator manuf. spare parts kit, Breakers, Sump pump box, Float switch, Hydraulic gas-strut, Vimar outlet, GFI outlet, Vimar switch, Wood veneer)
- Wheel Puller for ship propellers
- Chocks
- 14' Tender with 60HP
- 10-man life raft in valise bag
- 2 sets of bed linens on all berths with pillows and towels

- Dinner china including dinner/salad/dessert plates, soup bowls, tea cup and saucers, casserole dish, salt & pepper shakers
- **S/S transom gates for pets/children protection**
- **Under water lights (three)**
- **ACR searchlight (RCL 100D/24V) with two remotes F/B P/H**
- **24” Electric-Chef™ electric barbecue on F/B deck**
- **LED spreader lights on back of boat deck**
- **Manual awning with custom made stainless poles and marine-grade exterior” Bayline Crème” Ferreri mesh fabric**
- **Electric soft sunroof**
- **Flip down TV with DVD on F/B after hardtop**
- **Flip down TV with DVD on after deck**
- **Exterior removable ceiling panels (hard top +after deck)**
- Sunken anchor system with coverlid
- Flatware including steak knife, dinner knife, fork, spoon and dessert/teaspoon, salad forks, serving spoons & fork
- Table placemats, napkins, water/white/red/champagne wine glasses
- Galley cookware/pans.
- Toaster, electric mixer, measuring cup, rubber/metal/ plastic spatulas, mixing bowls, chef knives, cutting boards, coffee machine, iron

## Construction

---

### **GENERAL:**

- Ocean Alexander employs various techniques to reduce sound and vibration. Focusing on providing a quiet and comfortable yachting environment through various proprietary techniques of controlling sound and noise transmission. Some of these techniques include, multiple insulation barriers including reflective materials, absorptive materials, dampening materials, air pockets and flexible and isolation mounts. Ultimately resulting in vibration/sounds levels that are industry leading and at times 1/2 to 1/10 of ISO-6954 requirements (Unique OA feature)
- Longitudinal and lateral fiberglass stringers filled with high-density foam
- All exterior hardware to be S/S 316 or to manufacturer requirements
- Fiberglass with infusion lamination manufacturing technology
- Frameless window
- Vinylester resin with high-density structural foam. High-density allows for high temperature resistivity and particular advantage in thermal and acoustic insulation. Usually only found in vessels 120'+ (New for 2014)
- Reinforced collision bulkhead
- Weather-tight bulkheads with further sound and temperature insulation

- Painted exterior surface with professional grade Alexseal polyurethane paint and epoxy based primers. Highest gloss and color retention compared with gelcoat or other paint brands (Unique OA standard feature, not an optional upcharge like competitors)
- Marine grade aluminum beams for floors, walls and ceiling. Provides greater rigidity and monolithic structure. Prevents movements and “creaky” sounds while underway
- Use of cross-knit directional carbon fiber in high stress area for added structural integrity and torsional strength
- Fiberglass staircase from cockpit to FB w/teak steps

### ***HULL / BOTTOM:***

- Black boot top stripe
- Interior structural components all bonded to hull
- Three coats of Seahawk primer, hi-build epoxy barrier coat and covered with three coats of Seahawk self-polishing bottom paint (Unique OA feature, optional on competitors)
- Bronze through-hull fittings

## **Mechanical**

---

### ***MAIN ENGINES:***

- MTU 10V 2000 M94 1600HP HP engine includes 24-month warranty and MTU Concierge Program (unique OA feature where Concierge is included free of charge compared to optional extra)
- Two control stations: FB & PH, with complete engine instrumentation with lighted, modern switches
- Delta-T Intake/ exhaust fans with demister to eliminate moisture from the intake airflow to keep machinery spaces dry
- Adjustable/Reversible Delta-T fans for engine exhaust located on superstructure instead of hull side. Maximizes water protection and salt spray, resulting in safer and lower maintenance ownership (Unique OA feature)
- Engine hour meter
- Electric engine control
- Engine alarm system (oil and temperature)
- Wet exhaust and including water temperature, oil pressure, hour meter and start/stop controls in engine room and remote start/stop controls in the pilot house
- Dripless engine shaft seal logs
- Dripless seal for rudderpost
- Complete engine instrumentation, two stations
- S/S rail on side of engine

### ***GENERATOR:***

- Kohler®32 KW genset includes 5 year/2,000 hour warranty (2x)
- Generator exhausts to be water-drop type per “Centek”, “Marine Exhaust Co.” or equal
- Generator set resiliently mounted and installed with sound shield & vibration dampener
- Generators with gas/ water separator

### ***WINDLASS / MOORING:***

- Hydraulic windlass, VR4000
- Stainless steel plow type anchor 125lbs w/ 300ft anchor chain (3/8" HT) & chain stopper
- Chain counter
- Two Maxwell VC2500 vertical electrical rope winches for aft deck
- Hands-free anchor chain wash system – allows for cleaning of chain during anchor operation (New for 2014)

### ***THRUSTER / STABILIZERS:***

- Keypower Hydraulic Bow Thruster 25HP, stern 25HP with proportional control
- Keypower Hydraulic Stabilizers (9 Sq. Ft. x 2) with dual monitor in Pilothouse & F/B

### ***STEERING/CONTROL:***

- Hydraulic Steering System
- S/S Rudders
- Bronze Struts with cutlass bearing
- High performance, computer-designed and machined class “S” propellers
- Zincs on rudders, shafts
- Interior steering wheel Ultraleather wrapped (color: Fudge), exterior stainless steering wheel on FB
- **Electric Stidd helm seat (low helm only) (color: Fudge)**
- **Electric Shades with remote for Salon, Dining, and Master windows**
- Two Stidd® Mechanical helm seats in FB (color: Polar)
- Propeller shaft Aqua 22HS. 22HS is a high-grade austenitic alloy stainless steel that provides superior corrosion resistance (comparable to Aqua 22) along with excellent

toughness and high strength (comparable with Aqua 17). A no compromised approach adopted by the navies around the world

## OTHER:

- Hydraulic 1750lbs davit
- Fire extinguisher system with engine-shutdown feature
- Oil change system for both engines and genset
- All engine room and bilge spaces shall be primed and top coated with polyurethane paint system
- Hepworth® heavy-duty commercial grade pantograph windshield wipers & washers w/ intermittent function
- Color-coded piping for fuel, water and hydraulic system
- Heavy-duty Kahlenberg® air horn
- Aluminum diamond plate flooring in engine room
- Detailed stringers in engine room and lazarette
- **ECOMar™ waste treatment system (600 per day)**
- **Gulfcoast™ fuel polish system based on US military Abrahamas-M1 tank design**
- **Sea Recovery 900G/Day water maker w/auto fresh water flush operation, PH Neutralizer, UV sterilizer and Commercial Pre-filter**
- **Wireless Yacht Controller remote (1X) installed in US**
- Ocean Alexander proprietary “dry bilge ventilation system” with dedicated bilge exhaust to outside. This provides constant airflow to keep the bilges dry and mildew free. Any moisture from condensation is evacuated outside the yacht to keep a clean and healthy cruising environment. (New for 2014)

## Plumbing

---

### **FRESH WATER SYSTEM:**

- Headhunter pressure fresh-water system
- 2mm thickness 316 S/S water tank w/ sight gauge
- Fresh water outlet with hose for engines & generators
- Fresh water wash down, at bow & stern & boat deck
- Dockside water connection
- Two 40-gallon water heater with high-density fiberglass insulation w/ high efficiency heating element
- **Seagull™ water purifier (ADEX design award winner w/ filtration to 0.1 microns & EPA certification for microbiological purification)**

### **FUEL SYSTEM:**

---

- 4.5mm thickness 5052 Aluminum fuel tanks with sight gauges and tested to International Standards 33CFR 510(a) w/ high and low fuel level alarm system
- Dual Racor® fuel/water separator with Y-valves for engine & generator
- Both side fillers for fuel tanks
- Exceeding industry safety standards with Flame arrestor installed in fuel system. Design to prevent ignition of fumes during fueling/heavy operation. Usually found only in classed vessels (New for 2014)
- Fuel system with venting and “catchment system” designed for burps or overflow accidents

### ***BILGE / DISCHARGE:***

- Common drainage system for bar sink, shower, bilge & exterior deck
- Bilge pump in forward and aft of engine room
- Automatic bilge pump - The vessel shall be outfitted with automatic bilge pump with manual and automatic switches in each space as divided by weather-tight bulkheads. High water alarms will be mounted in each of these bilge zones
- 24V shower sump pumps
- Dry bilge area arrangement in center of engine room
- Lighted bilge

## **Electrical**

---

### ***BATTERY:***

- Heavy-duty batteries
- Battery paralleling system with control switch
- Service battery switch
- Engine battery isolation switches
- AGM Batteries with 40F to 140F operating temp and industry leading low self-discharge rates 1 to 3%

### ***AC / DC SYSTEM:***

- AC outlets throughout
- All primary AC & DC electrical wiring is appropriately labeled throughout the yacht

- GFI (110V) AC outlet
- 24 Volt system
- Engine battery isolation switches
- Octoplex NMEA 2000 electrical control system. Based on aerospace technology for remote activation, control and status reporting of all AC and DC breakers. Monitors all power sources (AC and DC) for voltage, frequency and amperage abnormalities and provide visual and audio alerts. Includes enhanced circuit breaker functionality with no-load indication, dimming and usage information with touch screen monitors that are user reconfigurable. Brown-out configurable control through auto load shedding is included where operator designated equipment (e.g. navigation and other essential systems) remains powered-on while automatically switching other systems off. Octoplex NMEA 2000 Vessel system monitor system. Provides main access doors, tank level, bilge level and battery monitoring of current, voltage and temp

### ***SHORE POWER CONNECTER:***

- Shore power receptacle 100+50AMP in transom with cable master
- **ASEA 220V transformer package-allow 220v marina shore connection**

### ***AIR CONDITIONING:***

- Cruisair® compressors for central air conditioner, rated for extreme Tropical climates (Reverse Cycle capable for operation down to 40F)
- Refrigerant type is accepted worldwide under the Montreal Protocols
- Where possible A/C exits from custom made ceiling panels hidden from view. Shortens A/C ducting thus improving efficiency and speed of cooling by over 20%. Also reduces dB reading by over 7 dB (New for 2014 – design cues from 120)
- Air-conditioning rated for Extreme Tropical climates
- **F/B Air condition 24000 BTU**
- **Dometic Air Package**

### ***NAVIGATION PACKAGE:***



- Furuno DRS12A Radar
- Furuno GP33OB GPS
- Furuno NavPilot 700
- Furuno M6044A VHF
- Furuno Fish Finder DFF1
- Furuno AIS with NMEA GPS
- Furuno FA70001A Multi-station system
- KVH TracVision HD7 with DirecTV Receivers
- Ritchie Compass 5"
- **Hatterland display upgrade all monitor from 17" to 19" touch**

### ***N2KVIEW SAFETY & SECURITY MONITORING PKG:***

- These security/safety automatic monitoring and alert abilities include using Apple iPad or Android for wireless access to operate, view, and alarm Octoplex data and navigation system with a fully customizable screen layout, and remote notification (cell phone) capability.
- These monitoring abilities include: Main Engines and Generators, AC Monitoring, DC House Bank Battery Monitoring, Engine Room Weather-tight Bulkhead Doors, Tank Levels, Fire System, Bilge Level (High-water), Exterior Door Sensors

### ***LIGHTING:***

- 24V LED lights (Aerospace quality, specially tuned color temperature for Ocean Alexander)
- Convenience lights
- Dimmers for salon, MSR, and exterior lights
- International navigation lights

### ***CHARGER:***

- Victron® 100AMP Charger
- Victron® battery charger

### ***BONDING SYSTEM:***

- Bonding system throughout
- The vessel's bonding and grounding systems shall include copper straps secured to the hull and running the full length of the vessel parallel to centerline. Engines, generators, metallic through hulls, strainers, and pump bodies shall be connected to the bonding strap using 8 AWG wire minimum or equivalent

### **OTHER:**

- Vimar™ switches and outlet
- Smart Y-adaptor
- **Panasonic intercom system include Panasonic phone system and 7x**
- **Digital Panasonic phones for connection in MSR#1, Guest #3, Crew#1, Galley#1**

## **Исключения**

---

При продаже яхты исключаются личные вещи владельца.

## **Отказ от ответственности**

---

Компания предоставляет описание судна или яхты добросовестно, но не может гарантировать точность этой информации, а также не ручается за техническое состояние. Покупатель должен проинструктировать своих агентов или оценщиков исследовать представленную информацию более подробно, по собственному желанию. Продажа судна или яхты, изменение цены или снятие с продажи будет происходить без предварительного уведомления.

# ФОТОГРАФИИ

85E08



Aft Deck



Aft Deck



Aft Deck



Side View - Salon



Side View - Salon



Salon



Salon



Salon



Formal Dining



Day Head



Galley



**Galley**



**Galley / Dinette**



**Dinette**



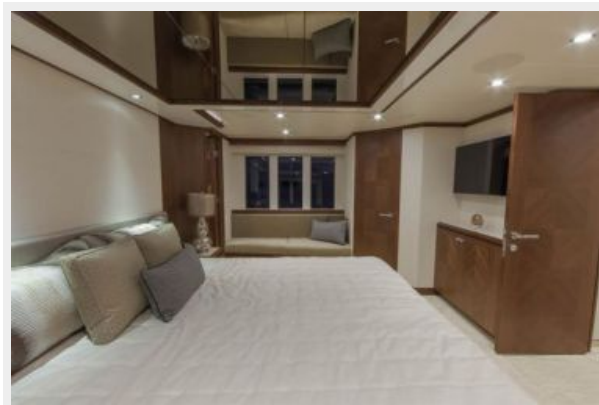
**Pilothouse**



**Master Stateroom**



**Master Stateroom**



**Master Head**



**Master Head**



**VIP Stateroom**



**VIP Stateroom**



**VIP Head**



**Guest Stateroom - 1**



**Guest Head**



**Laundry**



**Guest Stateroom - 2**



**Guest Head**



**Crew Quarters**



**Crew Quarters**



**Crew Stateroom**



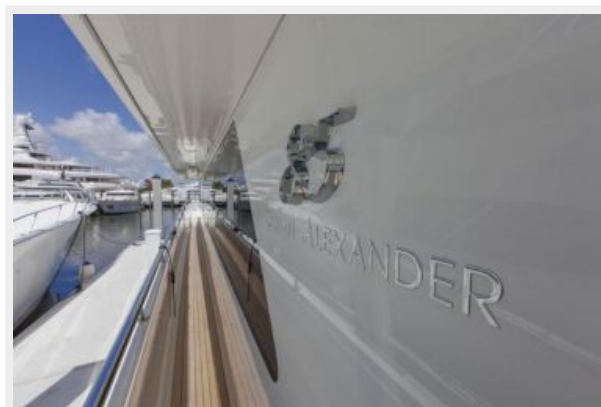
**Crew Head**



**Crew Storage**



**Walkaround Decks**



**Bow**



**Forward**





**Flybridge**



**Flybridge**



**Flybridge**



**Flybridge**



**Flybridge Helm**



**Helm**



**Engine Room**

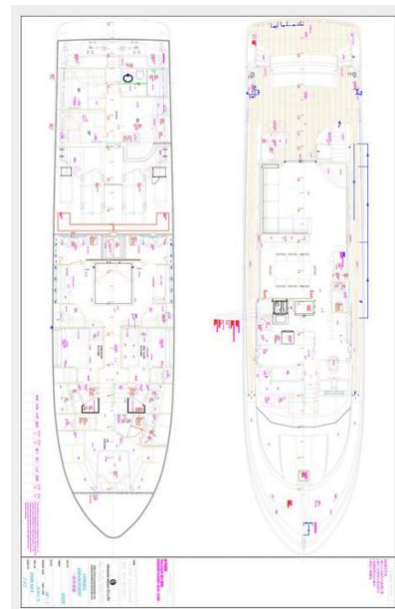
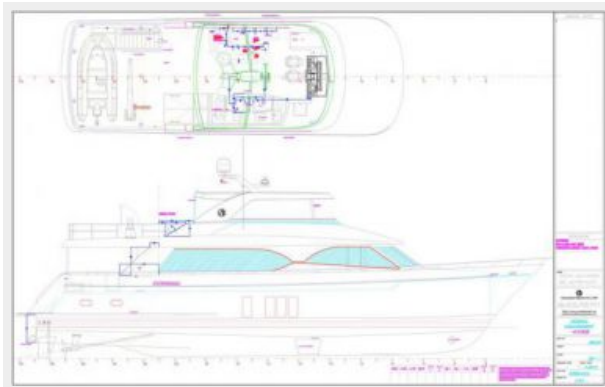


**Engine Room**



**Layout**

**Layout**



# КОНТАКТЫ

---

Андрей Шестаков (Andrey Shestakov) – ведущий яхтенный брокер отдела продаж яхт и судов компании Shestakov Yacht Sales Inc. Официальный представитель Shestakov Yacht Sales Inc. для русскоговорящих клиентов в центральном офисе компании в Майами/Форт Лодердейл/Флорида/США.

## Контактная информация

---

Email: [andrey@shestakovyachtsales.com](mailto:andrey@shestakovyachtsales.com)

Web: [shestakovyachtsales.com](http://shestakovyachtsales.com)

## Телефоны

---

Краснодарский край: **+7(918)465-66-44**

США, Майами, Флорида: **+1(954)274-4435**

## Время работы

---

Понедельник – Суббота: **9:00 - 21:00**  
EDT

Воскресенье: **Закрето**

## Адрес

---



Harbour Towne Marina, 850 NE 3rd St,  
STE 213, Dania, FL 33004