

HEAVEN'S SCENT — ENDEAVOUR CATAMARAN INC



Builder: ENDEAVOUR CATAMARAN INC

Year Built: 2012

Model: Catamaran

Price: PRICE ON APPLICATION

Location: United States

LOA: 44' 0" (13.41m)

Beam: 18' 0" (5.49m)

Min Draft: 2' 10" (0.86m)

Max Draft: 2' 10" (0.86m)

Cruise Speed: 8 Kts. (9 MPH)

Max Speed: 17 Kts. (20 MPH)

Our experienced yacht broker, Andrey Shestakov, will help you choose and buy a yacht that best suits your needs **HEAVEN'S SCENT — ENDEAVOUR CATAMARAN INC** from our catalogue. Presently, at Shestakov Yacht Sales Inc., we have a wide variety of yachts available on our sale's list. We also work in close contact with all the big yacht manufacturers from all over the world.

If you would like to buy a yacht **HEAVEN'S SCENT — ENDEAVOUR CATAMARAN INC** or would like help answering any questions concerning purchasing, selling or chartering a yacht, please call **+1(954)274-4435**

TABLE OF CONTENTS

TABLE OF CONTENTS	2
SPECIFICATIONS	6
Overview	6
Basic Information	6
Dimensions	6
Speed, Capacities and Weight	6
Accommodations	7
Hull and Deck Information	7
Engine Information	7
DETAILED INFORMATION	8
Introduction	8
Vessel Walkthrough & Accommodations	8
Salon	9
Galley	9
Master Stateroom	10
Guest Staterooms	10
Engines	10
Electrical Equipment	11
Helm	11
Electronics	12
Deck and Hull Equipment	12
Mechanical	12
Exclusions	13
Disclaimer	13
PHOTOS	14
Port Side View	14
Bow View	14
Texteline Window Covers on all windows	14

Fore Deck/House	14
Pilothouse Seats install on Foredeck for additional seating	14
Forward Seating/Covers	14
Pilothouse Roof	15
Four 110watt Solar Panels, Tracvision	15
Endeavour 11' Fiberglass Dinghy with Cushions	15
Aft port side view	15
Electric Davit System	15
Covered BBQ and Cook Top Station	15
BBQ and Cook top	16
Aft Boarding from water or dinghy	16
Aft Covered Deck	16
Exterior Shower, Compressor Outlet	16
Aluminum Pilothouse Entry Door	16
Fresh Water Outlet on Aft Deck	16
Aft Deck Area	17
Two 30amp Shore Power Hook-ups	17
Custom Enclosed Pilothouse-port	17
Pilothouse Helm Station	17
Enclosed Pilothouse-starboard	17
Quick Access to Life Jackets	17
Pilothouse Air-Conditioning	18
Custom Pilothouse Enclosure	18
Pilothouse dining for four	18
Sliding Lexan Pocket Door to Salon	18
Salon Entrance, Aluminum Windshield	18
Dining space for 6+...	18
or a cozy foursome...	19
or cozier still!	19

Salon Seating - port side	19
Entertainment Center - Salon	19
Electric Panel (Salon)	19
Master Stateroom	19
MSR - Queen Berth	20
Storage under MSR Berth	20
MSR - Wardrobe	20
MSR - dressing area	20
MSR - Additional Storage	21
MSR Head - Sink, Tankwatch Panel	21
MSR Head	21
MSR Head - Stall Shower	21
Splendide Washer/Dryer - VENTED	22
Additional Freezer/Ice Maker	22
Oceanic overhead Hatch - opaque	22
Oceanic Hatch - screen	22
Spectra Catalina 300 Water Maker	23
Oceanic Hatch - open	23
Spectra Water Maker Control Panel	23
Galley with solid surface Counter	23
3-burner Propane Stove, Microwave	24
Galley - covered stove	24
Galley - cabinet storage	24
Galley - cabinet storage	24
Galley - cabinet storage	25
Galley - drawer storage	25
Vitrigo Refrigerator and Freezer drawers	25
Galley side-by-side Refrigerator	25
GSR Head - Stall Shower	26

Starboard Guest Stateroom	26
GSR Head - Electric Toilet	26
GSR Head - Vanity, Sink	26
Aft Port Guest Stateroom	27
Forward Deck Storage	27
Northern Lights 6kW Genset	27
Access to Dual Racors - Engines & Genset	27
Fuel Line Access and Tools	27
Deck Locker - forward, port side	27
Compressor - Deck Locker, forward starboard side	28
Fore Deck - port	28
20 gal. Propane Locker	28
Fore Deck / Windlass	28
Starboard Engine	29
Port Engine	29
AGM Batteries	29
CONTACTS	30
Contact details	30
Telephones	30
Office hours	30
Address	30

SPECIFICATIONS

Overview

HEAVEN'S SCENT is in LIKE NEW condition! Every option for long distance cruising has already been factory installed, including 300 GPD water maker, additional freezer and refrigerator storage, latest electronics, solar power, 5000 PSI air compressor and more!

Basic Information

Category: Catamaran

Sub Category: Cruiser

Model Year: 2012

Year Built: 2012

Country: United States

Vessel Top: Hardtop

Cockpit: Yes

Dimensions

LOA: 44' 0" (13.41m)

LWL: 41' 0" (12.50m)

Beam: 18' 0" (5.49m)

Min Draft: 2' 10" (0.86m)

Max Draft: 2' 10" (0.86m)

Clearance: 12' 6" (3.81m)

Speed, Capacities and Weight

Cruise Speed: 8 Kts. (9 MPH)

Max Speed: 17 Kts. (20 MPH)

Displacement: 25400 Pounds

Water Capacity: 140 Gallons

Holding Tank: 70 Gallons

Fuel Capacity: 500 Gallons

Accommodations

Total Cabins: 3

Total Berths: 3

Total Heads: 2

Hull and Deck Information

Hull Material: Fiberglass

Hull Configuration: Catamaran

Hull Finish: Plastic

Engine Information

Engines: 2

Manufacturer: Yanmar

Model: 6LPA Series

Engine Type: Inboard

Fuel Type: Diesel

DETAILED INFORMATION

Introduction

The Endeavour Trawler Catamaran is a "big" 44' boat. The 18.6' beam allows great living space. She features 3 staterooms and a roomy salon. Her fully enclosed Pilothouse provides total weather protection and additional living space. She cruises efficiently at 8 knots with both engines burning approximately 3 gallons per hour, and at 17 knots approximately 20 GPH. She draws only 3', and the props are protected if you get into "skinny" water. **Heaven's Scent** is a one-owner, like new boat that is extensively equipped for long distance cruising.

Vessel Walkthrough & Accommodations

Climb aboard Heaven's Scent and you will feel right at home. This one owner beauty has been loved since the day she was splashed! With a wide beam and open interior, the Endeavour TrawlerCat has a great layout.

Boarding onto the aft deck, you have a cooking area with propane Bar-B-Que and large single-burner cook top with storage below aft, an electric davit system with 11' fiberglass dinghy w/20HP Yamaha outboard, deck lockers, propane storage, and walk-arounds P & S to the foredeck, where you will find two additional deck lockers, one containing the Brownie 5000 PSI Air Compressor to top off your dive tanks. Entering the vessel through the aft custom aluminum door, you will enter the large enclosed Pilothouse area. With a hard top and full enclosure, owners enjoy this space underway and at anchor. It features pilot and co-pilots custom 5 Star Todd Helm chairs, an upholstered bench seat to starboard, an L-shaped settee to port with fold out dining table, opening windshields, P & S doors, carpeting, air conditioning, fans, two Ocean Air overhead hatches, stereo speakers, and a complete suite of RayMarine electronics.

As you pass through the sliding Lexan pocket door, you descend the companionway steps into the salon. You will immediately notice the fine quality interior finishes such as the teak and holly style cabin sole, large windows with custom shades, The Ultra-leather upholstery and teak bulkheads and trim. The salon is large with a fixed table that can extend for additional dining area. There is a large L-shaped settee to starboard, a settee to port, additional plush seating with storage inside, two Ocean Air overhead hatches, fans, and air conditioning. Facing the dining area is the entertainment center with 32" flat screen TV with Direct TV, TracVision Satellite receiver, DVD Player, and Clarion Stereo. Below this is a U-Line ice maker and a Vittrifigo freezer.

Forward of the salon is the master stateroom with teak and holly cabin sole, an over-sized (66" wide w/ three sets of custom sheets) queen size berth, two Ocean Air opening hatches, flat screen TV, hanging locker, night stand and drawers. Stepping down to port is the master stateroom wardrobe and dressing area with hanging locker, drawers and shelves. Stepping down to starboard is more hanging and drawer storage, the master head with sink, electric

commode, stall shower and washer/dryer.

Back in the main salon and stepping down to port is the large and commodious galley featuring a Corian countertop, double polished stainless steel sinks, three burner Princess propane stove, Large Microwave oven, a Nova Kool side by side refrigerator freezer, and a plethora of cabinets and drawers for dishes, pot and pans, glassware and food for weeks on end. A few steps aft are Vitrifrigo refrigerator and freezer drawers to enhance your cold food storage for those trips to the Bahamas and beyond. Aft of the galley is one of the two remaining staterooms with double berth, more storage, and complete access to the port engine.

Stepping down from the main salon to starboard, is the third cabin with double berth, hanging and drawer storage aft, and the guest head with stall shower, sink and electric commode forward.

Salon

- CruiseAir Air Conditioning 16,000 BTU
- Large L-shaped settee and facing settee
- Hi-Lo Dining table with fold out extensions
- 32" Samsung flat screen HDTV with KVH TracVision satellite system for reception, with Direct TV and DVD player
- Clarion stereo
- Icom 504 VHF Radio w/distress call
- U-Line Icemaker
- Vitrifrigo freezer
- Open and airy feel - 15 ft. beam!
- (2) ventilation fans
- Magazine rack
- Chart Storage
- Oceanic three position overhead opening hatch
- SeaVac Central Vacuum system
- 4 large fixed windows with shade and Texteline ext. covers

Galley

Heaven's Scent's spotless Galley is located in the port hull and features everything needed to make the chef happy! You can easily create an elegant meal or fix a quick snack while enjoying the view.

- Nova Kool side-by-side refrigerator/freezer
- Vitrifrigo refrigerator and freezer drawers
- Princess 3-burner propane stove and oven
- Inverter microwave
- Polished Stainless double sinks - large!

- Single lever faucet with extendable spray nozzle
- Hot & cold pressure water
- Great storage - drawers, cabinets and overhead cabinets
- Opening port for ventilation
- Corian Solid surface countertops

Master Stateroom

- Custom Center line Queen berth with storage beneath *NOTE: This "queen" berth is actually 66" wide - standard queen is 60" - included are 3 sets of custom made sheets, one set new in box
- Nightstand with drawers and lamp
- Large Teak Hanging Locker Cabinet with louvered Doors
- Two overhead opening hatches w/ Oceanic shade and screen combo
- Two reading lamps
- 12v fan
- Shelf storage for books, etc.
- Large forward facing window and shade

Guest Staterooms

Guest Stateroom Port Aft:

- Double berth with custom mattress
- Side and aft opening ports for flow thru ventilation
- Reading lamp
- 12v fan
- Hanging locker
- Bookshelf
- Drawers

Guest Stateroom Starboard Aft:

- Double berth with custom mattress
- Side and aft opening ports for flow thru ventilation
- Reading lamp
- 12v fan
- Hanging locker
- Bookshelf
- Drawers

Engines

Great access under guest stateroom berths, with plenty of room to move around.

- Twin Yanmar 315 HP 6LPA 6 cylinder diesels fresh water cooled
- Twin Racor 500-series fuel filters with vacuum gauges for each engine
- 500-gallon fuel tank provides 1500 mile range
- Protected prop pockets
- Four blade props
- 1-1/2" SS Prop Shafts

Electrical Equipment

- (2) 30 amp 110v Input shore power cords
- AC/DC circuit breaker Panel w/ amp and volt usage and availability meters
- (2) 4D AGM House Batteries, (2) Group 31 Engine Start Batteries, (1) Group 27 Generator start Battery
- Xantrex Trace 3 KW Inverter/charger
- Xantrex Trace Engineering C-40 DVM Remote display
- Combiner Control for Solar panels, and AC/DC Battery and 110 VT management
- Northern Lights 6 kW Genset with 1018 hours
- (4) 110 watt solar panels on hard top
- 6 gallon water heater
- Balmar 100 amp Alternators on each engine with Balmar Max Charge MC-614 Multi-stage voltage regulator
- Magnum Energy Inverter control unit

Helm

- Great outdoor (or) enclosed space
- Single Lever engine controls
- Settee with port & starboard seating
- Table with fold-away leaf
- Todd 5 Star Swivel helm and co-pilot chairs
- Hard top (fiberglass) with aluminum framed (2 - opening fwd.) windows
- Dometic Air Conditioning rooftop unit
- Full custom (removable) enclosure with roll-up side and aft windows, built-in screens, exterior opaque covers for windows and custom aluminum and glass entry door
- Clarion AM/FM/CD remote control
- Remote Spotlight control
- 12V Outlets
- Two 12v fans
- Custom carpeting and upholstery
- Quick-release life jacket storage

Electronics

Everything needed to push off today! Bahamas anyone?

- Raymarine Hybrid Touch screen combination for GPS, Plotter, 48 Mile Radar with Open Array mounted on hardtop
- Raymarine Autopilot
- Raymarine Depth (2)
- 3" Ritchie Compass
- ICOM M504 VHF w/distress call capability

Deck and Hull Equipment

Heaven's Scent is easy to board and easy to get around! Wonderful side decks make docking, locking, and anchoring a breeze!

- Stainless handrails with double lifelines, Port and Starboard bow pulpits with seats and cushions.
- Anchorlift reversible Windlass w/anchor snubbers
- Two folding seats on forward house w/covers
- Pilothouse Todd 5-Star swivel seats can be moved & installed on Foredeck for additional seating
- Fourteen SS Opening ports with screens and "Peek-a-Boo" shades
- Three very large deck lockers--2 at the bow, 1 in the cockpit
- Stainless cleats
- Remote Search Light
- Deck Shower
- 55 lb Rockna anchor with 200' 5/16" chain rode
- Electric Dinghy Davits w/remote

Mechanical

- Spectra Catalina 300 gallon per day Water Maker
- (2) 16,000 BTU CruiseAir Reverse Cycle Air Conditioning Units
- Strong Dripless shaft seals
- Four-blade Props
- Bronze Rudders
- (2) electric fresh water flush toilets w/holding tank, Tank Watch system, overboard discharge, macerator
- (2) Rule bilge pumps
- Central Vacuum System
- Engine Oil Pump Out System

Exclusions

Owner's personal belongings.

Disclaimer

The Company offers the details of this vessel or yacht in good faith but cannot guarantee or warrant the accuracy of this information nor warrant the condition of the vessel. A buyer should instruct his representatives, agents, or his surveyors, to investigate such details as the buyer desires validated. This vessel or yacht is offered subject to prior sale, price change, or withdrawal without notice.

PHOTOS

Port Side View



Bow View



Texteline Window Covers on all windows



Fore Deck/House



Forward Seating/Covers



Pilothouse Seats install on Foredeck for additional seating



Pilothouse Roof



Four 110watt Solar Panels, Tracvision



Aft port side view



Endeavour 11' Fiberglass Dinghy with Cushions



Electric Davit System



Covered BBQ and Cook Top Station



BBQ and Cook top



Aft Boarding from water or dinghy



Aft Covered Deck



Exterior Shower, Compressor Outlet



Aluminum Pilothouse Entry Door



Fresh Water Outlet on Aft Deck



Aft Deck Area



Two 30amp Shore Power Hook-ups



Custom Enclosed Pilothouse-port



Pilothouse Helm Station



Enclosed Pilothouse-starboard



Quick Access to Life Jackets



Pilothouse Air-Conditioning



Custom Pilothouse Enclosure



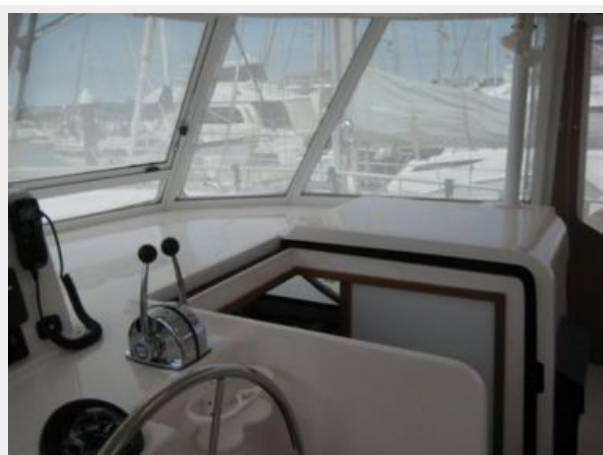
Pilothouse dining for four



Sliding Lexan Pocket Door to Salon



Salon Entrance, Aluminum Windshield



Dining space for 6+...



or a cozy foursome...



or cozier still!



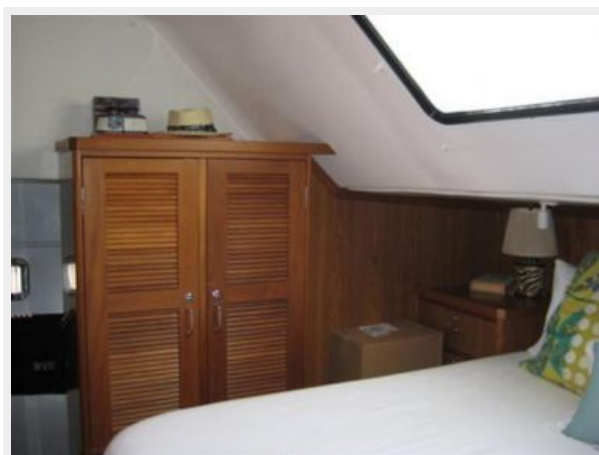
Salon Seating - port side

Entertainment Center - Salon



Electric Panel (Salon)

Master Stateroom



MSR - Queen Berth



Storage under MSR Berth



MSR - Wardrobe



MSR - dressing area



MSR - Additional Storage



MSR Head - Sink, Tankwatch Panel



MSR Head



MSR Head - Stall Shower



Additional Freezer/Ice Maker



Splendide Washer/Dryer - VENTED



Oceanic overhead Hatch - opaque



Oceanic Hatch - screen



Oceanic Hatch - open**Spectra Catalina 300 Water Maker****Spectra Water Maker Control Panel****Galley with solid surface Counter**

3-burner Propane Stove, Microwave**Galley - covered stove****Galley - cabinet storage****Galley - cabinet storage**

Galley - cabinet storage**Galley - drawer storage****Vitriigo Refrigerator and Freezer drawers****Galley side-by-side Refrigerator**

Starboard Guest Stateroom



GSR Head - Stall Shower



GSR Head - Electric Toilet



GSR Head - Vanity, Sink



Aft Port Guest Stateroom



Forward Deck Storage



Northern Lights 6kW Genset



Access to Dual Racors - Engines & Genset



Fuel Line Access and Tools



Deck Locker - forward, port side



**Compressor - Deck Locker, forward
starboard side**



Fore Deck - port



Fore Deck / Windlass



20 gal. Propane Locker



Port Engine



Starboard Engine



AGM Batteries



CONTACTS

Andrey Shestakov, leading yacht broker of the sales department of Shestakov Yacht Sales Inc. Shestakov Yacht Sales Inc., the official representative of the Miami/Fort Lauderdale FL headquarters.

Contact details

Email: **andrey@shestakovyachtsales.com**

Web: shestakovyachtsales.com/en/

Telephones

USA: **+1(954)274-4435**

Office hours

Monday – Saturday: **9:00 - 21:00 EDT**

Sunday: **closed**

Address



Harbour Towne Marina, 850 NE 3rd St,
STE 213, Dania, FL 33004