

## 72116 — OCEAN ALEXANDER



**Судостроитель:** OCEAN ALEXANDER

**Год постройки:** 2015

**Модель:** Моторная яхта

**Цена:** **ЦЕНА ЯХТЫ ПО ЗАПРОСУ**

**Местонахождение:** United States

**Длина общая:** 72' 0" (21.95m)

**Ширина:** 18' 10" (5.74m)

**Мин. осадка:** 5' 0" (1.52m)

**Макс. осадка:** 5' 5" (1.65m)

Купить 72116 — OCEAN ALEXANDER а также выбрать подходящую вам яхту из нашего каталога яхт вам поможет опытный яхтенный брокер Андрей Шестаков. На сегодняшний день компания Shestakov Yacht Sales Inc. имеет большое количество яхт в собственном списке продаж, а также тесно сотрудничает со всеми крупными яхтенными производителями по всему миру.

Для того чтобы купить яхту 72116 — OCEAN ALEXANDER а также проконсультироваться по любому вопросу связанному с покупкой, продажей, чартером яхт позвоните по телефону **+7(918)465-66-44**.

# ОГЛАВЛЕНИЕ

ОГЛАВЛЕНИЕ	2
ХАРАКТЕРИСТИКИ	4
Основная информация	4
Размеры	4
Скорость, вместимость и масса	4
Размещение	4
Корпус и палуба	4
Информация о двигателе	5
ПОДРОБНОЕ ОПИСАНИЕ	6
Accommodations, Interior / Audio Video	6
Construction	10
Mechanical	11
Plumbing	13
Electrical	14
Исключения	17
Отказ от ответственности	17
ФОТОГРАФИИ	18
72116	18
72116	18
Aft Deck	18
Salon	18
Galley	18
Salon	18
Pilothouse	19
Galley Dinette	19
Master Stateroom	19
Master Head	19
Laundry	20

---

Port Guest Stateroom	20
Guest Head	20
Starboard Guest Stateroom	20
VIP Guest Head	21
VIP Guest Stateroom	21
Crew Quarters	21
Flybridge Helm	21
Flybridge	21
Engine Room	21
Layout	22
Layout	22
<b>КОНТАКТЫ</b>	<b>23</b>
Контактная информация	23
Телефоны	23
Время работы	23
Адрес	23

# ХАРАКТЕРИСТИКИ

## Основная информация

Тип судна: Моторная яхта

Модельный год: 2015

Год постройки: 2015

Страна: United States

## Размеры

Длина общая: 72' 0" (21.95m)

Длина по ватерлинии: 61' 1" (18.62m)

Ширина: 18' 10" (5.74m)

Мин. осадка: 5' 0" (1.52m)

Макс. осадка: 5' 5" (1.65m)

Длина привального бруса: 72' 0"  
(21.95m)

## Скорость, вместимость и масса

Водоизмещение: 110000 Pounds

Вместимость воды: 300 Gallons

Вместимость сточного бака: 100 Gallons Объем топливного бака: 1500 Gallons

## Размещение

Всего кают: 4

Каюта капитана: Да

## Корпус и палуба

Материал корпуса: Fiberglass

## Информация о двигателе

---

**Двигатели:** 2

**Производитель:** Caterpillar

**Модель:** C18

**Тип двигателя:** Inboard

**Тип топлива:** Diesel

---

# ПОДРОБНОЕ ОПИСАНИЕ

---

## Accommodations, Interior / Audio Video

---

### **SALON:**

- LCD 46" TV with A/V System
- One Sub-woofer
- Wood valance board
- 24V LED lights (Aerospace quality, specially tuned color temperature for Ocean Alexander that last over 100,000+ hours)
- Removable ceiling panel
- Wood paneling and cabinetry
- Granite countertop on TV counter (New for 2014 – design cues from 120)
- Enlarged windows in salon with custom engineered solution incorporation marine grade aluminum beams allowing for industry leading window expanse. Incorporate (where possible) A/C outlet from ceiling, provides unobstructed view to outside (New for 2014 – design cues from 120)

### **MASTER STATEROOM:**

- LCD 46" TV
- DVD/CD audio stereo and video system
- Satellite Receiver
- Surround Sound system
- One Sub-woofer
- King-sized berth
- Ultraleather-upholstered headboard
- Two nightstands with marble countertop
- Storage under bed
- Bureau w/ chest of drawers
- Granite countertop at TV cabinet (New for 2014– design cues from 120)
- Private head with stall shower
- Safe in hanging locker
- Cedar-lined, full-height hanging locker w/ auto lighting
- Enlarged windows with custom engineered solution incorporating aluminum beams and “sandwiched glass” construction technique from classed vessels. Allows of
- 28% greater visibility and incoming light (New for 2014)

**HEADS:**

- China sink
- Wood walls & cabinets with granite counter tops
- Grohe™ faucets for sink and shower
- Seamless fiberglass stall shower w/ one-piece glass door. Industry leading seamless one-piece shower stall design provides long term protection against moisture, water intrusion behind the shower panels that can cause foul odors and water damage. (Unique OA feature)
- Shower door with Granite/marble frame. Shower door shall use “crystal clear” glass custom made for Ocean Alexander. Providing superior transparency and reflectiveness. Together with custom made for Ocean Alexander “minimalist and transparent water strips” provides a unique Ocean Alexander proprietary “Crystal Shower” (new for 2014)
- Planus™ toilet system
- Granite/Marble in shower floor, shower seat & wall trim
- Marble heads floor

**GALLEY:**

- Granite countertops
- Wood panel and cabinetry
- Wood flooring
- Storage cabinets and drawers
- “Drawer type” shelves in large galley cabinet
- Elkay™ Double sinks with pull out faucet
- Overhead dish locker
- Whirlpool™ trash compactor
- 36” JennAir™ Refrigerator
- 30” JennAir Over-the Range Microwave
- **24” Gaggenau electric cook top**
- Whirlpool™ garbage disposal
- **30” JennAir™ electric Oven**
- JennAir™ Dishwasher
- **Seagull™ water purifier (ADEX design award winner w/ filtration to 0.1 microns & EPA certification for microbiological purification)**
- **TV under aft corner overhang cabinetry w/ Sat Receiver**

## **INTERIOR DÉCOR:**

- Ocean Alexander Fresh Air system: with filtered fresh air drawn from outside and vented to lower staterooms for constant fresh, clean air. Makes for a clean and healthy environment that reduces free radicals and increases oxygen levels.(New for 2014)
- Evan Marshall designed interior pilot station and display pod. With matching wood/Ultraleather and “floating” display pod. Ergonomically designed and laid out to enhance pilot experience/performance. (New for 2014 – design cues from 120)
- Wood paneling and cabinetry
- European door handle
- Stainless steel hardware
- Satin varnish for interior finish with countertops in high gloss
- Push-button handles for drawers & cupboards
- Inner spring mattresses for berths
- Fabric covered walls for lower walkway walls
- Hanging lockers with dual locking mechanism
- Washer/ dryer (Commercial quality, Energy star washer/dryer)
- Air extraction in each head shall be by low noise extraction fans, switched separately from lights. Fans to discharge air outside
- \$40,000 décor allowance for salon sofa, carpet, bedspreads, and soft goods
- **Phantom Screen for salon & PH doors (for insects + pollen protection)**

## **EXTERIOR:**

- Hardtop
- Windows all fixed and flush
- Lexan® windscreen on FB
- Flip open door with fixed glass, bridge to pilothouse
- Sliding cockpit to FB hatch with stainless steel frame with glass cover inserts
- Electric sliding salon door
- Wet bar with sink and bar refrigerator on FB and bar stools
- **Flip down 32” TV with DVD on FB**
- **Flip down 32” TV with DVD on aft deck ceiling**
- **Second stabilizer monitor on Flybridge**
- **ACR searchlight**
- **Three underwater lights**
- **FB air conditioning 24,000 BTU**
- **Manual awning with custom made S/S poles and marine grade exterior “Batyline Crème” Ferrari mesh fabric**



- **24” Electri-Chef™ electric barbecue on Flybridge deck**
- **S/S transom gates for pets/children protection**
- Seating on FB with wood table
- Teak deck for aft deck and walkway to midship
- Teak swim platform w/ teak steps
- Boarding gates on port & stbd. sides
- Teak bow and stern staffs
- Heavy-duty corner cleats at both sides of Euro transom
- U-shaped rails on swim step
- Lighted OA logo
- Sunpad at bow
- Custom exterior canvas and windshield mesh covers
- Recessed boarding ladder on starboard gunnel
- Anchor chute cover (New for 2014)

### ***PILOTHOUSE / DINETTE:***

- Custom manufactured thick-veneer wood flooring
- L-shaped dinette with chart drawer under
- Sunken and extended dash with instrumentation
- Wood table top with storage cabinet under
- Windshield defrosters
- Weather-tight pantograph doors to side deck
- One Llebroc® mechanical helm seat
- Custom-design pilot station

### ***CREW QUARTER:***

- **Crew Layout (new for 2014)**
- Flip berth for single berth for additional storage space. When flipped up, provides 6’x6’x3’ full height storage space
- Entire space air-conditioned with full height storage on starboard
- Sink with storage cabinetry, separate head and one-piece design mildew/leak proof shower stall with retractable stairs to provide easier access to head and shower stall (new for 2014)

### ***TURN KEY (New for 2014):***

- Full fuel tanks upon initial delivery
- Fenders, lines, flare kit; throw ring, fire extinguishers, bell, safety first aid kit
- Spare Parts package: (Spare: Bilge pump, LED light, Pencil Zinc, Engine/ Generator filter, Wiper blades, Touch up paint, Fuses, Engine manuf. Spare parts kit, Generator manuf. spare parts kit, Breakers, Sump pump box, Float switch, Hydraulic gas-strut, Vimar outlet, GFI outlet, Vimar switch, Wood veneer)
- Wheel Puller for ship propellers, chocks
- 11' Tender with 25HP, 10-man life raft in valise bag
- 2 sets of bed linens on all berths with pillows and towels
- Dinner china including dinner/salad/dessert plates, soup bowls, tea cup and saucers, casserole dish, salt & pepper shakers
- Flatware including steak knife, dinner knife, fork, spoon and dessert/teaspoon, salad forks, serving spoons& fork
- Table placemats, napkins, water/white/red/champagne wine glasses
- Galley cookware/pans, Toaster, electric mixer, measuring cup, rubber/metal/ plastic spatulas, mixing bowls, Chef knives, cutting boards, coffee machine, iron

## Construction

---

### **GENERAL:**

- Vinylester resin with marine grade structural foam. High-density allows for high temperature resistivity and particular advantage in thermal and acoustic insulation. Usually only found in vessels 120'+ (New for 2014)
- Reinforced collision bulkhead
- Fiberglass with infusion lamination manufacturing technology
- S/S hardware
- 2" elliptical 316 Stainless steel handrails & stanchions, main deck. 1-1/2" on FB. Elliptical conforms better to human grip than traditional round rails. Provides greater "grip strength" for safety and comfort (Unique OA feature)
- All exterior hardware to be S/S 316 or to manufacturer requirements
- Ocean Alexander employs various techniques to reduce sound and vibration. Focusing on providing a quiet and comfortable yachting environment through various proprietary techniques of controlling sound and noise transmission. Some of these techniques include, multiple insulation barriers including reflective materials, absorptive materials, dampening materials, air pockets and flexible and isolation mounts. Ultimately resulting in vibration/sounds levels that are industry leading and at times 1/2 to 1/10 of ISO-6954 requirements (Unique OA feature)
- Weather-tight bulkheads with further sound and temperature insulation
- Painted exterior surface with professional grade Alexseal polyurethane paint and epoxy

based primers. Highest gloss and color retention compared with gelcoat or other paint brands (Unique OA standard feature, not an optional upcharge like competitors)

- Marine grade aluminum beams for floors, walls and ceiling. Provides greater rigidity and monolithic structure. Prevents movements and “creaky” sounds while underway
- Use of cross-knit directional carbon fiber in high stress area for added structural integrity and torsional strength

### ***HULL / BOTTOM:***

- Solid fiberglass hull bottom
- White vinyl rub rail S/S insert
- Three coats of Seahawk primer, hi-build epoxy barrier coat and covered with three coats of Seahawk self-polishing bottom paint (Unique OA feature, optional on competitors)
- Bronze through-hull fittings

### ***DECK / PILOTHOUSE:***

- Chain locker in bow with hinged access
- Removable swimming ladder
- White non-skid fiberglass decks
- Port and starboard boarding gates
- Ventilation hatch forward, trunk top
- Fiberglass staircase from deck to Flybridge
- Fiberglass swim platform w/ Euro transom

## **Mechanical**

---

### ***MAIN ENGINES:***

- **Caterpillar C-18 Acert 1150 HP engine includes 24-month warranty**
- Two control stations: FB & PH, with complete engine instrumentation with lighted, modern switches
- Engine hour meter
- Electric engine controls
- Engine alarm system (oil and temperature)
- Intake/ exhaust fans with de-mister to eliminate moisture from the intake airflow to keep dry

in machinery spaces

- Adjustable/Reversible Delta T fans for engine exhaust located on superstructure instead of hull side. Maximizes water protection and salt spray, resulting in safer and lower maintenance ownership (Unique OA feature)
- Wet exhaust and including water temperature, oil pressure, hour meter and start/ stop controls in engine room and remote start/ stop controls in the pilothouse
- S/S engine beds
- S/S rail on side of engine

### **GENERATOR:**

- **Kohler® 23 KW genset x 2 includes 5 year/2,000 hour warranty**
- **Generator exhausts to be water-drop type per “Centek”, “Marine Exhaust Co.” or equal**
- Generator with fuel/ water and gas/ water separator
- Generator set resiliently mounted and installed with sound shield & vibration dampener

### **STEERING / CONTROL:**

- Hydraulic steering system
- S/S rudders
- Bronze struts w/ cutlass bearing
- Zincs on rudders and shafts
- High performance, computer-designed and machined class “S” propellers
- **Wireless Yacht Controller remote**
- Two Stidd® mechanical helm seats on F/B (white x2)
- One Llebroc® mechanical helm seat in Pilothouse
- Dripless engine shaft seal logs and rudderposts

### **WINDLASS / MOORING:**

- Hydraulic windlass, Maxwell VWLP3500C
- Stainless steel plow type anchor 80 lbs. w/ 300ft anchor chain (3/8" HT) & chain stopper
- Chain counter
- Hands-free anchor chain wash system – allows for cleaning of chain during anchor

operation (New for 2014)

### ***THRUSTER / STABILIZERS:***

- Hydraulic bow thruster (25HP) and stern (15HP)
- Hydraulic Keypower® stabilizer (6 Sq. ft. x 2)
- Control for thruster

### ***OTHER:***

- Color-coded piping for fuel, water and hydraulic systems
- Ocean Alexander proprietary “dry bilge ventilation system” with dedicated bilge exhaust to outside. This provides constant airflow to keep the bilges dry and mildew free. Any moisture from condensation is evacuated outside the yacht to keep a clean and healthy cruising environment. (New for 2014)
- Hydraulic Steelhead ES1500 lbs. davit
- Fire extinguisher system with engine-shutdown feature-
- Fireboy MA2-1500\_FE241
- All engine room and bilge spaces shall be primed and top coated with polyurethane paint system
- Pantograph windshield wipers & washers w/ intermittent function
- **Sea Recovery™ 900Gals/day water maker**
- Kahlenberg™ heavy-duty air horn

## **Plumbing**

---

### ***FRESH WATER SYSTEM:***

- 2mm thickness 316 S/S water tank w/ sight gauge
- Fresh water outlet with hose for engines & generators
- Fresh water wash down, at bow & stern & boat deck
- Dockside water connection

### ***HOT WATER HEATER:***

- One 40-gallon water heater with high-density fiberglass insulation w/ high efficiency heating element

### ***FUEL SYSTEM:***

- 4.5mm thickness 5052 Aluminum fuel tanks with sight gauges and tested to International Standards 33CFR
- 510(a) w/ high and low fuel level alarm system
- Dual Racor® fuel/water separator with Y-valves for engine & generator
- Both side fillers for fuel tanks
- Exceeding industry safety standards with Flame arrestor installed in fuel system. Design to prevent ignition of fumes during fueling/heavy operation. Usually found only in classed vessels (New for 2014)
- Fuel system with venting and “catchment system” designed for burps or overflow accidents
- **Gulfcoast™ Fuel polishing system based on US Military Abrahams - M1 Tank design**
- **Oil changing system for engines and gensets**

### ***BILGE / DISCHARGE:***

- Common drainage system for bar sink, shower, bilge & exterior deck
- Bilge pump in forward and aft of engine room
- Automatic bilge pump - The vessel shall be outfitted with automatic bilge pump with manual and automatic switches in each space as divided by weather-tight bulkheads. High water alarms will be mounted in each of these bilge zones
- 24V shower sump pumps
- One manual bilge pump
- Dry bilge area arrangement in center of engine room
- Lighted bilge

## **Electrical**

---

### ***NAVIGATION PACKAGE:***

- Garmin 8500 series Black Box with 19” Touch screen (Two screens lower station, Two

screens upper station)

- Garmin GRID remote input device installed on lower helm seat
- Garmin 12KW Open Array Radar
- Garmin Autopilot GHC20
- Garmin VHF and Card Reader
- Garmin Black box sounder
- Garmin AIS with NMEA GPS
- Garmin MI 20 Digital Marine Multi-display
- Garmin Marine Camera (2 in engine room and 1 in aft deck)
- Maretron Ultrasonic Wind/Weather
- KVH TracVision HD7 for DIRECTTV® HDTV
- Ritchie Compass 5"

### **BATTERY:**

- Heavy-duty batteries
- Battery paralleling system with control switch
- Service battery switch
- Engine battery isolation switches

### **AC / DC SYSTEM:**

- AC outlet
- AC/ DC distribution panel with magnetic circuit breakers
- AGM Batteries with 40F to 140F operating temperature and industry leading low self discharge rates 1 to 3 %
- Octoplex NMEA 2000 electrical control system. Based on aerospace technology for remote activation, control and status reporting of all AC and DC breakers. Monitors all power sources (AC and DC) for voltage, frequency and amperage abnormalities and provide visual and audio alerts. Includes enhanced circuit functionality with no-load indication, dimming and usage information with touch screen monitors that are user reconfigurable. Brown-out configurable control through auto load shedding is included where operator designed equipment (e.g. navigation and other essential system) remains powered on while automatically switching other systems off
- Octoplex NMEA 2000 Vessel system monitor system. Provides main access doors, tank level, bilge level and battery monitoring of current, voltage and temp.
- GFI (110V) AC outlet

**BATTERY CHARGER:**

- Victron®60 AMP Charger for house bank
- Victron® battery charger
- Dedicated Battery charger for start bank

**BONDING SYSTEM:**

- Bonding system w/ AC outlet throughout
- The vessel's bonding and grounding systems shall include copper straps secured to the hull and running the full length of the vessel parallel to centerline. Engines, generators, metallic through hulls, strainers, and pump bodies shall be connected to the bonding strap using 8 AWG wire minimum or equivalent

**N2KVIEW SAFETY & SECURITY MONITORING PKG:**

- These security /safety automatic and alert abilities include using Apple iPad or Android for remote access to operate, view, and alarm Octoplex data and navigation system with a fully customizable screen layout, and remote notification (cell phone) accessibility. These monitoring abilities include: Main Engine and Generators, AC monitoring, DC House Bank Battery Monitoring, Engine Room Weather-tight Bulkhead Doors, Tank Levels, Fire System, Bilge Level (High-water), Exterior Door Sensors

**LIGHTING:**

- 24V LED lights (Aerospace quality, specially tuned color temperature for Ocean Alexander)
- International navigation lights

**AIR CONDITIONING:**



- Cruisair® systems throughout, rated for extreme Tropical climates (with reverse cycle for operation down to 40F)
- Refrigerant type is accepted worldwide under the Montreal Protocols
- Where possible A/C exits from custom made ceiling panels hidden from view. Shortens A/C ducting thus improving efficiency and speed of cooling by over 20%. Also reduces dB reading by over 7 dB (New for 2014 – design cues from 120)

### **OTHER:**

- Iso-Boost on 50 AMP x 2ea Shorepower
- Shore power receptacle 2x50AMP in transom w/cable master
- VOLT and AMP meters
- Vimar™ switches and outlets

## **Исключения**

---

При продаже яхты исключаются личные вещи владельца.

## **Отказ от ответственности**

---

Компания предоставляет описание судна или яхты добросовестно, но не может гарантировать точность этой информации, а также не ручается за техническое состояние. Покупатель должен проинструктировать своих агентов или оценщиков исследовать представленную информацию более подробно, по собственному желанию. Продажа судна или яхты, изменение цены или снятие с продажи будет происходить без предварительного уведомления.

# ФОТОГРАФИИ

72116



72116



Aft Deck



Salon



Salon



Galley



**Galley Dinette**



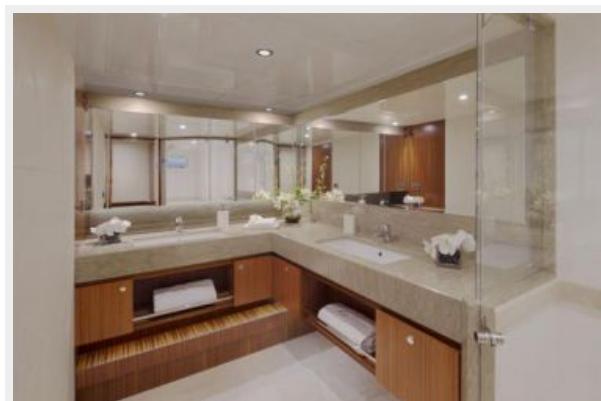
**Pilothouse**



**Master Stateroom**



**Master Head**



**Laundry**



**Port Guest Stateroom**



**Guest Head**



**Starboard Guest Stateroom**



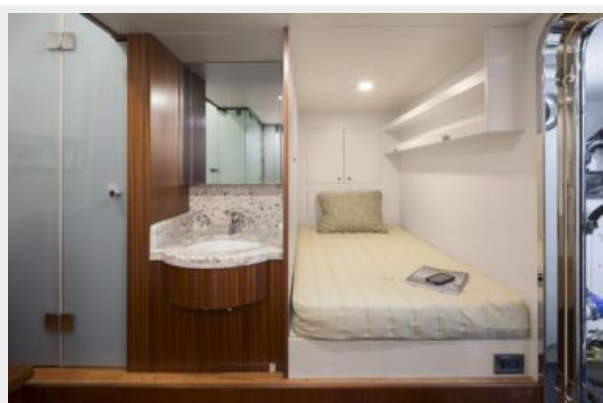
**VIP Guest Stateroom**



**VIP Guest Head**



**Crew Quarters**



**Flybridge Helm**



**Flybridge**



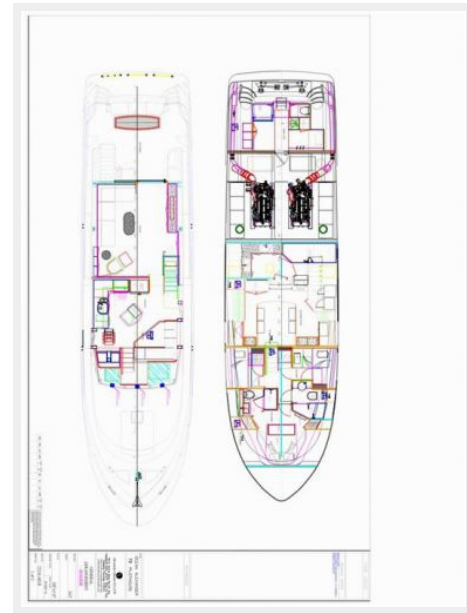
**Engine Room**



### Layout



### Layout



# КОНТАКТЫ

---

Андрей Шестаков (Andrey Shestakov) – ведущий яхтенный брокер отдела продаж яхт и судов компании Shestakov Yacht Sales Inc. Официальный представитель Shestakov Yacht Sales Inc. для русскоговорящих клиентов в центральном офисе компании в Майами/Форт Лодердейл/Флорида/США.

## Контактная информация

---

Email: [andrey@shestakovyachtsales.com](mailto:andrey@shestakovyachtsales.com)

Web: [shestakovyachtsales.com](http://shestakovyachtsales.com)

## Телефоны

---

Краснодарский край: **+7(918)465-66-44**

США, Майами, Флорида: **+1(954)274-4435**

## Время работы

---

Понедельник – Суббота: **9:00 - 21:00**  
EDT

Воскресенье: **Закрето**

## Адрес

---



Harbour Towne Marina, 850 NE 3rd St,  
STE 213, Dania, FL 33004