

## AGORA II — HORIZON



**Builder:** HORIZON

**Year Built:** 2013

**Model:** Motor Yacht

**Price:** PRICE ON APPLICATION

**Location:** Japan

**LOA:** 105' 0" (32.00m)

**Beam:** 21' 6" (6.55m)

**Min Draft:** 6' 4" (1.93m)

**Cruise Speed:** 15 Kts. (17 MPH)

**Max Speed:** 20 Kts. (23 MPH)

Our experienced yacht broker, Andrey Shestakov, will help you choose and buy a yacht that best suits your needs **AGORA II — HORIZON** from our catalogue. Presently, at Shestakov Yacht Sales Inc., we have a wide variety of yachts available on our sale's list. We also work in close contact with all the big yacht manufacturers from all over the world.

If you would like to buy a yacht **AGORA II — HORIZON** or would like help answering any questions concerning purchasing, selling or chartering a yacht, please call **+1(954)274-4435**

# TABLE OF CONTENTS

TABLE OF CONTENTS	2
SPECIFICATIONS	4
Basic Information	4
Dimensions	4
Speed, Capacities and Weight	4
Accommodations	4
Hull and Deck Information	5
Engine Information	5
DETAILED INFORMATION	6
Overview	6
Interior Decor	6
Galley	6
Bridge / Navigation	7
Pilothouse	7
Deck Equipment	7
Boat Deck	7
Fire Safety System	8
Engine Room Equipment	8
Propulsion and Steering System	8
Electrical Equipment	8
Fuel Oil Systems	9
Machinery	9
Fresh Water System	9
Sanitary System	10
Bilge Water System	10
Air Conditioning System	10
Owner Ordered Upgrades	10
Exclusions	11

Exclusions	11
Disclaimer	11
PHOTOS	12
Pilothouse	12
Aft Deck	12
Main Salon	12
Formal Dining Area	12
Galley	12
Master Stateroom	12
Master Bath	13
Master Bath	13
Twin Guest Stateroom	13
Twin Guest Stateroom	13
Crew Quarters	13
Crew Head	13
Crew Quarters	14
Skylounge Stairs	14
Skylounge	14
Skylounge	14
Sun Deck	14
Skylounge	14
Transom / Swim Platform	15
Engine room	15
CONTACTS	17
Contact details	17
Telephones	17
Office hours	17
Address	17

---

# SPECIFICATIONS

---

## Basic Information

---

**Category:** Motor Yacht

**Sub Category:** Sky Lounge

**Model Year:** 2013

**Year Built:** 2013

**Country:** Japan

## Dimensions

---

**LOA:** 105' 0" (32.00m)

**Beam:** 21' 6" (6.55m)

**Min Draft:** 6' 4" (1.93m)

## Speed, Capacities and Weight

---

**Cruise Speed:** 15 Kts. (17 MPH)

**Cruise Speed RPM:** 1800 Kts.

**Cruise Speed Range:** 2486

**Max Speed:** 20 Kts. (23 MPH)

**Max Speed RPM:** 2350 Kts.

**Displacement:** 193600 Pounds

**Water Capacity:** 500 Gallons

**Fuel Capacity:** 4000 Gallons

## Accommodations

---

**Total Cabins:** 4

**Sleeps:** 8

**Total Heads:** 4

**Captain Cabin:** True

**Crew Cabin:** 2

**Crew Berths:** 4

**Crew Sleeps:** 4

**Crew Heads:** 2

---

## Hull and Deck Information

---

**Hull Material:** Fiberglass

---

## Engine Information

---

**Engines:** 2

**Manufacturer:** Caterpillar

**Model:** C32A

**Engine Type:** Inboard

**Fuel Type:** Diesel

---

# DETAILED INFORMATION

---

## Overview

---

AGORA II features a modern European interior finished to the highest standards. The Master stateroom is on deck forward with king size bed and a lower bathroom, while below there is the VIP which can be easily called a "second master" with a king size bed, large windows and majestic en-suite bathroom. Two twin bed stateroom aft complete the well appointed guest accommodation. In addition in the guest accommodation area there is a good size storage room for laundry and stewardess's supplies. The crew accommodation is aft, with two twin cabins for four crew with a large shared bathroom, and captain's cabin with en-suite bathroom. A small crew kitchen and dinette, plus storage areas, laundry, utility room and entrance to the engine room. Main deck features a lower salon with custom imported Italian furniture, Formal dining room and galley, with day head and access to the raised pilothouse further forward. From the raised pilothouse stairs further take you to the large sky lounge, exceptionally appointed with luxury Italian imported furniture.

## Interior Decor

---

(Per layout plan/Horizon standard specs) High-gloss wood finish on vertical and horizontal surfaces (Standard Cherry wood knot/Macore/ Bird's eye maple/ walnut.) Interlocking vinyl-ceiling panels throughout Teak & holly floor in pilothouse Teak & holly or marble floors in galley Marble or granite counter top in galley Carpet flooring throughout boat except wood floor areas Italian High-quality door lock and cabinet door locks Leather saloon and dinette sofa.

Staterooms: High-density foam mattress with custom bedding covers King size bed in master stateroom Three double or twin staterooms w/ensuite head & shower Leather bed headboard Master only Wood bed frames in all cabins Hanging lockers in all staterooms Escape hatch with ladder for master stateroom Halogen ceiling lighting, DC 28V LED rope lights for safety step lights LED rope lights under sofas, beds, and valances

Heads: Marble or granite counter top and back splash in all heads Marble or granite floors in all heads Seamless polyurethane finish in all shower stalls Towel bars, rings, cup holders, brush, etc. for all heads Exhaust blower for each head Inlaid sink with curved wood face for each head Bathtub in master cabin.

Crew: Rear accommodation arrangement plan: In accordance w/ layout plan – including aft crew quarters, efficiency galley, head and shower, hanging lockers, bunks, storage lockers, A/C. Anti-noise treatment to exhaust system.

## Galley

---

SUBZERO refrigerator U-LINE ice maker Stainless steel sink w/garbage disposal Electric oven Dishwasher Full size microwave/convection oven Trash compactor GE stack type washer/dryer

## Bridge / Navigation

---

Raymarine VHF Raymarine Loudhaile Furuno Nav net complete glass bridge

## Pilothouse

---

One Stidd helm chair Admiral model Instrument console with leather covering “U” shape seats w/ wood high-low table Heavy-duty SPEICH Stainless steel wipers w/wiper washer system Variable speed control on each windshield wiper Full set engine gauges at both stations Monitoring system for important equipment (bilge pumps, blowers, nav lights) DANFORTH or equivalent magnetic compass at both helms International navigation lights Fuel and water electrical level gauges Surveillance camera system (aft deck and engine room)

## Deck Equipment

---

Nonskid fwd deck, Teak Aft decks, teak swim platform and teak steps Teak cap rail w/o varnish (2) vertical hydraulic anchor winches “Maxwell VWC4000” (2) high tensile 1/2 inch, 300 feet anchor chains (2) stainless steel 100kg anchors (2) stainless steel rollers w/hull side pocket anchors design Heavy-duty 316# stainless steel cleats and fairlead w/rollers High bulwark w/ flush mounted deck lights (4) FRP bulwark side doors Freshwater anchor chain wash down Heavy-duty S/S 2” handrail w/1-1/4” stanchions Stainless flag pole on bow rail Forward deck storage locker for fender and lines Forward deck seat Sunbathing cushion on fwd deck w/drink holders Frameless windows clear tempered laminated glass 10 mm for windshield & tinted tempered laminated glass 10 mm for side windows Stainless steel sliding door for main salon, self locking (2) deckhouse side entrance doors After deck hidden trash can and sink After deck high-low dining table (fiberglass or teak) Access flybridge through curved teak steps from after deck, stainless steel handrail S/S supporting pillars 5” on after deck Internal boat hook holders on after deck 2” stainless steel rails around swim platform (removable) at stern Built-in shower with hot/cold water above swim platform Swimming ladder extractable or foldable Solid stainless steel rub rail around upper hull side Fiberglass rub rail w/stainless steel cap on lower aft hull side Stainless steel portholes Exterior LED step lights

## Boat Deck

---

Aft of the extensive lounge is the boat deck with a large wet bar/BBQ area, bar stools, sun lounging area and seating with a high/low table. Forward is entry into the sky lounge via large sliding glass doors, plus a day head to port. Stairs on the Port side lead down to the aft deck. Boat deck includes space for a large tender or two jet skis, plus 2,500 lb davit for launching toys.

Port and starboard life rafts.

(below as per the Horizon standard specification) Non-skid flybridge deck SUNBRELLA exterior cushions SUNBRELLA canvas covers for flybridge, helm seats, aft deck seat, windshield, sun pad forward cushion and seat, standard shipyard selection Integral stainless steel handrails around exterior FRP cabinet Indirect lighting system under all furniture and seats Stainless steel sliding hatch on F/B deck step opening FRP cabinet with sink and flush mount Barbecue unit Oversize drains w/strainers on each corner of flybridge deck with internal overboard drains Fiberglass radar arch w/antenna bracket (2) TOKAI SUNSHIN search light Chrome plated BUELL air horns on top of radar arch Space for dinghy or Jet Ski Flag staff on back of flybridge Hydraulic dinghy davit 2500 lbs. LED white light Horizon group logo in P&S Liferrafts

## Fire Safety System

---

Fire insulation in engine room Fixed fire extinguisher (FM200) for engine room with remote control Auto shutdown system Automatic fire damper system Portable fire extinguishers in recessed lockers Integrated fire alarm system in pilot house, with heat or smoke detector in each cabin

## Engine Room Equipment

---

Engine room clean design with white finish and lightweight floor Fire insulation Heavy-duty insulated engine room door Stainless steel overhead grab rail on each side of engine Engine room AC florescent lights and DC dome lights Engine compartment ventilation blowers DELTA T or equivalent engine room de-mister filters Engine mounts on one piece white paint steel channel Engine alarm system for low oil pressure and high water temperature Air compressor TRIDENT hose for engine exhaust Central vacuum cleaner

## Propulsion and Steering System

---

Twin CATERPILLAR C-32A 1900hp diesel engines w/reduction gears Stainless steel shafts AQUAMET HS 22# or equivalent High performance 4 blade propellers Main and intermediate bronze struts w/backing plates Shaft and rudder packing glands with TIDES Marine driplless seals or equivalent MMC engine controls with chrome control heads or GLENDENING electronic engine control system at each station Third control station (engine gear, thruster) on aft deck. (In accordance with layout) HYNAUTIC power steering system Stainless steel rudder w/zinc plates Stainless steel emergency tiller in rudder cabin Custom steering wheels at both stations Under water exhaust system for engines w/mufflers Hydraulic 45 hp AMERICAN BOW THRUSTER HYNAUTIC or equivalent heavy-duty trim tabs with indicators

## Electrical Equipment

---



(2) Onan generators 27KW(50hz) or 32KW(60hz)with sound shield (2) GLENDENNING shore power cable masters 50amp w/75' cable each Shore power connection, Charles or equivalent ISO boost transformer 50 Amp Extra shore power plugs(2) on fwd deck Color-coded wiring for easy identification Fiberglass water/exhaust separator for generator Inverter/Charger XANTREX 4kW/150Amp or MASTERVOLT COMBI 2kW/60Amp (total 2 units) GUEST battery switch (vapor proof) Eight 225 AH AGM batteries for ship's service power Starting battery for generator All batteries enclosed with boxes and cover Main electric panel includes AC & DC circuit breakers 24 volt DC monitoring and main circuit breaker panel 12 volt cigarette lighter in main helm station Italian VIMAR switches for lighting system GFI protection for AC required outlets Indirect lighting under valance in saloon, staterooms, pilothouse and galley TV antenna on top of radar arch 24 volt to 12 volt converter for supply of 12-volt components Electrolysis bonding system Cathodic protection with zinc anodes for shafts, struts, etc. Dimmer system for DC halogen lights in aft deck Dimmer system for AC halogen lights in saloon, master & VIP cabins Sub panel design in each zone for electrical distribution

## Fuel Oil Systems

3,000 gallons aluminum fuel tanks w/sight & electric gauges Dual RACOR 75/1000 MA fuel filters/water separator, each engine Fuel transfer pump RACOR 500 MA fuel filter for each generator Oil change pump system for engines & generator

## Machinery

Engines - CATERPILLAR C-32A 1900HP/2300 RPM 2 SET Reduction Gearbox - ZF 3055A (2.52:1) 2 SET Engine Control - MMC 785CE 3 EA Shaft - AQUA 22HS 4.0" x 22'-0" 2 EA I-Strut (big) - 4"D 2 EA I-Strut (small) - 4"D 2 EA Shaft Seal - Tides Marine FSA-4000/HS6500-7000 2 SET Propeller - 43.5" x 41.25" x 5B x 1.1 2 EA Ground - Graphite Brush - 2 EA Main Fuel Tank - ALUM. 2000 GALS, TOTAL :4000GALS 2 EA Visual Fuel Tank Gauge 10K 1/2" - FINE AUTOMATION 2 EA Electronic Fuel Tank Gauge - OFFSHORE 2 EA Engine Fuel Filter - RACOR 751000MAXM30 2 EA Generator Fuel Filter - RACOR 500MAM 2 EA Fuel Transfer Pump - GIANNESCHI CP32/DC24V 1 EA Oil Change Pump - GROCO G-5/DC24V(5PORTS) 1 EA E/R Ventilation blower (intake) - DELTA-T 500-215363-45/8 230V 2 EA E/R Ventilation blower (outtake) - GIANNESCHI C503 DC24V 2 EA Bow/Stern Thrustger - ABT 45HP/16.25" 2 EA Stabilizers - TRAC DIGITAL 370/16X 1 SET

## Fresh Water System

500 gallon water tanks High-volume AC fresh water pressure pump and one DC pump for back up Fresh water Charcoal filters in main supply pipe and in galley Fresh-water hose for filling engine and generator expansion tank Marine grade lines for fresh waster system Two 30 or three 20 gallon water heaters Water Maker "Sea Recovery" 1400 gal/day Hot water circulation pump

---

## Sanitary System

---

200 gallon holding tank w/macerator pump TECMA toilet system or equivalent.(8 Toilets) "Y" valve for holding tank with deck fitting for dockside pump out 100 gallon sump tank Sump pumps system for grey water Electrical level indicators for holding tank and sump tank

---

## Bilge Water System

---

Five electric RULE bilge pumps Two manual bilge pumps in engine room and forward cabin High water level bilge alarm Bilge exhaust ventilation fans

---

## Air Conditioning System

---

Back up air conditioning sea water cooling pump Chilled water MARINE AIR air conditioning

---

## Owner Ordered Upgrades

---

Exterior hull, deck and superstructure: Teak FWD deck Custom design vertical portholes x 4 Bow teak step S/S storm cover for port lights (each) 14

Flybridge: S/S rails around boat deck

Engine Propulsion and steering system: Upgrade to CAT 1900 HP C32A engines TRAC Stabilizers. ZERO-STAB Hydraulic stern thrusters (A.B.T.38 hp ) F/B generator gauge w/ start, stop button (2)

Engine room & equipment: Complete Delta T engine room ventilation system

Electronics and lighting system: Charles ISO boost transformers(100A x 2) & 100A cable master x 2 Installation charge for owner supply all electronics Installation charge for owner supply Audio/Video system "Under Water Light" 150 watts (2 units) Spreader lights(2) on aft deck roof end

Plumbing system: Headhunter tank sensor system (Fuel & holding & water tank)

Interior finish, furniture and decoration: Day heads on main deck and boat deck Saloon pillars design High-Low TV system Three level ceiling design in master cabin Hotel grade innerspring mattresses Single chair in saloon (each) Saloon bar cabinet with glass door and lights

Galley appliances: Extra GE stacked washer/Dryer fwd hallway SUBZERO wine cooler Extra sub zero (249 series) freezer / refrig. in crew cabin 1 each Extra microwave in crew galley Magic corner in galley

Custom Options: Sky Lounge 8 ft. extension RINA Class

Hull and Main Structure: White Gelcoat finish One-piece hull lamination and longitudinal stringers Hull, Deck & superstructure are built with licensed process SCRIMPTM for improved strength and less weight Fiberglass solid hull bottom High-density foam cored construction above water line Stringers with high density foam coring Foam cored reinforcement for strength Interior structural components all properly bonded to hull Strong collision bulkhead structure for extra safety INTERNATIONAL brand anti-fouling bottom paint, w/ anti-osmosis treatment

---

## Exclusions

---

Owner and crew personal effects. A full exclusion list will be provided pursuant to a purchase agreement.

---

## Exclusions

---

Owner's personal belongings.

---

## Disclaimer

---

The Company offers the details of this vessel or yacht in good faith but cannot guarantee or warrant the accuracy of this information nor warrant the condition of the vessel. A buyer should instruct his representatives, agents, or his surveyors, to investigate such details as the buyer desires validated. This vessel or yacht is offered subject to prior sale, price change, or withdrawal without notice.

# PHOTOS

**Aft Deck**



**Pilothouse**



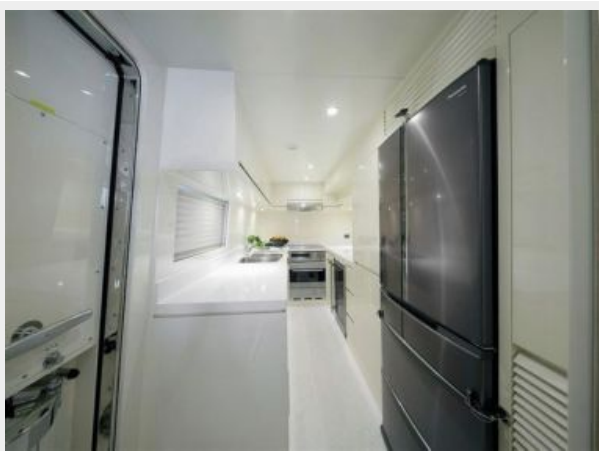
**Main Salon**



**Formal Dining Area**



**Galley**



**Master Stateroom**



**Master Bath**



**Master Bath**



**Twin Guest Stateroom**



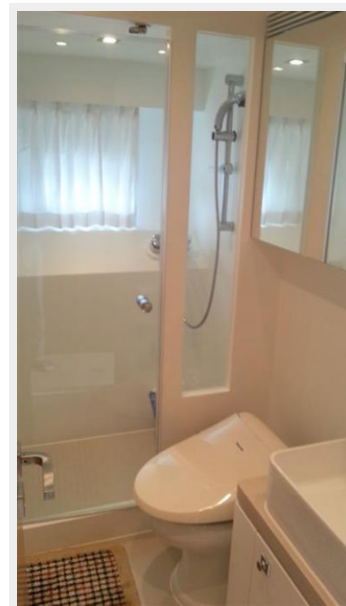
**Twin Guest Stateroom**



**Crew Quarters**



**Crew Head**





**Crew Quarters**



**Skylounge Stairs**



**Skylounge**



**Skylounge**



**Skylounge**

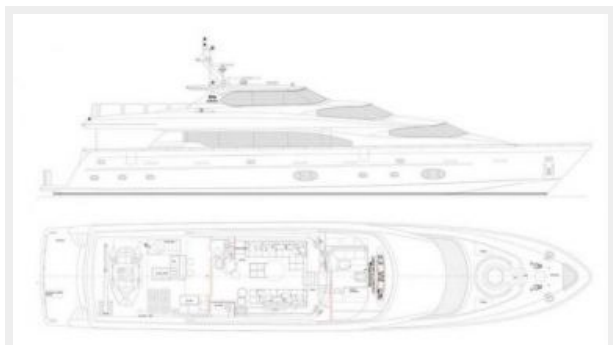


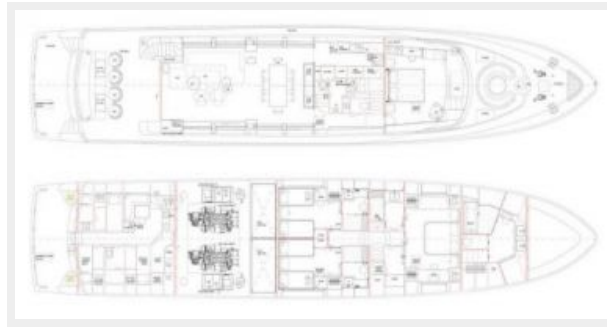
**Sun Deck**



### Transom / Swim Platform

### Engine room







# CONTACTS

---

Andrey Shestakov, leading yacht broker of the sales department of Shestakov Yacht Sales Inc. Shestakov Yacht Sales Inc., the official representative of the Miami/Fort Lauderdale FL headquarters.

## Contact details

---

Email: [andrey@shestakovyachtsales.com](mailto:andrey@shestakovyachtsales.com)

Web: [shestakovyachtsales.com/en/](http://shestakovyachtsales.com/en/)

## Telephones

---

USA: +1(954)274-4435

## Office hours

---

Monday – Saturday: **9:00 - 21:00** EDT

Sunday: **closed**

## Address

---



Harbour Towne Marina, 850 NE 3rd St,  
STE 213, Dania, FL 33004