

REGINA — SOLARIS YACHTS



Builder: SOLARIS YACHTS

Year Built: 2006

Model: Cruising Sailboat

Price: PRICE ON APPLICATION

Location: Italy

LOA: 72' 2" (22.00m)

Beam: 19' 1" (5.82m)

Min Draft: 9' 4" (2.84m)

Cruise Speed: 9 Kts. (10 MPH)

Max Speed: 12 Kts. (14 MPH)

Our experienced yacht broker, Andrey Shestakov, will help you choose and buy a yacht that best suits your needs **REGINA — SOLARIS YACHTS** from our catalogue. Presently, at Shestakov Yacht Sales Inc., we have a wide variety of yachts available on our sale's list. We also work in close contact with all the big yacht manufacturers from all over the world.

If you would like to buy a yacht **REGINA — SOLARIS YACHTS** or would like help answering any questions concerning purchasing, selling or chartering a yacht, please call **+1(954)274-4435**

TABLE OF CONTENTS

TABLE OF CONTENTS	2
SPECIFICATIONS	4
Overview	4
Basic Information	4
Dimensions	4
Speed, Capacities and Weight	4
Accommodations	4
Hull and Deck Information	5
Engine Information	5
DETAILED INFORMATION	6
Broker's Comments	6
Construction	6
Machinery	6
Electrical Systems	7
Plumbing Systems	8
Tankage	8
Navigation Equipment	9
Domestic Equipment	10
Accommodation	11
Equipment	11
Exclusions	13
Disclaimer	13
PHOTOS	14
CONTACTS	19
Contact details	19
Telephones	19
Office hours	19
Address	19

SPECIFICATIONS

Overview

Classic Doug Petersen offering sparkling sailing performance and with an epic Dick Young interior in teak. Built and finished as only really Solaris can.

Basic Information

Category: Cruising Sailboat

Sub Category: Center Cockpit

Model Year: 2006

Year Built: 2006

Country: Italy

Dimensions

LOA: 72' 2" (22.00m)

LWL: 55' 8" (16.97m)

Beam: 19' 1" (5.82m)

Min Draft: 9' 4" (2.84m)

Speed, Capacities and Weight

Cruise Speed: 9 Kts. (10 MPH)

Max Speed: 12 Kts. (14 MPH)

Displacement: 94798.77266 Pounds

Water Capacity: 396.258078 Gallons

Holding Tank: 80.57247586 Gallons

Fuel Capacity: 475.5096936 Gallons

Accommodations

Total Cabins: 4

Total Berths: 8

Total Heads: 4

Hull and Deck Information

Hull Material: GRP

Deck Material: Teak

Hull Designer: Doug Peterson

Engine Information

Engines: 1

Manufacturer: Volvo Penta

Model: TAMD63 L-A

Engine Type: Inboard

Fuel Type: Diesel

DETAILED INFORMATION

Broker's Comments

A true blue water cruiser by Doug Peterson. A Dick Young interior in teak offering 4 cabins with 4 ensuite bathrooms. Raised saloon and navigation area with panoramic views. Hydraulic sail handling with in-mast furling.

Fully equipped with electronics, communication systems, watermaker and air-conditioning.

Construction

RCD Status: The yacht conforms with the essential safety requirements of Directive 94/25EC (Recreational Craft Directive) and is categorised A – “Ocean”.

Hull, Deck & Superstructure Construction:

- GRP sandwich with airex core.
- Deckhouse cruising cutter.
- Teak deck 12mm glued with epoxy to deck.
- Grey hull.
- Awlgrip light grey paint. Hull repainted new 11/2008.

Keel & Rudder:

- Semi-balanced GRP-Airex core rudder blade with internal stainless steel cage welded to stainless steel rudder shaft.
- Lead fin keel with moderate bulb.

Machinery

Engine & Gearboxes:

- 1 x Volvo Penta TAMD63 L-A 318 hp with 2 Racor filters.

Maintenance & Performance:

- Engine Hours: 3,100.
- Cruising Speed: 9 knots.
- Max Speed (Under Sail): 11.8 knots.

Propulsion & Steering:

- Shaft drive.
- 4-bladed folding propeller by SPW with variable pitch.
- Lewmar 300SVTBH 25hp hydraulic bow thruster from PTO on generator.
- Ambassador rope cutter on shaft.

Electrical Systems

Voltage Systems:

- 24 volt domestic system.
- 12 volt engine and genset system.

Battery Banks:

- 960 amp hour domestic deep cycle gel/AGM batteries.
- 300 amp hour (2 x 150ah) engine and genset cranking batteries.

Battery Chargers:

- 2 x 100Amp/24V Mastervolt battery chargers.
- 1 x 30ah 12v Mastervolt charger for engine/genset batteries.

Alternators:

- 1 x 150ah 24v alternator for domestic batteries.

Generator:

- Onan 17kw generator.
- Generator Hours: 1,360.

Shore Power:

- Shore power.

Plumbing Systems

Fresh Water & Water Heating System:

- 1 x Gianneschi fresh water pressure pump ECOJET for warm-cold water.
- 1 x Gianneschi salt water pressure pump ECOJET (anchor chain- toilette).
- 60ltr. Gianneschi and Ramaciotti Hot water boiler 1,5kw/220V coupled.
- Condensation tank pump Gianneschi CP20.

Watermaker:

- HEM 25/1400 watermaker with Sand filter 208 l/min.

Bilge Pumps:

- Fore and aft peak bilge pumps Gianneschi CP20.
- 2 x Engine room bilge pump - Gianneschi CP25.
- 2 x Grey water tank pumps - Gianneschi CP25.

Tankage

Fuel:

- Total capacity of 1,800 litres.

Fresh water:

- Total capacity of 1,500 litres.

Grey/Blackwater holding tanks:

- Total greywater capacity of 1 x 85 litres forward and 1 x 120 litres aft.
- Total blackwater capacity of 100 litres.

Navigation Equipment

- 1 x Raystar 120 GPS.
- Raymarine Radar/Chartplotter with 3 multifunctional colour displays E120. One in owner's cabin, one on chart table, one on steering wheel.
- 4 kw Radome Antenna on mast.
- 1 x E80 display for crew cabin.
- 2 x SUUNTO compasses on the steering stands.
- Raymarine LOG, Depth sounder, Wind speed + direction, Close-hauled and running, and rudder indicator.
- Marinet Internet connection in each cabin, Mini PC in all cabins with central server in Salon.
- Sailor Inmarsat CH2095 RS232.
- Meteofax Fastnet Radio FMD55.
- 2 x Raymarine RAY 240 in cockpit and chart table, with antenna on mast top and stern.
- 1 x Sailor HC4500-250W with additional charger and battery (MCA code) SBB radio telephone.
- 1 x Sailor Iridium SC 4000 in Salon and owner's cabin.
- 1 x Raymarine Satcom 500 Broadband for tel, fax and e-mail.

Domestic Equipment

Galley:

- Galley top surfaces in black slate.
- 3 x Refrigerators with 1 x switchable to freezer 250 litre.
- 1 x Freezer 150 litres (fridge and freezer work on compressors installed in engine room with Veco heat exchanger).
- 1 x Techimpex 4-burner cooker with oven on gimbals.
- 1 x Miele dish washer.
- 1 x Miele washing/drying.

Heads/Showers:

- 4 x En-suite bathrooms with showers – Tecma Silence 24v WCs.
- 4 x Shower pumps Gianneschi CP20.

Heating & Ventilation:

- Veco air condition of 45000BTU in crew, owners, guest, galley and saloon.

Entertainment:

- Each cabin has satellite TV connection and the possibility to look video independent from other cabins.
- 1 x ACER TV 20" in owner's cabin and 1 in saloon.
- Radio/Hi-Fi Bose 3.2.1. II in owner's cabin. Active loudspeaker with tuner in saloon.
- 2 x Bose loudspeaker in cockpit, 2 in guest cockpit.

Lighting:

- Search light installed in mast.

- LED lighting system in all cabins, salon and galley.

Accommodation

Summary of Accommodation:

- Teak joinery.
- 4 x cabins: 1 x owner, 2 x guest and 1 x crew cabin.
- 3 x 2 total 6 persons excl. saloon, plus 1 x crew cabin (sleeps 2), total 8.
- 1 x Large deck saloon with brown leather upholstery, 1 x seating area opposite galley.

Equipment

Rig:

- Mast height: 28.51m.
- Rod rigging, Navtec (renewed 2011).
- Navtec hydraulic tensioners for backstay, boomvang, magic trim and outhaul.
- All Spectra sheets and halyards replaced in 12/2009.
- Sparcraft Alloy custom mast with hydraulic in-mast furling.
- Sparcraft Alloy boom with hydraulic outhaul operated from cockpit.
- 1 x Carbon fiber spinnaker boom.
- 2 x Reckman RF 90 furlers for foresails, 1 x carboni furler for main sail furl and 1 x for outhaul.
- Bow sprit in carbon fiber.

Winches:

- 2 x Electric master Harken 980 winches.
- 1 x Electric stay sail winch, Harken 70.2.
- 1 x Manual Harken 70.2 preventer winch.

- 2 x Manual Harken 60.2 winches for running backstay.

Sails:

- Sail area: 270m².
- North Sails 3DL 2011.
- Mainsail 3DL 680 XSY Twaron/Carbon 26,000 DPI.
- Furling genoa 3DL 680 XSY Twaron/Carbon 26,000 DPI.
- Furling stay sail 3 DL XSY Twaron/Carbon 19,400DPI.
- Tri-radial gennaker, 1.5 oz Contender Maxilite with 2 ply luff in Specta 275m² incl. sock.

General:

- Opacmare 1103 21CA electric hydraulic passerella - 2,1m long.
- Bathing ladder in aluminium
- Deck wash system installed in anchor locker.
- 1 x Bauer Junior II dive compressor with 4 diving bottles, 1 x Air compressor for fore peak and aft peak.
- Bauer Jr 2 Dive Compressor with store place 4 dive tanks 12.5 l.

Anchoring & Mooring Equipment:

- Lewmar 3000 Series electric windlass with capstan.
- Additional cleats on stern and bow.

Covers, Canvas & Cushions:

- Bimini for central cockpit.
- 2 x Additional seats integrated in stern.
- Covers for all skylights.

Tender & Outboard:

- Dinghy 3.60 Focchi.
- Tender outboard Honda 20 hp 4 stroke.

Safety Equipment:

- 2 x Life rings with light buoy and 30m line installed on rail aft.
- 2 x Jon buoy installed on aft rail.
- 2 x Life rafts.
- 10 x Life Jackets.

Fire-fighting equipment:

- 2 x Maxi Marine 10 automatic/manual fire extinguishers
- 8 x Fire extinguishers throughout the yacht (2 with CO²)
- Logistic Gas Alarm.

Exclusions

Owner's personal belongings.

Disclaimer

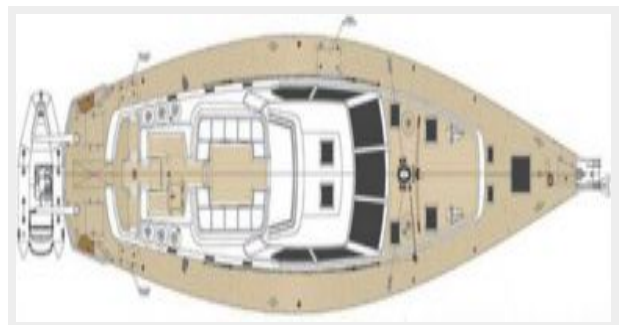
The Company offers the details of this vessel or yacht in good faith but cannot guarantee or warrant the accuracy of this information nor warrant the condition of the vessel. A buyer should instruct his representatives, agents, or his surveyors, to investigate such details as the buyer desires validated. This vessel or yacht is offered subject to prior sale, price change, or withdrawal without notice.

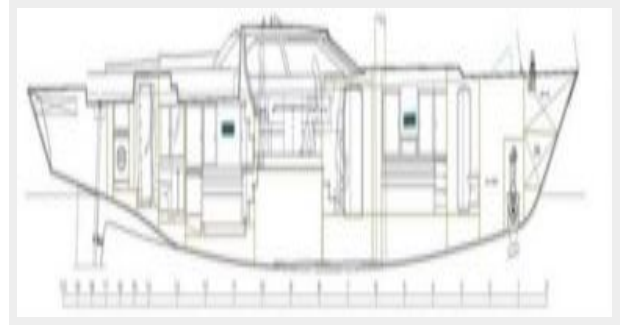
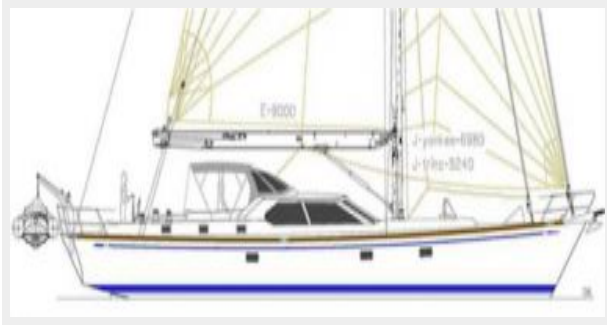
PHOTOS











CONTACTS

Andrey Shestakov, leading yacht broker of the sales department of Shestakov Yacht Sales Inc. Shestakov Yacht Sales Inc., the official representative of the Miami/Fort Lauderdale FL headquarters.

Contact details

Email: andrey@shestakovyachtsales.com

Web: shestakovyachtsales.com/en/

Telephones

USA: +1(954)274-4435

Office hours

Monday – Saturday: **9:00 - 21:00** EDT

Sunday: **closed**

Address



Harbour Towne Marina, 850 NE 3rd St,
STE 213, Dania, FL 33004