

SEAS THE MOMENT — CHAPARRAL



Судостроитель: CHAPARRAL

Год постройки: 2013

Модель: Крейсер

Цена: **ЦЕНА ЯХТЫ ПО ЗАПРОСУ**

Местонахождение: United States

Длина общая: 31' 0" (9.45m)

Ширина: 10' 0" (3.05m)

Макс. осадка: 3' 3" (0.99m)

Крейс. скорость: 27 Kts. (31 MPH)

Купить **Seas the Moment — CHAPARRAL** а также выбрать подходящую вам яхту из нашего каталога яхт вам поможет опытный яхтенный брокер Андрей Шестаков. На сегодняшний день компания **Shestakov Yacht Sales Inc.** имеет большое количество яхт в собственном списке продаж, а также тесно сотрудничает со всеми крупными яхтенными производителями по всему миру.

Для того чтобы купить яхту **Seas the Moment — CHAPARRAL** а также проконсультироваться по любому вопросу связанному с покупкой, продажей, чартером яхт позвоните по телефону **+7(918)465-66-44**.

ОГЛАВЛЕНИЕ

ОГЛАВЛЕНИЕ	2
ХАРАКТЕРИСТИКИ	3
Обзор	3
Основная информация	3
Размеры	3
Скорость, вместимость и масса	3
Размещение	4
Корпус и палуба	4
Информация о двигателе	4
ПОДРОБНОЕ ОПИСАНИЕ	5
Broker Comments & Service Updates	5
Test Results	5
Optional Features	5
Hull & Deck Features	5
Cockpit Features	7
Cabin Features	7
Technical Features	9
Исключения	10
Отказ от ответственности	10
ФОТОГРАФИИ	12
КОНТАКТЫ	28
Контактная информация	28
Телефоны	28
Время работы	28
Адрес	28

ХАРАКТЕРИСТИКИ

Обзор

The Chaparral 310 Signature offers award winning styling, advanced cockpit features, dry-riding performance and a comfort-minded cabin. Chaparral's design excellence shines through with a standard fiberglass hard top that creates a big cruiser feel and all-weather protection. A spacious interior with pedestal berth forward and convertible settees in the salon and mid cabin area. Solid surface counters and quality hardware are found in the galley. The Axis Joystick Docking and Chaparral quality are a match made in Heaven! You will never stress leaving from or return to your homeport. A premium express finished to very high standards, MerCruiser 260hp with Bravo III cruise the 310 Signature Sundancer at 27–30 knots and reach a top speed in the low 40s. This is very clean boat that spent evenings cruising the Bradenton River. Recently waxed and detailed. You should make this a top choice for your boating needs.

Основная информация

Тип судна: Крейсер

Модельный год: 2013

Год постройки: 2013

Страна: United States

Размеры

Длина общая: 31' 0" (9.45m)

Длина по ватерлинии: 27' 0" (8.23m)

Ширина: 10' 0" (3.05m)

Макс. осадка: 3' 3" (0.99m)

Трапы: 10' 6" (3.20m)

Скорость, вместимость и масса

Крейс. скорость: 27 Kts. (31 MPH)

Дальность на крейсерской скорости:
183

Вместимость воды: 40 Gallons

Вместимость сточного бака: 28 Gallons

Объем топливного бака: 118 Gallons

Размещение

Всего кают: 1

Корпус и палуба

Материал корпуса: Fiberglass

Информация о двигателе

Двигатели: 2

Производитель: Mercruiser

Модель: 5.0L MPI Axius

Тип топлива: Gas/Petrol

ПОДРОБНОЕ ОПИСАНИЕ

Broker Comments & Service Updates

- Oil & Filters 02/2015
- BRAVO III Stern-drive – Quick & Efficient
- 12,000 BTU A/C with Reverse Cycle Heat
- Blue Hull – Mirror Like Finish
- Axius Joystick (UPGRADE)
- 5kW Kohler Generator 32 hours
- Detailed inside and outside 02/2015

Test Results

RPM	GPH	MPH
1000	2.8	6.2
1500	5	8.7
2000	9	10.4
2500	12	13.0
3000	16	20.8
3500	20	31.0
4000	25	36.5
4850	39	45.9

Optional Features

- Garmin 5212 Chartplotter
- Garmin VHF
- Windlass with foot controls
- Flag Pole
- Cockpit Cover
- Remote Spotlight
- Axius Joystick Docking
- 5.0 kW Kohler® Low CO – Gas, 120V/60 Cycle (32 Hours)
 - Includes Remote Start, Muffler & Stainless-Steel Exhaust Outlet, Closed Cooling, Remote Fuel Filter, Seacock & Seawater Strainer

Hull & Deck Features

- 40 Amp Battery Converter/Charger
- 100% Perma Panel Marine Coring (Lifetime Warranty)
- Aluminum Fuel Tank
- Anchor Hull Guard – Stainless Steel
- Bilge Pumps – Automatic (Forward & Aft)
- Bow Rail – Stainless Steel with Welded Stanchions
- Brass Threaded Garboard Drain Plug
- Corrosion Protection System
- Counter Rotating Props
- Electric Horn
- Electric Outlets – 120 Volt
- Electrical Connectors – Water Tight and Triple O-Ring Sealed
- Engine Room Lighting
- Extended V-Plane Hull
- Fiberglass Hardtop with Exclusive Foredeck Walk-Thru Hatch and Stainless Steel Grab Hand Rails
- Fire Extinguishing System – Automatic/Manual
- Galvanic Isolator
- Heavy Duty Bilge Blowers
- Integrated Polished Stainless Steel Anchor Chute with Rope Locker
- Kevlar Reinforced Hull Laminate
- Lifetime Limited Hull Warranty
- Navigational Lights
- Premium Hydropel Resin
- PVC Rubrail With Stainless Steel Insert
- Shore Power with 50 ft. Cord
- Stainless Steel Cleats (8) 2 Pull Up and 6 Fixed
- Stainless Steel Hardware – Including Electro Polished Thru-Hull Fittings, Large Bow and Stern Eyes and Flush Pull Latches
- Transom Stereo Remote
- Trim Tabs – Electric with Indicator Lights
- Triple Battery Set-Up with Crossover Switches
- Water Heater with Heat Exchanger Resin, High-Performance Vinylester
- Canvas (Sunbrella®):
 - Aft Curtain w/Bungee Straps
 - Canvas Storage Bag
 - Front Curtains
- Windlass System:
 - Anchor, Galvanized
 - Anchor Chute, Stainless Steel
 - Anchor Rope/Chain Storage w/Hatch
 - Windlass, Rope/Chain w/Foot
 - Switches
- Certifications:

- Meets Applicable USCG &
- ABYC Standards
- NMMA Certification
- Mercury Installation Quality Certification

Cockpit Features

- Captain's Helm Seat – Adjustable
- Carry-On Cooler with Dedicated Storage – 25 Quart
- Cockpit Drainage System (CDS) with Self Bailing Fiberglass Liner
- Cockpit Table and Dedicated Storage
- Diamond Pattern Non-Skid
- Double Companion Helm Seat
- Electrically Actuated Engine Room Hatch
- Fiberglass Molded Deck Toe Rail
- Hand-Stitched Diamond Pattern Upholstery
- Lighting – LED Indirect Courtesy
- Lighting – LED Tri-Color Overhead
- Molded Steps to Access Fore Deck with Safety Rail
- Premium Vinyl Cockpit Upholstery with Nano-Block Technology™
- Seating – Opposing Bench Seats with Storage Below
- Snap-In Carpet
- Stainless Steel Drinkholders
- Stainless Steel Speaker Covers
- Stainless Steel Transom Gate
- Transom Shower with Stainless Steel Hose
- Transom Storage Compartments
- TV Cable/Power Hook-Up
- Wet Bar with Solid Surface Countertops, Sink, Faucet, Pressure Water, Storage and Trash Receptacle
- Wraparound Walk-Thru Windshield with Custom Stainless Steel Hardtop Supports

Cabin Features

- 55-Ounce Carpeting – Removable
- Aft Cabin Privacy Curtain
- Aft Cabin U-Shaped Seating – Converts to Double Berth with Backrest as Filler
- Cabin Overhead and Indirect Lighting
- Cabin Port Lights – Fixed (4)
- Solid Wood Cabin Table with Stainless Steel Hardware and Dedicated Storage

- Carbon Monoxide Detectors (3)
- Color Coordinated Cabin Fabrics with Scotchgard Protectant
- DC Power Plug
- Dinette Sofa with Storage Below
- Fiberglass Cabin Floor Liner with Floor Storage
- Fiberglass Ceiling Liner
- Forward Deck Hatch with Screen and Shade
- Grab Handle (For Exiting Cabin)
- Hand Stitched Diamond Pattern Upholstery
- Lighting – 12 volt
- Lockable Opaque Sliding Cabin Entry Door
- Main Cabin Television 22" Flat Screen, Dual Positioning with DVD, Hardtop Antenna and TV Coax to Dockside
- Premium Sound System: AM/FM CD Player with Remote Control Display, MP3 Jack , (2) Cabin Speakers, and (4) Cockpit Coaxial Speakers (Compatible For Sirius Satellite)
- Sirius Satellite Tuner & Antenna (N/A International)

Galley:

- Base Cabinet with One Drawer and Storage
- Dual Voltage Stainless Steel Refrigerator -120v/12v
- Flush Mount Single Burner Electric Stove
- Power Vent
- Solid Surface Countertop with Stainless Steel Sink, Faucet and Sink Cover
- Stainless Steel Handrails
- Stainless Steel Microwave Oven
- Upper Storage Cabinet
- Trash Receptacle

V-Berth:

- Custom Dual Position Forward Bed with Storage Underneath
- Forward Mirrored Bulkhead
- Hanging Locker – Cedar Lined (Port)
- Lined Privacy and Window Drapes
- Side Shelf Storage
- Side Storage Lockers – For Linens
- Starboard Entertainment Cabinet with Drawer Storage

Mid-Berth:

- Seating, Conversation Pit – Converts to Double Berth w/Slide Out Base &
- Dedicated Filler Cushion Storage
- Storage, Cabinets

Head:

- Handrail, Stainless Steel
- Head (VacuFlush®)
- Head, Enclosed – Full Fiberglass w/Shower & Curtain
- Power Vent, 12V
- Storage, Medicine Cabinet w/Mirrored Doors
- Vanity w/Sink, Faucet & Storage Below

Technical Features

Control Station:

- Accessory Panels with Illuminated Switches, Indicator Lights and DC Breakers
- Aluminum Dash Panels
- Binnacle Mount Throttle and Shifter Control
- Central Grounding Bars
- Compass
- DC Power Plug
- Digital Instrumentation with Glass Lenses, Brushed Aluminum Faces, and Stainless Steel Bezels
- Engine Hour Meters
- Instrument Dimmer Switch
- Loom Wrapped Wiring
- Mahogany Steering Wheel with Protective Cover
- Power Steering
- Tilt Steering Helm
- Water Resistant Breakers Located in Deck Coaming and Provides Additional Storage
- Windshield Wiper – Starboard

Electrical Systems:

- Battery Charger/Converter, 120V
- Battery Solenoid Switches, 12V (3)
- Battery Trays w/Mounts
- Breaker Panels, Waterproof – Electronic
- Isolators, Galvanic (2)
- Mercathode II (Sterndrives Only)
- Panel, DC Main Breaker
- Panel, Main Distribution – AC
- Panel, Main Distribution – DC
- Shore Power, Dual 120V/30 Amp w/50' Cords & Adapters
- TV/Phone Inlet w/TV Antenna & TV Shore Cord
- Wiring, Color-Coded w/Chafe Protection

- Air Conditioning/Heating: Reverse Cycle System (12,000 BTU)
- Custom Integral Vent System

Engine Room:

- Bilge Pump, 12V Automatic
- Bilge Pumps, 12V Automatic High-
- Water (1 Bilge, 1 Cabin)
- Blowers, 12V Bilge (2)
- Fire Suppression System – Automatic w/Manual Pull
- Gel-Coated Engine Room
- Insulation, Engine Room
- Lighting, 12V
- Oil Filters – Remote

Fuel System:

- Fuel Lines, USCG – Type A-1
- Fuel Tank, Aluminum
- Valve & Electric Sending Unit

Water System:

- Freshwater Washdown Spigot
- Pressure Water System w/12V Pump
- Shower, Cockpit – Hot & Cold
- Water Heater, 120V (6-Gallon) w/Exchanger
- Water Inlet, Dockside
- Water Manifold System
- Water Tank (40-Gallon)

Underwater Gear:

- BRAVO III Stern-Drive
- Stainless Steel Propellers
- Trim Tabs, Hydraulic
-

Исключения

При продаже яхты исключаются личные вещи владельца.

Отказ от ответственности

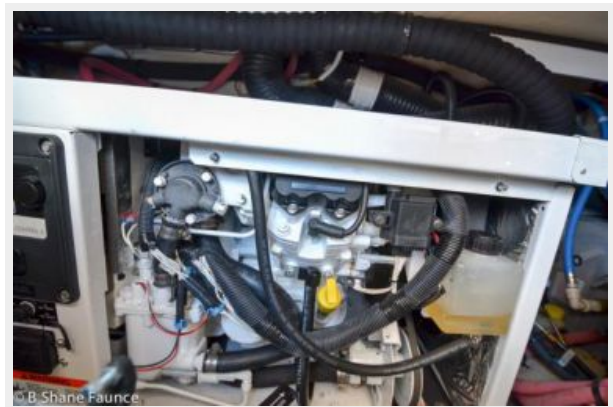
Компания предоставляет описание судна или яхты добросовестно, но не может

гарантировать точность этой информации, а также не ручается за техническое состояние. Покупатель должен проинструктировать своих агентов или оценщиков исследовать представленную информацию более подробно, по собственному желанию. Продажа судна или яхты, изменение цены или снятие с продажи будет происходить без предварительного уведомления.

ФОТОГРАФИИ











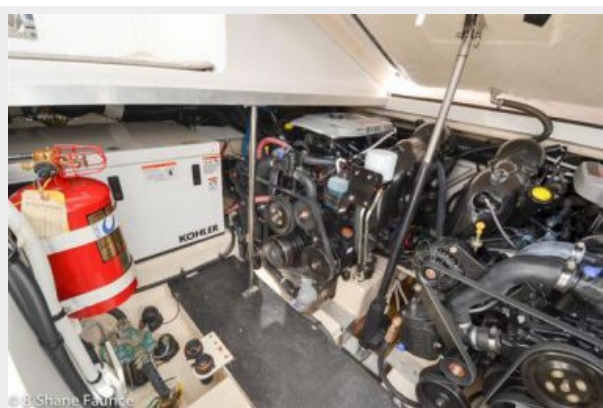






















КОНТАКТЫ

Андрей Шестаков (Andrey Shestakov) – ведущий яхтенный брокер отдела продаж яхт и судов компании Shestakov Yacht Sales Inc. Официальный представитель Shestakov Yacht Sales Inc. для русскоговорящих клиентов в центральном офисе компании в Майами/Форт Лодердейл/Флорида/США.

Контактная информация

Email: andrey@shestakovyachtsales.com

Web: shestakovyachtsales.com

Телефоны

Краснодарский край: **+7(918)465-66-44**

США, Майами, Флорида: **+1(954)274-4435**

Время работы

Понедельник – Суббота: **9:00 - 21:00**
EDT

Воскресенье: **Закрето**

Адрес



Harbour Towne Marina, 850 NE 3rd St,
STE 213, Dania, FL 33004