

BLUE SKIES — MORGAN



Builder: MORGAN

Year Built: 1980

Model: Trawler

Price: PRICE ON APPLICATION

Location: United States

LOA: 46' 0" (14.02m)

Beam: 15' 0" (4.57m)

Max Draft: 4' 8" (1.42m)

Our experienced yacht broker, Andrey Shestakov, will help you choose and buy a yacht that best suits your needs **Blue Skies — MORGAN** from our catalogue. Presently, at Shestakov Yacht Sales Inc., we have a wide variety of yachts available on our sale's list. We also work in close contact with all the big yacht manufacturers from all over the world.

If you would like to buy a yacht **Blue Skies — MORGAN** or would like help answering any questions concerning purchasing, selling or chartering a yacht, please call **+1(954)274-4435**

TABLE OF CONTENTS

TABLE OF CONTENTS	2
SPECIFICATIONS	3
Overview	3
Basic Information	5
Dimensions	5
Speed, Capacities and Weight	5
Accommodations	6
Hull and Deck Information	6
Engine Information	6
PHOTOS	7
CONTACTS	14
Contact details	14
Telephones	14
Office hours	14
Address	14

SPECIFICATIONS

Overview

Blue Skies is a 1980 Morgan Heritage 46" trawler/motorsailer with a custom aluminum pilothouse attached. The pilot house with it's beautiful tongue and groove paneling is open and comfortable.

The boat is designed to go great distances. It burns less than a gallon per hour moving at 6.5 knot;, with the 150 gallon fuel capacity this boat can travel over a 1,000 miles, under power without refueling.

Blue Skies is designed to be a live aboard that is power self sufficient; 16 solar panels provides that power.

For the people that want to be un-tethered from a dock this is the boat.

Additional Specs, Equipment and Information: **Boat Name** Blue Skies **Dimensions** LOA: 50 ft 0 in Beam: 15 ft 0 in LWL: 40 ft 0 in Maximum Draft: 4 ft 8 in Displacement: 36000 lbs **Engines** Engine 1: Engine Brand: Westerbeke Engine Model: 80N4 Engine Type: Inboard Engine/Fuel Type: Diesel Engine Hours: 1700 Drive Type: Direct Drive Engine Power: 80 HP **Tanks** Fresh Water Tanks: 1 (225 Gallons) Fuel Tanks: 2 (150 Gallons) Holding Tanks: 2 (40 Gallons) **Electronics** VHF Depthsounder Autopilot - Raytheon ST 4000 Plotter - Gramin Chartplotter 2011 **Inside Equipment** Air conditioning Refrigerator - Norcold Hot water **Electrical Equipment** Inverter - FX3600 **Outside Equipment/Extras** Solar panel - 2 - Kyrosera Panels 130W Electric windlass

General Description

1980 Morgan heritage 46 trawler/motorsailerr with the custom Pilot house has a solid 1 1/2" Fiberglass hull and the pilothouse is aluminum. She is 50' overall, 15' beam and draws only 4' 8".

Bridge clearance is 13' with mast down and 36' with mast up. The mast is on a hinged platform that allows one person to easily raise and lower it.

This is a go anywhere ultra-efficient comfortable live aboard cruiser. Blue Skies burn's less than 1GPH at 6.5 Knots ,with its in 150gal fiberglass fuel tanks , it has arrange of over 1000 mile range between refueling. A small sailing rig will get you home and also steadies the boat.

Decks are plumbed to collect all rain that hits the boat to a 200 + gal Fiberglass built in water tank. The custom built AC can run on solar power alone. 16 solar panels provide 110v AC power at all times; no need to go into marinas to plug in. or run the engine or generator to charge batteries.

Boat is built to stay out for months at a time comfortably.

Engines Westerbeke 80N4 Diesel

80 horsepower Engine/Fuel Type: 4 cyl Diesel

Hours Approx 1700

Tanks All built in Fiberglass tanks located under the sole

Fuel 2 tanks Approx. 150 gls .

Water 1 tanks Approx. 225 gls.

Holding tank 2 Approx 40 gls.

Electronics:

- Autopilot is Raytheon ST 4000
- Chartplotter is Garman - 2011.
- VHF radio 2008
- Depth sounder
- Hummingbird bottom recorder - 2009
- Outback system - 2009
- Flex max 80 MPPT charge controller
- FX3600 inverter
- 16 -Kyrosera 130watt panels
- Water heater - 2000
- Inverter is also a battery charger and there is another small 10 amp for the house batteries
- Anchors and chain- 2008

Mechanical, Plumbing and electrical

- 80 amp high output small frame alternator
- Two bank AGM battery system – 8D 230 amps house battery , 8D 230 amp hr starting battery, emergency cross-over switch house to starter battery
- 3 stage battery charger
- Positive and negative distribution buses AC/DC panel
- Outback charger with remote panel and temperature sensor
- Outback Battery monitor
- Outback Inverter
- Separate battery bank for 110v system

Fuel and plumbing

- Improved fuel filter system – Completely redundant fuel system, bigger Duel Racor filters, electric fuel pump (constantly conditions fuel while engine runs, can be used to transfer fuel from one tank to another, makes bleeding the fuel lines easy)
- 2-switch Tank Tender for diesel

- Hot and cold water shower

Ground Tackle

- Powerful electric windless
- Fortress anchor
- Danforth anchor
- Delta anchor
- anchor platform, rollers for 2 full-size anchors
- All chain rode
- Nylon/chain rode

Broker Notes

This Morgan Heritage Pilothouse is designed for the true live aboard couple. The aluminum pilothouse with the interior in an tongue and groove paneling provides a safe comfortable environment to run the boat. The beaming salon below makes living easy.

The covered aft deck makes a great place to relax and enjoy the sunsets. With it's 4'8" draft it's ideal for the southwest coast of Florida and the islands. The mast on the hinged platform makes travelling the ICW a breeze.

Basic Information

Category: Trawler

Model Year: 1980

Year Built: 1980

Country: United States

Dimensions

LOA: 46' 0" (14.02m)

LWL: 40' 0" (12.19m)

Beam: 15' 0" (4.57m)

Max Draft: 4' 8" (1.42m)

Clearance: 13' 0" (3.96m)

Speed, Capacities and Weight

Displacement: 3600 Pounds

Water Capacity: 225 Gallons

Holding Tank: 40 Gallons

Fuel Capacity: 150 Gallons

Accommodations

Total Cabins: 1

Hull and Deck Information

Hull Material: Fiberglass

Engine Information

Engines: 1

Manufacturer: Westerbeke

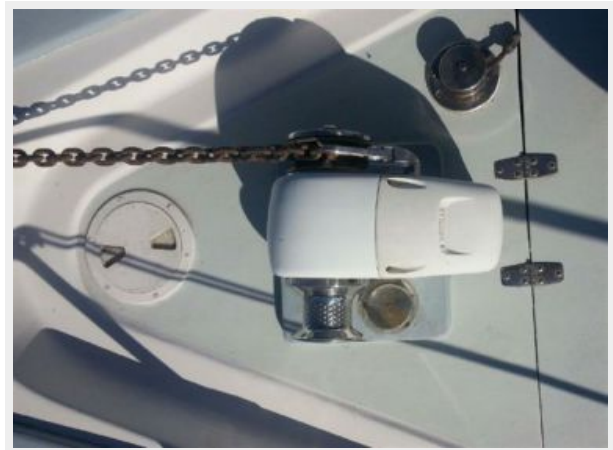
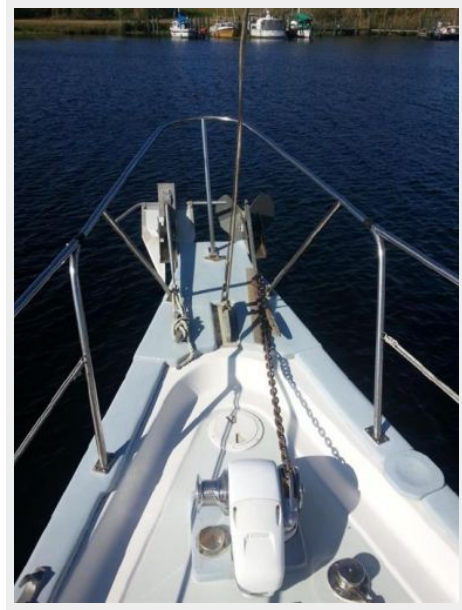
Model: 80N4

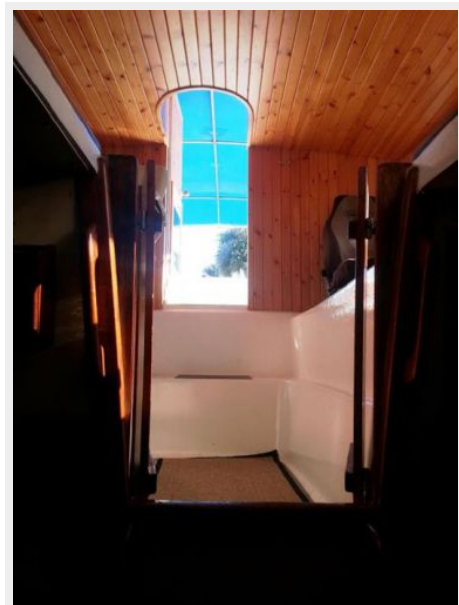
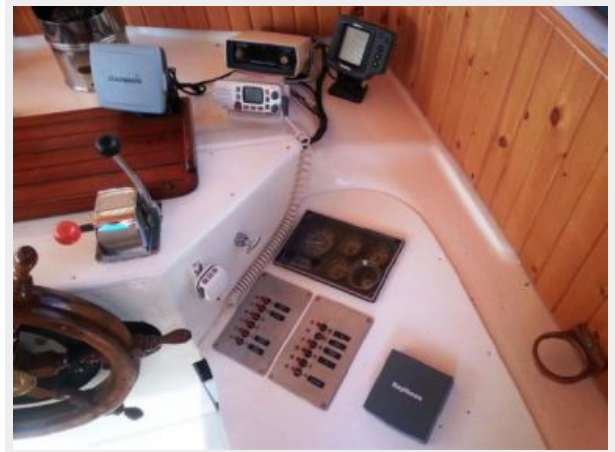
Engine Type: Inboard

Fuel Type: Diesel

PHOTOS

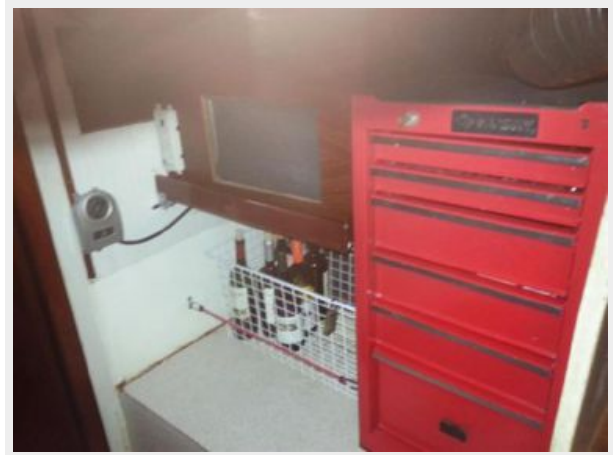














CONTACTS

Andrey Shestakov, leading yacht broker of the sales department of Shestakov Yacht Sales Inc. Shestakov Yacht Sales Inc., the official representative of the Miami/Fort Lauderdale FL headquarters.

Contact details

Email: andrey@shestakovyachtsales.com

Web: shestakovyachtsales.com/en/

Telephones

USA: +1(954)274-4435

Office hours

Monday – Saturday: **9:00 - 21:00** EDT

Sunday: **closed**

Address



Harbour Towne Marina, 850 NE 3rd St,
STE 213, Dania, FL 33004