

BLUE SKIES — MORGAN



Судостроитель: MORGAN

Год постройки: 1980

Модель: Траулер

Цена: ЦЕНА ЯХТЫ ПО ЗАПРОСУ

Местонахождение: United States

Длина общая: 46' 0" (14.02m)

Ширина: 15' 0" (4.57m)

Макс. осадка: 4' 8" (1.42m)

Купить **Blue Skies — MORGAN** а также выбрать подходящую вам яхту из нашего каталога яхт вам поможет опытный яхтенный брокер Андрей Шестаков. На сегодняшний день компания **Shestakov Yacht Sales Inc.** имеет большое количество яхт в собственном списке продаж, а также тесно сотрудничает со всеми крупными яхтенными производителями по всему миру.

Для того чтобы купить яхту **Blue Skies — MORGAN** а также проконсультироваться по любому вопросу связанному с покупкой, продажей, чартером яхт позвоните по телефону **+7(918)465-66-44**.

ОГЛАВЛЕНИЕ

ОГЛАВЛЕНИЕ	2
ХАРАКТЕРИСТИКИ	3
Обзор	3
Основная информация	5
Размеры	5
Скорость, вместимость и масса	5
Размещение	6
Корпус и палуба	6
Информация о двигателе	6
ФОТОГРАФИИ	7
КОНТАКТЫ	14
Контактная информация	14
Телефоны	14
Время работы	14
Адрес	14

ХАРАКТЕРИСТИКИ

Обзор

Blue Skies is a 1980 Morgan Heritage 46" trawler/motorsailer with a custom aluminum pilothouse attached. The pilot house with it's beautiful tongue and groove paneling is open and comfortable.

The boat is designed to go great distances. It burns less than a gallon per hour moving at 6.5 knot;, with the 150 gallon fuel capacity this boat can travel over a 1,000 miles, under power without refueling.

Blue Skies is designed to be a live aboard that is power self sufficient; 16 solar panels provides that power.

For the people that want to be un-tethered from a dock this is the boat.

Additional Specs, Equipment and Information: **Boat Name** Blue Skies **Dimensions** LOA: 50 ft 0 in Beam: 15 ft 0 in LWL: 40 ft 0 in Maximum Draft: 4 ft 8 in Displacement: 36000 lbs **Engines** Engine 1: Engine Brand: Westerbeke Engine Model: 80N4 Engine Type: Inboard Engine/Fuel Type: Diesel Engine Hours: 1700 Drive Type: Direct Drive Engine Power: 80 HP **Tanks** Fresh Water Tanks: 1 (225 Gallons) Fuel Tanks: 2 (150 Gallons) Holding Tanks: 2 (40 Gallons) **Electronics** VHF Depthsounder Autopilot - Raytheon ST 4000 Plotter - Gramin Chartplotter 2011 **Inside Equipment** Air conditioning Refrigerator - Norcold Hot water **Electrical Equipment** Inverter - FX3600 **Outside Equipment/Extras** Solar panel - 2 - Kyrosera Panels 130W Electric windlass

General Description

1980 Morgan heritage 46 trawler/motorsailerr with the custom Pilot house has a solid 1 1/2" Fiberglass hull and the pilothouse is aluminum. She is 50' overall, 15' beam and draws only 4' 8".

Bridge clearance is 13' with mast down and 36' with mast up. The mast is on a hinged platform that allows one person to easily raise and lower it.

This is a go anywhere ultra-efficient comfortable live aboard cruiser. Blue Skies burn's less than 1GPH at 6.5 Knots ,with its in 150gal fiberglass fuel tanks , it has arrange of over 1000 mile range between refueling. A small sailing rig will get you home and also steadies the boat.

Decks are plumbed to collect all rain that hits the boat to a 200 + gal Fiberglass built in water tank. The custom built AC can run on solar power alone. 16 solar panels provide 110v AC power at all times; no need to go into marinas to plug in. or run the engine or generator to charge batteries.

Boat is built to stay out for months at a time comfortably.

Engines Westerbeke 80N4 Diesel

80 horsepower Engine/Fuel Type: 4 cyl Diesel

Hours Approx 1700

Tanks All built in Fiberglass tanks located under the sole

Fuel 2 tanks Approx. 150 gls .

Water 1 tanks Approx. 225 gls.

Holding tank 2 Approx 40 gls.

Electronics:

- Autopilot is Raytheon ST 4000
- Chartplotter is Garman - 2011.
- VHF radio 2008
- Depth sounder
- Hummingbird bottom recorder - 2009
- Outback system - 2009
- Flex max 80 MPPT charge controller
- FX3600 inverter
- 16 -Kyrosera 130watt panels
- Water heater - 2000
- Inverter is also a battery charger and there is another small 10 amp for the house batteries
- Anchors and chain- 2008

Mechanical, Plumbing and electrical

- 80 amp high output small frame alternator
- Two bank AGM battery system – 8D 230 amps house battery , 8D 230 amp hr starting battery, emergency cross-over switch house to starter battery
- 3 stage battery charger
- Positive and negative distribution buses AC/DC panel
- Outback charger with remote panel and temperature sensor
- Outback Battery monitor
- Outback Inverter
- Separate battery bank for 110v system

Fuel and plumbing

- Improved fuel filter system – Completely redundant fuel system, bigger Duel Racor filters, electric fuel pump (constantly conditions fuel while engine runs, can be used to transfer fuel from one tank to another, makes bleeding the fuel lines easy)
- 2-switch Tank Tender for diesel

- Hot and cold water shower

Ground Tackle

- Powerful electric windless
- Fortress anchor
- Danforth anchor
- Delta anchor
- anchor platform, rollers for 2 full-size anchors
- All chain rode
- Nylon/chain rode

Broker Notes

This Morgan Heritage Pilothouse is designed for the true live aboard couple. The aluminum pilothouse with the interior in an tongue and groove paneling provides a safe comfortable environment to run the boat. The beaming salon below makes living easy.

The covered aft deck makes a great place to relax and enjoy the sunsets. With it's 4'8" draft it's ideal for the southwest coast of Florida and the islands. The mast on the hinged platform makes travelling the ICW a breeze.

Основная информация

Тип судна: Траулер

Модельный год: 1980

Год постройки: 1980

Страна: United States

Размеры

Длина общая: 46' 0" (14.02m)

Длина по ватерлинии: 40' 0" (12.19m)

Ширина: 15' 0" (4.57m)

Макс. осадка: 4' 8" (1.42m)

Трапы: 13' 0" (3.96m)

Скорость, вместимость и масса

Водоизмещение: 3600 Pounds

Вместимость воды: 225 Gallons

Вместимость сточного бака: 40 Gallons **Объем топливного бака:** 150 Gallons

Размещение

Всего кают: 1

Корпус и палуба

Материал корпуса: Fiberglass

Информация о двигателе

Двигатели: 1

Производитель: Westerbeke

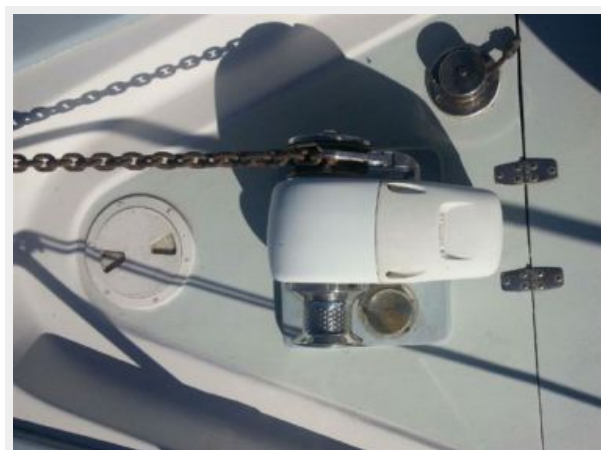
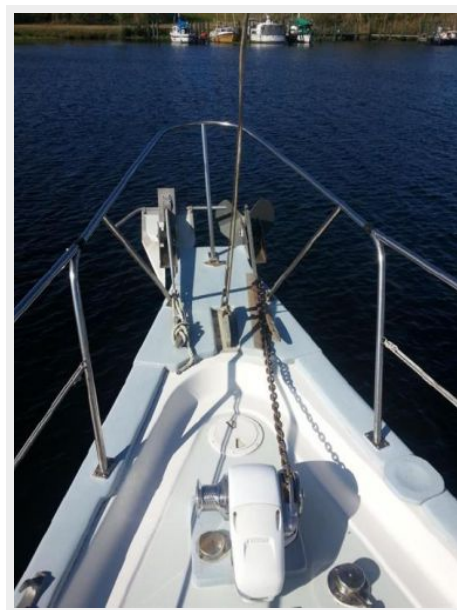
Модель: 80N4

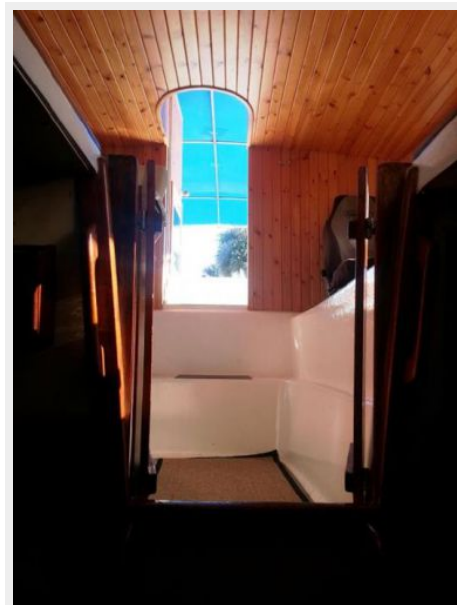
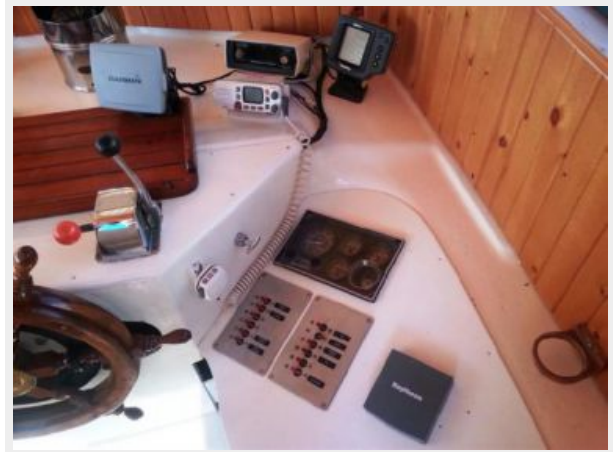
Тип двигателя: Inboard

Тип топлива: Diesel

ФОТОГРАФИИ

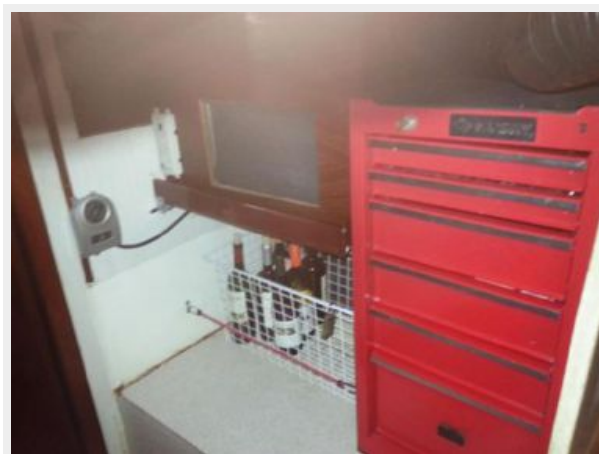














КОНТАКТЫ

Андрей Шестаков (Andrey Shestakov) – ведущий яхтенный брокер отдела продаж яхт и судов компании Shestakov Yacht Sales Inc. Официальный представитель Shestakov Yacht Sales Inc. для русскоговорящих клиентов в центральном офисе компании в Майами/Форт Лодердейл/Флорида/США.

Контактная информация

Email: andrey@shestakovyachtsales.com

Web: shestakovyachtsales.com

Телефоны

Краснодарский край: **+7(918)465-66-44**

США, Майами, Флорида: **+1(954)274-4435**

Время работы

Понедельник – Суббота: **9:00 - 21:00**
EDT

Воскресенье: **Закрето**

Адрес



Harbour Towne Marina, 850 NE 3rd St,
STE 213, Dania, FL 33004