

VIRGIN — LAZZARA



Builder: LAZZARA

Year Built: 2014

Model: Motor Yacht

Price: PRICE ON APPLICATION

Location: United States

LOA: 95' 0" (28.96m)

Min Draft: 5' 0" (1.52m)

Cruise Speed: 25 Kts. (29 MPH)

Max Speed: 30 Kts. (35 MPH)

Our experienced yacht broker, Andrey Shestakov, will help you choose and buy a yacht that best suits your needs **VIRGIN — LAZZARA** from our catalogue. Presently, at Shestakov Yacht Sales Inc., we have a wide variety of yachts available on our sale's list. We also work in close contact with all the big yacht manufacturers from all over the world.

If you would like to buy a yacht **VIRGIN — LAZZARA** or would like help answering any questions concerning purchasing, selling or chartering a yacht, please call **+1(954)274-4435**

TABLE OF CONTENTS

TABLE OF CONTENTS	2
SPECIFICATIONS	3
Overview	3
Basic Information	10
Dimensions	10
Speed, Capacities and Weight	11
Accommodations	11
Hull and Deck Information	11
Engine Information	11
PHOTOS	12
CONTACTS	30
Contact details	30
Telephones	30
Office hours	30
Address	30

SPECIFICATIONS

Overview

CUSTOM HIGHLIGHTS Nine (9) underwater LED high intensity lights

TRAC ZERO SPEED Stabilizers

Exterior Teak Package

Custom Painted Handrails

Custom Painted Hull, Deck, Flybridge and Hardtop

Custom sette on stbd side of MSR to have drawers underneath

Custom MSR layout

MSR ambient lighting around ceiling, headboard, bed

Custom etching on MSR show doors

Custom LED light mirrors in heads

Custom AV system throughout

Foredeck custom awning system

Aft deck custom awning system

Aft deck drop down TV

KVH M7-HD

Volvo Extended Warranty, 3 Years or 2,000 Hrs.

TRAC Hydraulic bowthruster

STANDARD MANUFACTURER SPECIFICATIONS CONSTRUCTION

GRP Composite Construction ∞ Hand-laid, "vacuum bagged" triaxial unidirectional "E" fiberglass hull with balsa cored bottom and PVC foam sides ∞ Hand laid, "vacuum bagged" triaxial unidirectional "E" fiberglass -with graphite balsa cored deck and flybridge ∞ Solid fiberglass chine, center line and all hull penetration areas ∞ Blister resistant gelcoat under the waterline ∞ Vinylester resin for hull and deck ∞ Bottom paint ∞ High performance UV resistant exterior gelcoat ∞ Light weight balsa cored reinforced stringer system ∞ Light weight balsa cored

bulkhead and floors, lower sole plywood ∞ Solid vinyl/PVC rub rail with stainless steel insert ∞ Quad engine stringer system ∞ Numerous applications of graphite reinforcements ∞ Composite rub rails on hull-side to protect forward windows

MECHANICAL Air Conditioning System ∞ Six zone 138,000 BTU air conditioning system with air handlers and thermostats for each zone; touch pad controls ∞ Insulated copper piping supply and return lines ∞ Individual head exhaust fans ∞ 24 VDC high-water alarm (2 aft, 1 fwd. 2 engine room)

Black Water System ∞ 250 US gallon black water storage tank ∞ Headhunter toilets ∞ Holding tank level indicator ∞ Dockside and overboard pump out ∞ Ozone Treatment Machine Grey Water System ∞ Sump box w/pump, 24V- shower/drains ∞ Sump box w/pump-air conditioning condensate drains

Control & Instruments, Main Engines ∞ Volvo display all engines ∞ Station transfer panels ∞ Shift & throttle controls, electronic with engine sync ∞ Volvo joystick control for docking and slow speed maneuverability ∞ Volvo electronic steering ∞ Key switch start/stop ∞ (2) Cockpit control stations ∞ Joystick control Volvo o Station transfer panels o Start/stop panels

Engines & Transmissions ∞ Three (3) Volvo IPS 1200 Systems ∞ Nibral counter-rotating propellers ∞ Extra pair of props Engine Room ∞ Epoxy coated engine room, white ∞ Flooring, metal diamond plate ∞ Emergency panel ∞ Alarms

Bilge System

∞ Electric Bilge AC Pump with Manifold System

∞ 24 VDC automatic bilge pumps (2 aft, 1 fwd., 2 engine room) ISIS Display System

Engine Room ∞ Freshwater hose & spigot ∞ Emergency access through deck hatch ∞ Lazzara engineered "ultra sound®" engine room ∞ Powered ventilation system with demisters for exhaust and supply ∞ Access from crew quarters Exhaust System, Main Engines ∞ Underwater , through drive units

Fire Extinguishing System ∞ Fire suppression system – automatic with engine shutdown, override and manual pull ∞ Carbon monoxide detectors in crew cabin and balcony room ∞ Six (6) mounted fire extinguishers ∞ Smoke detectors

Fresh Water System ∞ 350 US gallon potable water tank: FDA approved ∞ Aft deck shower – hot and cold ∞ Pressure water, MACH 5 240V ∞ Water filtration system ∞ Water heater, 240V (30 gallon) ∞ Individual station water maintenance shutoff ∞ Anchor/foredeck wash down system – fresh water ∞ Aft wash down system ∞ Dockside water inlet-aft deck

Fuel System ∞ 1700 gallon fuel tank ∞ Racor Fuel filters: ∞ 2 x 30 micron (generator) Racor 500 o 4 x 10 micron (main engine) Dual Racor 900 ∞ Four (4) main engine electric priming pumps ∞ Four (4) main engine manual priming pumps

Lube Oil System ∞ Lube oil change system plumbed to both main propulsion and generator engines

Noise, Thermal and Vibration Control ∞ Lazzara engineered “Ultra Sound®” engine room system ∞ Interior “Isolation Dampening” System ∞ Thermo barrier foil

Sea Water Cooling System ∞ Four (4) sea strainers ∞ Seacocks on all underwater fittings ∞ Two (2) Generator ∞ Air conditioning ∞ Watermaker (optional equipment) Steering System ∞ Volvo Electronic System ∞ Volvo joystick at upper and aft deck stations ∞ Two (2) Steering wheels

ELECTRICAL Exterior Lighting ∞ Overhead LED lights aft deck ∞ Navigation Lights (LED): ∞ Forward steaming light ∞ Port / Starboard side running lights ∞ Stern running light ∞ Anchor light ∞ Exterior LED deck lights ∞ Aft deck LED transom stairs ∞ Boat deck LED lighting ∞ Flybridge LED lights ∞ Searchlight, chrome

Generator ∞ Two (2) Onan 27.5 kW Diesel/240 VAC/ 60 Hz, single phase, with sound enclosure and control panels. (850 hours port; 850 hours starboard) ∞ Engine fitted with alternator and muffler

Electrical Grounding ∞ AC and DC Bonding and Grounding system with large zinc hull plate ∞ Volvo Active Corrosion® Protection grounding system

Interior Lighting ∞ Overhead LED lighting (low voltage DC) ∞ Emergency 24 volt DC lighting

Shore Power ∞ Glendenning cablemaster @ 100 Amp/240V/60 cycle with 100’ cord and wireless remote ∞ Isolation transformer, 240V/24 KVA/100 Amp Shore Power with “smart Y” box

Switchboards, Load Banks & Control Panels ∞ Batteries, NORTHSTAR NSB 130: o 2 for generator and house o 8 for engines ∞ Two (2) battery chargers (60 Amp Charles Chargers) ∞ Panel, AC main selector – 240V in Pilothouse ∞ Panel, main distribution – AC in engine room ∞ Engines DC panel in engine room ∞ Standard E-Plex System

Wire and Cables ∞ All wire to approved specifications ∞ All cables marked with circuit number ∞ Wire chase runs throughout

ELECTRONICS

Alarms/Monitors ∞ Lazzara 64-channel ISIS 500 vessel monitoring system, including: ∞ Dynamic diagnostics

∞ Three (3) 20” LCD monitors at helm, (1) 19” LCD monitor in engine room ∞ ECM output from engine monitor/alarm electronics ∞ Generator systems alarm/monitoring ∞ Tank level readout and alarms ∞ Fire Zone Alarm for engine room ∞ Bilge Alarms and pump run indication ∞ Auto fire discharge alarm ∞ Volvo engine alarms ∞ Fire & carbon monoxide smoke detectors

Navigation and Communication

Radar ∞ FURUNO: NAVNET 3D processor ∞ FURUNO: DRS12A 12KW 72- mile Radar

Transceiver ∞ FURUNO: 6' Open Array Antenna Plotter / GPS/WAAS Sounder ∞ FURUNO: DFF1 Digital network BB Echosounder module

Instruments ∞ FURUNO: PB100 Ultrasonic weather station sensor

Autopilot ∞ SIMRAD: AP28EVC for Volvo IPS ∞ SIMRAD: AP28 second station

Satellite TV ∞ KVH: TRACVISION M5 US SAT TV system

Navigation and Communication (cont'd.)

CCTV ∞ ANIXTER: AXIS 215 Pan/Tilt/Zoom network cameras, engine room and aft deck

Satellite Weather ∞ FURUNO: NAVNET SIRIUS satellite weather

Communication ∞ Two (2) SIMRAD RS87 VHF, cradle mounted handset with two (2) repeaters

Cellular/Email/Internet ∞ Telular cell phone o Quad-Brand / Tri-Band

MAIN DECK OUTFITTING

Anchor and Anchor Handling ∞ Two (2) Anchors, 150 lbs., stainless steel polished ∞ Anchor chain storage in forepeak locker; 3/8 high strength – 100 ft. and 200 ft. ∞ Anchor pockets ∞ Anchor wash down spigot with hose ∞ 4000 lb Windlass, chain with controls

Deck Hardware ∞ Electric horn ∞ Windshield wiper system 24 vdc / pantograph type with washer system ∞ Lazzara custom 16" bow, spring and stern cleats, 316L stainless steel ∞ 8 cleats total, 2 pop-ups, 6 hawsers

Deck Hardware (cont'd.) ∞ 1 1/2" stainless steel 316L steel rails on main deck ∞ Burgee staff, custom stainless steel, with burgee flag ∞ Escape hatch for forward VIP ∞ Acrylic panel with stainless steel edge trim, LSX 92 logo, LED edge lit, port and starboard ∞ Lazzara Custom Yachts logo, stainless steel, port and starboard ∞ Bulwark boarding doors port and starboard ∞ Teak aft deck and swim platform deck ∞ Watertight hatch for anchor locker ∞ Watertight hatch for E/R escape

Doors and Hatches ∞ Weather-tight engine room access ∞ Crew access cabinet ∞ Foredeck access hatch ∞ Stainless steel aft main salon sliding door ∞ Electric window adjacent to main salon sliding door ∞ Aft garage door hydraulically actuated ∞ Sunroof, retractable, hydraulic

Port lights and Windows ∞ Continuous panoramic window system in hull-side at horizon level ∞ Main deck windows are tinted glass, laminated and chemically strengthened ∞ Helm windshield laminated and chemically strengthened ∞ Composite rub rails for forward hull-side windows ∞ Deck house skylights, port and starboard

Rails, Ladders and Gangways ∞ Stainless steel (316L) round hand rails on all exterior decks ∞ Boarding ladder with handrail ∞ Solid PVC rubrail with stainless steel insert ∞ Bulwark doors port and starboard

Storage Locker Foredeck ∞ Foredeck locker for line and fender storage ∞ Aft deck haunch lockers ∞ Aft sunpad lockers

MAIN DECK /TRANSOM OUTFITTING

Aft Deck ∞ Deck self-bailing ∞ Flooring, teak ∞ Lighting, indirect ∞ Crew access cabinet ∞ Teak steps, floating & angled towards center of platform ∞ Storage, haunches ∞ Wood Table in cockpit ∞ Speakers, overhead ∞ Overhead cockpit lights ∞ Low level courtesy lights ∞ Ships bell forward

∞ Large U shape seating with custom compression posts ∞ LSY logo engraved on 1/2" abrasion resistant acrylic panel with stainless steel frame – technology by Yachtsign ∞ One Docking Stations on Starboard side o Joystick control Volvo o Station transfer panels o Start/stop panels ∞ Waring winches, 24V electric, port and starboard

Aft Sport Deck ∞ Hydraulically operated garage door ∞ Garage to store owner provided tender and wave runner ∞ Fresh water inlet ∞ Cable TV/phone connection ∞ Retractable cleats for tender ∞ Shore power cord outlet

Bow Deck ∞ Forward seating group ∞ Wood Table ∞ Sun pad ∞ Storage

SPORTSBRIDGE

∞ Full Driving Console ∞ Three (3) 15" LCD Highbright monitors (daylight viewable) ∞ Map storage areas near console ∞ Captain's helm seat with topstitch ∞ Companion helm seat with topstitch

∞ Hatchway leading downwards to aft deck ∞ Carbon hardtop, mast and uprights with custom arch for electronics ∞ Sat TV and companion domes mounted aft on fly bridge custom winglets

MASTER STATEROOM

∞ Walk around Lazzara-size king bed with innerspring mattress ∞ Settee Lounge ∞ Ottoman ∞ One (1) storage cabinet ∞ Two (2) dressing bureaus starboard side with six (6) drawers each ∞ Veneered night stand, port and starboard, with wood tops and drawers/bureaus, port and starboard, with "soft close" drawers ∞ Upholstered loveseat starboard side ∞ Shades over panoramic windows ∞ Majilite overhead panels w/foam backing ∞ Majilite wall coverings, removable panels ∞ Two "Horizon" panoramic windows ∞ Window treatment ∞ Direct and indirect lighting ∞ Receptacles: 120 VAC duplex ∞ Decorative sconces

MASTER HEAD

∞ Vanity top with two (2) sinks ∞ Single lever lavatory faucets, polish chrome finish ∞ Medicine cabinet ∞ Flooring with a six (6) inch border ∞ Stone flooring with enclosed full size shower with seamless glass enclosure ∞ Headhunter marine toilet ∞ Towel bars, tissue holders, wall-mounted soap dishes and tumbler holders

∞ Contemporary shower set, polish chrome finish

∞ Exhaust fan ∞ Recessed warm white LED down lights ∞ Two 120 VAC duplex receptacles with ground fault breakers ∞ Linen closet ∞ Overhead low voltage warm white LED lighting ∞ Pull out clothes hamper ∞ Custom his/her closets on each side

PORT VIP STATEROOM

∞ Lazzara sliding twin-size beds with innerspring mattresses ∞ Headboard mirror ∞ Hanging locker with full-length mirrored door ∞ Nightstand with drawers ∞ Storage drawers under bed ∞ Carpet ∞ Majilite overhead panels with foam backing ∞ Blinds over window ∞ “Horizon” panoramic windows ∞ Direct and indirect lighting ∞ Receptacle: 120 VAC duplex

STARBOARD VIP STATEROOM

∞ Lazzara double-size bed with innerspring mattress ∞ Hanging locker with full-length mirrored door & custom headboard with mirror on aft wall ∞ Nightstand with drawers ∞ Storage drawers under bed ∞ Carpet ∞ Majilite overhead panels with foam backing

∞ Blinds over window ∞ “Horizon” panoramic windows ∞ Direct and indirect lighting ∞ Receptacle: 120 VAC duplex

PORT AND STARBOARD VIP HEADS

∞ Headhunter marine toilet ∞ Power vent fan ∞ Glass towel shelf with rails ∞ Storage, medicine cabinet ∞ Wood vanity top with vessel sink ∞ Stone flooring ∞ Contemporary shower set, polish chrome finish ∞ Single lever faucet in polish chrome ∞ Shower with seamless glass enclosure ∞ Wall mounted soap dish, tumbler and tissue holder ∞ 120 VAC duplex receptacles (GFI protected)

FORWARD VIP STATEROOM

∞ Full size bed with innerspring mattress ∞ Hanging locker ∞ Chain locker bulkhead with access ∞ Storage, cabinet with drawers and shelves ∞ 24V reading lights Halogen ∞ Lighting low voltage warm white LED ∞ Deck hatch/screen/blackout ∞ Carpet ∞ Storage under bed ∞ 120 VAC duplex receptacles ∞ Polish chrome fixtures

FORWARD VIP HEAD

∞ Stone flooring ∞ Lighting low voltage AC halogen ∞ Power vent fan, 24 volt ∞ Contemporary shower set, polish chrome ∞ Shower with seamless glass enclosure ∞ Headhunter marine toilet ∞ Storage, medicine cabinet ∞ Wood vanity with vessel sink ∞ Wall mounted soap dish, tumbler and tissue holder ∞ 120 VAC duplex receptacles (GFI protected)

CREW LOUNGE

∞ Settee ∞ Storage cabinet with drawers ∞ Overhead storage cabinets with refrigerator ∞ TV

TWO CREW STATEROOMS

∞ Access to engine room ∞ Access to main deck ∞ Bunk, lower with storage below ∞ Bunk, upper ∞ Flooring, carpet ∞ Lighting, low voltage warm white LED ∞ Outlets, 120V AC GFI protected ∞ Storage, drawers ∞ Starboard Stateroom with full size bed

CREW HEAD

∞ Headhunter marine toilet ∞ Shower and sink ∞ 120 VAC duplex receptacles (GFI protected) ∞ Storage locker

DAYHEAD (SALON)

∞ Wood vanity top and undermount sink ∞ Single lever faucet in polish chrome finish ∞ Headhunter marine toilet ∞ Mirror ∞ Wood flooring ∞ Storage

SALON

∞ Overhead lighting, LED ∞ Night light (1 red) ∞ Warm White LED ∞ High gloss wood interior ∞ Storage cabinets ∞ Wood flooring ∞ Port and Starboard custom sectionals upholstered in Ultra leather ∞ Hunter Douglas pleated shades ∞ Sunroof, retractable hydraulic ∞ Skylights in overhead, port and starboard ∞ Wet bar includes refrigerator with icemaker ∞ Two (2) bar stools ∞ Bar storage, cabinet with bottle and glass racks ∞ Coffee tables SALON (cont'd.)

∞ 120 vac duplex receptacles ∞ Two (2) rain gears locker ∞ Dining table with seating for eight

GALLEY/DINETTE

∞ Microwave/convection oven ∞ Designer range hood ∞ Stainless steel appliances ∞ Refrigerator with icemaker ∞ Wine chiller ∞ Trash compactor ∞ Dishwasher ∞ Silestone countertops ∞ Cook-top, recessed four-burner ∞ Coffee maker, Krups® ∞ Storage cabinets, upper and lower ∞ Settee with storage ∞ Custom dinette table with pedestal storage ∞ Glass serving area ∞ Lighting, indirect ∞ Wood plank flooring ∞ Two (2) barstools ∞ 120 VAC duplex receptacles (GFI protected) ∞ Stainless steel under mount sink with single lever faucet

FORWARD EQUIPMENT ROOM

∞ Fresh water system - filters ∞ Access to forward stairs ∞ Access to AC units ∞ Access to isolation transformer ∞ Lighting/storage available ∞ Black water overboard discharge valve and pump

LAUNDRY ROOM

∞ Miele side by side washer/dryer ∞ Linen closet

Flooring ∞ Salon: hardwood flooring ∞ Staterooms: carpet ∞ Dayhead: hardwood flooring ∞

Helm area: hardwood flooring ∞ Crew stateroom: Amtico flooring ∞ Master and VIP heads: Silestone ∞ Crew head: Amtico flooring ∞ Galley: wood flooring

OTHER

Manuals ∞ Lazzara Operational Technical manuals with as-built drawings ∞ Ship set of manufacturer's equipment manuals USCG and Boarding Equipment Package ∞ One (1) life raft 10 people (valise type) ∞ Ten (10) adult life jackets ∞ Two (2) children life jackets ∞ Complete USCG Package including first aid kit ∞ EPIRB ∞ Handheld VHF ∞ Boarding Ladder, six step, adjustable for tides

Water Delivery Kit ∞ Fuel oil filters for engines and genset ∞ Engine lube oil ∞ Five (5) fenders with covers and 1/2" braid line ∞ 3/4" dock lines with chafe guard and spliced eye, including 8 @ 40 ft. ea. ∞ 50' Telephone connection cable ∞ 100' Dockside water connection hose ∞ Deck plate keys ∞ Manual crank handle for winch ∞ Tackle box/miscellaneous electrical and plumbing fittings ∞ Custom designed prop puller ∞ Toolbox with comprehensive hand tool kit

*** Standard specifications for Lazzara LSY 95 above. VIRGIN has many upgrades so some specifications listed above may not be accurate.**

EXCLUSIONS Owners personal artwork and gear (list to be provided upon request)

Basic Information

Category: Motor Yacht

Model Year: 2014

Year Built: 2014

Country: United States

Fly Bridge: Yes

Dimensions

LOA: 95' 0" (28.96m)

LWL: 72' 0" (21.95m)

Min Draft: 5' 0" (1.52m)

Clearance: 20' 4" (6.20m)

Speed, Capacities and Weight

Cruise Speed: 25 Kts. (29 MPH)

Max Speed: 30 Kts. (35 MPH)

Displacement: 140000 Pounds

Water Capacity: 350 Gallons

Holding Tank: 250 Gallons

Fuel Capacity: 1700 Gallons

Accommodations

Total Cabins: 4

Total Berths: 8

Total Heads: 5

Captain Cabin: True

Crew Cabin: 2

Crew Berths: 2

Crew Heads: 1

Hull and Deck Information

Hull Material: Fiberglass

Deck Material: Fiberglass

Hull Color: Silver

Hull Finish: Polyethylene

Hull Designer: Dick Lazzara

Engine Information

Engines: 3

Manufacturer: Volvo

Model: IPS III 1200

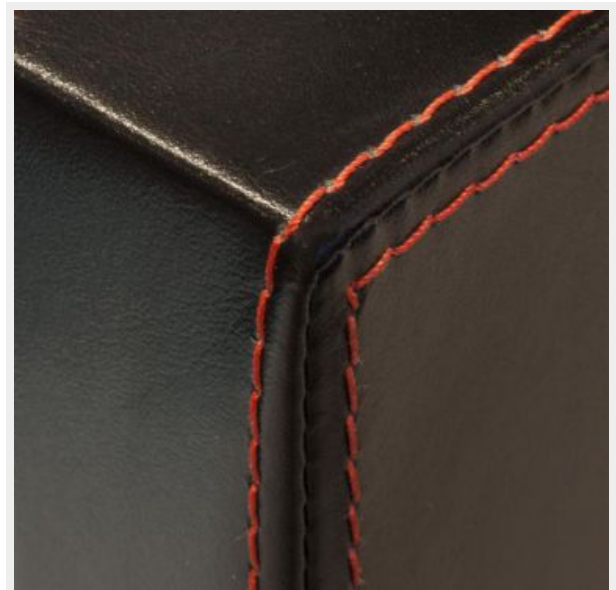
Engine Type: Inboard

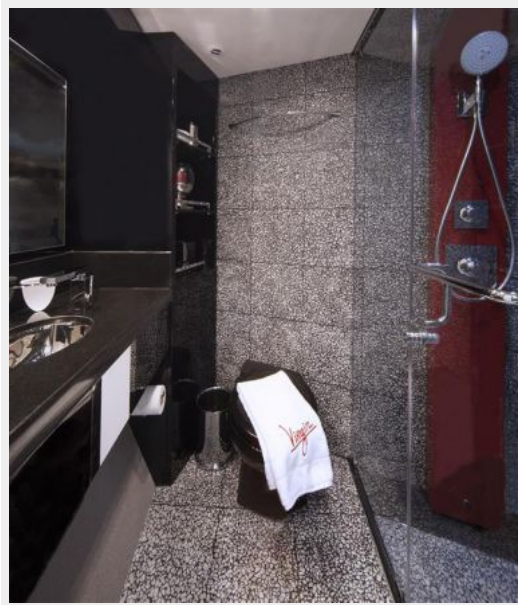
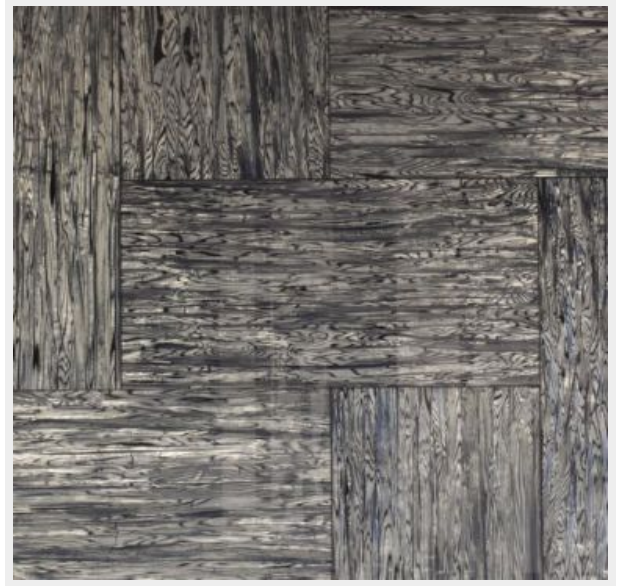
Fuel Type: Diesel

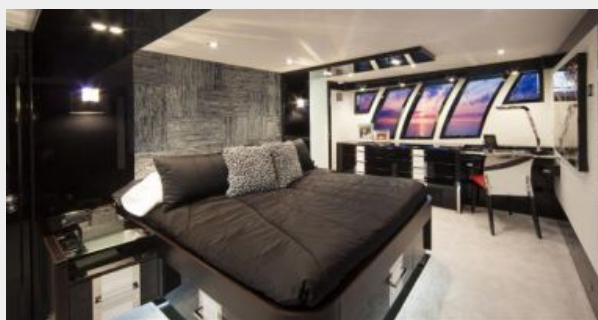
PHOTOS

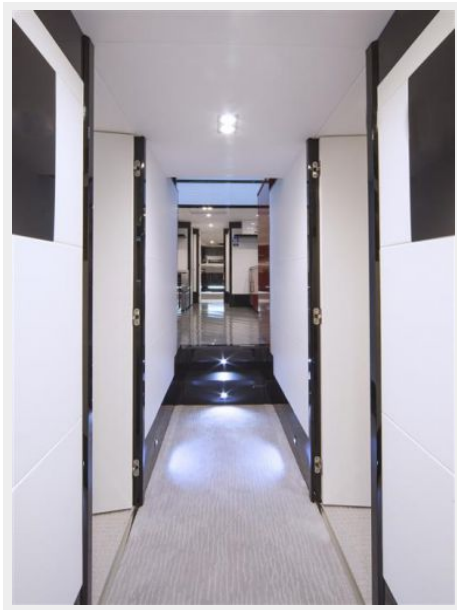




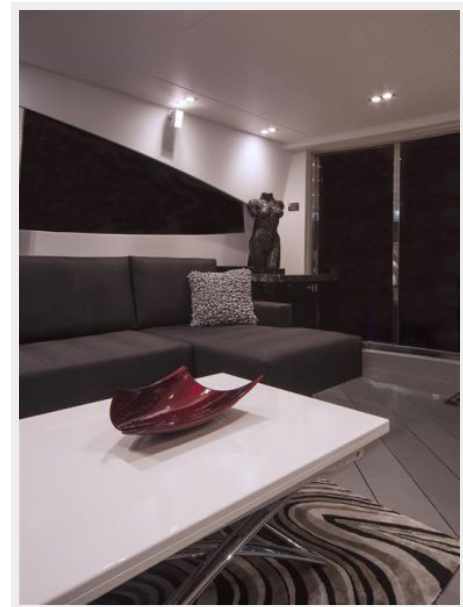


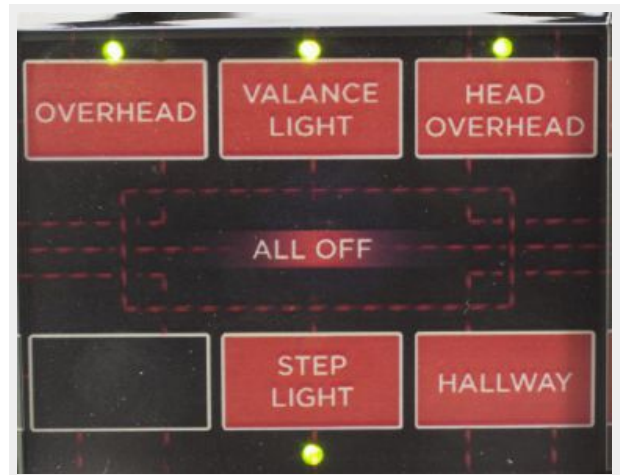


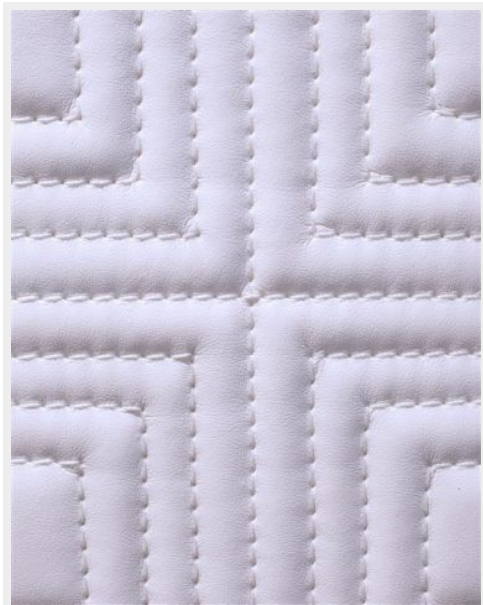
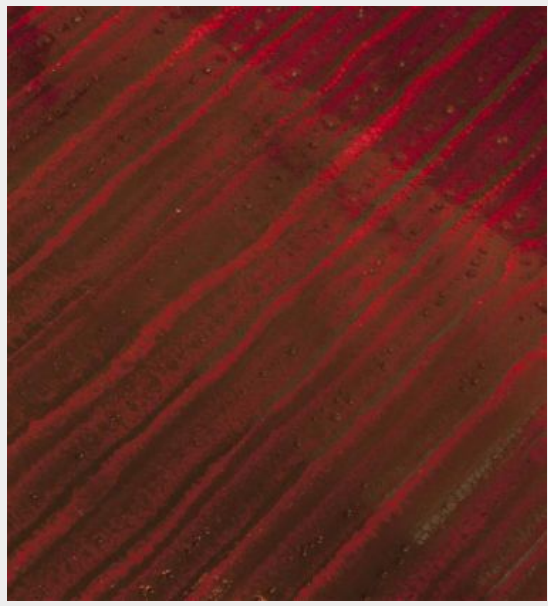


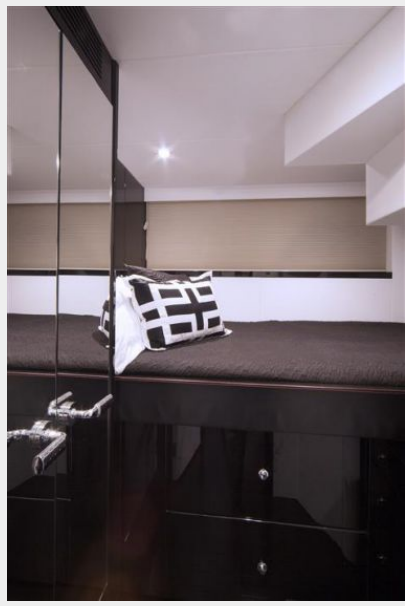




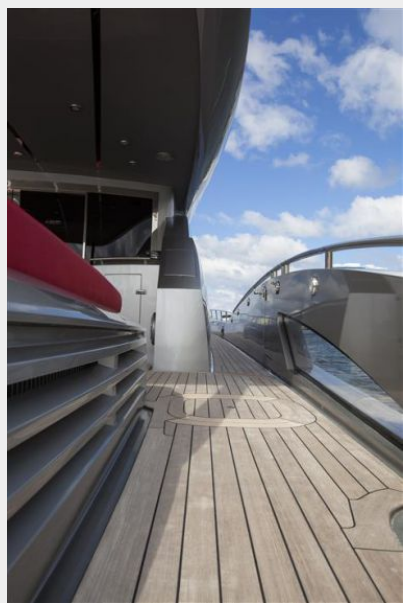


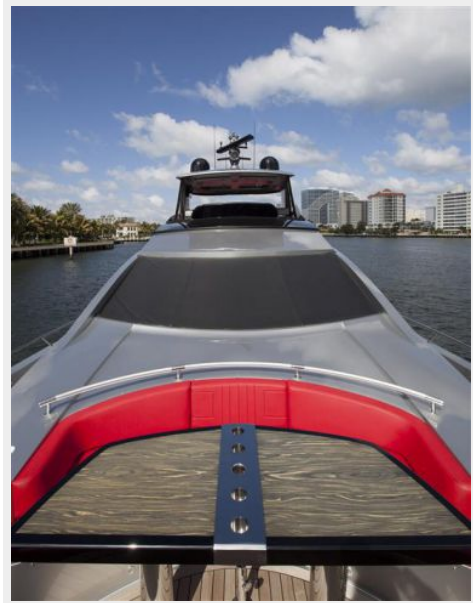




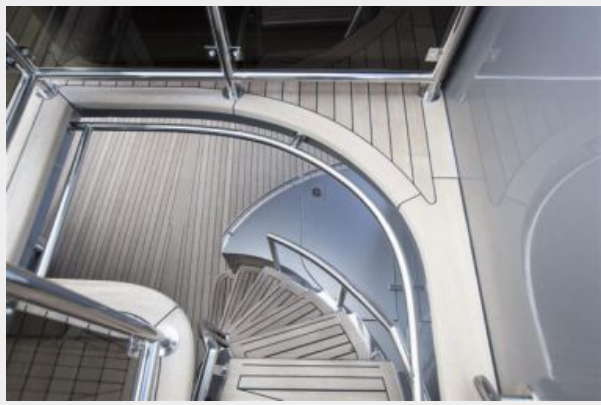
















CONTACTS

Andrey Shestakov, leading yacht broker of the sales department of Shestakov Yacht Sales Inc. Shestakov Yacht Sales Inc., the official representative of the Miami/Fort Lauderdale FL headquarters.

Contact details

Email: andrey@shestakovyachtsales.com

Web: shestakovyachtsales.com/en/

Telephones

USA: +1(954)274-4435

Office hours

Monday – Saturday: **9:00 - 21:00** EDT

Sunday: **closed**

Address



Harbour Towne Marina, 850 NE 3rd St,
STE 213, Dania, FL 33004