

## NO NAME — FORMULA



**Builder:** FORMULA

**Year Built:** 2004

**Model:** Cruiser

**Price:** PRICE ON APPLICATION

**Location:** United States

**LOA:** 37' 0" (11.28m)

**Beam:** 11' 9" (3.58m)

**Max Draft:** 2' 6" (0.76m)

Our experienced yacht broker, Andrey Shestakov, will help you choose and buy a yacht that best suits your needs **no name — FORMULA** from our catalogue. Presently, at Shestakov Yacht Sales Inc., we have a wide variety of yachts available on our sale's list. We also work in close contact with all the big yacht manufacturers from all over the world.

If you would like to buy a yacht **no name — FORMULA** or would like help answering any questions concerning purchasing, selling or chartering a yacht, please call **+1(954)274-4435**

---

# TABLE OF CONTENTS

---

TABLE OF CONTENTS	2
SPECIFICATIONS	3
Overview	3
Basic Information	4
Dimensions	4
Speed, Capacities and Weight	4
Accommodations	4
Hull and Deck Information	4
Engine Information	4
PHOTOS	5
CONTACTS	17
Contact details	17
Telephones	17
Office hours	17
Address	17

# SPECIFICATIONS

## Overview

Check out this beautiful Vessel

Taking all offers!!!!!!!

This is a beautiful, lift kept boat!

THIS BOAT DOES IT ALL: WITH SUPERIOR HIGH PERFORMANCE RIDE, GLAMOROUS CLASS, AND STYLE.

When you first enter the boat from the stern you see a great swim platform, you open the door to enter into the aft cabin on the portside of the vessel. It's very roomy. As you look around you will see the Helm, seating for 10 with two nice size tables to have drinks and snacks on.. Also, the entrance to the main cabin. Walking forward down to the plush cabin which is very roomy and comfortable like your own Living room. Looking around is your roomy modern Head, sink, shower, stove, couch, bed, everything you would need to stay for weeks on end. This is a lot of boat, for the money.

Everything on this boat is in new condition, just like a brand new boat. The boat is powered by

Mercruiser 496 mag WITH ONLY 170 hrs ON THE MOTOR. It also has a Power Engine Hatch for easy engine access. The Generator is Kohler 7.3 KW with only 40 hrs. A nice size 16,000 BTU A/C, keeps the cabin and upper deck cool. The Helm's Eletronics consists of Garmin Raymarine ST60 and a GPSMAP 5212 which was a great upgrade. This boat has all the right maintenance done. It also has Camper canvas, to protect the aft cabin from the sun and bugs. The bottom of the hull is fiberglass inboard V-Drive, that breaks the waves smoothly. There is plenty of storage and enough room for 10 guests.

This Boat won't last!

Additional Specs, Equipment and Information:

**Dimensions** LOA: 37 ft 0 in Beam: 11 ft 9 in Maximum Draft: 2 ft 6 in Bridge Clearance: 12 ft 3 in Headroom: 6 ft 7 in Dry Weight: 16500 lbs **Engines** Engine 1: Engine Brand: MERCURY Year Built: 2004 Engine Model: MERCUISER Engine Type: Inboard Engine/Fuel Type: Gas/Petrol Location: Starboard Engine Hours: 170 Engine Power: 496 HP Engine 2: Engine Brand: MERCURY Year Built: 2004 Engine Model: MERCUISER Engine Type: Inboard Engine/Fuel Type: Gas/Petrol Location: Port Engine Hours: 170 Engine Power: 496 HP **Tanks** Fresh Water Tanks: (55 Gallons) Fuel Tanks: (236 Gallons) Holding Tanks: (57 Gallons) **Accommodations** Number of cabins: 1 Number of heads: 1 **Electronics** Radio TV set GPS Compass **Inside Equipment** Refrigerator Air conditioning Heating Electric bilge pump Hot water **Electrical Equipment** Generator Shore power inlet

---

## Basic Information

---

**Category:** Cruiser

**Sub Category:** High Performance

**Model Year:** 2004

**Year Built:** 2004

**Country:** United States

---

## Dimensions

---

**LOA:** 37' 0" (11.28m)

**Beam:** 11' 9" (3.58m)

**Max Draft:** 2' 6" (0.76m)

**Clearance:** 12' 3" (3.73m)

---

## Speed, Capacities and Weight

---

**Displacement:** 16500 Pounds

**Water Capacity:** 55 Gallons

**Holding Tank:** 57 Gallons

**Fuel Capacity:** 236 Gallons

---

## Accommodations

---

**Total Cabins:** 1

---

## Hull and Deck Information

---

**Hull Material:** Fiberglass

---

## Engine Information

---

**Engines:** 2

**Manufacturer:** Mercury

**Model:** Mercruiser

**Engine Type:** Inboard

**Fuel Type:** Gas/Petrol

# PHOTOS





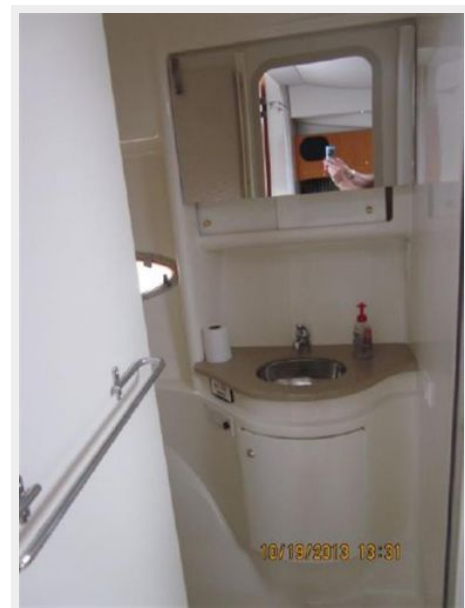








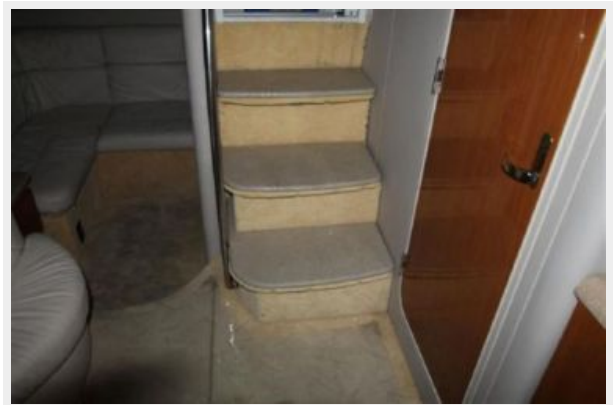








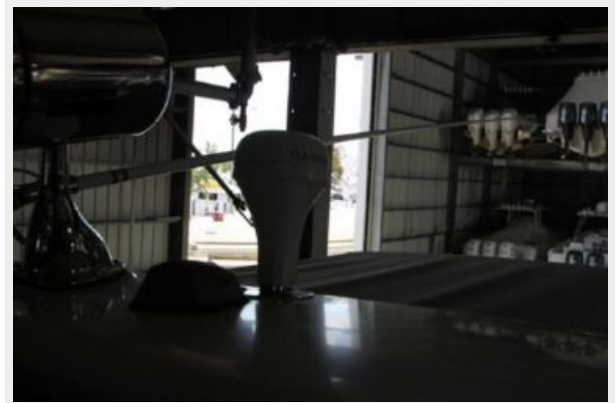












---

# CONTACTS

---

Andrey Shestakov, leading yacht broker of the sales department of Shestakov Yacht Sales Inc. Shestakov Yacht Sales Inc., the official representative of the Miami/Fort Lauderdale FL headquarters.

---

## Contact details

---

Email: [andrey@shestakovyachtsales.com](mailto:andrey@shestakovyachtsales.com)

Web: [shestakovyachtsales.com/en/](http://shestakovyachtsales.com/en/)

---

## Telephones

---

USA: +1(954)274-4435

---

## Office hours

---

Monday – Saturday: **9:00 - 21:00** EDT

Sunday: **closed**

---

## Address

---



Harbour Towne Marina, 850 NE 3rd St,  
STE 213, Dania, FL 33004