

BREAD — KANTER



Судостроитель: KANTER

Год постройки: 2007

Модель: Моторная яхта

Цена: **ЦЕНА ЯХТЫ ПО ЗАПРОСУ**

Местонахождение: United States

Длина общая: 137' 0" (41.76m)

Ширина: 23' 0" (7.01m)

Мин. осадка: 5' 0" (1.52m)

Макс. осадка: 8' 0" (2.44m)

Крейс. скорость: 10 Kts. (12 MPH)

Макс. скорость: 12 Kts. (14 MPH)

Купить **BREAD — KANTER** а также выбрать подходящую вам яхту из нашего каталога яхт вам поможет опытный яхтенный брокер Андрей Шестаков. На сегодняшний день компания **Shestakov Yacht Sales Inc.** имеет большое количество яхт в собственном списке продаж, а также тесно сотрудничает со всеми крупными яхтенными производителями по всему миру.

Для того чтобы купить яхту **BREAD — KANTER** а также проконсультироваться по любому вопросу связанному с покупкой, продажей, чартером яхт позвоните по телефону **+7(918)465-66-44**.

ОГЛАВЛЕНИЕ

ОГЛАВЛЕНИЕ	2
ХАРАКТЕРИСТИКИ	5
Основная информация	5
Размеры	5
Скорость, вместимость и масса	5
Размещение	5
Корпус и палуба	5
Информация о двигателе	6
ПОДРОБНОЕ ОПИСАНИЕ	7
Accommodations	7
Electronics	8
Entertainment	8
Engine Room	8
Tankage	9
Deck Equipment	9
Galley	9
Tenders	9
Broker's Comment	9
Исключения	10
Отказ от ответственности	10
ФОТОГРАФИИ	11
Main Salon	11
Main Salon	11
Galley	11
Main Salon	11
Galley	11
Galley	11
Dining	12

Dining	12
Pilothouse	12
Dining	12
Companionway	12
Master Stateroom	12
Master Head	13
Master Head	13
VIP Stateroom	13
VIP Stateroom	13
Guest Stateroom	13
Guest Stateroom	13
Crew Lounge	14
Crew Lounge	14
Captain's Cabin	14
Crew Head	14
Crew Cabin	14
Upper Deck	14
Upper Lounge	15
Upper Deck	15
Upper Deck	15
Upper Deck	15
Upper Deck	15
Upper Deck	15
Upper Deck	15
Upper Deck	16
Engine Room	16
КОНТАКТЫ	17
Контактная информация	17
Телефоны	17
Время работы	17

Адрес

17

ХАРАКТЕРИСТИКИ

Основная информация

Тип судна: Моторная яхта

Подкатегория: Classic

Модельный год: 2007

Год постройки: 2007

Год обновления: 2012

Страна: United States

Размеры

Длина общая: 137' 0" (41.76m)

Длина по ватерлинии: 149' 0" (45.42m)

Длина палубы: 137' 0" (41.76m)

Ширина: 23' 0" (7.01m)

Мин. осадка: 5' 0" (1.52m)

Макс. осадка: 8' 0" (2.44m)

Скорость, вместимость и масса

Крейс. скорость: 10 Kts. (12 MPH)

Дальность на крейсерской скорости:
2500

Макс. скорость: 12 Kts. (14 MPH)

Вместимость воды: 2000 Gallons

Вместимость сточного бака: 750 Gallons Объем топливного бака: 6600 Gallons

Размещение

Всего кают: 4

Спальные места: 8

Корпус и палуба

Материал корпуса: Aluminum

Материал палубы: Teak

Дизайнер интерьера: Annie Santulli

Информация о двигателе

Двигатели: 2

Производитель: Caterpillar

Модель: C - 18

Тип топлива: Diesel

ПОДРОБНОЕ ОПИСАНИЕ

Accommodations

BREAD offers an opportunity to own a real headturner regardless of the cruising grounds. She is unique in her styling and at the same time offers an incredible live-aboard experience with her spacious and well-appointed interior layout and design. One can enter BREAD from her aft passerelle, where you are immediately welcomed into her massive aft deck. This area is a great area for dining, or gathering for cocktails and conversation as one enjoys the beautiful views from her large windows that surround her aft deck. Forward of the aft deck is the galley, large enough to hold several onlookers while the chef prepares meals using the best appliances available. The galley is set up with a center island for preparation or serving. There is ample counter and cabinet space to store and work as needed. Moving forward from the galley, the main salon opens up with large windows offering an unsurpassed view of the surroundings, and finished with the same raised panel joinery and exquisite décor. A curved staircase in the aft starboard side leads to the upper deck and boat deck area. On the forward end of the salon another set of stairs leads to the Pilothouse, with a similar set accessing the engine room and crew quarters. Also found as one enters the main salon is large a well-appointed day toilet. The Master and Guest staterooms are accessed via a spiral staircase located on the starboard aft side of the main salon. Located off a foyer, the Master is aft with center-line king bed, walk-in closet and his and her marble bath. A VIP is just off the foyer to port, with king berth and ensuite bath. Two guest staterooms are located forward, both with king size beds and ensuite baths. These rooms all feature raised panel joinery and curved panels in a highly finished teak. Forward of the salon is the Pilothouse, with full instrumentation, helm chairs and U-shaped settee for viewing while underway. This is a cozy, but well laid out area with all the equipment and instrumentation a Captain could ever want. Crew Quarters are below the Pilothouse and consist of three staterooms with upper/lower berth arrangements forward. The large Captain's cabin is also found in the area. All cabins have ensuite heads. There is a very generous crew galley and crew lounge in this area as well. This area also provides access to the engine room. The engine room is well laid out with all new equipment installed during her refit. Mains are 2011 with generators and other equipment replaced 2012. One can reach the boat deck from inside by going up a beautiful stairwell that lands in the upper deck lounge. The lounge is an excellent spot to have a nice quiet conversation, curl up with a book or watch TV. The large windows make this area an advantage point for viewing any and all outdoor activity all the while staying in a dry and climate control area. The aft doors from the upper lounge open to the aft deck seating and Jacuzzi area. The boat deck in keeping with the style of the yacht contains a 26' custom built Hacker Craft. A knuckle crane, capable of launching the tender either side of the vessel, is hidden away in the stack to be completely concealed so not to take away from her lines or to clutter up the spacious deck area. The aft upper deck also offers a sitting and dining area with a barbecue for cooking the catch of the day, all protected from wind to the upper lounge location. There is a Jacuzzi found on the aft portion of the deck surrounded with sun pas as well as additional seating areas.

Electronics

- Furuno NavNet 3D
- Furuno DRS12A 12KW radar, w/4' open array
- Nobeltec Passport
- VEI 17' LED pilothouse display VEI 17' touchscreen display
- Stealth Navigation PC
- Furuno DDF Digital depth with 1000W transducer
- Simrad autopilot
- Garmin AIS Marine VHF
- Furuno VHF
- KVH Trackvison
- KVH Tracphone V7 system
- Panasonic PBX phone system
- Trendnet Wireless Super G outdoor access point
- Digital 70db wireless cell repeater
- Digital Global Antenna
- Gemeco PB200 weather station
- Garmin GM10 wind sensor
- ACR SART transponder
- ACR survival craft VHF
- Furuno AIS transponder
- Carlisle and Finch 45 million candlepower spotlight
- Furuno Felcom15 C Satcom
- Kahlenberg fog signal timer and whistle control
- Kahlenberg air horn with air stream whistle

Entertainment

- Crestron complete system with remotes
- Rotel Home Theater System
- Samsung LED TV's through-out
- Kaleidescape System

Engine Room

- Caterpillar C-18 575 hp, new 2011
- 2x Northern Lights 99kW generators, new 2012
- Naiad Model 16, 60 hp stern thruster
- Naiad Model 20, 75 hp bow thruster
- Naiad Model 521 Zero Speed stabilizers
- Hydraulic PTO System with (2) displacement pumps for main engine, PTO's and backup

- New air conditioning system, 2016

Tankage

Fuel: 6,500 US gals. Water: 2,000 US gals. Grey water: 750 US gals. Holding: 750 US gals.
Fuel consumption: 21 GPH at 10 kts (plus generators) allowing a range of 2,500NM

Deck Equipment

- Hydraulic Passarelle 20.25' extended length
- Hydraulic low profile Knuckle boom yacht crane, (stores in stack)
- Hydraulic windlass

Galley

- Sub Zero drawer refrigerators
- Sub Zero upright refrigerator
- Kitchen Aid refrigerator
- Sub Zero ice maker
- Breeze Air freezer
- Sub Zero wine chiller
- Gaggenau dishwasher 5-burner
- Thermador cooktop
- Wolfe double ovens
- Zephyr trash compactor

Tenders

- 26' Hackercraft, 2012
- 22' Nautica with Yamaha 250 4-stroke

Broker's Comment

Never has there been such a unique vessel both in terms of design and build/refit execution. She offers the best in layout, finish woodwork and equipment. She offers the opportunity to own a very special live aboard experience, cruise any coast or charter should you desire to do so. BREAD would be celebrated in every harbor she enters as a yacht with tradition and style all the while equipped and finished like a new yacht.

Исключения

При продаже яхты исключаются личные вещи владельца.

Отказ от ответственности

Компания предоставляет описание судна или яхты добросовестно, но не может гарантировать точность этой информации, а также не ручается за техническое состояние. Покупатель должен проинструктировать своих агентов или оценщиков исследовать представленную информацию более подробно, по собственному желанию. Продажа судна или яхты, изменение цены или снятие с продажи будет происходить без предварительного уведомления.

ФОТОГРАФИИ

Main Salon



Main Salon



Main Salon



Galley



Galley



Galley



Dining



Dining



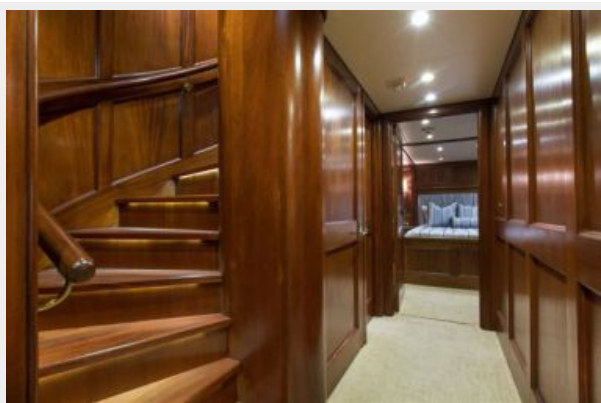
Dining



Pilothouse



Companionway



Master Stateroom



Master Head



Master Head



VIP Stateroom



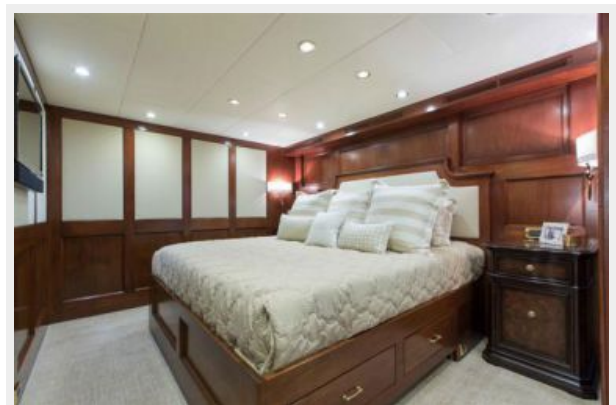
VIP Stateroom



Guest Stateroom



Guest Stateroom



Crew Lounge



Crew Lounge



Captain's Cabin



Crew Head



Crew Cabin



Upper Deck



Upper Lounge



Upper Deck



Upper Deck



Upper Deck



Upper Deck



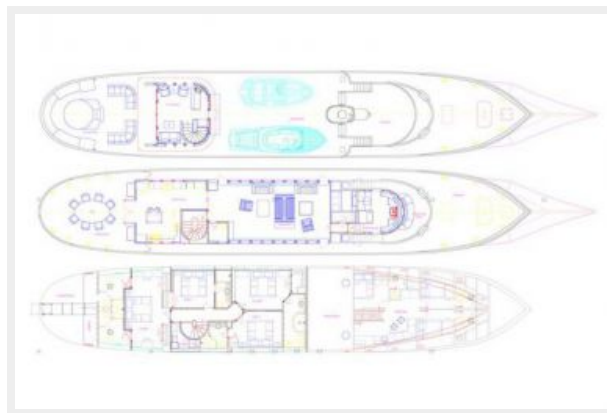
Upper Deck



Upper Deck



Engine Room



КОНТАКТЫ

Андрей Шестаков (Andrey Shestakov) – ведущий яхтенный брокер отдела продаж яхт и судов компании Shestakov Yacht Sales Inc. Официальный представитель Shestakov Yacht Sales Inc. для русскоговорящих клиентов в центральном офисе компании в Майами/Форт Лодердейл/Флорида/США.

Контактная информация

Email: andrey@shestakovyachtsales.com

Web: shestakovyachtsales.com

Телефоны

Краснодарский край: **+7(918)465-66-44**

США, Майами, Флорида: **+1(954)274-4435**

Время работы

Понедельник – Суббота: **9:00 - 21:00**
EDT

Воскресенье: **Закрито**

Адрес



Harbour Towne Marina, 850 NE 3rd St,
STE 213, Dania, FL 33004