

OUR TRADE — MERIDIAN



Судостроитель: MERIDIAN

Год постройки: 2013

Модель: Моторная яхта

Цена: **ЦЕНА ЯХТЫ ПО ЗАПРОСУ**

Местонахождение: United States

Длина общая: 44' 0" (13.41m)

Ширина: 14' 3" (4.34m)

Макс. осадка: 3' 1" (0.94m)

Крейс. скорость: 24 Kts. (28 MPH)

Макс. скорость: 32 Kts. (37 MPH)

Купить **OUR TRADE — MERIDIAN** а также выбрать подходящую вам яхту из нашего каталога яхт вам поможет опытный яхтенный брокер Андрей Шестаков. На сегодняшний день компания **Shestakov Yacht Sales Inc.** имеет большое количество яхт в собственном списке продаж, а также тесно сотрудничает со всеми крупными яхтенными производителями по всему миру.

Для того чтобы купить яхту **OUR TRADE — MERIDIAN** а также проконсультироваться по любому вопросу связанному с покупкой, продажей, чартером яхт позвоните по телефону **+7(918)465-66-44**.

ОГЛАВЛЕНИЕ

| | |
|-------------------------------|----|
| ОГЛАВЛЕНИЕ | 2 |
| ХАРАКТЕРИСТИКИ | 5 |
| Обзор | 5 |
| Основная информация | 6 |
| Размеры | 6 |
| Скорость, вместимость и масса | 6 |
| Размещение | 6 |
| Корпус и палуба | 6 |
| Информация о двигателе | 7 |
| ПОДРОБНОЕ ОПИСАНИЕ | 8 |
| Standard Features | 8 |
| Interior Salon | 8 |
| Electronics | 9 |
| Engine Room and Mechanical | 9 |
| Exterior and Cockpit | 9 |
| Исключения | 10 |
| Отказ от ответственности | 10 |
| ФОТОГРАФИИ | 11 |
| Salon | 11 |
| Salon | 11 |
| Salon | 11 |
| Salon | 11 |
| Salon | 11 |
| Dinette | 11 |
| Galley | 12 |
| Master Stateroom | 12 |
| Master Stateroom | 12 |
| Master Stateroom | 12 |

| | |
|---------------------------|----|
| Master Stateroom - Closet | 12 |
| Master Head | 12 |
| Aft Stateroom | 13 |
| Aft Stateroom | 13 |
| Aft Stateroom TV | 13 |
| Aft Stateroom Vanity | 13 |
| Guest Head | 13 |
| Helm | 13 |
| Helm Seating | 14 |
| Helm Seating | 14 |
| Engine Room Access | 14 |
| Engine Room Ladder | 14 |
| Engine Room | 14 |
| Engine Room | 14 |
| Engine Room | 15 |
| Engine Room | 15 |
| Engine Room | 15 |
| Engine Room | 15 |
| Engine Room | 15 |
| Engine Room | 15 |
| Engine Room | 15 |
| Engine Room | 16 |
| Flybridge | 16 |
| Molded-In-Steps | 16 |
| Flybridge | 16 |
| Bow | 16 |
| Cockpit | 16 |
| Forward Deck | 17 |
| Profile | 17 |
| Profile | 17 |

| | |
|-----------------------|----|
| Profile | 17 |
| Profile | 17 |
| Profile | 17 |
| Profile | 18 |
| Profile | 18 |
| Profile | 18 |
| Profile | 18 |
| Profile | 18 |
| Profile | 18 |
| Profile | 18 |
| Profile | 19 |
| Profile | 19 |
| КОНТАКТЫ | 20 |
| Контактная информация | 20 |
| Телефоны | 20 |
| Время работы | 20 |
| Адрес | 20 |

ХАРАКТЕРИСТИКИ

Обзор

This is your chance to own a late model lightly used Meridian. Exceptionally cared for and recently surveyed, this boat is ready for a new home!

Passport Premier Extended Warranty good through November 14th, 2019!!

Zeus Pod Drive Joystick Handling

SKYHOOK POSITIONING SYSTEM

Upgraded Electronics

185 LOW HOURS!!

Capitalize on the rare opportunity to own a late model dealer trade in! Meridian is known for maximizing their volume on yachts, and this beautiful late model 441 is no exception. From the moment you step onto the molded in nonskid swim platform, you will feel like you are on a much bigger yacht. The platform with fold out swim ladder is perfect for any water recreational activity, and easy to tie up and dock from. As you enter the aft deck, you will notice the overhead ceiling for the flybridge. This provides much needed shade in the summer and flood lighting at night. There is enough room for 6 adults to sit comfortable with fold out chairs, and access to a large engine room and storage. Nonskid decks and high handrails lead you up each side to the large bow for sunbathing.

One feature Meridian is known for is the molded in steps to the flybridge. This is a nice and safer change from most with wooden ladders. Once on the bridge, the captain has total command of the boat whether they are docking with the joystick, holding the boat easily in position with skyhook or running offshore cruising on autopilot. Strata-glass enclosure and bridge air conditioning will allow all the guest to enjoy this area comfortably during the summer months. The space for the bridge for seating is exceptionally laid out for entertaining.

Making your way into the main salon through a sliding glass door, you will notice comforting carpet throughout and hardwood flooring in the galley. A flexsteel sofa is to starboard with coffee table, and two bucket seats to port. The elevated galley allows separation from the salon, but still close enough to engage in conversation. Dark corian countertops, stainless steel sink, large refrigerator and freezer with modern appliances complete the spacious galley. The large two stateroom layout is just down a few steps forward, with either of them offering the size of a master with comfortable queen size berths, and two head compartments. Ample storage and natural lighting, large berths and privacy add to the comforts of this beautiful 441.

Select trades considered

Основная информация

Тип судна: Моторная яхта**Подкатегория:** Flybridge**Модельный год:** 2013**Год постройки:** 2013**Страна:** United States**Открытая палуба мостика:** Да

Размеры

Длина общая: 44' 0" (13.41m)**Ширина:** 14' 3" (4.34m)**Макс. осадка:** 3' 1" (0.94m)

Скорость, вместимость и масса

Крейс. скорость: 24 Kts. (28 MPH)**Макс. скорость:** 32 Kts. (37 MPH)**Водоизмещение:** 31223 Pounds**Вместимость воды:** 150 Gallons**Вместимость сточного бака:** 55 Gallons**Объем топливного бака:** 432 Gallons

Размещение

Всего кают: 2**Всего коек:** 3**Спальные места:** 6**Всего ком. состава:** 2

Корпус и палуба

Материал корпуса: Fiberglass**Цвет корпуса:** White**Дизайнер корпуса:** Meridian

Информация о двигателе

Двигатели: 2

Производитель: Cummins

Модель: QSB 5.9

Тип двигателя: Inboard

Тип топлива: Diesel

ПОДРОБНОЕ ОПИСАНИЕ

Standard Features

- 50-amp 50' Shore power cord
- Blue LED courtesy lights exterior
- Companionway door to bridge
- Compass
- Convection Microwave
- ST60 Depth sounder
- Digital tank monitoring system
- Digital throttle and shift controls with Synchronizer
- Engine room fire suppression system
- Four large bonded hull-side windows in guest stateroom
- Freshwater washdown fore and aft
- Full height AC/DC refrigerator with freezer
- Hardwood floors in galley
- Helm and seat covers
- Large custom table with sun lounge conversion
- LED Television with DVD/AM/FM/CD and Sirius capabilities
- LG Hausys HI-MACS solid surface countertops
- Opening salon windows
- Quick windlass
- Rolling screen cover for salon window
- Spotlight
- Stainless steel anchor roller with concealed anchor line locker and fender storage
- Stainless steel frames on portlights
- Standard queen size berth with inner spring mattress
- U-Shaped dinette with filler cushions
- Vacuflush head system
- Vanity with flip top mirror and stool
- Vessel View bridge display
- Windshield cover

Interior Salon

- Central-vac system
- DTS electronic controls w/ electric engine synchronizer
- Four-zone air conditioning with reverse-cycle heat 18,000 BTU (2)/10,000 BTU (1)/6,000 BTU (1) includes 50-amp 240V dockside inlet
- Guest stateroom entertainment system (19" LCD TV with DVD)
- Interior cabinetry, carpet and countertop color options

- Interior carpet runners
- Dark interior wood finish
- Linen package
- Master stateroom entertainment system (19" LCD TV w/12V AM/FM/CD/DVD and speakers)
- Flexsteel pullout sofa in Salon
- Remote, universal
- Reverse sliding entry door
- Salon ice maker
- Washer/dryer (combomatic)-in mid-stateroom
- Twin hullside windows
- Oversized utility room
- Two island berths
- Sitting area with vanity in second stateroom
- Two-head layout

Electronics

- Raymarine E-127 Touch screen Chartplotter/GPS/Radar
- Raymarine Digital Depth
- Garmin 7212 Touchscreen Chartplotter
- Ray240 International VHF
- Intellion SAT TV system
- Autopilot

Engine Room and Mechanical

- Twin VD480 QSB DTS Cummins® electronic diesels
- Twin Zeus QSB 480-HO diesels
- 220V/50Hz electrical configuration
- Engine oil-change system and fuel-transfer pump
- Overboard discharge with macerator
- Coolair®: includes 13.5 genset upgrade and (2) 16,000 BTU units
- Glendinning cablemaster

Exterior and Cockpit

- Anchor, polished stainless steel (45-pound with 30' chain and 150' line)
- Antenna, TV
- Bimini & enclosures for bridge & cockpit
- Bow rail, split

- Bridge A/C
- Bridge hardtop
- Polycarbonate enclosures
- Bridge/cockpit TV
- Bridge grill
- Bridge refrigerator-12V
- Bridge stereo system (AM/FM CD Sirius® stereo, bridge and cockpit remote and 4 exterior speakers)
- Bridge television 19" LCD w/DVD
- Cockpit speakers, Clarion®
- Exterior carpet
- Exterior seating: Linen Sesame/Sunbrella® accents
- Foredeck sunpad
- Full-bridge hardtop, with Isinglass enclosure and exterior carpet
- Hard polycarbonate enclosure (w/ hardtop)
- Raw-water washdown (fore and aft)
- SeaPack® (safety gear)
- Transom lights, underwater
- Yacht flag and flag pole

Исключения

При продаже яхты исключаются личные вещи владельца.

Отказ от ответственности

Компания предоставляет описание судна или яхты добросовестно, но не может гарантировать точность этой информации, а также не ручается за техническое состояние. Покупатель должен проинструктировать своих агентов или оценщиков исследовать представленную информацию более подробно, по собственному желанию. Продажа судна или яхты, изменение цены или снятие с продажи будет происходить без предварительного уведомления.

ФОТОГРАФИИ

Salon



Salon



Salon



Salon



Salon



Dinette



Galley



Master Stateroom



Master Stateroom



Master Stateroom



Master Stateroom - Closet



Master Head



Aft Stateroom



Aft Stateroom



Aft Stateroom TV



Aft Stateroom Vanity



Guest Head



Helm



Helm Seating



Helm Seating



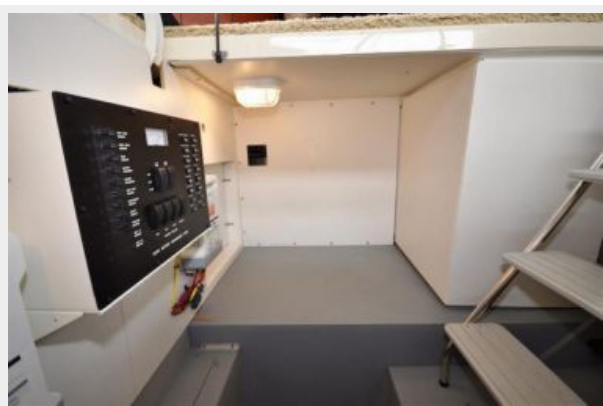
Engine Room Access



Engine Room Ladder



Engine Room



Engine Room



Engine Room



Engine Room



Engine Room



Engine Room



Engine Room



Engine Room



Engine Room



Flybridge



Molded-In-Steps



Flybridge



Cockpit



Bow



Forward Deck



Profile



Profile



Profile



Profile



Profile



Profile



Profile



Profile



Profile



Profile



Profile



Profile



Profile



КОНТАКТЫ

Андрей Шестаков (Andrey Shestakov) – ведущий яхтенный брокер отдела продаж яхт и судов компании Shestakov Yacht Sales Inc. Официальный представитель Shestakov Yacht Sales Inc. для русскоговорящих клиентов в центральном офисе компании в Майами/Форт Лодердейл/Флорида/США.

Контактная информация

Email: andrey@shestakovyachtsales.com

Web: shestakovyachtsales.com

Телефоны

Краснодарский край: **+7(918)465-66-44**

США, Майами, Флорида: **+1(954)274-4435**

Время работы

Понедельник – Суббота: **9:00 - 21:00**
EDT

Воскресенье: **Закрето**

Адрес



Harbour Towne Marina, 850 NE 3rd St,
STE 213, Dania, FL 33004