

MARES — FAIRLINE



Судостроитель: FAIRLINE

Год постройки: 2012

Модель: Моторная яхта

Цена: **ЦЕНА ЯХТЫ ПО ЗАПРОСУ**

Местонахождение: Peru

Длина общая: 78' 0" (23.77m)

Ширина: 18' 8" (5.69m)

Макс. осадка: 5' 3" (1.60m)

Купить **Mares — FAIRLINE** а также выбрать подходящую вам яхту из нашего каталога яхт вам поможет опытный яхтенный брокер Андрей Шестаков. На сегодняшний день компания **Shestakov Yacht Sales Inc.** имеет большое количество яхт в собственном списке продаж, а также тесно сотрудничает со всеми крупными яхтенными производителями по всему миру.

Для того чтобы купить яхту **Mares — FAIRLINE** а также проконсультироваться по любому вопросу связанному с покупкой, продажей, чартером яхт позвоните по телефону **+7(918)465-66-44**.

ОГЛАВЛЕНИЕ

ОГЛАВЛЕНИЕ	2
ХАРАКТЕРИСТИКИ	5
Обзор	5
Основная информация	5
Размеры	5
Скорость, вместимость и масса	5
Размещение	5
Корпус и палуба	6
Информация о двигателе	6
ПОДРОБНОЕ ОПИСАНИЕ	7
Decks	7
Electrical	7
Engine Room	8
Hull Design and Build	8
Flybridge and Second Helm Position	8
Исключения	9
Отказ от ответственности	9
ФОТОГРАФИИ	10
L-Shaped Sofa Salon	10
Salon View	10
Salon Entertainment Center	10
Glassware Storage	10
Bang and Oulfsen Premium Sound Cneter	10
Ban and Oulfsen Speakers	10
Like-new Carpet	11
Galley	11
Master Sofa	11
Master Stateroom	11

Master	11
Master Desk	11
Master Walk-in Closet	12
Master Large Windows	12
Master Safe Location	12
Master Shower	12
Master Sink & Vanity	13
Master Head	13
Guest Stateroom	13
Guest TV	13
Guest Head	13
VIP Stateroom	13
Guest Shower	14
VIP Vanity	14
Side Port Door	14
Lower Helm	14
Starboard Side Door	14
Helm Console	14
Electronics	15
Starboard Bow	15
Bow	15
Port Side View	15
Bow Looking Forward	15
Bow Cushions	15
Bow Looking Aft	16
Port Side Deck	16
Access Steps to Flybridge	16
Aft Deck View	16
Fairline Davit	16

Upper Helm	16
Upper Helm Thruster Controls	17
upper HEIm Seating	17
Flybridge View Forward	17
Flybridge View Aft	17
Flybridge Grill	17
Flybridge Icemaker	17
Liferaft	18
Flybridge Refrigerator	18
Flybridge Chill Box	18
KVH SAT TV	18
Port Engine	18
Engine Room	18
Starboard Engine	19
Bottom Job	19
Bottom Job	19
Running Gear	19
Haul Out	19
КОНТАКТЫ	20
Контактная информация	20
Телефоны	20
Время работы	20
Адрес	20

ХАРАКТЕРИСТИКИ

Обзор

This 2012 78' Fairline Squadron remains in as outstanding condition from the first day her owner took delivery new. Powered by Twin CAT 32A engines and approx. 750 hours, this yacht is loaded with many extras such as an extra fuel tank capacity, tender, Sea-Doo PWC with factory Installed hydraulic crane and chocks, master stateroom with walk-in closet, granite countertops in an open galley layout, flybridge bar with grill, and hydraulic swim platform. Extended warranty available on CAT engines. Recent full detail and bottom paint "Mares" is turnkey, ready for cruising your waters! Call for Details Today!!

Основная информация

Тип судна: Моторная яхта

Подкатегория: Pilothouse

Модельный год: 2012

Год постройки: 2012

Страна: Peru

Открытая палуба мостика: Да

Кубрик: Да

Размеры

Длина общая: 78' 0" (23.77m)

Длина по ватерлинии: 79' 11" (24.36m)

Ширина: 18' 8" (5.69m)

Макс. осадка: 5' 3" (1.60m)

Скорость, вместимость и масса

Водоизмещение: 123914 Pounds

Вместимость воды: 301 Gallons

Объем топливного бака: 775 Gallons

Размещение

Всего кают: 4

Всего ком. состава: 3

Корпус и палуба

Материал корпуса: Fiberglass

Информация о двигателе

Двигатели: 2

Производитель: Caterpillar

Модель: C32

Тип двигателя: Inboard

Тип топлива: Diesel

ПОДРОБНОЕ ОПИСАНИЕ

Decks

- Teak-laid cockpit floor and bathing platform
- Access hatch to engine bay
- Service corridor accessed via cockpit and transom door
- Warp and fender stowage lockers Various cockpit lockers
- Hydraulic transom door to bathing platform exposing concealed 3.5m telescopic hydraulic passerelle
- Solid teak handrail surround
- Stainless steel framed door to saloon
- Teak stairway with stainless steel handrails to flybridge
- Low-level lights and lights under flybridge overhang
- Removable stainless guardrails for bathing platform
- Manual bilge pump system
- Transom shower
- Emergency fuel shut-off valves in starboard locker

Electrical

- All 240 volt and 24 volt circuits are protected by circuit breakers on main electrical load control panel beside helm position
- Remotely and manually operated isolating switches for all batteries
- Heavy duty electrical panel located in service corridor
- All 12v equipment supplied from separate battery
- All stern gear, engines, fuel tanks, etc. are electrically bonded
- Emergency boat system shutdown switch.
- 12 Volt: 1 x 200 Ah gel battery
- 1 x 60 amp battery charger
- 24 Volt: 2 x 200 Ah gel batteries exclusively for starting each engine
- 4 x 200 Ah gel battery capacity for domestic services
- 24v - 12v 20 amp converter
- Battery coupling system permits either bank of batteries to start either engine
- Battery isolating switches located in service corridor
- 240 Volt: 2 x 21.5 kW Onan generators with through-hull exhausts
- 1 x 100amp regulated charger with 2 x 3 amp slave to port and starboard batteries
- 1 x 75 amp battery charger
- Twin 63 amp x 100' shoreline sockets stowed in drums via Glendinning cable master Polarity check and earth leakage trip protection system
- 2 x 18 KVA isolation transformers each with soft starts

Engine Room

- Access through cockpit floor hatches to engine bay and service corridor
- Engine bay soundproofing
- Water-cooled through-hull engine silencers
- Engine bay fire extinguisher system
- High corrosion-resistant TEMET shafts
- Large diameter contra-rotating Manganese Bronze propellers
- Manganese Bronze 'P' brackets and rudders
- Cathodic protection to all underwater gear
- Dripless shaft seals
- Reverso Oil change system
- Automatic high capacity bilge pumps for rudder, engine bay and forward accommodation
- High capacity emergency manual bilge pump system with changeover valve
- Engine air intakes with high capacity ventilation fans
- Engine bay lights
- Lever sea cocks on all inlets and outlets located less than 15cm above the waterline
- Exhaust overheat warning system for both engines

Hull Design and Build

Designed by Bernard Olesinski and the Fairline design team. Deep 'V' forward: 18° deadrise aft. Isophthalic gel coat backed by an isophthalic resin-rich powder-bound glass mat. All gel coat is laid up by hand, incorporating chopped strand glass mat, unidirectional, biaxial and woven roving's. Transverse and longitudinal strengthening stringers throughout hull. Full length molded spray deflectors. The integral bathing platform gives the boat a longer waterline length for improved performance, particularly at reduced power settings.

Engine bearers are molded into the hull. The propellers are set in semi-tunnels enabling the engines to be located further aft whilst also reducing draught and improving efficiency by reducing the shaft angle. Hull/deck join is both bonded and through-bolted. The deck incorporates polyurethane foam cores for high strength and excellent thermal insulation. 25hp bow thruster with controls at both helm positions.

Flybridge and Second Helm Position

- Teak-laid flybridge floor
- Access by teak stairway from cockpit
- Two forward facing helm seats
- Wind screen with grab rail
- Electronic throttles
- Repeat engine instruments

- Repeat autopilot and fire extinguisher controls
 - Remote controls for forward anchor winch and searchlight
 - Repeat echo sounder and log
 - Repeat radar and plotter displays
 - Open scanner radar to mast
 - Bow thruster control
 - Trim tab controls
-
- J-shaped dining seating separate from helm
-
- Sea Doo and crane installed aft on the flybridge with chocks
-
- Stainless steel guardrails
 - Large sunbathing area aft with non-absorbent foam filled cushions
 - Flybridge bar complete with refrigerator, sink, electric griddle and icemaker
 - Electrically adjustable backrest creating extended sunbathing deck

Исключения

При продаже яхты исключаются личные вещи владельца.

Отказ от ответственности

Компания предоставляет описание судна или яхты добросовестно, но не может гарантировать точность этой информации, а также не ручается за техническое состояние. Покупатель должен проинструктировать своих агентов или оценщиков исследовать представленную информацию более подробно, по собственному желанию. Продажа судна или яхты, изменение цены или снятие с продажи будет происходить без предварительного уведомления.

ФОТОГРАФИИ

L-Shaped Sofa Salon



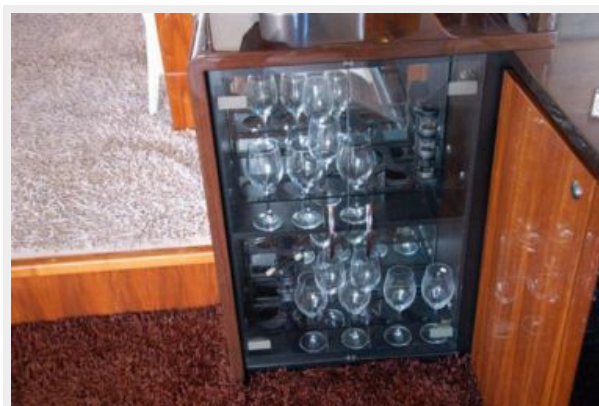
Salon View



Salon Entertainment Center



Glassware Storage



Bang and Oulfsen Premium Sound Center



Ban and Oulfsen Speakers



Like-new Carpet



Galley



Master Sofa



Master Stateroom



Master



Master Desk



Master Large Windows



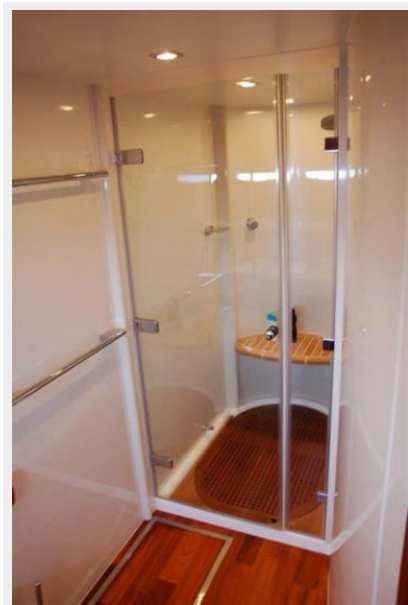
Master Walk-in Closet



Master Safe Location



Master Shower



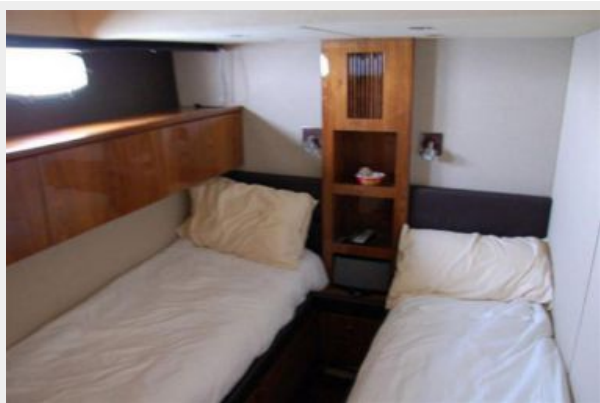
Master Sink & Vanity



Master Head



Guest Stateroom



Guest TV



Guest Head



VIP Stateroom



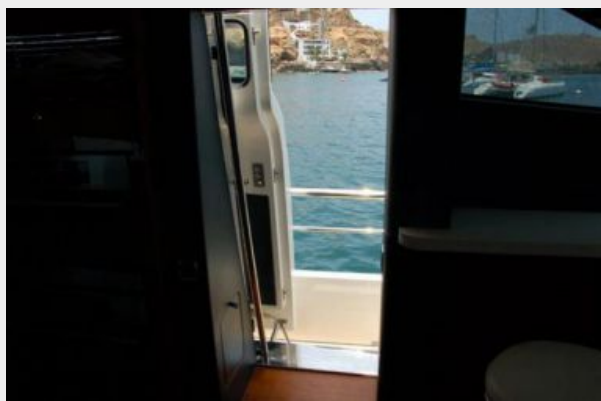
VIP Vanity



Guest Shower



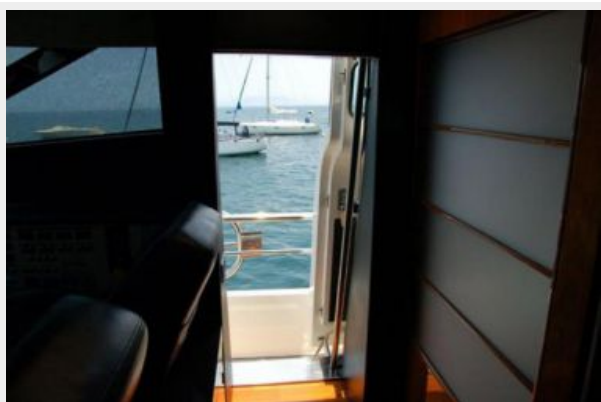
Side Port Door



Lower Helm



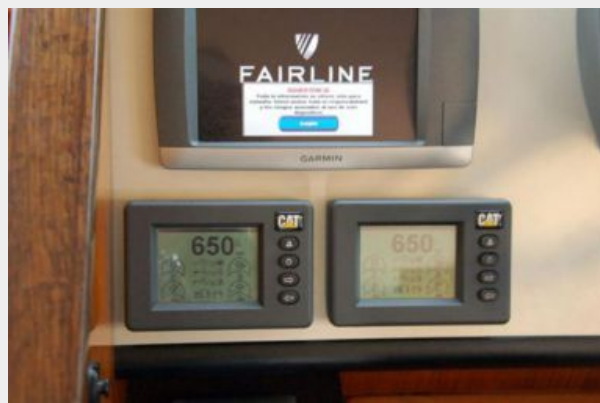
Starboard Side Door



Helm Console



Electronics



Starboard Bow



Bow



Port Side View



Bow Looking Forward



Bow Cushions



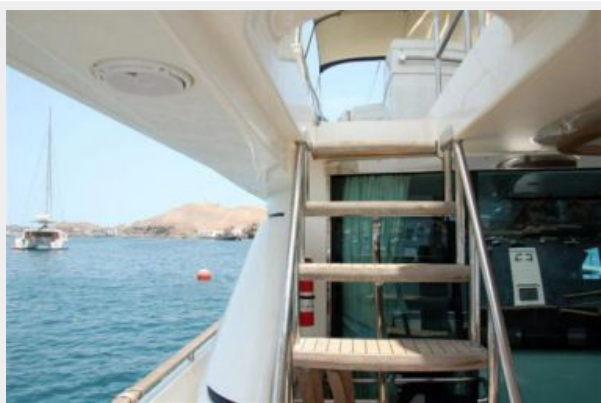
Bow Looking Aft



Port Side Deck



Access Steps to Flybridge



Aft Deck View



Fairline Davit



Upper Helm



Upper Helm Thruster Controls



upper HEIm Seating



Flybridge View Forward



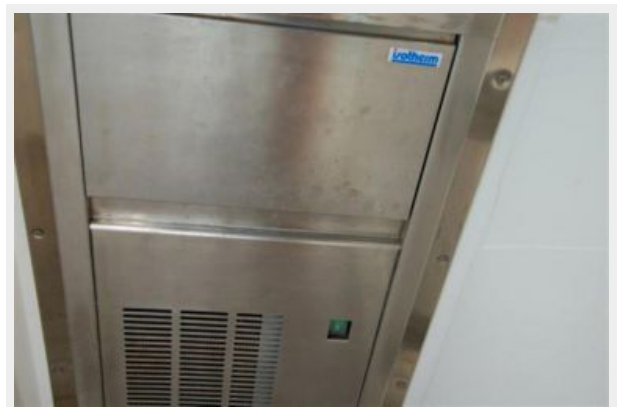
Flybridge View Aft



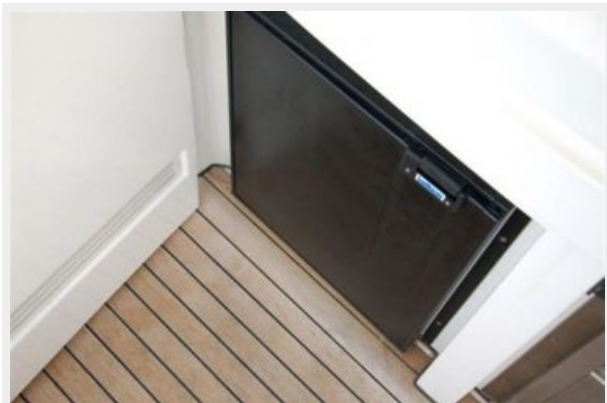
Flybridge Grill



Flybridge Icemaker



Flybridge Refrigerator



Liferaft



Flybridge Chill Box



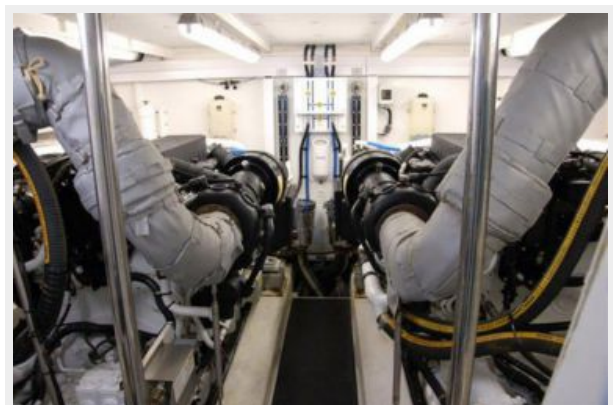
KVH SAT TV



Port Engine



Engine Room



Starboard Engine



Bottom Job



Bottom Job



Running Gear



Haul Out



КОНТАКТЫ

Андрей Шестаков (Andrey Shestakov) – ведущий яхтенный брокер отдела продаж яхт и судов компании Shestakov Yacht Sales Inc. Официальный представитель Shestakov Yacht Sales Inc. для русскоговорящих клиентов в центральном офисе компании в Майами/Форт Лодердейл/Флорида/США.

Контактная информация

Email: andrey@shestakovyachtsales.com

Web: shestakovyachtsales.com

Телефоны

Краснодарский край: **+7(918)465-66-44**

США, Майами, Флорида: **+1(954)274-4435**

Время работы

Понедельник – Суббота: **9:00 - 21:00**
EDT

Воскресенье: **Закрето**

Адрес



Harbour Towne Marina, 850 NE 3rd St,
STE 213, Dania, FL 33004