

BREATHE DEEP — TIARA



Builder: TIARA

Year Built: 2007

Model: Sport Fisherman

Price: PRICE ON APPLICATION

Location: United States

LOA: 42' 0" (12.80m)

Beam: 13' 0" (3.96m)

Min Draft: 3' 0" (0.91m)

Max Draft: 3' 0" (0.91m)

Our experienced yacht broker, Andrey Shestakov, will help you choose and buy a yacht that best suits your needs **Breathe Deep — TIARA** from our catalogue. Presently, at Shestakov Yacht Sales Inc., we have a wide variety of yachts available on our sale's list. We also work in close contact with all the big yacht manufacturers from all over the world.

If you would like to buy a yacht **Breathe Deep — TIARA** or would like help answering any questions concerning purchasing, selling or chartering a yacht, please call **+1(954)274-4435**

TABLE OF CONTENTS

TABLE OF CONTENTS	2
SPECIFICATIONS	4
Overview	4
Basic Information	4
Dimensions	4
Speed, Capacities and Weight	4
Accommodations	5
Hull and Deck Information	5
Engine Information	5
DETAILED INFORMATION	6
Vessel Walkthrough	6
Salon	6
Stateroom and Head	7
Helm and Electronics/Navigation	8
Upper Cockpit	9
Lower Cockpit	9
Deck	10
Mechanical Equipment and Engine Room	11
Electrical	12
Exclusions	12
Disclaimer	12
Exclusions	12
Disclaimer	12
PHOTOS	13
Galley	13
Salon	13
Helm Equipment	13
Master Berth	13

Entertainment	14
Swivel TV with Storage	14
Head	14
AC and DC Breakers	14
AC and DC Panels	14
Helm Toggle Switches	14
Cockpit	15
Helm Station	15
Upper Cockpit Companion Seating	15
Companion Seating	15
Fish or Storage Box	15
Forward Swivel Seat	15
Fishboxes	16
Livewell	16
Tackle Center	16
Under Entry Steps	16
Engine Room Quick Access	17
Downrigger Mount	17
Engine Room	17
Generator	17
Stern	17
Stern	17
Bow	18
CONTACTS	19
Contact details	19
Telephones	19
Office hours	19
Address	19

SPECIFICATIONS

Overview

Breathe Deep is the only fish rigged late model 32 Tiara Open with **DIESEL** engines on the market today! Up-to-date styling, impressive performance, and Tiara's unrivaled quality are all well represented in this versatile cruiser. This 32 Open Tiara Tournament Series "TTS" has it all – Cummins QSB diesel engines, hardtop with **NEW** 4 sided enclosure, full electronics including **two color chart plotters, radar, and autopilot**, large open cockpit, fishing equipment including **baitwell, outriggers, down riggers and rocket launchers**, generator and air conditioning. Electronics and fishing gear are a cut above the typical 32'. As outfitted, this 32 Open is a dual-purpose express, capable of serious fishing with cruise friendly accommodations.

Basic Information

Category: Sport Fisherman

Sub Category: Open

Model Year: 2008

Year Built: 2007

Country: United States

Coast Guard #: 1225632

Vessel Top: Hardtop

Dimensions

LOA: 42' 0" (12.80m)

Beam: 13' 0" (3.96m)

Min Draft: 3' 0" (0.91m)

Max Draft: 3' 0" (0.91m)

Speed, Capacities and Weight

Displacement: 15950 Pounds

Water Capacity: 38 Gallons

Holding Tank: 20 Gallons

Fuel Capacity: 256 Gallons

Accommodations

Total Cabins: 1

Total Berths: 3

Sleeps: 4

Total Heads: 1

Hull and Deck Information

Hull Material: Fiberglass

Hull Configuration: Modified Deep Vee

Hull Color: White

Engine Information

Engines: 2

Manufacturer: Cummins

Model: QSB5.9

Engine Type: Inboard

Fuel Type: Diesel

DETAILED INFORMATION

Vessel Walkthrough

Boarding into the aft cockpit from the side decks, one finds a well thought-out platform for either fishing or cruising. This area is equipped with a transom door, padded coaming around the perimeter, a baitwell in the transom and fish boxes with a macerator. The cockpit also offers a removable bench seat and a large bait prep center. Molded-in steps and grab rails allow safe and easy access to the foredeck.

Forward from the cockpit is the hardtop-covered bridge deck (with four sided enclosure) arranged with an adjustable bench seat at the starboard-side helm and curved companion seating plus a forward swivel seat across to port. Two overhead hatches plus the windshield vent provide ample ventilation. The helm station provides excellent visibility and convenient location for a variety of state of the art electronics. The entire bridge deck sole hydraulically rises for easy engine access; there is also a quick access engine hatch in the upper deck sole.

Moving into the cabin through a sliding access door with screen and down three steps, one finds a convertible sofa/dinette and high-gloss teak/birdseye maple table immediately to starboard. The high/low table converts to a lower berth with a berth filler cushion. The dinette backrest converts to single pullman upper berth.

The head compartment and galley are across to port. An island-style double berth is completely forward in the cabin and separates from the salon with a privacy curtain. Beneath the berth is a large storage area accessed with the assistance of gas struts.

The interior is large for a 32-footer, due in part to its wide beam, and well-crafted with solid teak cabinetry, Ultra Leather seating, teak/holly hardwood cabin sole, Corian countertops, and contemporary print fabrics..

Salon

The main cabin is entered forward from the bridge deck and down through a sliding smoked acrylic cabin entry door situated along the centerline. The salon is arranged with a convertible sofa and high/low table immediately to starboard. This settee converts to over/under berths. The flat screen TV is mounted in a side-hinged cabinet allowing it to be viewed from the salon or the forward berth and providing great storage behind it.

Companionway Door, Sliding with Lock, Screen Door, and Privacy Cover

Lounge/Dinette Seating with Storage Below

Table, Convertible High-Gloss Teak/Birdseye Maple with Hi-Lo Pedestal

Upper Pullman Berth

15" LCD TV

DVD player

AM/FM/CD Stereo

Overhead Storage Cabinets

Solid Teak and Holly Cabin Sole

Fiberglass Companionway Steps with Hardwood Tread and Storage Below

Deck Hatch with Built-in Ocean Air Screen and Privacy Shade

Portlights, Opening w/Screens (2)

Air Conditioning with Reverse-Cycle Heat

Stateroom and Head

An island-style double berth is completely forward in the cabin and separates from the salon with a privacy curtain. Beneath the berth is a large storage area accessed when you lift the berth with assistance of the gas struts. The enclosed head compartment is positioned immediately to port upon entry to the cabin.

Berth:

Double Pedestal Berth with Innerspring Mattress

Bedsread, Shams and Pillows

Storage Compartment under Berth

Hanging Locker, Cedar Lined and Lighted

Privacy Curtain

Deck Hatch with Built-in Ocean Air Screen and Privacy Shade

Portlights, Opening with Screens (2)

Head:

Vacuflush Head

Stand-Up Fiberglass Shower w/Curtain

Mirrored Vanity with Stainless Steel Sink

Corian Countertop

Cabinet Storage

Portlight, Opening with Screen

Helm and Electronics/Navigation

The helm station is situated forward and to starboard on the bridge deck and features an adjustable bench seat with storage beneath and a low-glare (flag blue gelcoat) hinged helm console that tilts back for service access. An impressive array of navigation electronics are professionally installed at the helm.

Hinged Helm Console with Cover

Steering Wheel, Stainless Steel

Helm Seat w/Power Actuator for Fore and Aft Adjustment

Twin Mechanical Engine Controls, Teleflex

Engine Synchronization

Smartcraft Electronic Engine Displays (2)

Raymarine E-120 GPS/Plotter Networked Display with Fishfinder

Garmin 4208 w/Separate Transducer

Auto Pilot, ST6002

Radar, Open Array

VHF Radio, Ray240

Digital Multi Function Display

Compass, Ritchie

Rudder Angle Indicator

Remote Controls for Trim Tabs, Spotlight and Windlass

Windshield Wipers and Washers (3)

Air Horn

Clarion Stereo Remote Controls and Outdoor Stereo Speakers

Upper Cockpit

The bridge deck is forward of the cockpit and up one step. This area is covered by a fiberglass hardtop and features a NEW full enclosure as well as two opening overhead hatches with screens and shades. The helm console is hinged and has room for all of the state of the art electronics, instrumentation and gauges. An adjustable bench seat at the starboard-side helm has storage under. The large companion settee to port has an insulated cooler under. Forward to port is the optional swivel bench seat with storage.

The entire bridge deck sole hydraulically rises for engine compartment access (plus there is a quick-access deck hatch).

Hardtop with Front, Side and Aft Enclosures (NEW Enclosure)

Shades for Side Enclosures (NEW)

Helm Console with Flag Blue Gelcoat

Overhead Hatches with Screens and Shades

Windshield Vent Hatch, Electric

Helm Seat w/Power Actuator to Starboard and Storage Below

Portside Navigation Chart Area with Drink Holders

Port Curved Companion Lounge with Cooler Below

Forward Swivel Seat Option with Storage

Cool Air Helm Blower

Engine Room Access Hatch

Weather Covers for Helm Console and Cockpit Seating

Overhead Lighting plus Non-Intrusive Red Light for Night Vision

Courtesy Lighting

Non-skid Decking

Lower Cockpit

Boarding into the aft cockpit one finds a well thought-out platform for either fishing or cruising.

This area is equipped with a transom door, transom baitwell, padded coaming around the perimeter, and flush floor storage/fish boxes with macerator. The lower cockpit is outfitted with removable bench seating plus large bait prep/storage center.

Outriggers on the Hardtop, Taco Grand Slam

Rocket Launchers on Underside of Aft Hardtop with Holders (7)

Rocket Launchers on Each Side with Holders (4)

Rod Holders in the Gunnels (6)

Transom Baitwell, 36 Gallon with Circulating Pump and Drain

Downriggers

Flush Floor Insulated Fish Boxes (2) **w/Macerator**

Bait Prep Center

Removable Bench Seat w/Cover

In-Deck Fuel Tank Access Hatch with Fuel Shut-Off Valves

Molded-In Steps to Deck Walkways, Port and Starboard

Cockpit Coaming Bolsters

Rod Storage Racks and Clips

Cockpit Shower, Hot and Cold Water

Fresh Water and Raw Water Washdowns

Aluminum Backing Plate, Laminated In Cockpit Floor

Self-Draining, Non-skid Cockpit

Cockpit Cover

Molded-In Transom Door and Gate

Spreader Lights

Courtesy Lighting

Deck

The foredeck is safely accessed from either side of the cockpit by way of molded-in steps to the

wide sidewalks. This passage is made safe with conveniently-positioned handholds (white powder coated) and non-skid decking.

Windlass, Electric w/Foredeck Foot-Switches and Helm-Mounted Remote Control

Anchor, with Chain and Nylon Rode

Anchor Locker Access with Overboard Drain

Molded-In Bow Pulpit with Stainless Steel Anchor Roller

Optional Aluminum Bow Rail

Molded-in Hullside Engine Room Ventilation

Mechanical Equipment and Engine Room

The entire bridge deck sole can be hydraulically raised for excellent engine compartment access. There is also a quick access deck hatch along the centerline of the bridge deck sole. The engines and generator are also equipped with the optional oil changing system.

The service on engines and generator is current.

Engine Hatch Actuator

Fire Suppression System, Automatic/Manual

Bilge Pumps, Automatic/Manual (3)

Bilge Blowers (2)

Racor Fuel Filters/Water Separators

Hydraulic Steering

Bennett Hydraulic Trim Tabs

Fuel Tank (1), Composite with Electric Gauge and Fuel Shut Off

Air Conditioning w/Reverse Cycle Heat

Holding Tank w/Macerator & Y-Valve

Oil Change System for Engines and Gen

Water Heater

Engine Room Lights 12V

Electrical

120-volt AC, 12-volt DC

(2) 120-volt 30-amp 65' Dockside Power Cords & Connections

Generator, 5Kw Westerbeke

Cable TV/Phone Connection with Dockside Cord

Batteries (4) and Battery Switches

Battery Charger, 50-amp Automatic

Waste and Water Tank Level Indicators

Underwater Lights

Exclusions

Personal Items, Life Raft

Disclaimer

The Company offers the details of this vessel in good faith but cannot guarantee or warrant the accuracy of this information nor warrant the condition of the vessel. A buyer should instruct his agents, or his surveyors, to investigate such details as the buyer desires validated. This vessel is offered subject to prior sale, price change, or withdrawal without notice.

Exclusions

Owner's personal belongings.

Disclaimer

The Company offers the details of this vessel or yacht in good faith but cannot guarantee or warrant the accuracy of this information nor warrant the condition of the vessel. A buyer should instruct his representatives, agents, or his surveyors, to investigate such details as the buyer desires validated. This vessel or yacht is offered subject to prior sale, price change, or withdrawal without notice.

PHOTOS

Salon



Galley



Master Berth



Helm Equipment



Entertainment



Swivel TV with Storage



Head



AC and DC Breakers



AC and DC Panels



Helm Toggle Switches



Helm Station



Cockpit



Upper Cockpit Companion Seating



Companion Seating



Forward Swivel Seat



Fish or Storage Box



Fishboxes



Livewell



Tackle Center



Under Entry Steps



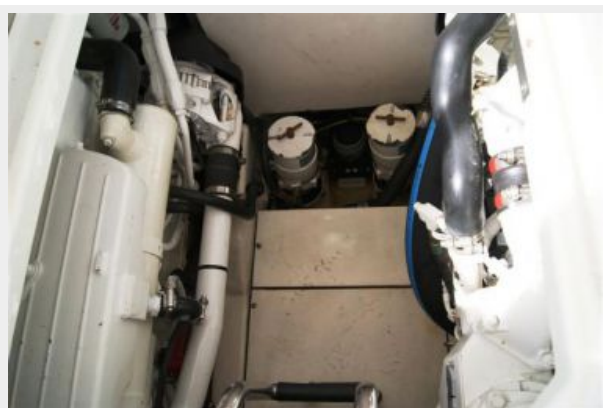
Downrigger Mount



Engine Room Quick Access



Engine Room



Generator



Stern



Stern



Bow



CONTACTS

Andrey Shestakov, leading yacht broker of the sales department of Shestakov Yacht Sales Inc. Shestakov Yacht Sales Inc., the official representative of the Miami/Fort Lauderdale FL headquarters.

Contact details

Email:
andrey@shestakovyachtsales.com

Web: shestakovyachtsales.com/en/

Telephones

USA: **+1(954)274-4435**

Office hours

Monday – Saturday: **9:00 - 21:00 EDT**

Sunday: **closed**

Address



Harbour Towne Marina, 850 NE 3rd St,
STE 213, Dania, FL 33004