

## ONYX — BROOKE MARINE



**Builder:** BROOKE MARINE

**Year Built:** 1988

**Model:** Cruising Sailboat

**Price:** PRICE ON APPLICATION

**Location:** Greece

**LOA:** 95' 2" (29.01m)

**Beam:** 22' 0" (6.71m)

**Min Draft:** 12' 5" (3.78m)

Our experienced yacht broker, Andrey Shestakov, will help you choose and buy a yacht that best suits your needs **ONYX — BROOKE MARINE** from our catalogue. Presently, at Shestakov Yacht Sales Inc., we have a wide variety of yachts available on our sale's list. We also work in close contact with all the big yacht manufacturers from all over the world.

If you would like to buy a yacht **ONYX — BROOKE MARINE** or would like help answering any questions concerning purchasing, selling or chartering a yacht, please call **+1(954)274-4435**

# TABLE OF CONTENTS

TABLE OF CONTENTS	2
SPECIFICATIONS	4
Overview	4
Basic Information	4
Dimensions	4
Speed, Capacities and Weight	4
Accommodations	4
Hull and Deck Information	4
Engine Information	5
DETAILED INFORMATION	6
Broker's Comments	6
Recent Refit	6
Construction	6
Machinery	7
Electrical Systems	7
Plumbing Systems	8
Tankage	8
Navigation Equipment	8
Domestic Equipment	9
Accommodation	9
Deck Equipment	10
Exclusions	11
Disclaimer	11
PHOTOS	13
CONTACTS	16
Contact details	16
Telephones	16
Office hours	16

---

Address

16

---

# SPECIFICATIONS

---

## Overview

---

Classic looking Ron Holland which is offered fresh from a mega makeover including nice new decks. Owners' fleet expanding hence the very modest ask.

## Basic Information

---

**Category:** Cruising Sailboat

**Model Year:** 1988

**Year Built:** 1988

**Country:** Greece

## Dimensions

---

**LOA:** 95' 2" (29.01m)

**LWL:** 75' 5" (22.99m)

**Beam:** 22' 0" (6.71m)

**Min Draft:** 12' 5" (3.78m)

## Speed, Capacities and Weight

---

**Displacement:** 179235.819006 Pounds

**Water Capacity:** 1585.032312 Gallons

**Fuel Capacity:** 3064.3958032 Gallons

## Accommodations

---

**Total Cabins:** 3

**Total Berths:** 6

**Total Heads:** 3

## Hull and Deck Information

---

**Hull Material:** Steel

**Deck Material:** Teak

**Hull Configuration:** Fin & Bulb

**Hull Designer:** Ron Holland

---

## Engine Information

---

**Engines:** 1

**Manufacturer:** Iveco

**Engine Type:** Inboard

**Fuel Type:** Diesel

---

# DETAILED INFORMATION

---

## Broker's Comments

---

ONYX is a great looking Ron Holland design which was built in the UK by Brooke Marine. She has enjoyed a series of refits through life most recently in this ownership which saw a total upgrade of her structure and a new teak deck. She is now ready for many more years of service. She offers great sailing and excellent interior accommodation which is classic. It has been upgraded to reflect the needs of 21<sup>st</sup> century yachtsmen. She is now being offered for sale at a price level which indicates her owners' wish to dispose rather than being a reflection of her value. She is a seriously good looking yacht which is skipper maintained at a very attractive price level.

## Recent Refit

---

In 2014, it was decided to refit ONYX as there were signs of degradation in the exterior metal work and also the teak deck was in need of work. The owners of ONYX selected S Acritidis to carry out this work who are based in Greece and who have laid more than 18500 m2 of new teak decks since 1973. The work was overseen by a Bureau Veritas surveyor who signed off all the work done throughout the process. Once the teak deck was removed all areas of rust and in areas where the structure was broken down were clearly revealed. These areas were repaired by Lloyds coded welders before a new teak deck was applied. After that the yacht's hull and superstructure were filled, faired and repainted. There is a full file which details this refit which is available to interested clients.

## Construction

---

### *Hull, Deck & Superstructure Construction:*

- Steel hull and superstructure.
- Teak deck overlaid on the steel subdeck. The teak deck has been replaced and the steel structure surveyed and replated as necessary in 2014.
- Dinghy garage all completely rebuilt during the 2014 refit.

### *Keel & Rudder:*

- Moderate fin and skeg hung rudder.

---

## Machinery

---

### *Engine & Gearboxes:*

- 1 x Iveco diesel 300hp.

### *Maintenance & Performance:*

- The main engine has been serviced in accordance with the manufacturer's recommendations.
- Engine fully serviced every year in April – major overhaul at 5,000 hours now at 7,786 hours.

### *Propulsion & Steering:*

- 30hp hydraulic bow thruster.

---

## Electrical Systems

---

### *Voltage Systems:*

- 12/24v DC 210/220C AC.

### *Battery Banks:*

- 24v.

### *Battery Chargers:*

- 2 x Mastervolt chargers.

### *Generator:*

- Northern Lights generators :
  1. both new 2012: 400 hours and 2014: 150 hours

2. brand new 2014 and 2015

*Shore Power:*

- 220v ring main and charging systems.

*Other Electrical:*

- Mastervolt inverter.

---

## Plumbing Systems

---

*Fresh Water & Water Heating System:*

- 150 litre boiler.

*Watermaker:*

- 44 gals/hr. 200 litres/hr.

---

## Tankage

---

*Fuel:*

- Total capacity of 11,600 litres (2,420 gallons).

*Fresh water:*

- Total capacity of 6,000 litres (1,320 gallons).

---

## Navigation Equipment

---

- Portable telephone set.
- SSB & VHF radios; internet.
- CPS & plotter.



- Weather fax.

---

## Domestic Equipment

---

### *Galley:*

- Oven.
- Microwave.
- Fridge.
- Freezer.
- Coffee machine.
- Dishwasher.

### *Heads/Showers:*

- Master stateroom, VIP stateroom and guest cabin all have en-suite facilities.

### *Heating & Ventilation:*

- Fully air conditioned (3 x Condaria compressors, reversible).

### *Entertainment:*

- Stereo music system in Master, Guest and VIP stateroom forward; as well as in the saloon.
- Television and video in Master stateroom and saloon.
- CD & video library.

---

## Accommodation

---

### *Summary of Accommodation:*

- With only 3 guest cabins on a yacht of this size you can be certain they are spacious. All are air conditioned with en-suite heads compartments, built-in stereos and, in the master stateroom, television and video.

- Captain's cabin and crew cabin aft.

*Description of layout from forwards:*

- Master Stateroom – with large double berth, wardrobe, dressing table and sofa. Stereo music system, television and video. En-suite heads compartment with shower, basin and WC.
- Guest Cabin – with two single berths, wardrobe and drawers. Stereo music system. En-suite heads compartment with shower, basin and WC.
- VIP Stateroom – with large double berth, wardrobe and drawers. En-suite heads compartment with shower, basin and WC. Stereo music system.
- Dining Area – with unique oval inlaid mahogany table and oval seating area which comfortably seats up to eight/ten persons.
- Saloon – with comfortable sofa area, club chairs and writing desk. Stereo music system, television and video with large video library. Full beam width.
- Galley – fully equipped with oven, microwave, fridge, freezer, coffee machine etc.

## **Deck Equipment**

---

*Rig:*

- Sloop, in-mast furling mainsail furling foresail.

*Sails:*

- Sail Area: 3,521 square feet.
- New set of sails last September brand new UNUSED

*General:*

- Fully cushioned seating and solid teak dining table in guest cockpit.
- Hydraulic passarelle.

*Anchoring & Mooring Equipment:*

- Danforth 20lb anchor, plus windlass.
- 2 x Aft capstan winch.

*Covers, Canvas & Cushions:*

- Sprayhood.
- Fixed bimini.
- Cockpit cushions.

*Tender & Outboard:*

- 4.20m Zodiac inflatable hard keel dinghy with 60hp outboard engine.
- 3.8m Quicksilver tender, plus 9.9hp outboard.

*Safety Equipment:*

- 12 x Lifejackets.
- 2 x 6-man liferafts.
- 4 x Life rings.

*Fire-fighting equipment:*

- Engine room CO2 system.
- 12 x Fire extinguishers.

## **Exclusions**

---

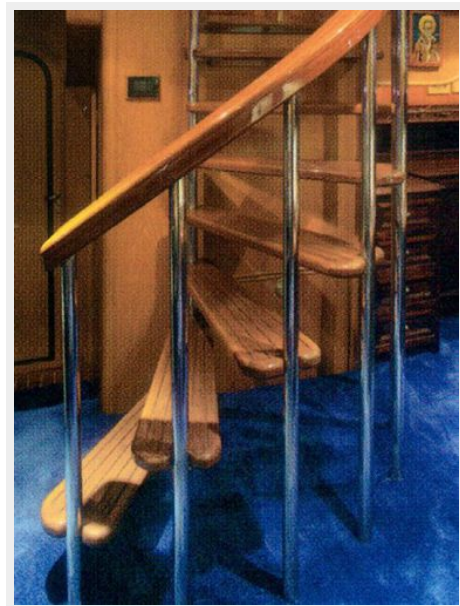
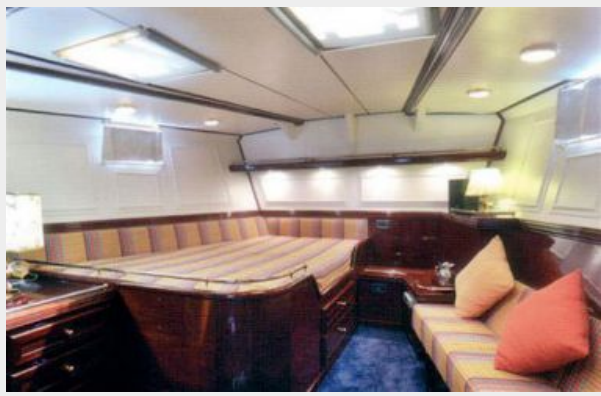
Owner's personal belongings.

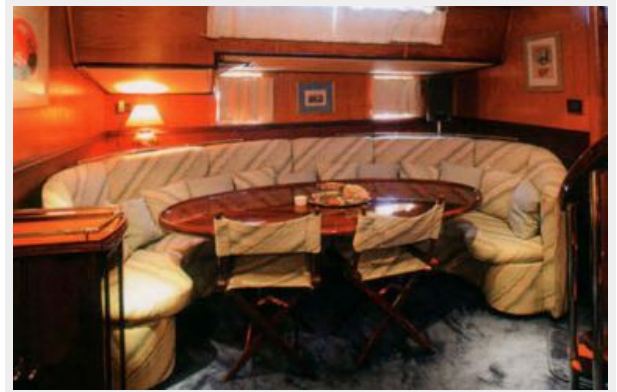
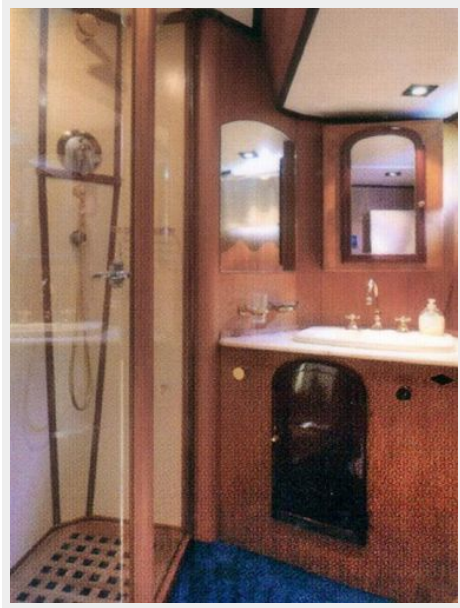
## **Disclaimer**

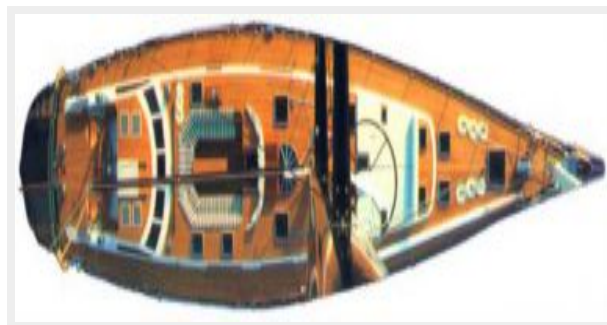
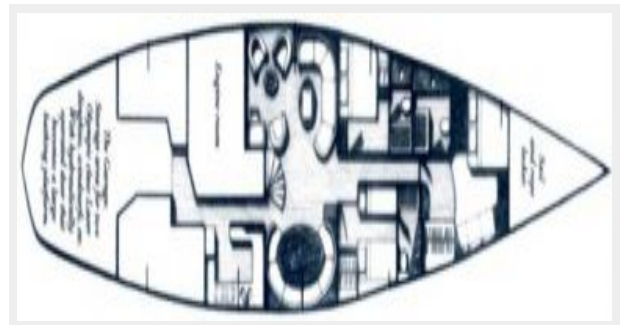
---

The Company offers the details of this vessel or yacht in good faith but cannot guarantee or warrant the accuracy of this information nor warrant the condition of the vessel. A buyer should instruct his representatives, agents, or his surveyors, to investigate such details as the buyer desires validated. This vessel or yacht is offered subject to prior sale, price change, or withdrawal without notice.

# PHOTOS







# CONTACTS

---

Andrey Shestakov, leading yacht broker of the sales department of Shestakov Yacht Sales Inc. Shestakov Yacht Sales Inc., the official representative of the Miami/Fort Lauderdale FL headquarters.

## Contact details

---

Email: [andrey@shestakovyachtsales.com](mailto:andrey@shestakovyachtsales.com)

Web: [shestakovyachtsales.com/en/](http://shestakovyachtsales.com/en/)

## Telephones

---

USA: +1(954)274-4435

## Office hours

---

Monday – Saturday: **9:00 - 21:00** EDT

Sunday: **closed**

## Address

---



Harbour Towne Marina, 850 NE 3rd St,  
STE 213, Dania, FL 33004