

COMOCEAN — SABRE YACHTS



Судостроитель: SABRE YACHTS

Год постройки: 2006

Модель: Траулер

Цена: ЦЕНА ЯХТЫ ПО ЗАПРОСУ

Местонахождение: United States

Длина общая: 42' 0" (12.80m)

Ширина: 14' 4" (4.37m)

Макс. осадка: 3' 9" (1.14m)

Крейс. скорость: 26 Kts. (30 MPH)

Макс. скорость: 32 Kts. (37 MPH)

Купить Comocean — SABRE YACHTS а также выбрать подходящую вам яхту из нашего каталога яхт вам поможет опытный яхтенный брокер Андрей Шестаков. На сегодняшний день компания Shestakov Yacht Sales Inc. имеет большое количество яхт в собственном списке продаж, а также тесно сотрудничает со всеми крупными яхтенными производителями по всему миру.

Для того чтобы купить яхту Comocean — SABRE YACHTS а также проконсультироваться по любому вопросу связанному с покупкой, продажей, чартером яхт позвоните по телефону **+7(918)465-66-44**.

ОГЛАВЛЕНИЕ

ОГЛАВЛЕНИЕ	2
ХАРАКТЕРИСТИКИ	4
Обзор	4
Основная информация	4
Размеры	4
Скорость, вместимость и масса	4
Размещение	4
Корпус и палуба	5
Информация о двигателе	5
ПОДРОБНОЕ ОПИСАНИЕ	6
Overview	6
Salon	6
Galley	6
Master Stateroom	7
Master Head	7
VIP Stateroom	8
Helm Deck	8
Electronics	9
Electrical	9
Mechanical and Engine Room	10
Deck	11
Исключения	12
Отказ от ответственности	12
ФОТОГРАФИИ	13
Salon	13
Galley	13
Master Stateroom	13
Helm	13

Salon	14
Guest Stateroom	14
Head	14
Head	14
Helm	15
Helm Deck	15
Helm Deck	15
Helm Deck	15
Starboard	16
Fore Deck	16
Deck	16
Aft Deck	16
Aft	17
Bow	17
Running Gear	17
Bow Thruster	17
Stern Thruster	18
Running Gear	18
Engine Room	18
Engine Room	18
Engine Room	19
Starboard Profile	19
Profile	19
КОНТАКТЫ	20
Контактная информация	20
Телефоны	20
Время работы	20
Адрес	20

ХАРАКТЕРИСТИКИ

Обзор

This Sabre 42 HT Express is a beautiful example of one of the most sought after Sabre models. She is well equipped and features a long list of options and equipment. This boat features the optional hard back enclosure that closes off the helm area and provides a new level of cruising.

Flag Blue Hullside Paint 2015

Bottom Paint 2015

Electronics 2014

Основная информация

Тип судна: Траулер

Модельный год: 2006

Год постройки: 2006

Страна: United States

Размеры

Длина общая: 42' 0" (12.80m)

Ширина: 14' 4" (4.37m)

Макс. осадка: 3' 9" (1.14m)

Трапы: 14' 1" (4.29m)

Скорость, вместимость и масса

Крейс. скорость: 26 Kts. (30 MPH)

Макс. скорость: 32 Kts. (37 MPH)

Водоизмещение: 30000 Pounds

Вместимость воды: 160 Gallons

Вместимость сточного бака: 60 Gallons

Объем топливного бака: 450 Gallons

Размещение

Всего кают: 2

Всего ком. состава: 2

Корпус и палуба

Материал корпуса: Fiberglass

Информация о двигателе

Производитель: Cummins

Модель: QSC 8.3

Тип двигателя: Inboard

Тип топлива: Diesel

ПОДРОБНОЕ ОПИСАНИЕ

Overview

The Sabre 42 Hard Top Express' helm deck is a careful study in ergonomics, surrounded by large opening windows and overhead hatches for maximum ventilation and light. Views for the helmsman and crew are virtually unobstructed. The Stidd helm and mate's chairs, covered in Ultraleather upholstery, provide a degree of comfort rarely found in competitors yachts. To add to cruising comfort, Sabre engineers have reduced noise and vibration levels with a careful study of engine room ventilation and insulation. Wide side decks with large diameter stainless steel hand rails, custom stainless steel portlights, line chocks and air intakes, a standard rope chain windlass and highly polished aluminum hatches all add to the beauty and functionality of her deck. A double anchor roller makes anchoring work a breeze. An optional hard back enclosure closes off the helm deck from the cockpit with the addition of two elegant curved windows in the corners, a sliding window to port and an aluminum entry door.

Below decks her hand-crafted cherry interior adds to the sense of luxury, evident throughout. The master stateroom berth is low and wide, making it both comfortable and easy to access. The head with stall shower has private access from the stateroom and from the salon. The main salon is configured with a long L-shaped settee and a custom, maple-inlaid salon table. The guest stateroom to starboard is equipped with a pull out double berth, many drawers and lockers. Her galley is equipped with an electric cook top, convection microwave oven and offers ample storage for extended voyages.

Salon

- Beautiful satin cherry interior
- Salon A/C
- Ultrasuede L-shaped sofa with storage beneath
- High gloss maple table with inlay
- Soft headliner panels
- Teak and holly flooring
- Birds Eye Maple Dinette Table
- Espar diesel heat vent
- Overhead Lewmar hatches

Galley

- Princess Gourmet 2 burner smooth top stove
- Panasonic Dimersion 4 "The Genius" convection microwave
- Tundra refrigerator/freezer

- Tundra TF@.0 freezer opposite galley-option
- Stainless steel polished sink
- Scandvik faucet with pull-out spout
- Water filtration system under sink
- Wema port/stbd. water level indicator
- L-shaped galley
- Corian countertops
- Teak & holly sole
- (2) louvered upper cabinets
- (2) lower cabinets
- (4) push button drawers
- Halogen lighting
- Vimar switch
- 110 volt outlet
- (1) large opening stainless steel portlite with blinds

Master Stateroom

- Island berth with 6" foam mattress
- Custom bedding
- Raymarine ST60 depth display
- Espar diesel heat vent
- Marine Air Systems reverse-cycle heat/air 12,000 BTU unit
- Overhead Lewmar hatch with Ocean Air roller shade/screen-integral black-out screen and fly screen
- (2) stainless steel portlites with blinds
- First Alert Carbon monoxide detector
- (1) cedar lined, backlit, louvered hanging locker
- (5) louvered cabinets-(4)overhead (1)to the side
- (5) drawers
- (2) Halogen lighting
- (2) Ocean Frigast Denmark reading lights
- (2) accent floor lighting
- Vimar switches
- (2) 110 volt outlets
- Teak and holly flooring
- (1) floor hatch-access/storage
- (1) hanging hook

Master Head

- Corian countertops

- Fiberglass sink with Delta faucet
- Circular shower stall with clear plexiglass door
- Shower seat and wet locker outboard
- Storage lockers
- Jabsco Quiet-Flush fresh water electric head
- Fiberglass sole with anti-skid
- (1) stainless steel portlite with blinds
- (2) piece mirror on door to master stateroom
- Rectangular adjustable wood trimmed mirror above sink
- Towel bar holder
- TP holder inside cabinet
- Halogen lighting
- Vimar switch with (1) 110volt outlet
- Ventilation fan blower
- Tankwatch 4

VIP Stateroom

- Double berth with foam mattress
- Custom bedding
- Espar diesel furnace vent
- Marine Air Systems reverse-cycle heat/air 12,000 BTU unit
- Lewmar hatch with Ocean Air roller shade/screen-integral black-out screen and fly screen
- Large stainless steel portlite with blinds
- Espar diesel furnace thermostat with 2 vents
- (2) Drawers
- (2) Upper cabinets-louvered
- (5) Halogen lighting
- (1) Ocean Frigast Denmark reading light
- Vimar switches and outlets

Helm Deck

- Hinged molded control station console for electronics with storage below
- (2) Stidd 500 series helm chairs with foot rests
- Ultraleather L-shaped settee with storage beneath
- Ultraleather bench seat stbd. aft
- Custom high gloss cherry command bridge table with inlay
- Helm deck entertainment wet bar with stainless steel sink, Corian countertop, serving area and U-line icemaker with louvered teak doors
- (2) Lewmar hatches with Ocean Air roller shade/screen-integral black-out screen and fly screen

- (3) sliding windows (port, stbd and aft) and center opening windshield window
- (2) defrosters for windshield windows
- Marine Air Systems Reverse-Cycle heat and air 24,000 BTU Unit (2011)
- Hard back enclosure with aluminum door and curved glass windows-upgrade
- Teak helm sole-upgrade
- Soft headliner panels
- Ceiling teak grab rails on center
- Espar D5LC diesel heat with one thermostat and two vents
- (6) Halogen lighting
- (2) 110 volt outlets
- 12 volt DC outlet-at helm
- Vimar switches
- CO2 Detector
- Rear Opening window

Electronics

- (2) E127 Raymarine Hybrid Touch Screen Displays (2014)
- Smartcraft LCD displays for each engine
- Raymarine 4kw 48nm radius open array radar Digital (2014)
- Raymarine ST7001 Smartpilot autopilot with S100 wireless remote (2014)
- iCom VHF with speaker
- Raymarine ST60+ Autohelm series wind indicator
- Raymarine ST60+ Autohelm series depth-master stateroom
- AIS system via E-127 series
- Ritchie compass
- HD Color TV antenna
- Dynex 20" LCD TV in Salon
- Fusion Stereo System w/Subwoofer and Speakers in Salon
- Aft Video Camera via E-127
- Electronic Controls

Electrical

- AC/DC panel-located after helm deck going to lower accommodations right hand side
- Onan e-series remote panel by AC/DC panel
- Xantrex inverter remote panel and battery remote panel by AC/DC panel
- ProMariner remote panel by AC/DC panel
- Onan 9 kw e-series genset with soundshield, anti-syphon valve and 634 hours
- Xantrex 2500 watt Freedom Marine 25 inverter with 130amp inverter/charger
- Guest battery switches for engine/ship/parallel
- Xantrex Battery charger (2014)

- (2) Lifeline 8D AGM batteries-inverter/house Nov. 2011
- (2) Lifeline Group 31 Deep cycle AGM batteries-starting Nov. 2011
- (1) Lifeline Group 24 battery-genset Nov. 2011
- Fireboy CG2-900 automatic fire suppression system with shut-down system at helm
- Glendinning electronic controls-upgrade
- 2 zone Marine Air Systems reverse cycle heat/air 12,000 BTU units in staterooms and 24,000 BTU Unit on Helm Deck
- Sidepower bow and stern thrusters
- Jabsco Quiet-Flush fresh water electric head
- Tankwatch 4
- 50 amp/240 volt shorepower inlet-starboard side in cockpit
- 50 amp 50' shorepower cord
- Marinco Sealink 12 volt DC outlet at helm
- 12 volt lighting system with Cantalupi Italian overhead lighting and Ocean Frigast Denmark Danish Cabin reading lighting
- Navigation lights- side, steaming, stern and 360 degree anchor light

Mechanical and Engine Room

Power is provided by a pair of Cummins QSC8.3L 500hp deisel engines that will provide a top speed of 32 knots, a comfortable cruise of 26 and according to the owner is very fuel efficient cruising at 8 knots, burning just 2gph and with 450 gallons of fuel offers a very comfortable cruising range.

- Cummins QSC8.3 mains with 500hp at 2600 RPM
- ZF 280-1A transmissions with 2.000 ratio
- ZF transmission Trolling valve
- Onan 9 kw e-series genset with soundshield, anti-syphon valve and 634 hours
- SeaRecovery Aqua-Matic 1800 gpd watermaker with soft-start relay, UV-sterilizer, plankton filter and auto fresh water flush-all options
- (2) Espar D5LC forced air diesel furnaces with 18,800 BTU each-below deck and helm deck
- Force 10 hot water heater with 11 gallon capacity
- (3) Rule 2000(2000gph) automatic bilge pumps
- Racor 1000MA fuel filter with fuel/water separators with waer level alarms-mains
- Fuel shut-off valves in lazarette
- Reverse oil change system
- Custom glass foot step platforms above shafts with stainless steel frame
- (5) Flourescent lighting
- Sounddown foam noise barrier engine insulation
- Engine room blower
- Fresh water washdown
- Groco ARG-2500-S raw water sea strainer each- mains

- Groco ARG-750-S raw water sea strainer- genset
- 2" Aquamet 22 stainless steel shafts
- New Tides dripless shaft seals
- (4) blade Nibral propellers to ISO class S standards
- Sea water cooled exhaust system with in-line mufflers and side exhaust outlets with new S.S. exhaust elbows (2014)
- Manganese bronze struts with rubber cutlass bearings
- Custom main engine block heaters

Deck

- Zodiac 6 person liferaft canister- mounted on hardtop (not certified)
- CQR 35lb. stainless anchor with swivel and shackle
- 150' of 5/16" high test chain marked every 25'
- 250' of non-twist rode
- Lewmar anchor windlass with rope/chain gypsy
- Fiberglass bow pulpit with double anchor rollers
- 1 1/4" stainless steel exterior railing
- Transom door
- Transom shower hot/cold water
- Fresh and salt water washdowns- fore and aft
- Non-skid(beige color)- foredeck, sidedecks & cockpit
- Canvas eyebrow over aft hardtop
- Stainless steel grab rail on hardtop
- Flag staff (teak) with American flag
- Custom stainless steel bow burgee staff
- Custom stainless steel muskrat exhaust guards
- Custom aft cockpit hawse pipes
- Custom pole holders
- Professionally detailed every 90 Days
- (4) 25' 5/8" braided dock lines
- Bow and stern chocks
- (4) 10" x 26" black Taylor fenders with soft fleece covers
- Custom made air intake covers
- Window screens (2 sets) Phifertex Mesh
- (4) pack of PFD secured in bag
- Two sets of external window coverings
- Spare parts kit- engines
- Spare parts kit- genset
- Sunbrella hatch covers, cockpit seat covers, and transom cover
- New hull side and bottom paint
- Aquamatic Water Maker
- Bow and Stern thrusters

Исключения

При продаже яхты исключаются личные вещи владельца.

Отказ от ответственности

Компания предоставляет описание судна или яхты добросовестно, но не может гарантировать точность этой информации, а также не ручается за техническое состояние. Покупатель должен проинструктировать своих агентов или оценщиков исследовать представленную информацию более подробно, по собственному желанию. Продажа судна или яхты, изменение цены или снятие с продажи будет происходить без предварительного уведомления.

ФОТОГРАФИИ

Salon



Galley



Master Stateroom



Helm



Salon



Guest Stateroom



Head



Head



Helm



Helm Deck



Helm Deck



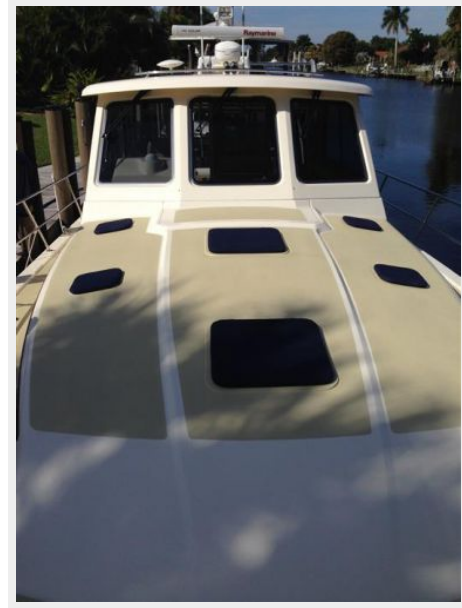
Helm Deck



Starboard



Fore Deck



Deck



Aft Deck



Aft



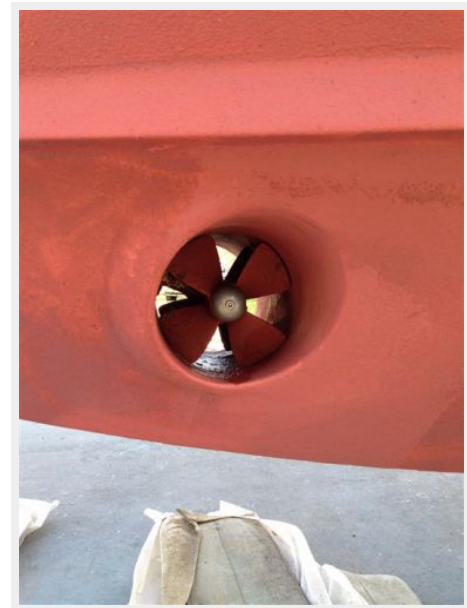
Bow



Running Gear



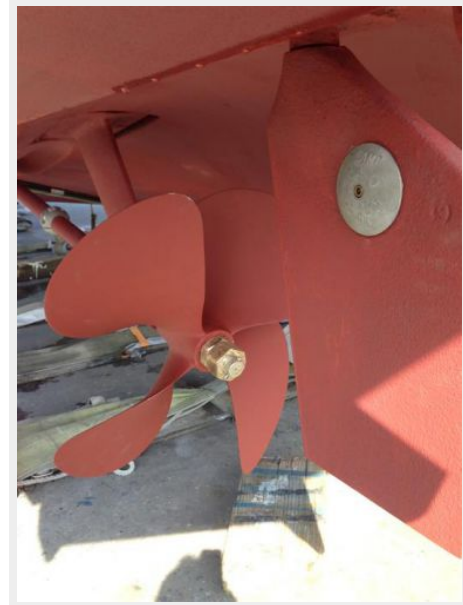
Bow Thruster



Stern Thruster



Running Gear



Engine Room



Engine Room



Engine Room



Starboard Profile



Profile



КОНТАКТЫ

Андрей Шестаков (Andrey Shestakov) – ведущий яхтенный брокер отдела продаж яхт и судов компании Shestakov Yacht Sales Inc. Официальный представитель Shestakov Yacht Sales Inc. для русскоговорящих клиентов в центральном офисе компании в Майами/Форт Лодердейл/Флорида/США.

Контактная информация

Email: andrey@shestakovyachtsales.com

Web: shestakovyachtsales.com

Телефоны

Краснодарский край: **+7(918)465-66-44**

США, Майами, Флорида: **+1(954)274-4435**

Время работы

Понедельник – Суббота: **9:00 - 21:00**
EDT

Воскресенье: **Закрито**

Адрес



Harbour Towne Marina, 850 NE 3rd St,
STE 213, Dania, FL 33004