

BRIANNA II — CHRIS CRAFT



Builder: CHRIS CRAFT

Year Built: 1957

Model: Cruiser

Price: PRICE ON APPLICATION

Location: Canada

LOA: 40' 0" (12.19m)

Beam: 12' 1" (3.68m)

Min Draft: 2' 8" (0.81m)

Our experienced yacht broker, Andrey Shestakov, will help you choose and buy a yacht that best suits your needs **Brianna II — CHRIS CRAFT** from our catalogue. Presently, at Shestakov Yacht Sales Inc., we have a wide variety of yachts available on our sale's list. We also work in close contact with all the big yacht manufacturers from all over the world.

If you would like to buy a yacht **Brianna II — CHRIS CRAFT** or would like help answering any questions concerning purchasing, selling or chartering a yacht, please call **+1(954)274-4435**

TABLE OF CONTENTS

TABLE OF CONTENTS	2
SPECIFICATIONS	3
Overview	3
Basic Information	3
Dimensions	3
Speed, Capacities and Weight	3
Accommodations	3
Hull and Deck Information	3
Engine Information	4
DETAILED INFORMATION	5
Galley	5
Electronics	5
Head	5
Electrical Systems	5
Remarks	5
Exclusions	6
Disclaimer	6
PHOTOS	7
CONTACTS	14
Contact details	14
Telephones	14
Office hours	14
Address	14

SPECIFICATIONS

Overview

Basic Information

Category: Cruiser

Sub Category: Cabin Cruiser

Model Year: 1957

Year Built: 1957

Country: Canada

Cockpit: Yes

Dimensions

LOA: 40' 0" (12.19m)

Beam: 12' 1" (3.68m)

Min Draft: 2' 8" (0.81m)

Speed, Capacities and Weight

Water Capacity: 37 Gallons

Holding Tank: 37 Gallons

Fuel Capacity: 200 Gallons

Accommodations

Total Cabins: 1

Total Heads: 1

Hull and Deck Information

Hull Material: Wood

Hull Finish: Plastic

Engine Information

Engines: 2

Manufacturer: Chevrolet

Model: 350 CDI 5.7L

Engine Type: Inboard

Fuel Type: Gas

DETAILED INFORMATION

Galley

- Sink
- Microwave
- Alcohol Stove
- Liquor Pipeline
- Black Cherry Floor set in White Sikaflex

Electronics

- Binnacle Compass
- Lowrance LCX-19C
- Spotlight
- Full Canvas Enclosure

Head

- Sink
- Jabsco Electric Head
- Shower Lined in Sassi
- Premium Glass Java Bronze Mosaic Tile

Electrical Systems

- 115V AC Shore Power with 30 amp Receptacle
- 115V AC Distribution Panel with Blue Sea Distribution Panel with Breaker and Reverse Polarity Indicator
- 12V DC Blue Seas Distribution Panels with Breakers
- (2) Blue Seas Battery Selector Switches
- Xantrex Freedom H F/1800 Inverter
- (2) Batteries Set in Polyester / Eglass Lined Battery Boxes
- 12V DC Wire is 16 awg No. 2 Approved Marine Conduit

Remarks

Being only one of 80 ever built, she is likely the last of her kind that truly must be seen to believe. Take a step back in time with this classic, one-of-a-kind Chris Craft Sea Skiff 40 from 1957. This fully restored, museum quality vessel features twin gas inboard engines with only 85 hours.

Featured on TV and the winner of countless awards for quality, this piece of history is a once in a lifetime boat.

Exclusions

Owner's personal belongings.

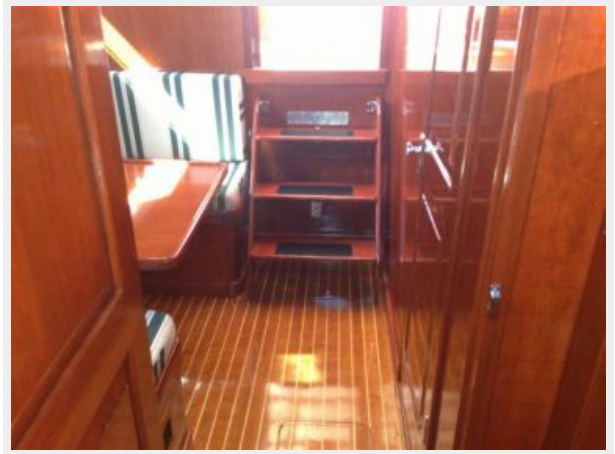
Disclaimer

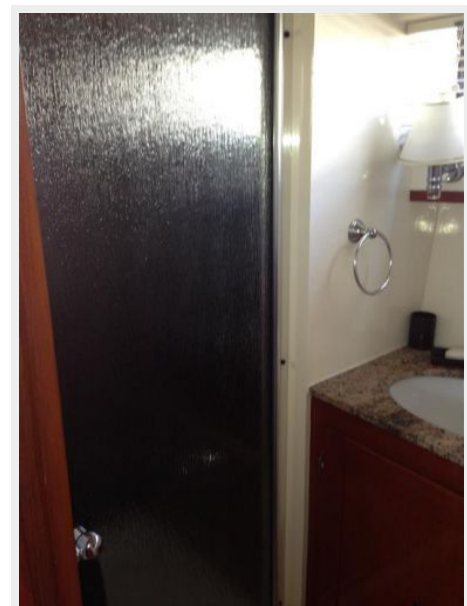
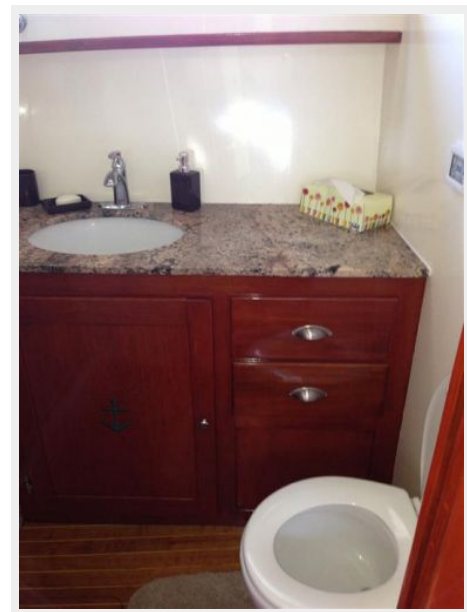
The Company offers the details of this vessel or yacht in good faith but cannot guarantee or warrant the accuracy of this information nor warrant the condition of the vessel. A buyer should instruct his representatives, agents, or his surveyors, to investigate such details as the buyer desires validated. This vessel or yacht is offered subject to prior sale, price change, or withdrawal without notice.

PHOTOS















CONTACTS

Andrey Shestakov, leading yacht broker of the sales department of Shestakov Yacht Sales Inc. Shestakov Yacht Sales Inc., the official representative of the Miami/Fort Lauderdale FL headquarters.

Contact details

Email: andrey@shestakovyachtsales.com

Web: shestakovyachtsales.com/en/

Telephones

USA: +1(954)274-4435

Office hours

Monday – Saturday: **9:00 - 21:00** EDT

Sunday: **closed**

Address



Harbour Towne Marina, 850 NE 3rd St,
STE 213, Dania, FL 33004