

KRISTINA — PRINCESS YACHTS



Builder: PRINCESS YACHTS

Year Built: 2013

Model: Motor Yacht

Price: PRICE ON APPLICATION

Location: Greece

LOA: 75' 6" (23.00m)

Beam: 17' 11" (5.44m)

Max Draft: 5' 3" (1.60m)

Cruise Speed: 26 Kts. (30 MPH)

Max Speed: 33 Kts. (38 MPH)

Our experienced yacht broker, Andrey Shestakov, will help you choose and buy a yacht that best suits your needs **KRISTINA — PRINCESS YACHTS** from our catalogue. Presently, at Shestakov Yacht Sales Inc., we have a wide variety of yachts available on our sale's list. We also work in close contact with all the big yacht manufacturers from all over the world.

If you would like to buy a yacht **KRISTINA — PRINCESS YACHTS** or would like help answering any questions concerning purchasing, selling or chartering a yacht, please call **+1(954)274-4435**

TABLE OF CONTENTS

TABLE OF CONTENTS	2
SPECIFICATIONS	3
Overview	3
Basic Information	3
Dimensions	4
Speed, Capacities and Weight	4
Accommodations	4
Hull and Deck Information	4
Engine Information	4
PHOTOS	5
CONTACTS	13
Contact details	13
Telephones	13
Office hours	13
Address	13

SPECIFICATIONS

Overview

ADDITIONAL INFO:

PROPULSION EQUIPMENT: HYDRAULIC SIDEPOWER BOW THRUSTER & STERN THRUSTER, STABILIZER ABT/TRAC ZERO, HYDRAULIC WINDLASS LEWMAR, NEW DELTA ANCHOR (2015), NEW ANCHOR CHAIN 14" – 110m

NAVIGATION EQUIPMENT: FULL RAYMARINE HYBRID TOUCH NAVIGATION EQUIPMENT AIS (WHEELHOUSE & FLYBRIDGE), RAYMARINE SOUNDER INTEGRATED INTO EXISTING SYSTEM, NAVIONICS PLATINUM PLUS XL CHART, FURUNO NAVTEX NX300

COMMUNICATION EQUIPMENT: VHF SIMRAD DSC

SAFETY & SECURITY EQUIPMENT: CCTV (ENGINE ROOM & COCKPIT), LIFERAFT (8) X2

ENTERTAINMENT EQUIPMENT: SAMSUNG FULL HD 42' IN SALON & FLAT SCREEN TVs IN CABINS, BOSE SYSTEM, DOLBY SURROUND, HOME CINEMA, APPLE DOCKING STATIONSTV, CLARION HIFI & DVD SYSTEM IN CABINS, ETC.

GALLEY EQUIPMENT: BBQ ON SUNDECK, FULL MIELE EQUIPMENT IN GALLEY, WASHING MACHINE & DRYER, DISHWASHER, ETC.

TENDER(S) & SPORTS EQUIPMENT: WILLIAMS 385 TURBOJET TENDER, YAMAHA JETSKI WAVERUNNER RACING EDITION 2013, WATERTOYS

OTHER / EXTRAS: CHERRY GLOSS INTERIOR WOOD, WATERMAKER TECNICOMAR (160lt/hr), A/C CRUISAIR TROPICAL, ELECTRIC BIMINI, HYDRAULIC BATHING PLATFORM BEZENZONI, UNDERWATER LIGHTS, PASSERELLE OPACMARE, FLYBRIDGE CRANE OPACMARE, 2 X MASTERVOLT BATTERY CHARGER 80A,V1 X INVERTER 2500 W, WINTER FLYBRIDGE COVER, MOSQUITO SCREENS, WOOD BLINDS IN CABINS, BIDET IN OWNER'S STATEROOM, HEATED TOWEL RAIL IN ALL BATHROOMS

Basic Information

Category: Motor Yacht

Sub Category: Sundeck

Model Year: 2013

Year Built: 2013

Country: Greece

Vessel Top: Bimini Top

Fly Bridge: Yes

Cockpit: Yes

Dimensions

LOA: 75' 6" (23.00m)

Beam: 17' 11" (5.44m)

Max Draft: 5' 3" (1.60m)

Speed, Capacities and Weight

Cruise Speed: 26 Kts. (30 MPH)

Max Speed: 33 Kts. (38 MPH)

Gross Tonnage: 37 Pounds

Fuel Capacity: 1 Gallons

Accommodations

Total Cabins: 4

Total Berths: 8

Sleeps: 8

Total Heads: 3

Captain Cabin: True

Crew Cabin: 2

Crew Berths: 3

Crew Sleeps: 3

Hull and Deck Information

Hull Material: GRP

Deck Material: Teak

Hull Color: White

Hull Designer: Princess Yachts

Engine Information

Engines: 2

Manufacturer: Caterpillar

Model: C32

Engine Type: Inboard

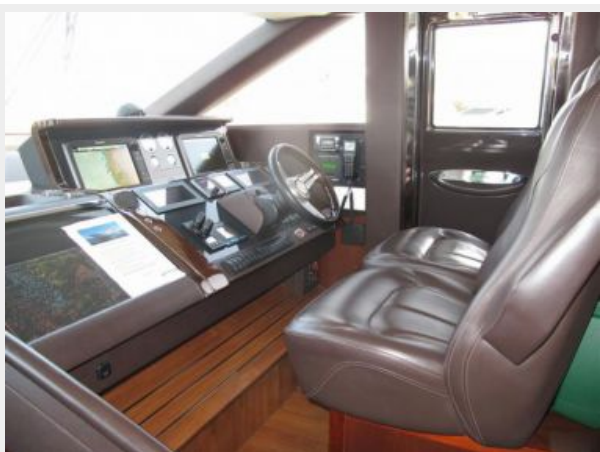
Fuel Type: Diesel

PHOTOS

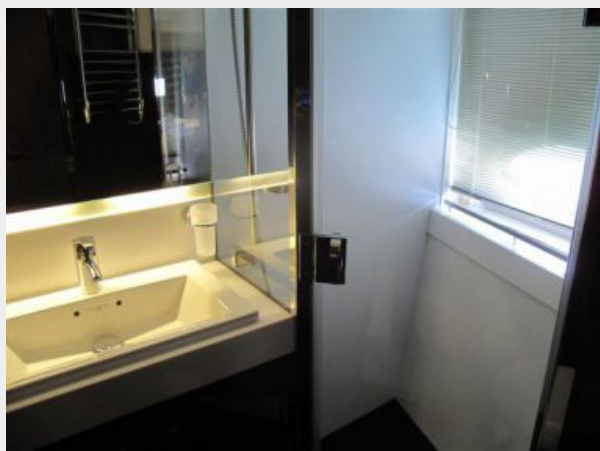
















CONTACTS

Andrey Shestakov, leading yacht broker of the sales department of Shestakov Yacht Sales Inc. Shestakov Yacht Sales Inc., the official representative of the Miami/Fort Lauderdale FL headquarters.

Contact details

Email: andrey@shestakovyachtsales.com

Web: shestakovyachtsales.com/en/

Telephones

USA: +1(954)274-4435

Office hours

Monday – Saturday: **9:00 - 21:00** EDT

Sunday: **closed**

Address



Harbour Towne Marina, 850 NE 3rd St,
STE 213, Dania, FL 33004