

MARRI YACHT — HATTERAS



Судостроитель: HATTERAS

Год постройки: 2008

Модель: Катер для спортивной рыбалки

Цена: ЦЕНА ЯХТЫ ПО ЗАПРОСУ

Местонахождение: United States

Длина общая: 64' 0" (19.51m)

Ширина: 19' 6" (5.94m)

Мин. осадка: 4' 10" (1.47m)

Купить **MARRI YACHT — HATTERAS** а также выбрать подходящую вам яхту из нашего каталога яхт вам поможет опытный яхтенный брокер Андрей Шестаков. На сегодняшний день компания **Shestakov Yacht Sales Inc.** имеет большое количество яхт в собственном списке продаж, а также тесно сотрудничает со всеми крупными яхтенными производителями по всему миру.

Для того чтобы купить яхту **MARRI YACHT — HATTERAS** а также проконсультироваться по любому вопросу связанному с покупкой, продажей, чартером яхт позвоните по телефону **+7(918)465-66-44**.

ОГЛАВЛЕНИЕ

ОГЛАВЛЕНИЕ	2
ХАРАКТЕРИСТИКИ	6
Обзор	6
Основная информация	6
Размеры	6
Скорость, вместимость и масса	6
Размещение	7
Корпус и палуба	7
Информация о двигателе	7
ПОДРОБНОЕ ОПИСАНИЕ	8
Salon & Galley	8
Galley Equipment	8
Master Stateroom & Master Head	8
Foreward Stateroom	9
Foreward Stateroom Head	10
Port Stateroom	10
Guest Head	10
Enclosed Flybridge	10
Fly Bridge Equipment	11
Cockpit/Fishing Equipment	11
Deck Equipment	12
Engine Room	12
Color	12
Exclusions	12
Manufacturer Provided Description	13
Исключения	13
Отказ от ответственности	13
ФОТОГРАФИИ	14

Profile Underway	14
Profile - Starboard	14
Bow	14
Profile - Stern	14
Bow	14
Salon	14
Salon	15
Salon	15
Salon	15
Salon - Galley	15
Salon	15
Salon - Galley	15
Galley - Dinette	16
Galley	16
Galley	16
Galley	16
Galley Storage Room	16
Galley Storage Room	16
Stereo Rack	17
Salon	17
Hallway	17
Master Stateroom	17
Master Head	18
Master Stateroom	18
Hallway	18
Starboard Twin	18
Starboard Twin Head	19
Forward VIP	19
Forward VIP	19

Forward VIP	19
Washer & Dryer	20
Stairway to Pilot House	20
Captain's Chair	20
Pilot House	20
Pilot House	21
Pilot House	21
Pilot House Seating	21
Pilot House Seating	21
Pilot House Seating	21
Pilot House Seating	21
Aft Bridge Deck	22
Aft Bridge Deck	22
Aft Bridge Deck	22
Stairway to Cockpit	22
Satellite TV Boxes	22
Engine Room	22
Engine Room	23
Engine Room	23
Engine Room	23
Engine Room	23
Engine Room	23
Engine Room	23
Engine Room	23
Water Maker	24
Engine Room	24
Engine Room	24
Water Maker	24
Cockpit	25
Cockpit	25

Cockpit	25
Cockpit	25
Stern	25
КОНТАКТЫ	26
Контактная информация	26
Телефоны	26
Время работы	26
Адрес	26

ХАРАКТЕРИСТИКИ

Обзор

Just brought down from the Great Lakes in October, MARRI YACHT stands alone as a fresh water since new, one owner 64 EB that has seen use and care second to none! Her owner since new is meticulous, and has spared no expense to keep this lightly used 64 in tip top shape. She has never been fished and is equipped with a swim platform and Freedom Lift tender lift for effortless cruising with or without a tender.

MARRI YACHT was pre-surveyed at the end of October 2014 and you are welcome to a copy if interested.

Основная информация

Тип судна: Катер для спортивной рыбалки

Подкатегория: Convertible

Модельный год: 2008

Год постройки: 2008

Страна: United States

Открытая палуба мостика: Да

Кубрик: Да

Размеры

Длина общая: 64' 0" (19.51m)

Ширина: 19' 6" (5.94m)

Мин. осадка: 4' 10" (1.47m)

Скорость, вместимость и масса

Водоизмещение: 115000 Pounds

Вместимость воды: 343 Gallons

Вместимость сточного бака: 125 Gallons **Объем топливного бака:** 2008 Gallons

Размещение

Всего кают: 3

Всего коек: 4

Спальные места: 6

Всего ком. состава: 4

Корпус и палуба

Материал корпуса: Fiberglass

Отделка корпуса: Plastic

Информация о двигателе

Двигатели: 2

Производитель: Caterpillar

Модель: C-32A

Тип двигателя: Inboard

Тип топлива: Diesel

ПОДРОБНОЕ ОПИСАНИЕ

Salon & Galley

- African mahogany high-gloss wood throughout
- Raised panel cabinet door selection in galley and salon
- Carpet runners in salon and hallway
- Pneumatic sliding door, aft salon
- Beige Fabrica luxury carpet
- Amtico galley and dinette flooring, 2 ½" strips teak with ¼" Beech accent strips
- Salon/galley cornice, flute finished wood
- Salon/galley blinds (Hunter Douglas) 3/8" high-gloss mahogany with easy rise
- Dinette upholstery Destiny Wheat back, Onyx Black seat
- Fabrica carpet
- Salon sectional sofa with optional u-shape with rod and tackle storage in Destiny Harvest Gold
- Salon/dinette throw pillows
- Galley/dinette countertops Old Gold granite with bullnose edge
- Whirlpool gold ice maker aft salon
- Panasonic 42" flatscreen television
- Audio/video system
- Fluted wood valances with A/C ventilation
- HD satellite television
- Décor scheme Espresso

Galley Equipment

- (2) Drawer sub-zero refrigerator
- (2) Drawer sub-zero freezer
- Kenmore dishwasher
- Kitchen Aid (4) burner cooktop
- Sharp carousel convection/microwave oven
- Side-by-side sink with incinerator garbage disposal
- Single lever Moen faucet
- Soap dispenser
- Hood vent and light
- Washer and dryer in hallway

Master Stateroom & Master Head

- Fabrica Carpet, Cashew

- Full-beam master layout
- King-size bed with Bessin Onyx pillows
- Master stateroom headboard, Bessin Onyx
- Master stateroom berth base, Whisperwall
- Master stateroom padded panel hullsiding, Whisperwall, Cachet Wheat
- Master stateroom aft bulkhead with a clear plexi mirror
- Master stateroom cornice with fluted finished wood
- Master stateroom soffit, aft bulkhead Whisperwall
- Custom master stateroom functional roman shades
- Master stateroom lamps (2) lamp and shades
- Master stateroom flat screen television
- Master head countertops Old Gold with bullnose edge
- Master head floor Amtico 2 1/2" strips teak with 1/4" Beech accent strips
- High-gloss mahogany wood
- Port and starboard 6-drawer high-gloss mahogany wood dressers
- Port and starboard nightstands
- Whisperwall headliner
- Port and starboard hullside porthole windows
- (3) Hanging cedar-lined closets
- Cruisair SMX a/c controls
- Vanity mirror with (2) medicine cabinets
- Mirrored ceilings
- Headhunter Royal Flush toilet
- Large stall shower
- Avonite countertops

Foreward Stateroom

- Bow stateroom arrangement queen-berth
- Fabrica carpet
- Designer berth covers
- (2) Built-in high-gloss mahogany nightstands with (2) drawers
- Padded panel hullsiding, Whisperwall Cachet Wheat
- Bow stateroom headboard – wrapped
- Forward bulkhead clear plexi-glass mirror
- Wall coverings Whisperwall
- Skylight hatch with shade above berth
- Built-in high-gloss mahogany cabinetry with shelving port and starboard above bed
- Large cedar-lined linen closet with (4) shelves to port
- Cruisair SMX A/C controls
- Sharp Aquos television

Foreward Stateroom Head

- Amtico flooring
- Countertop (Avonite) gloss with bullnose edge
- Head flooring Amtico 2 ½” strips with Beech ¼” strips
- High-gloss mahogany wood cabinets under sink
- Skylight with shade
- Two-door mirrored medicine cabinet above sink
- Mirrored overhead ceiling
- Headhunter Royal Flush toilet
- Curved shower stall

Port Stateroom

- (2) Single berths
- Built-in high-gloss mahogany nightstand with 3-drawers between berths
- Large mirror and upholstered headboard
- Cruisair SMX a/c controls
- Cedar-lined hanging closet
- Whisperwall wall coverings in Cachet Wheat
- Fluted wood valances
- (4) High-gloss mahogany cabinets above port berth with shelving

Guest Head

- Head flooring Amtico 2 ½” strips teak and ¼” Beech strips
- Head countertop (Avonite) gloss with bullnose edge
- Mirrored two-door medicine cabinet above sink
- Curved shower stall
- Headhunter Royal Flush toilet
- High-gloss mahogany cabinet with shelving below sink
- Sharp Aquos television

Enclosed Flybridge

- Single STIDD chair, black
- Table for lounge, tabletop Old Gold with bullnose edge
- Overhead hatch with privacy covers
- Whisperwall headliner and wall coverings in Cachet Wheat
- High-gloss mahogany paneling
- High-gloss mahogany cabinetry to starboard for storage, countertop Old Gold granite with

bullnose edge

- U-Line refrigerator with icemaker
- Chrome sink and faucet
- Fluted wood valances with A/C ventilation
- Fabrica Carpet, Cashew
- Padded windshield – Whisperwall, Cachet Wheat
- Cornices, fluted finished wood
- Console laminate face, Black matte
- Sliding full glass door
- CruisAir air conditioning
- AMX A/C controls
- Teak steps to bridge with custom stainless steel railing
- (2) Windshield wipers/washers with controls
- Lounge and riding seat upholstered
- Throw pillows
- Helm pod (aft helm station)
- Exterior flybridge mezzanine with Sunbrella cushions
- Flybridge instrument cover (aft helm station)

Fly Bridge Equipment

- (2) Furuno NavNet 72 mile radar/plotter
- (3) ZEP 12.1 flatscreen displays
- Furuno GPS/WAAS navigator
- Furuno RD30 speed-distance-depth
- (2) Icom IC-M604 VHF's
- Vetus bow thruster
- Hatteras alarm system
- Tank tender
- Simrad AP26 auto pilot
- Ritchie compass
- KVH Tracvision M5 satellite television

Cockpit/Fishing Equipment

- Molded fiberglass 164 sq. ft.
- Drop-down wing station with clutch and throttle controls, mezzanine
- Lift up coaming gate
- Vertical tackle center, lower mezzanine
- Teak mezzanine deck
- Cockpit coaming lights
- Standard freezer and inboard storage box-cockpit

- Corner transom hawsers
- Pompanette wing board rod holders
- Cockpit table with (4) chairs
- Seating with cushions across mezzanine
- Shore water connections with pressure reducing valves and Hatteras patented quick disconnect – one on each side
- Polished anodized aluminum ladder to flybridge
- DC overhead lights under flybridge overhand
- (4) Polished stainless steel rod holders, flush mount
- Storage in steps to deck house with chill box in top step
- Underwater lights
- (2) In-deck fish box with macerator
- Swim platform
- Freedom lift
- Glendinning Cablemaster

Deck Equipment

- Fiberglass pulpit and windlass
- Windlass upgraded to 300 ft. 3/8 chain with divider
- Bow rails
- Cockpit cameras

Engine Room

- Fuel tanks: 822 gallons - forward keel, 444 gallons - aft keel, 371 gallons - port outboard, 371 gallons - starboard outboard
- Onan generator, 27.5 kw, 1551 hours
- Aquatic H₂O maker, Sea Recovery
- Elbex CCTV camera
- Craftsman toolbox

Color

- Exterior – White
- Interior – White
- Boot stripe - Black

Exclusions

Exclusions to include, but not limited to, tender and owner's personal belongings. If requested at time of sale, a complete list will be provided.

Manufacturer Provided Description

The Hatteras 64 Convertible features an unprecedented array of sophisticated features, including Hatteras' advanced convex hull design for smooth ride and optimum performance, best-in-class specifications, high-tech solutions to propulsion and ship's systems challenges, and spacious accommodations ideal for self-sustaining fishing in distant waters. The 64 features a forced air induction system that virtually eliminates saltwater intrusion into the engine compartment, and increases space outboard of the engines. Trim tabs are mounted inside the propeller tunnels to achieve the same trim adjustment with just 30 percent of the surface area of conventional trim tabs. And the advanced convex hull shape harnesses the energy of today's high horsepower engines to deliver a smooth ride, peak performance and improved stability, while several patent-pending propulsion developments like cylindrical shaft keys and crosscut bearings extend the life of the boat's running gear. The 64's standard 3/3 arrangement consists of three staterooms and three heads, with the only full-beam master stateroom in its size range. Throughout, the emphasis is on spacious and luxurious accommodations ideal for relaxation or entertaining.

Исключения

При продаже яхты исключаются личные вещи владельца.

Отказ от ответственности

Компания предоставляет описание судна или яхты добросовестно, но не может гарантировать точность этой информации, а также не ручается за техническое состояние. Покупатель должен проинструктировать своих агентов или оценщиков исследовать представленную информацию более подробно, по собственному желанию. Продажа судна или яхты, изменение цены или снятие с продажи будет происходить без предварительного уведомления.

ФОТОГРАФИИ

Profile Underway



Profile - Starboard



Profile - Stern



Bow



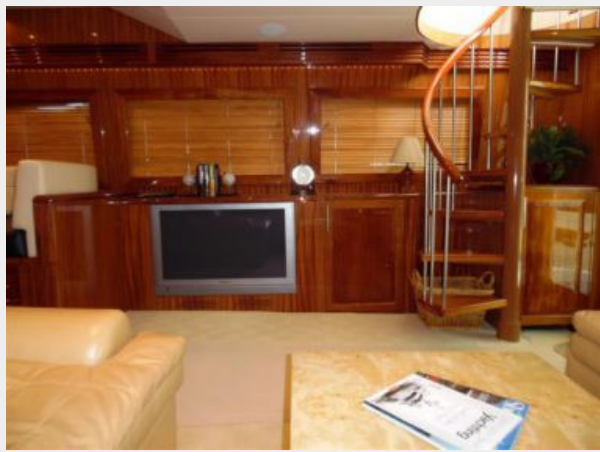
Bow



Salon



Salon



Salon



Salon



Salon - Galley



Salon



Salon - Galley



Galley - Dinette



Galley



Galley



Galley



Galley Storage Room



Galley Storage Room



Stereo Rack



Salon



Hallway



Master Stateroom



Master Stateroom



Master Head



Hallway



Starboard Twin



Starboard Twin Head



Forward VIP



Forward VIP



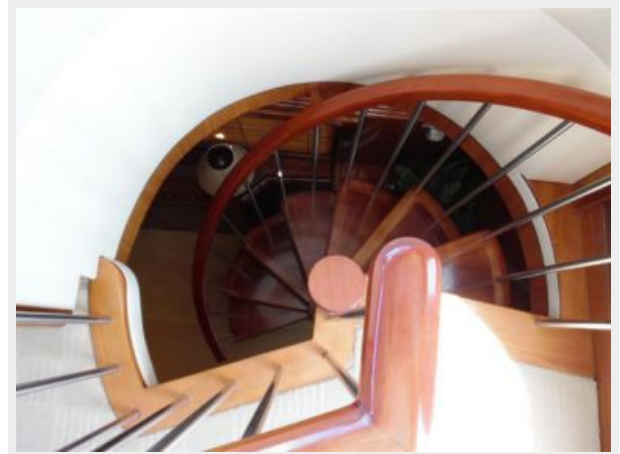
Forward VIP



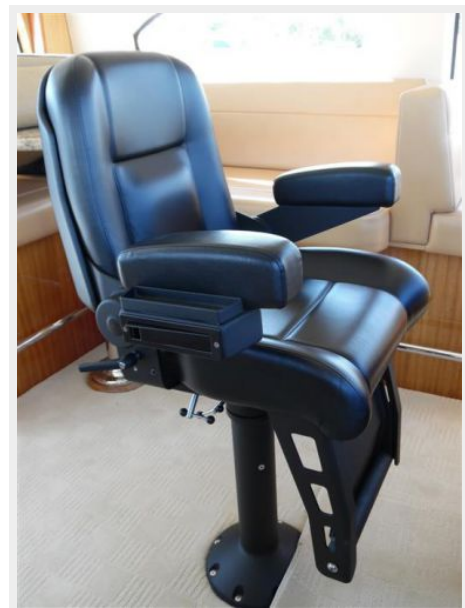
Washer & Dryer



Stairway to Pilot House



Captain's Chair



Pilot House



Pilot House



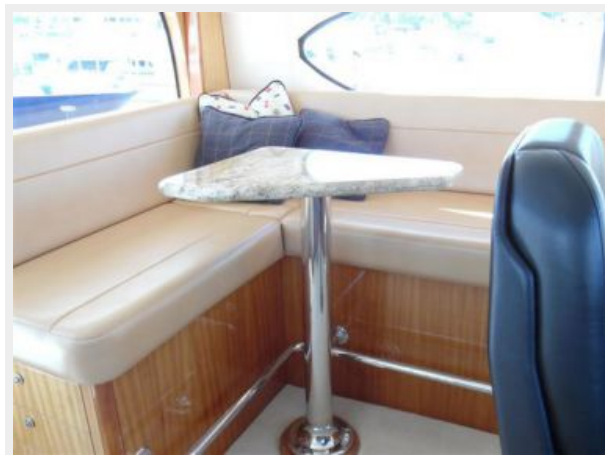
Pilot House



Pilot House Seating



Pilot House Seating



Pilot House Seating



Pilot House Seating



Aft Bridge Deck



Aft Bridge Deck



Aft Bridge Deck



Stairway to Cockpit



Satellite TV Boxes



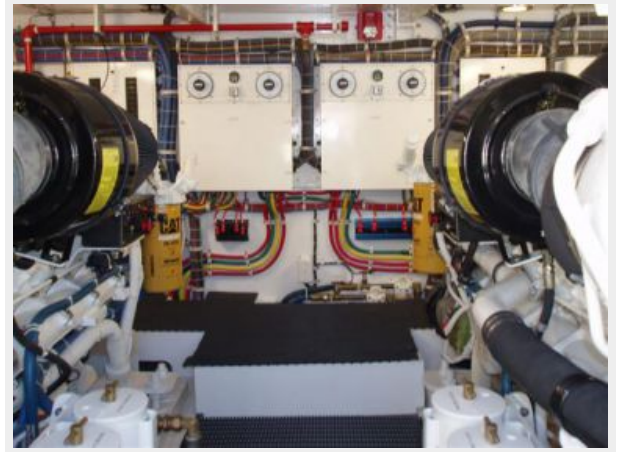
Engine Room



Engine Room



Engine Room



Engine Room



Engine Room



Engine Room



Engine Room



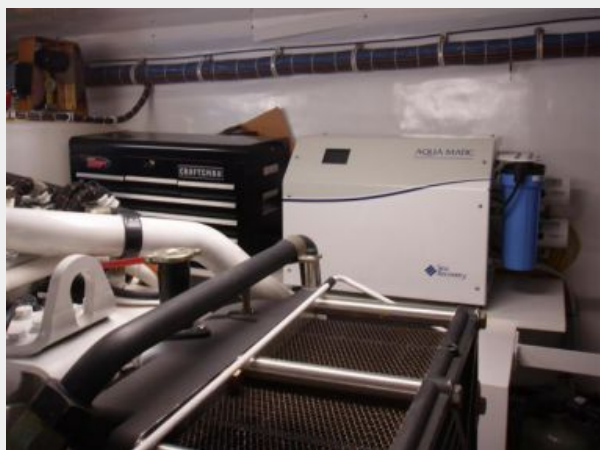
Engine Room



Water Maker



Engine Room



Water Maker



Cockpit



Cockpit



Cockpit



Cockpit



Stern



КОНТАКТЫ

Андрей Шестаков (Andrey Shestakov) – ведущий яхтенный брокер отдела продаж яхт и судов компании Shestakov Yacht Sales Inc. Официальный представитель Shestakov Yacht Sales Inc. для русскоговорящих клиентов в центральном офисе компании в Майами/Форт Лодердейл/Флорида/США.

Контактная информация

Email: andrey@shestakovyachtsales.com

Web: shestakovyachtsales.com

Телефоны

Краснодарский край: **+7(918)465-66-44**

США, Майами, Флорида: **+1(954)274-4435**

Время работы

Понедельник – Суббота: **9:00 - 21:00**
EDT

Воскресенье: **Закрито**

Адрес



Harbour Towne Marina, 850 NE 3rd St,
STE 213, Dania, FL 33004