

SUN ARK — HEESEN YACHTS



Судостроитель: HEESEN YACHTS

Год постройки: 1995

Модель: Моторная яхта

Цена: ЦЕНА ЯХТЫ ПО ЗАПРОСУ

Местонахождение: United States

Длина общая: 120' 8" (36.78m)

Ширина: 23' 5" (7.14m)

Мин. осадка: 5' 2" (1.57m)

Крейс. скорость: 35 Kts. (40 MPH)

Макс. скорость: 41 Kts. (47 MPH)

Купить **SUN ARK — HEESEN YACHTS** а также выбрать подходящую вам яхту из нашего каталога яхт вам поможет опытный яхтенный брокер Андрей Шестаков. На сегодняшний день компания **Shestakov Yacht Sales Inc.** имеет большое количество яхт в собственном списке продаж, а также тесно сотрудничает со всеми крупными яхтенными производителями по всему миру.

Для того чтобы купить яхту **SUN ARK — HEESEN YACHTS** а также проконсультироваться по любому вопросу связанному с покупкой, продажей, чартером яхт позвоните по телефону **+7(918)465-66-44**.

ОГЛАВЛЕНИЕ

ОГЛАВЛЕНИЕ	2
ХАРАКТЕРИСТИКИ	3
Основная информация	3
Размеры	3
Скорость, вместимость и масса	3
Размещение	3
Корпус и палуба	4
Информация о двигателе	4
ПОДРОБНОЕ ОПИСАНИЕ	5
Accommodations	5
Deck Equipment	6
Electronics	7
Entertainment Systems	7
Galley/Laundry	8
Mechanical Equipment	8
Fuel Consumption	9
Remarks	9
Исключения	9
Отказ от ответственности	9
ФОТОГРАФИИ	10
КОНТАКТЫ	13
Контактная информация	13
Телефоны	13
Время работы	13
Адрес	13

ХАРАКТЕРИСТИКИ

Основная информация

Тип судна: Моторная яхта

Модельный год: 1995

Год постройки: 1995

Год обновления: 2014

Страна: United States

Открытая палуба мостика: Да

Размеры

Длина общая: 120' 8" (36.78m)

Ширина: 23' 5" (7.14m)

Мин. осадка: 5' 2" (1.57m)

Скорость, вместимость и масса

Крейс. скорость: 35 Kts. (40 MPH)

Дальность на крейсерской скорости:
2000

Макс. скорость: 41 Kts. (47 MPH)

Вместимость воды: 1241 Gallons

Объем топливного бака: 9000 Gallons

Размещение

Всего кают: 4

Спальные места: 8

Каюта капитана: Да

Каюты экипажа: 3

Койки экипажа: 6

Корпус и палуба

Материал корпуса: Fiberglass

Материал палубы: Teak

Дизайнер корпуса: Frank Mulder

Дизайнер экстерьера: Frank Mulder

Дизайнер интерьера: Art Line

Информация о двигателе

Двигатели: 3

Производитель: MTU

Модель: 2x16v396tb94 / 1x12V396TB94

Тип двигателя: Inboard

Тип топлива: Diesel

ПОДРОБНОЕ ОПИСАНИЕ

Accommodations

"SUN ARK" comfortably sleeps eight owners and guests in four luxurious suites, each with private en-suite baths. Crew accommodations are for up to six in three cabin areas and completely separated from the owner and guest suites. The owner's suite is the full width of the vessel, amidships and forward of the engine room and all of the other guest suites. The owner's suite features a centerline king size "island" bed, with two drawers underneath, a built in mirrored glass vanity, four oversized port lights, "his" and "hers," built in side tables, built in settee sofa, built in key safe, four large side by side closets and, direct and indirect lighting. Two completely separate air conditioning controls. There is also a private adjoining bath en-suite featuring a large Jacuzzi hot tub with shower all in gold plating, a separate stall shower with built in seat, two sinks with gold fixtures and fittings, as well as a toilet and bidet in a separate room. The bath features magnificent blue onyx, rare Myrtle Burle wood from Asia, all in a high gloss lacquer finish. The comfortable soft goods are in earth tones. A 42" plasma Television with Hughes satellite television system and Pioneer XV-DV55 DVD player, a Kenwood AM/FM CD player and a built in refrigerator round out the owner's luxurious amenities. Moving aft through a semi circular companionway are three guest suites all finished to a high standard of finish and magnificently appointed. Two of the guest suites feature queen sized "island" walk around beds. One has two, twin sized, lower berths and each has a full size adjoining bath "ensuite" with a full size shower, toilet, lighted vanity and sink. Each stateroom also has two large port lights (plus one in each bath), large wardrobe closets, lighted vanities, storage cabinets and separate entertainment systems including flat screen TV'S, AM/ FM/CD Stereos, DVD/ VCR players and direct and indirect lighting. All of the guest accommodations are finished with the very rare Myrtle Burle wood, custom wool carpet and beautiful fabrics throughout. Up from the owner & guest accommodations via a gradual built in, spiral stair case is a huge, full width, main salon and this same stairway also continues to the vessels Sky Lounge on the third level. The main salon of "SUN ARK" has an open spacious feeling. There are over-sized picture windows, a large full-sized built-in granite bar with four custom bar stools, a writing desk with book shelves and file cabinets, a large, super stuffed, sofa with custom glass cocktail table. The wool wall-to-wall carpet compliments the highly finished Asian burle wood (all the same tree), glove beige leather bar stools and bar trim, fabric curtains and black out shades in soft earth tones. Forward of the main salon is a semi-private dining salon with a custom circular dining table with seating for 8. The galley is conveniently located forward of the dining salon which has buffet counters and built in china and crystal storage cabinets. Forward is a full size on deck powder room with marble floors, imported from Italy. In the aft of the main salon by the writing desk is a solid marble compass floor design and a double wide Stainless Steel and glass door side opening to the huge open aft deck area. The aft salon is fully covered and features new teak decks (2003), a large solid teak dining table with seating for eight. The wet bar is equipped with a large refrigerator and ample storage. The aft deck is has a large euro-transom that allows easy access to water sports. Up the custom circular stairways (inside the yacht or outside from the aft deck) one can visit the third deck, SKYLounge, and the upper aft deck bridge. The forward area of the

bridge deck has a state of the art high-speed helm control station. The helm is all black with wrap around visibility and controls. There is a high TEC command helm, a matching co-pilot pedestal seat, (both with electric controls and the Captain's having a built-in electronic tiller). For the owner and guests there is a U shaped built-in settee with a matching built-in table all in burlewood and leather. Aft of the bridge, in the same room, is a SKYLounge also with built-in seating high/low table, a writing/computer desk, two swiveling occasional chairs, a complete entertainment system including a pop up (electric) 42" plasma TV and a full size private bathroom. Outside the glass doors is the entertainment area. First there is a large built-in wet bar with three custom built swivel chairs. Across is a "U" shaped settee which seats eight and features a dining table is a new built-in barbeque. To round out the area is a huge built-in sun pad with built-in Jacuzzi hot tub and new teak decks. Unlike all other Norship/Heesen yachts "SUN ARK" has an extended bridge deck making this area over 35% larger than all other luxury high-speed yachts of its size.

Deck Equipment

- MUIR 5000 hydraulic anchor windlass
- 400' 3/4" galvanized European anchor chain 104 KG (260 lbs) custom anchor
- (2) NIBEL 160 litre 6 kW hot water heaters in forepeak
- (2) SIHI pressure water pumps and accumulator (fresh water wash down)
- (3) Position saltwater fire fighter system for Det Norski 1 A1 class
- H+H pre air conditioner (pure air systems) port & starboard pneumatically operated outside doors
- Crew entrance door (separate)
- (2) Stainless Steel fender holders
- (2) Boarding entrances on bow, port, and starboard
- Aft deck full steering station (including bowthruster, ACR search light, horn, full water jet and full MTU controls)
- (2) MUIR 24-volt electric captains (warping winches) aft deck
- (2) Aft deck boarding entrances
- Engine room access and storage
- Emergency Fire Room Exit
- Emergency Fire Activation System for Engine Room (CO2)
- Euro Transom with integral swim platform
- Two internal gas assisted garages housing two Sea Doo waverunners (2014)
- Complete vessel hookup with water, shore power, telephone, television and cable
- Custom low profile stainless steel handrails (oversize 1-1/2") through entire yacht
- Rear engine room entrance
- Fresh water aft deck wash down
- Aft deck fire fighting system
- Two Coast Guard life rings with strobe lights
- EPIRB
- Custom Stainless Steel circular stairway up from aft deck salon

- EV 10 person canister life rafts with current certificate
- (6) Person built in Jacuzzi hot tub on upper deck with electric heater
- Stainless Steel Profile gas barbeque
- 2 x Sea Doos 90hp and new launch systems (4/14)

Electronics

- Nobeltec 2014
- New Cellular Internet Access System - PepWave BR-1
- FURUNO 1510 High speed RADAR 96 Mile (2003) - renewed 2014
- FURUNO FTC-1 36 mile RADAR
- SIMRAD HS 50 Electronic Gyro Compass
- Simrad AP-70, New 2014
- NAIAD 60hp Hydraulic Bow Thruster (2003) - 2015 rebuilt
- Two FURUNO FCV-582 Color Depth Sounders
- Fire Alarm system for entire yacht (2003) - renewed 2015
- NAIAD Marine Carbon Fibre Trim Tabs
- Two ICOM M VHF radio telephones - IC-M504 (2015)
- NERA Fleet 77 Worldwide SAT COM (with high speed data Mini M and Packet Data
- PAKRAT DATA
- ACR Searchlight (Electronic Remote control) - renewed 2015
- B&G Hydra 2000 Wind-speed-depth Indicators
- Two NORTHSTAR 941 GPS units
- Two OPTIPLEX SX-260 Navigation Network Monitoring Computers
- OPTIPLEX GX 260 Dell Communications Network Computer
- Two Northern Lights 55kW Generators w/ sound shields and electronic governors
- Two 25kVA Multi voltage AC Converters, renewed 2014
- Three MASTER VOLT 2.5kW Inverters - new 2013
- Five MASTER VOLT 24 V Battery Chargers - new 2013
- 3200 Amp hours of Gel Batteries - new 2013
- SEPAR 2002 diesel polisher 500 gph
- MarineAir 20 ton (2x10 ton) chilled water remote monitored air conditioning system (2014)
- Village Tec 2000 gpd reverse osmosis water maker
- Hydraulic control system entire yacht (new 2014)

Entertainment Systems

- SEATEL TAC 92 Satellite Television System for entire yacht (5 receivers)
- Two 42" LG Televisions (new 4/2014)
- Pioneer VSX -908S digital processor and multi-channel receiver

- DV-F727 100 CD player
- DD - F 908 100 CD player
- JVC Pro-cision HQ quality VHS player
- (5) Direct TV systems
- (8) speaker custom surround sound system in main salon
- (4) speaker custom surround sound system in SKY LOUNGE
- Mitsubishi 5-VHS player
- Pioneer-DV-C503 DVD player
- SX - D909S Audio - Video multi channel receiver
- Hughes Direct TV Satellite Receiver
- NEC 42" Plasma Television Plasma Sync 42 MPI
- Four Built in surround sound speaker

Galley/Laundry

- Gaggenau 6-burner electric stove
- Gaggenau convection/ traditional electric oven
- Gaggenau electric extraction fan
- Gaggenau microwave/ convection oven
- Gaggenau electrical stainless steel dishwasher
- Gaggenau electric refrigerator/ freezer
- Miele (2) refrigerator - 2014
- Broan trash compacter
- GE garbage disposal
- Triple stainless steel sinks
- Kenwood mixer
- (3) Rowenta coffee makers
- Pioneer AM/ FM CD stereo
- Simac ice cream maker
- Burlewood cabinets in birdseye maple
- Miele clothesdryer

Mechanical Equipment

- Two MTU 16V396TB94 (3500 HP EACH) Engines with KA ME WA 36S11 water jets
- One MTU 12V 396TB94 (2560 HP) KA ME WA 40B
- Separ 2002 Diesel Polishing system
- Village Tec 2000 GPD Reverse Osmosis Water Maker
- New Marine Air 20 Ton (2X10 ton) Chilled Water Remotely monitored Air Conditioning
- New Hydraulic Control Unit for system controlling entire yacht
- (2) Generators - Hours: Port 7,637 - Starboard 7,637
- 2 x new VHF

- New Simrad autopilot w/AIS
- Jets rebuilt 2012, rebuilt all operational hydraulic cylinders. Center jet rebuilt 2015
- New AC ducts (4/14)
- Engines: 28 knots / 41 knots (3 engines) - 22 knots / 30 knots (2 engines)
- Engine Hours: Port Main: 2,725 hours - Starboard Main: 1,770 hours - Center Main: 1,453 hours
- Updated electrical panel in engine room
- New batteries (4/14)
- New battery chargers (4/14)

Fuel Consumption

- 150 - 200 gph @ 15 knots
- 300 gph @ 35 knots (cruising speed)
- 400 gph @ 40-45 knots (top speed)

Remarks

- New bottom system September 2010, including peel & vacuum bagging over any void areas
- Replace of Salon windows eliminating aluminum frames - September 2010
- Replating interior fixtures - September 2010
- New Flat Screen TV's
- New Surround Sound system with IPod docks
- Engines serviced by Detroit/MTU - September 2014
- New Sun Top on Upper deck

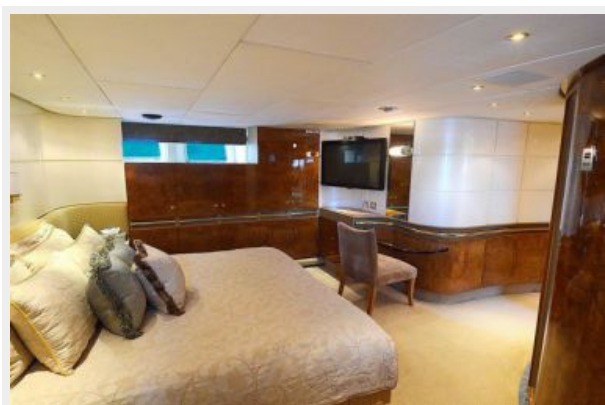
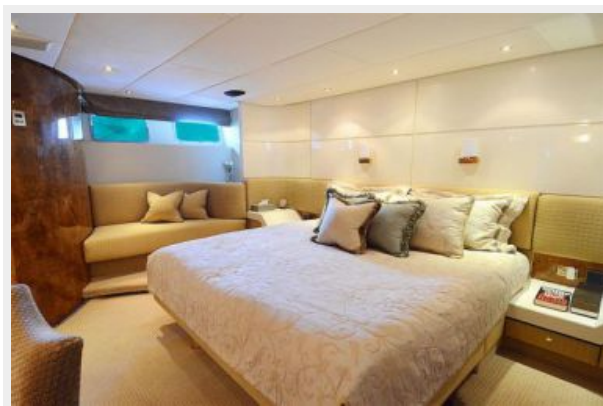
Исключения

При продаже яхты исключаются личные вещи владельца.

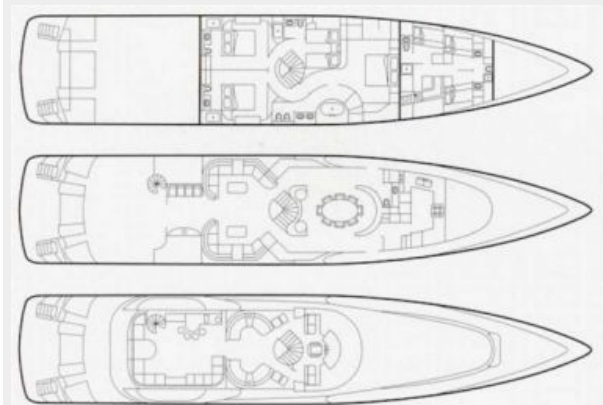
Отказ от ответственности

Компания предоставляет описание судна или яхты добросовестно, но не может гарантировать точность этой информации, а также не ручается за техническое состояние. Покупатель должен проинструктировать своих агентов или оценщиков исследовать представленную информацию более подробно, по собственному желанию. Продажа судна или яхты, изменение цены или снятие с продажи будет происходить без предварительного уведомления.

ФОТОГРАФИИ







КОНТАКТЫ

Андрей Шестаков (Andrey Shestakov) – ведущий яхтенный брокер отдела продаж яхт и судов компании Shestakov Yacht Sales Inc. Официальный представитель Shestakov Yacht Sales Inc. для русскоговорящих клиентов в центральном офисе компании в Майами/Форт Лодердейл/Флорида/США.

Контактная информация

Email: andrey@shestakovyachtsales.com

Web: shestakovyachtsales.com

Телефоны

Краснодарский край: **+7(918)465-66-44**

США, Майами, Флорида: **+1(954)274-4435**

Время работы

Понедельник – Суббота: **9:00 - 21:00**
EDT

Воскресенье: **Закрито**

Адрес



Harbour Towne Marina, 850 NE 3rd St,
STE 213, Dania, FL 33004