

SUHAILI — CUSTOM



Судостроитель: CUSTOM

Год постройки: 1999

Модель: Катамаран

Цена: ЦЕНА ЯХТЫ ПО ЗАПРОСУ

Местонахождение: United States

Длина общая: 62' 0" (18.90m)

Ширина: 27' 0" (8.23m)

Макс. осадка: 3' 5" (1.04m)

Купить **Suhaili — CUSTOM** а также выбрать подходящую вам яхту из нашего каталога яхт вам поможет опытный яхтенный брокер Андрей Шестаков. На сегодняшний день компания **Shestakov Yacht Sales Inc.** имеет большое количество яхт в собственном списке продаж, а также тесно сотрудничает со всеми крупными яхтенными производителями по всему миру.

Для того чтобы купить яхту **Suhaili — CUSTOM** а также проконсультироваться по любому вопросу связанному с покупкой, продажей, чартером яхт позвоните по телефону **+7(918)465-66-44**.

ОГЛАВЛЕНИЕ

ОГЛАВЛЕНИЕ	2
ХАРАКТЕРИСТИКИ	3
Обзор	3
Основная информация	7
Размеры	7
Скорость, вместимость и масса	7
Размещение	7
Корпус и палуба	7
Информация о двигателе	7
ФОТОГРАФИИ	8
КОНТАКТЫ	19
Контактная информация	19
Телефоны	19
Время работы	19
Адрес	19

ХАРАКТЕРИСТИКИ

Обзор

62 Ft. MALCOLM TENNANT POWER CATAMARAN

BUILDER: Cat Craft

MODEL: Custom Pilothouse

LOA: 62Ft.

BEAM: 27 Ft.

DRAFT: 3 Ft. 5 In.

CRUISE/MAX: 15/20

ENGINES: 2 x Cummins Diesel 6BT 5.9 L/ 210 Hp 2700 Hrs.

FUEL CAPACITY: 1400 Gal.

WATER CAPACITY: 500 Gal.

HOLDING CAPACITY: 500 Gal.

GASOLINE TANK: 50 Gal.

HULL MATERIAL: Composite

DISPLACEMENT: 40,000 Lbs.

LOCATION: West Palm Beach, Florida

Because of the like new condition, it's excellent design and construction, SUHAILI is a very special vessel that can do many things very well. It will suit a broad list of owners needs, efficiency, space, comfort, safety and the ability to adapt to any need.

The amazing equipment list and immaculate wiring and plumbing give a sense of security and value. **Boat Name** Suhaili **Dimensions** Displacement: 40000 lbs **Engines** Engine 1: Engine Brand: Cummins Engine Model: 6BT Engine Type: Inboard Engine/Fuel Type: Diesel Location: Starboard Drive Type: V Drive Engine(s) Total Power: 210 HP Engine 2: Engine Brand: Cummins Engine Model: 6BT Engine Type: Inboard Engine/Fuel Type: Diesel Location: Port Drive Type: V Drive Engine(s) Total Power: 210 HP

INTRODUCTION

SUHAILI, a Malcolm Tenant design, is a world cruising shallow draft catamaran with lovely lines. Superb fuel efficiency with long range capability. The boat has a well laid out interior with excellent natural ventilation, and an alternative AC system. There is a large efficient sea galley with all appliances and cooking equipment. The starboard hull is dedicated to a spacious private master suite. She has a vast 25'x9' aft deck, covered with an awning, in addition to a covered outside dining area. Her rudders and props are protected above the keel line, and the engines have V-drives allowing complete maintenance accessibility. Extensive storage spaces for diving equipment, personal items, books, charts, galley and other equipment both inside and in deck lockers. Joinery throughout the vessel is of high quality Honduras mahogany and birch with a matte finish.

VESSEL WALK THROUGH

Main deck includes a spacious aft deck including work bench, an outside dining area, a salon with open galley, formal dining areas port and starboard and an entertainment center. The large owner's cabin occupies the entire starboard hull with queen-sized berth forward and book cases mounted on outer hull. Next aft is vanity, and aft is expansive head and stall shower. Below decks on the port side are two guest cabins, with vanity, a shared head and stall shower and book cases mounted on outer hull.

MAIN SALON

Upon entering the yacht from the aft deck, the nearly 27' beam becomes readily apparent. Even with ample walk-around side decks, one feels as if he/she is aboard a much larger yacht. The main cabin has twelve opening windows which provide excellent natural ventilation and nearly 360 degree visibility. Immediately on the left upon entering the salon is the staircase which is the primary access to the pilothouse. Port and starboard forward are two dinettes with plenty of seating. To starboard on entering is a large hanging locker and forward of that an entertainment cabinet housing a 32" Sony TV, 10 cartridge CD unit, DVD player and Sirius receiver. Below is a multi-drawer cabinet holding an easily-accessed selection of tools. DVD player 32" Sony Flat Screen TV Jensen 10-Disc CD unit Sirius radio Bose speakers in aft deck, salon and pilot house

SALON AND GALLEY

Occupying the port side of the salon and just forward of, but open to the galley, is one dining area that seats six. Forward and to starboard is another dining area seating four. The entire salon/ dining/ galley area is surrounded by opening windows which provide unrivaled natural ventilation and light to the area. In addition the area is fully air conditioned. Galley with extensive food and utensil storage space also has a large double bowl sink, top load refrigerator and freezer, three burner propane stove with oven, and a propane gas detection unit. There is also an exhaust fan for ventilation.

MASTER CABIN

Accessed from the salon companionway to starboard, is the master cabin featuring an athwartship queen island berth forward in the hull with overhead opening hatch and dual fans and reading lights. Lockers are located below the berth and forward is a cedar-lined, very large hanging locker.

MASTER HEAD

The master head is en suite aft in the hull. On the inboard side is the vanity. The shower has a hand-held or wall mountable shower fixture, light and exhaust fan. The toilet is an electric deluxe Jabsco.

PORT FORWARD GUEST STATEROOM

From the center companionway just forward of the Galley are steps leading into the port hull. The forward guest cabin has a large cedar-lined hanging locker and below-berth storage. The queen berth is fitted with dual fans and reading lights. There is an opening hatch above the berth.

PORT GUEST HEAD

Amidships in the port hull is a shared head with Lavac toilet, vanity, sink and countertop with single-lever faucet with several storage cabinets above and two cabinets below. The stall shower has a seat, a hand-held or wall mountable Kohler shower fixture, an exhaust fan and overhead light.

PORT AFT STATEROOM

Going aft in the port hull is another guest cabin with a berth inboard, below-berth storage and a hanging locker. The queen berth is fitted with dual fans and reading lights. There is an opening hatch above the berth.

PILOT HOUSE

The pilothouse is accessed by steps leading up from the salon providing entrance to a surprisingly large helm area rivaling that of much larger yachts. Immediately noticeable are the numerous opening windows providing 360 degree visibility and exceptional natural ventilation. The pilothouse is also fully air conditioned.

To starboard is a comfortable large L-shaped seating area. The helm itself is centerline with one helm chair. To port is a large chart table. An aft door leads to the spacious upper aft deck. Extensive storage under instrument panels, seats and port cabinets

ELECTRONICS AND NAVIGATION

Two Garmin 5215 chart plotters ICOM MC 27 VHF Two Horizon depth sounders SEA 235 SSB
Garmin radar HD Cetek autopilot 8 Solar panels

JRC GPS-J-NAV 500 Garmin GPS 182c Horizon wind and speed gauges Battery monitor
Ritchie compass and inclinometer Searchlight

EQUIPMENT

Two Lewmar 3000 windlasses Two ARCO 60 ST winches with aft anchor fairleads Two 110
lbs. Bruce anchors Two additional anchors: 48 lbs. each Two 350 ft. chain/rope rode Two
1,000 lb. davits (one powered)

13' Livingston catamaran tender w/ 25 hp two-stroke Yamaha Yamaha 15 hp four stroke spare
outboard

AFT DECK

The aft deck is a full-beam area for many of the outside activities of the yacht. It is covered with a
loose sun cover for cruising in tropical waters. The catamaran tender is set on aft deck for
offshore passages and is carried behind the aft deck in port and lifted by means of a powered
crane. The forward portion of the covered aft deck consists of a dinette seating six people to
starboard and to port, a U-shaped work area consisting of work bench with storage below, top-
loading refrigerator and freezer, large sink and counter space. Outboard port is a flat space
where a large berth can be made up.

MECHANICAL

Twin Cummins 210 hp diesels with V-drives 7.5 KW Kubota generator 1306 hrs. SMOH
Evolution system drives Fuel polishing system with 160 gal. day tank Two new 180 amp, 24V
alternators 1,000 amp AH Rolls batteries, 24V

4 kW Heart charger/Inverter Three 16,500 BTU air conditioners Village Marine watermaker (20
gph) Fuel burn 3 nm/gal @ 9 knots; 1 nm/gal @ 16 knots; 20 knots max

EXTRAS

Full set of equipment manuals in files onboard Two refrigeration boxes Two freezers Two
propane water heaters Aft deck awning

Gasoline tank, 50 gal. Four propane tanks in locker with drainage Six fire extinguishers Man
overboard pole and light Two life rings (one with recovery line)

Основная информация

Тип судна: Катамаран

Модельный год: 1999

Год постройки: 1999

Страна: United States

Открытая палуба мостика: Да

Размеры

Длина общая: 62' 0" (18.90m)

Ширина: 27' 0" (8.23m)

Макс. осадка: 3' 5" (1.04m)

Скорость, вместимость и масса

Водоизмещение: 40000 Pounds

Вместимость воды: 500 Gallons

Вместимость сточного бака: 500 Gallons Объем топливного бака: 1400 Gallons

Размещение

Всего кают: 3

Корпус и палуба

Материал корпуса: Composite

Информация о двигателе

Двигатели: 2

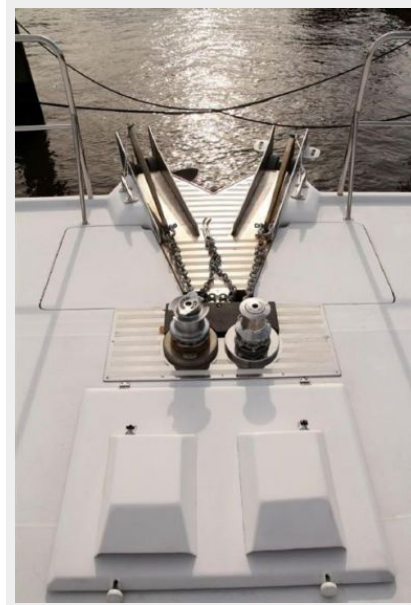
Производитель: Cummins

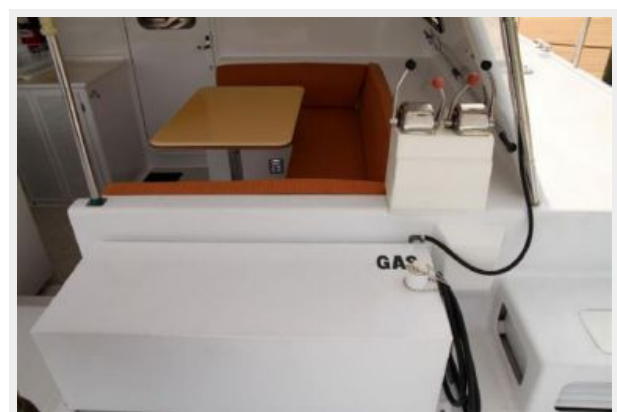
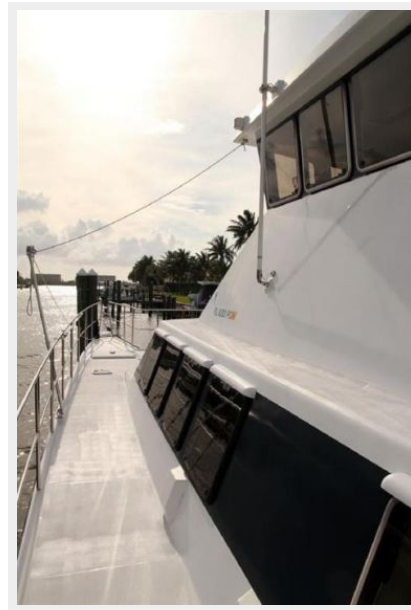
Модель: 6BT 5.9 L

Тип двигателя: Inboard

Тип топлива: Diesel

ФОТОГРАФИИ









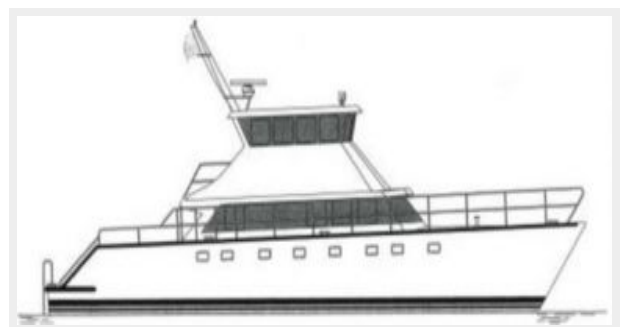
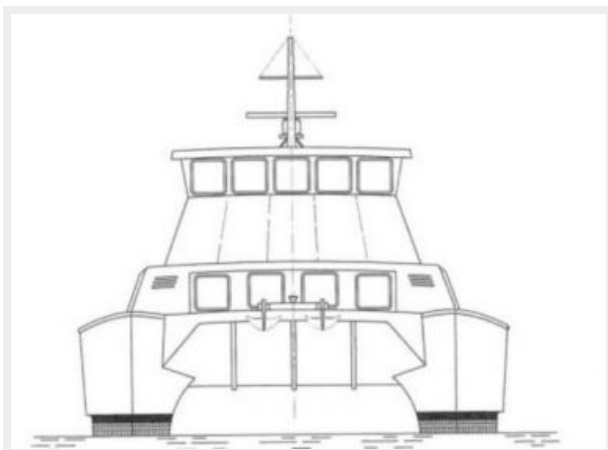


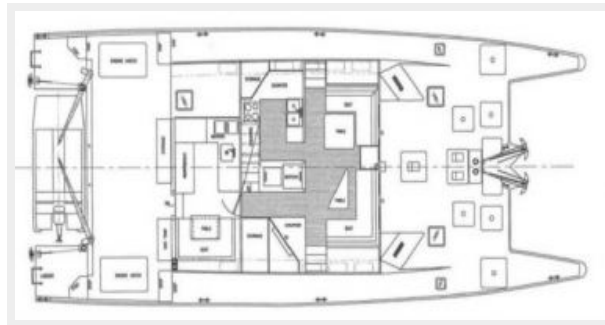
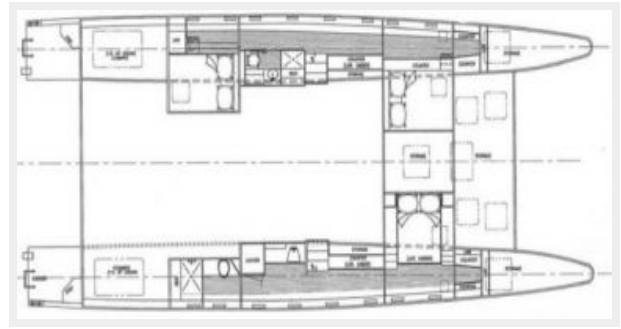
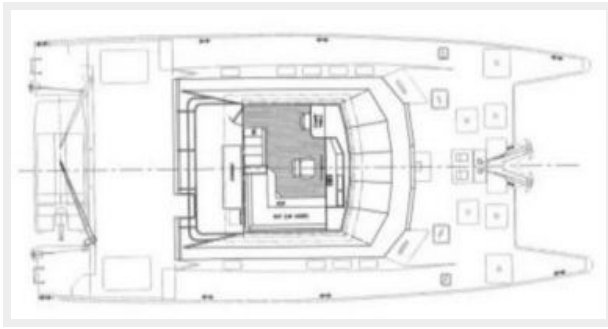












КОНТАКТЫ

Андрей Шестаков (Andrey Shestakov) – ведущий яхтенный брокер отдела продаж яхт и судов компании Shestakov Yacht Sales Inc. Официальный представитель Shestakov Yacht Sales Inc. для русскоговорящих клиентов в центральном офисе компании в Майами/Форт Лодердейл/Флорида/США.

Контактная информация

Email: andrey@shestakovyachtsales.com

Web: shestakovyachtsales.com

Телефоны

Краснодарский край: **+7(918)465-66-44**

США, Майами, Флорида: **+1(954)274-4435**

Время работы

Понедельник – Суббота: **9:00 - 21:00**
EDT

Воскресенье: **Закрито**

Адрес



Harbour Towne Marina, 850 NE 3rd St,
STE 213, Dania, FL 33004