

## ANDITI — SUNSEEKER



**Builder:** SUNSEEKER

**Year Built:** 2005

**Model:** Cruiser

**Price:** PRICE ON APPLICATION

**Location:** United States

**LOA:** 82' 0" (24.99m)

**Beam:** 19' 6" (5.94m)

**Max Draft:** 5' 8" (1.73m)

**Cruise Speed:** 28 Kts. (32 MPH)

**Max Speed:** 33 Kts. (38 MPH)

Our experienced yacht broker, Andrey Shestakov, will help you choose and buy a yacht that best suits your needs **Anditi — SUNSEEKER** from our catalogue. Presently, at Shestakov Yacht Sales Inc., we have a wide variety of yachts available on our sale's list. We also work in close contact with all the big yacht manufacturers from all over the world.

If you would like to buy a yacht **Anditi — SUNSEEKER** or would like help answering any questions concerning purchasing, selling or chartering a yacht, please call **+1(954)274-4435**

---

# TABLE OF CONTENTS

---

TABLE OF CONTENTS	2
SPECIFICATIONS	3
Overview	3
Basic Information	3
Dimensions	3
Speed, Capacities and Weight	3
Accommodations	4
Hull and Deck Information	4
Engine Information	4
DETAILED INFORMATION	5
Recent Upgrades	5
Principal Features	5
Accommodations	6
Galley	7
Cockpit	7
Deck Equipment	7
Helm	8
Engine & Mechanical	8
Construction	9
Exclusions	9
Disclaimer	9
PHOTOS	10
CONTACTS	17
Contact details	17
Telephones	17
Office hours	17
Address	17

---

# SPECIFICATIONS

---

## Overview

---

- One Owner
- Powered with Caterpillar C-30's
- 4 Staterooms each with en suite head/shower plus crew
- New cockpit teak
- 2,000 service hours recently performed
- 2 New chillers
- Hull painted, 2012
- Sleek, race profile, open layout, priced to sell *Not for sale to US residents while in US waters*

## Basic Information

---

**Category:** Cruiser

**Sub Category:** Express

**Model Year:** 2005

**Year Built:** 2005

**Country:** United States

**Vessel Top:** Electronic Sunroof

**Cockpit:** Yes

## Dimensions

---

**LOA:** 82' 0" (24.99m)

**Beam:** 19' 6" (5.94m)

**Max Draft:** 5' 8" (1.73m)

## Speed, Capacities and Weight

---

**Cruise Speed:** 28 Kts. (32 MPH)

**Max Speed:** 33 Kts. (38 MPH)

**Displacement:** 106300 Pounds

**Water Capacity:** 529 Gallons

**Fuel Capacity:** 1559 Gallons

---

## Accommodations

---

**Total Cabins:** 4

**Total Heads:** 4

---

## Hull and Deck Information

---

**Hull Material:** Fiberglass

**Hull Configuration:** Deep Vee

---

## Engine Information

---

**Engines:** 2

**Manufacturer:** Caterpillar

**Model:** C-30

**Engine Type:** Inboard

**Fuel Type:** Diesel

---

# DETAILED INFORMATION

---

## Recent Upgrades

---

- Hull painted 2012
- Caterpillar C-30's recent 2000 hour service
- New Hydraulic bow & stern thruster motors
- New Stereo system
- HD SAT TV throughout
- All communicating w/IPAD technology
- New Electric grill
- 2 x New chillers
- New cockpit teak
- Custom full-size refrigerator in galley

## Principal Features

---

- Garage for optional tender and jet-ski
- Hydraulic swim platform
- Hot & cold swim shower
- Wet bar w/ice maker & refrigerator
- Ceramic BBQ grill in cockpit
- Autopilot
- Power steering
- Electronic speed log, depth sounder and VHF radio
- TRim tabs
- Hydraulic bow & stern thrusters (30 hp)
- Flatscreen TV in all cabins except crew
- Surround sound system for salon & master
- Ceramic cooktop, microwave oven, refrigerator and freezer
- Hot & cold water system
- Automatic fire extinguishing system for engine room
- Automatic bilge pumps
- Slow speed generators w/silent exhaust
- AC shore power/battery charger
- A/C in all cabins
- Remote control spotlight
- Electric winch with foredeck & console control
- Toilet system w/holding tank
- Teak cockpit, swim platform, steps and side decks
- Opening hardtop roof
- Crew quarters

---

## Accommodations

---

### Master Stateroom-Aft

- Queen berth w/storage below
- Love seat
- Vanity w/low back chair
- Night stands w/drawers
- Walk-in closet
- 50" Samsung Plasma TV
- Bose Lifestyle stereo surround system
- A/C
- 24v Overhead halogen lighting
- 3 x Large vertical portholes, center window is opening w/screen
- En Suite head w/stall shower

### VIP-Forward

- Double berth w/storage below and drawer at base end
- Hanging locker
- Opening portholes w/screens
- Overhead opening hatch w/screen
- Shelved cabinet
- Sony plasma flat screen TV
- Bose surround sound system
- En Suite head w/stall shower

### Starboard Guest Cabin

- 2 x Single berths w/storage below
- Nightstand w/drawer
- Hanging locker w/full length mirror
- Sharp Aquos TV
- CD w/2 speakers
- A/C
- En Suite head w/shower

### Port Guest Cabin

- Over-under single berths
- Night stand w/drawer
- Hanging locker w/full length mirror
- Flat screen TV
- CD w/2 speakers
- Opening porhohle w/screen
- En Suite head w/shower

---

## Crew Cabin

- 2 x Separate single berths
- Private head

---

## Galley

- 4-Burner ceramic cooktop w/overhead exhaust fan
- Sharp Carousel microwave oven
- Whirlpool side-by-side refrigerator/freezer w/ice & water through door
- Dishwasher
- Cupboard & drawer storage
- Sharp TV
- Sony stereo receiver
- Hand-held fire extinguisher
- Opening porthole w/screen
- A/C
- VHF 2nd station handset
- CD/radio w/2 speakers
- Crew mess w/stools
- Watertight access door to engine room

---

## Cockpit

- Upholstered stern seat and sun pad
- Upholstered seating around cockpit table
- Lockers beneath seating
- Table w/folding leaf
- Wet bar w/icemaker, cool box and hot and cold water
- Ceramic griddle
- Teak cockpit sole
- Remote keypad for CD/radio
- 4 x Marine speakers connected to CD/radio
- 2 x Stern capstan winches and fairleads
- Engine room access hatch
- Sliding cockpit doors to salon
- Fire extinguisher

---

## Deck Equipment

- Curved safety glass windscreen w/wipers and washers
- SS bow roller w/anchor stop

- SS bow plate
- 40kg Anchor w/70m of 10mm galvanized chain
- Electric winch and capstan w/foredeck and cockpit controls (24v)
- 2 x Stern electric capstan winches
- Chain locker and fender storage
- Fender tie bar under anchor locker lid
- Teak side decks
- Sun pad
- Deck wash outlets fwd and aft

---

## Helm

---

- Electric helm seat
- Co-pilot seat
- Chart area
- Console w/burr type walnut fascia
- Power steering
- Single lever engine controls
- RL 80C Furuno radar/chart plotter w/GPS (2 x displays)
- Simrad AP25 autopilot
- Side Power bow & stern thruster
- Dual CAT engine displays
- Full analog engine instrumentation
- Depth & speed displays
- Rudder angle indicator
- Fresh water & fuel gauges
- VHF radio (dual station)
- Trim tab controls
- Compass
- Door to side deck
- Stairway to lower deck

---

## Engine & Mechanical

---

- Twin CAT C-30's
- 2 x 20kW Kohler generators
- Separate fuel filters w/water alarms
- Automatic FM200 fire extinguisher w/engine, generator and fan shutdown
- Automatic bilge & flood pump
- Manual bilge pump
- 2 x Exhaust fans
- 24v Hydraulic pump for trim tabs, gangway and garage door
- Hydraulic power steering from engine driven pump



- Fuel shut-off valves operable from inside & outside of engine room

## Construction

---

- Hand laid GRP
- Gel coat including stripes
- Vinylester skin coat w/powder bound mat
- Stitched multi-axial reinforced single skin bottom
- Balsa cored hull topsides
- PVC foam cored deck and super structure
- Hull stiffened with longitudinal stringers supported by transverse bulkheads and floors

## Exclusions

---

Owner's personal belongings.

## Disclaimer

---

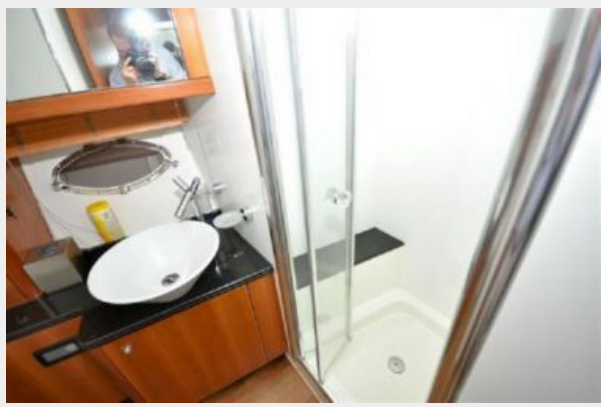
The Company offers the details of this vessel or yacht in good faith but cannot guarantee or warrant the accuracy of this information nor warrant the condition of the vessel. A buyer should instruct his representatives, agents, or his surveyors, to investigate such details as the buyer desires validated. This vessel or yacht is offered subject to prior sale, price change, or withdrawal without notice.

# PHOTOS

















# CONTACTS

---

Andrey Shestakov, leading yacht broker of the sales department of Shestakov Yacht Sales Inc. Shestakov Yacht Sales Inc., the official representative of the Miami/Fort Lauderdale FL headquarters.

## Contact details

---

Email: [andrey@shestakovyachtsales.com](mailto:andrey@shestakovyachtsales.com)

Web: [shestakovyachtsales.com/en/](http://shestakovyachtsales.com/en/)

## Telephones

---

USA: +1(954)274-4435

## Office hours

---

Monday – Saturday: **9:00 - 21:00** EDT

Sunday: **closed**

## Address

---



Harbour Towne Marina, 850 NE 3rd St,  
STE 213, Dania, FL 33004