

ODYSSEA — VIKING SPORT CRUISERS



Builder: VIKING SPORT CRUISERS

Year Built: 2002

Model: Motor Yacht

Price: PRICE ON APPLICATION

Location: United States

LOA: 45' 0" (13.72m)

Beam: 14' 3" (4.34m)

Max Draft: 3' 7" (1.09m)

Our experienced yacht broker, Andrey Shestakov, will help you choose and buy a yacht that best suits your needs **Odyssea — VIKING SPORT CRUISERS** from our catalogue. Presently, at Shestakov Yacht Sales Inc., we have a wide variety of yachts available on our sale's list. We also work in close contact with all the big yacht manufacturers from all over the world.

If you would like to buy a yacht **Odyssea — VIKING SPORT CRUISERS** or would like help answering any questions concerning purchasing, selling or chartering a yacht, please call **+1(954)274-4435**

TABLE OF CONTENTS

TABLE OF CONTENTS	2
SPECIFICATIONS	6
Overview	6
Basic Information	6
Dimensions	6
Speed, Capacities and Weight	6
Accommodations	6
Hull and Deck Information	7
Engine Information	7
DETAILED INFORMATION	8
Accommodations	8
Salon/Lower Helm	8
Galley	8
Master Stateroom/Head	9
Guest Stateroom/Head	9
Electronics	9
Electrical and Mechanical	10
Flybridge	10
Deck/Exterior/Aft Deck	10
Exclusions	11
Exclusions	11
Disclaimer	11
PHOTOS	12
Salon Entry	12
Salon Seating	12
Port Salon Loveseat	12
Salon	12
Salon TV	12

Salon Refrigerator	12
Main Distribution Panel	13
Salon Stereo	13
Galley Refrigerator	13
Galley	13
Galley Storage	14
Lower Galley Storage	14
Lower Galley Cabinet	14
Galley Floor Storage	14
Master Stateroom	14
Master Stateroom TV	14
Master Stateroom Stereo	15
Master Stateroom Upper Storage	15
Master Stateroom Locker	15
Master Stateroom Storage	15
Master Head	16
Master Head	16
Master Head	16
Master Head Storage	16
Guest Stateroom Storage	17
Guest Stateroom	17
Guest Head	17
Guest Shower	17
Washer and Dryer Combo	18
Guest Storage	18
Lower Helm	18
Lower Helm	18
Lower Helm	18
Electronics	18

Electronics	19
Electronics	19
SAT TV and Radar	19
Engine Room Access	19
Engine Room	19
Port Engine	19
Starboard Engine	20
Volvo Engine	20
Lazarette	20
Cable Master	20
Spare Shaft Seals	20
Last Service Date	20
Molded Steps to Bridge	21
Safety Door to Bridge	21
Bridge Helm	21
Bridge Helm	21
Bridge Helm Cover	21
Bridge Electronics	21
Bridge Cooker	22
Bridge Enclosure	22
Bridge Enclosure	22
Bridge Enclosure	22
Bridge Seating	22
Bridge Seating	22
Cockpit	23
Cockpit Line Storage	23
Cockpit Emergency Pump	23
Cockpit Seating	23
Bow - Windlass	23

New Teak Decking	23
Spare Prop Storage	24
Profile	24
CONTACTS	25
Contact details	25
Telephones	25
Office hours	25
Address	25

SPECIFICATIONS

Overview

With two staterooms and two heads this 45' Viking Sport Cruiser has it all! Upper and Lower Helm Stations, Large Aft Deck and Swimplatform Area and spacious Flybridge with ALL the amenities and electronics, are included with a great Salon area. The classic cherry wood and up-scale decor package make this yacht SPECIAL and ELEGANT. You simply cannot find a 45' Viking Sport Cruiser that has been better equipped. This is the one you have been awaiting!

Basic Information

Category: Motor Yacht

Sub Category: Flybridge

Model Year: 2002

Year Built: 2002

Country: United States

Fly Bridge: Yes

Dimensions

LOA: 45' 0" (13.72m)

Beam: 14' 3" (4.34m)

Max Draft: 3' 7" (1.09m)

Speed, Capacities and Weight

Displacement: 28000 Pounds

Water Capacity: 150 Gallons

Holding Tank: 30 Gallons

Fuel Capacity: 380 Gallons

Accommodations

Total Cabins: 2

Total Heads: 2

Hull and Deck Information

Hull Material: Fiberglass

Engine Information

Engines: 2

Manufacturer: Volvo

Model: TAMD74P

Engine Type: Inboard

Fuel Type: Diesel

DETAILED INFORMATION

Accommodations

Two staterooms sleep four, with 2 heads.

Salon/Lower Helm

Lower Helm Area: (2) Helm Chairs, Raised Captain's Helm Chair, Full Instrumentation, Hydraulic Steering, Volvo Electronic Controls, Trim Tab Controls, Windlass Controls, Remote Spotlight Controls, Opening Side Windows, (See Electronics List), Windshield Defogger, and Windshield Wipers w/Washers.

- Three Section S/S Sliding Door to Aft Deck Area
- U-Shaped Sofa w/Dinette Table (Cherry) to Starboard
- Optional Classic Cherry High-Gloss Wood Finish
- Custom Luxury Decor Package
- Upgraded Dark Blue Carpeting (Tone on Tone)
- Central Vacuum System
- Clock & Barometer
- Loveseat (2-Seater) to Port
- Privacy Curtain
- JVC Color TV in Cabinet w/JVC VCR (20" TV)
- JVC Stereo/CD
- Additional Refrigerator in Aft Salon Area to Port
- Companionway: Central Vacuum
- Companionway: Washer/Dryer in Port Cabinet

Galley

- Avonite Counter Tops
- Electric Stove Top (3 Burner)
- Sharp Carousel Microwave
- Refrigerator/Freezer
- Trash Compartment w/Removable Basket
- Stainless Steel Sink
- (2) 110V Receptacles
- Abundant Storage
- Storage Locker in Galley Sole
- Teak & Holly Sole

Master Stateroom/Head

En Suite Head: Stall Shower and Seat, A/C, Exhaust Fan, Vacuflush Head, Opening Porthole w/Screen, Teak & Holly Sole, Extra Towel Bar and Ample Storage.

- Large Double Bed w/Drawers below
- TV/VCR Combo (9" Built-In)
- Overhead & Reading Lights
- AM/FM Stereo/CD
- Opening Portholes w/Screens (Stainless Steel)
- Deck Hatch w/Screen & Shade
- Reading Lights
- Two Large Hanging Lockers
- Upper Storage - Port & Starboard
- Overhead Hatch Opening
- Privacy Door
- High Gloss Cherrywood

Guest Stateroom/Head

Head w/Doors to Stateroom & Companionway: Teak & Holly Sole, A/C, Exhaust Fan, Vacuflush Head, Opening Porthole w/Screen, Ample Storage and Extra Towel Bar.

- Privacy Door
- (2) Single Berths
- Hanging & Storage Lockers
- Opening Portholes w/Screens (Stainless Steel)
- Reading Lights
- Standing Headroom for Dressing

Electronics

- ICOM VHF Radio w/Command Mic (Lower)
- ICOM VHF Radio (Upper)
- 12V Receptacle (Upper)
- Raytheon/Depth & Speed Indicator (Upper & Lower)
- SIMRAD Autopilot (Upper & Lower Controls)
- Remote Spotlight (Upper & Lower Controls)
- Electronics are Interfaced
- Furuno 1943 Radar/6KW Power (Displays Upper & Lower)
- Furuno Color Chartplotter w/GPS (Displays Upper & Lower)
- LPS Lightning Strike Devise

- Furuno Digital Heading Sensor
- SAT TV: KVH Trackvision w/KVH-RCA DRD505 Receiver

Electrical and Mechanical

- 9KW Onan Generator in Sound Shield (Lazarette) with 1,555 Hours
- 50 Amp/240V Dockside Service w/Glendinning Cablemaster
- Bonding System
- Charles Smart Boost Isolation Transformer
- Cruise-Air Air Conditioning (40,000 BTU)
- Battery Charger (40 Amp)
- Dripless Shaft Log w/Crossover Lubrication System and Spare Seals
- Fire Protection System
- 4-Blade Props
- Water Tank Gauge
- Deep “V” Hull w/Molded Spray Rails
- Oil Changing System

Flybridge

- U-Shaped Settee w/Table
- Insulated Drink Box
- Custom Bimini Top w/4-Sided Enclosure & U-Zippers
- Fiberglass Door over Integrated Steps to Cockpit
- Full Flybridge Storage Cover
- (2) Raised Helm Seats
- Stereo Speakers
- Full Instrumentation
- Hydraulic Steering
- Trim Tab Controls
- Rudder Angle Indicator
- Bow Thruster Control
- Remote Spotlight Control
- Windlass Control
- Volvo Electronic Controls

Deck/Exterior/Aft Deck

- L-Shaped Cockpit Seating
- Full Window Covers (2 Sets)
- Windlass w/Upper & Lower Controls

- Anchor & Anchor Chain
- 316 Stainless Steel Cleats, Chocks & Railings
- Fenders & Lines
- Aft Deck Cover
- Spacious Swim Platform with new Teak decking - February 2015
- Swimpladder (Integrated)
- Telephone/Cable TV Connections (Aft)
- Hot/Cold Shower (Aft)
- Recessed Storage (Swim Platform Area)
- Spare Prop (In Aft Storage Area)
- Glendinning Cable Master
- Ice Maker (Aft Deck Area)
- Integrated Flybridge Stairs
- Storage Lockers (Aft)
- Engine Room & Lazarette Access
- Fresh Water Wash Down (Foredeck)
- Transom Door
- Teak Decks
- Side Boarding Ladder
- (2) Rod Holders in Gunnel
- (2) Overhead Fishing Rod Storage Brackets

Exclusions

Personal Items - List will be Provided.

Exclusions

Owner's personal belongings.

Disclaimer

The Company offers the details of this vessel or yacht in good faith but cannot guarantee or warrant the accuracy of this information nor warrant the condition of the vessel. A buyer should instruct his representatives, agents, or his surveyors, to investigate such details as the buyer desires validated. This vessel or yacht is offered subject to prior sale, price change, or withdrawal without notice.

PHOTOS

Salon Entry



Salon Seating



Port Salon Loveseat



Salon



Salon TV



Salon Refrigerator



Salon Stereo



Main Distribution Panel



Galley



Galley Refrigerator



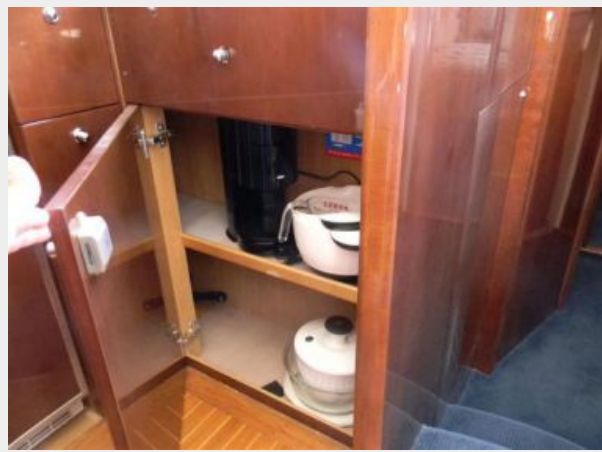
Galley Storage



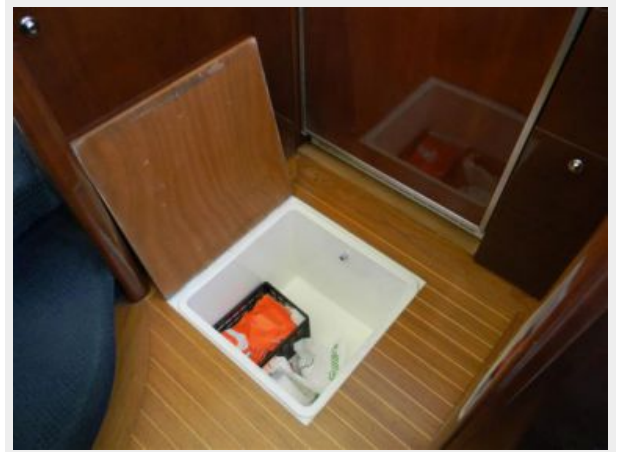
Lower Galley Storage



Lower Galley Cabinet



Galley Floor Storage



Master Stateroom



Master Stateroom TV



Master Stateroom Stereo



Master Stateroom Upper Storage



Master Stateroom Locker



Master Stateroom Storage



Master Head



Master Head



Master Head



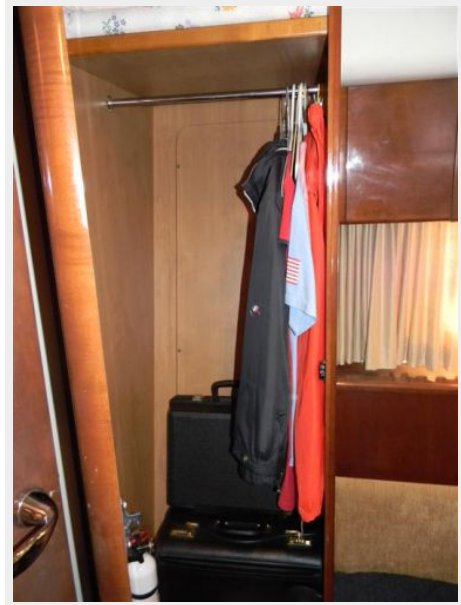
Master Head Storage



Guest Stateroom



Guest Stateroom Storage



Guest Head



Guest Shower



Guest Storage



Washer and Dryer Combo



Lower Helm



Lower Helm



Lower Helm



Electronics



Electronics



Electronics



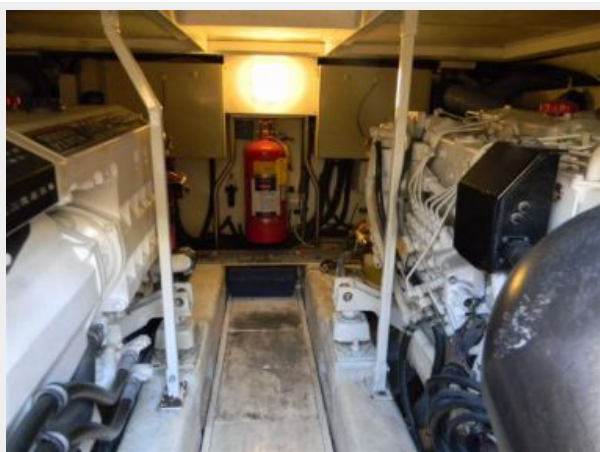
SAT TV and Radar



Engine Room Access



Engine Room



Port Engine



Starboard Engine



Volvo Engine



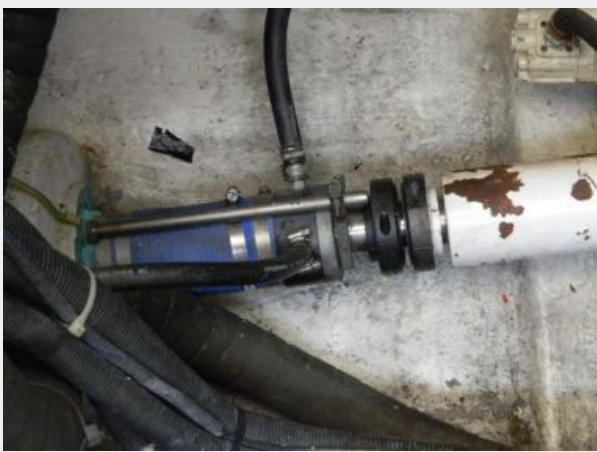
Lazarette



Cable Master



Spare Shaft Seals



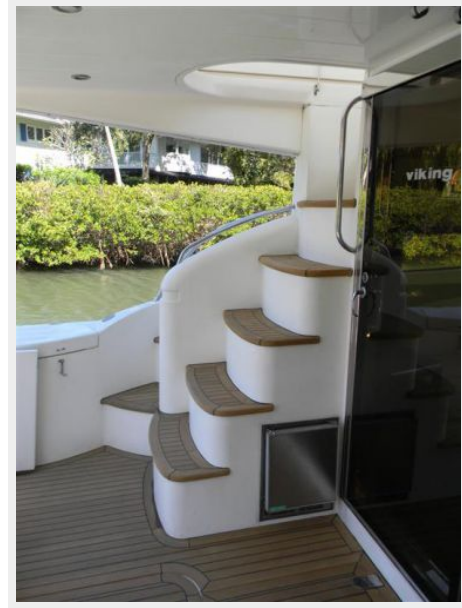
Last Service Date



Safety Door to Bridge



Molded Steps to Bridge



Bridge Helm



Bridge Helm



Bridge Helm Cover



Bridge Electronics



Bridge Cooker



Bridge Enclosure



Bridge Enclosure



Bridge Enclosure



Bridge Seating



Bridge Seating



Cockpit



Cockpit Line Storage



Cockpit Emergency Pump



Cockpit Seating



Bow - Windlass



New Teak Decking



Spare Prop Storage



Profile



CONTACTS

Andrey Shestakov, leading yacht broker of the sales department of Shestakov Yacht Sales Inc. Shestakov Yacht Sales Inc., the official representative of the Miami/Fort Lauderdale FL headquarters.

Contact details

Email: andrey@shestakovyachtsales.com

Web: shestakovyachtsales.com/en/

Telephones

USA: +1(954)274-4435

Office hours

Monday – Saturday: **9:00 - 21:00** EDT

Sunday: **closed**

Address



Harbour Towne Marina, 850 NE 3rd St,
STE 213, Dania, FL 33004