

## PERFECT LADY — HATTERAS



**Builder:** HATTERAS

**Year Built:** 1998

**Model:** Motor Yacht

**Price:** PRICE ON APPLICATION

**Location:** United States

**LOA:** 84' 0" (25.60m)

**Beam:** 23' 0" (7.01m)

**Max Draft:** 7' 0" (2.13m)

**Cruise Speed:** 15 Kts. (17 MPH)

**Max Speed:** 21 Kts. (24 MPH)

Our experienced yacht broker, Andrey Shestakov, will help you choose and buy a yacht that best suits your needs **PERFECT LADY — HATTERAS** from our catalogue. Presently, at Shestakov Yacht Sales Inc., we have a wide variety of yachts available on our sale's list. We also work in close contact with all the big yacht manufacturers from all over the world.

If you would like to buy a yacht **PERFECT LADY — HATTERAS** or would like help answering any questions concerning purchasing, selling or chartering a yacht, please call **+1(954)274-4435**

# TABLE OF CONTENTS

TABLE OF CONTENTS	2
SPECIFICATIONS	3
Overview	3
Basic Information	3
Dimensions	3
Speed, Capacities and Weight	3
Accommodations	4
Hull and Deck Information	4
Engine Information	4
DETAILED INFORMATION	5
Dimensions	5
Mechanical	5
Audio & Visual Equipment	6
Galley	6
Laundry Room	7
Deck Equipment	7
Safety & Fire Protection	7
Accommodations	8
Exclusions	8
Disclaimer	8
PHOTOS	9
CONTACTS	13
Contact details	13
Telephones	13
Office hours	13
Address	13

---

# SPECIFICATIONS

---

## Overview

---

The PERFECT LADY represents the very best value in the marketplace in her size range. Her soft, yet crisp décor complements her relatively large beam giving guests a feeling of being aboard a much larger yacht. In actuality, Hatteras converted this 84' hull into the popular 105' series utilizing the same mold.

In 2012, the owners put a substantial efforts upgrading her décor, entertainment system, and amenities. A major improvement was the removal of the flybridge davit and the addition of transom TNT swim platform to carry the tender. This decision also opened up the aft section of the flybridge to the built in Jacuzzi tub with fixed granite bar turning the entire flybridge into a tropical playground. With her original, low time CAT 3412-1350 propulsion, expansive guest spaces, and large crew area the PERFECT LADY is the very best opportunity for you to achieve your yachting dreams.

## Basic Information

---

**Category:** Motor Yacht

**Model Year:** 1998

**Year Built:** 1998

**Refit Year:** 2012

**Country:** United States

## Dimensions

---

**LOA:** 84' 0" (25.60m)

**Beam:** 23' 0" (7.01m)

**Max Draft:** 7' 0" (2.13m)

## Speed, Capacities and Weight

---

**Cruise Speed:** 15 Kts. (17 MPH)

**Max Speed:** 21 Kts. (24 MPH)

**Gross Tonnage:** 89 Pounds

**Water Capacity:** 800 Gallons

**Fuel Capacity:** 3515 Gallons

---

## Accommodations

---

**Total Cabins:** 3

**Sleeps:** 6

**Crew Cabin:** 3

**Crew Sleeps:** 5

---

## Hull and Deck Information

---

**Hull Material:** Fiberglass

---

## Engine Information

---

**Engines:** 2

**Manufacturer:** Caterpillar

**Model:** 3412 TA

# DETAILED INFORMATION

## Dimensions

General Length Overall (L.O.A.): 84.00 feet (25.60 meters) Beam  
 (molded): 23.00 feet ( 7.01 meters) Draft (loaded):  
 7.00 feet ( 2.02 meters) Tonnage: 89 gross tons

### Capacities

Fuel Capacity: 3,515 US Gallons (13,321 liters) Water Capacity:  
 800 US Gallons ( 3,032 liters) Lube Oil: 100 US  
 Gallons ( 379 liters) Waste Oil: 100 US Gallons ( 379 liters)

Speed	Consumption per hours	RPM
Maximum:	21.0 kts	140 US Gallons p/hr
	15.0 kts	85 US Gallons p/hr
Economical:	12.0 kts	40 US Gallons p/hr

2300 Cruising:  
1900  
1400

## Mechanical

### Main Engines

Engine Type: (2) CAT 3412 TA @1,350 Hp each Gearboxes for Main Engines: ZF  
 3W256P; 5.90: 1 Ratio Drive: Propeller

### Generators & Electricity

Output: 240/120 Volts, Phase 1, 60 Hz Generators:  
 (2) Onan 35 Kw generators, @ 1,800 rpm Shore Power: 240/120  
 Volts, Phase 1, 60 Hz

Air Conditioning: Type: CruiseAir 180,000 BTU; 13 air handling  
 units

### Other Machinery

Watermakers: SeaRecovery SRC 3000 Trim Tabs/Stabilizers:  
 NIAD Marine 254/302 Bow Thruster: American Bow  
 Thruster Steering System: Hynautics Fuel Separator & Filtration:  
 Racor 2020 PM Sewage System: Microphor Helm/Control Stations:  
 (4) Bridge & Flybridge Miscellaneous: (2) Wing Stations:  
 portside and starboard side

## Audio & Visual Equipment

---

### Communication Systems

SSB: Seahail 322 VHF: (2)  
Uniden UM 525 Standard Horizon HX400

### Navigation Systems

Radar: Furuno FR-7111- 72 nautical miles range Furuno 19452-  
64 nautical miles range Magnetic Compass: Azimuth 1000 Auto  
Pilot: Robertson AP300X Depth Sounder:  
Furuno RD-30 GPS: Garmin 5212 Northstar 952X Ships  
Computer: Dell Inspiration 1500 Printer: Canon MP 470  
Sonar: Garmin Wind/Speed Log: Data  
Marine/Garmin

### Entertainment System:

Video Equipment TV's: (7) Samsung (Aft Deck, Salon, Master Suite,  
Crew, Guest, Galley) VCR's: (2) Samsung (Master Suite & Salon)  
DVD's: (2) Samsung (Master Suite & Salon)

Audio Equipment Stereo's: (5) Samsung (Guest Cabins, Bridge, & Foredeck)  
I-Pod Stations: (3) BL-Fusion (Bridge & Guest Cabins)

Other Directv in all cabins Denon 4 zone receiver

## Galley

---

### Main Galley Equipment

Cooking Equipment: Range: Kitchen Aid Oven: Kitchen Aid KEB89107 Microwave:  
Kitchen Aid KHMC1157 Refrigeration/Freezer: Refrigeration: Subzero 690IF  
Other: Icemakers: U-Line/Scottman Wine Cooler: Kitchen Aid  
KUW5246 Dishwasher: Kitchen Aid KUD530

## Laundry Room

---

### Laundry Equipment:

Main Laundry Equipment: Washer: Whirlpool LTE623DQO Dryer: Whirlpool  
LTE623DQO Pressing Equipment: Iron & Board

## Deck Equipment

---

Anchor Windlass System: Maxwell VWC 450 Anchor  
Chain: 5/8 short line, 5/8 rope Accommodation Ladders:  
Marquip Gangway manual Spotlights: ACR RCL100 Other: Jacuzzi  
on Flybridge for 6

## Safety & Fire Protection

---

### Fire Fighting Equipment:

Fire/Heat/Smoke Detectors: (11) Throughout Fixed CO2 Fire System:  
Halon 1301 Fire Extinguishers: (11) Throughout Portable  
CO2: (4) Aft Deck, Bridge, Engine Room, Lazarette

### Safety Equipment

Life Rafts: 8 man SWITLIK- Foredeck Life  
Rings: (2) Flybridge & Lazarette  
EPIRBs: ACR RLB-35 Cati Flares:  
Orion hand held (4-4-2) Medical Equipment: West Marine 5.0

---

## Accommodations

---

### OWNER

The Master Suite has a king sized bed with a new Latax foam mattress. His/Her heads with walkthrough showers. It comes equipped with a TV, stereo, I-POD Speakers, and a DVD/CD player.

### GUESTS

The Portside State room has two twin size beds with Latex foam mattresses. Head with walkin shower and comes equipped with a TV and stereo. The Starboard Side Stateroom has a double bed, head with Jacuzzi bath tub, and comes equipped with a TV and stereo.

### CREW

Forward Crew Cabin: Captain's cabin and two bunk crew cabin, crew mess, and head with shower  
Aft Crew Cabin: Two bunks and head with shower.

---

## Exclusions

---

Owner's personal belongings.

---

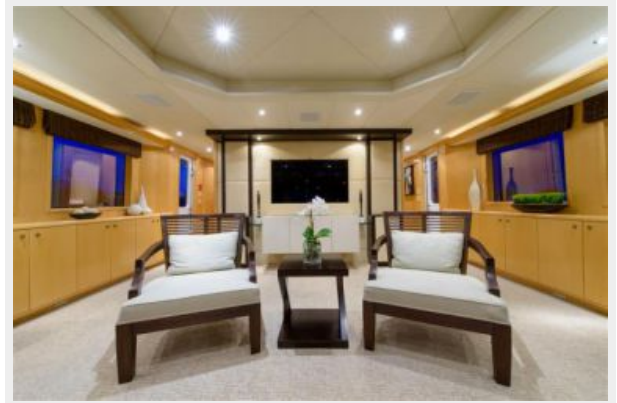
## Disclaimer

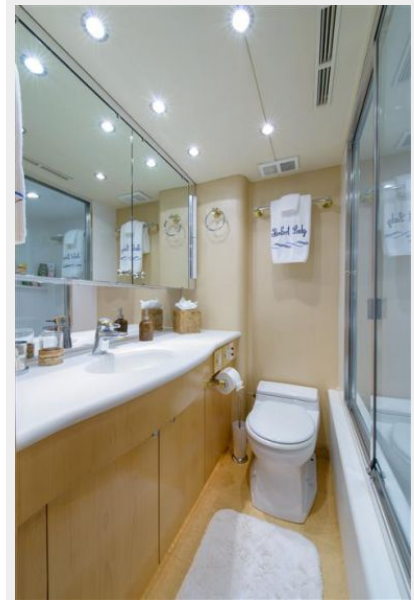
---

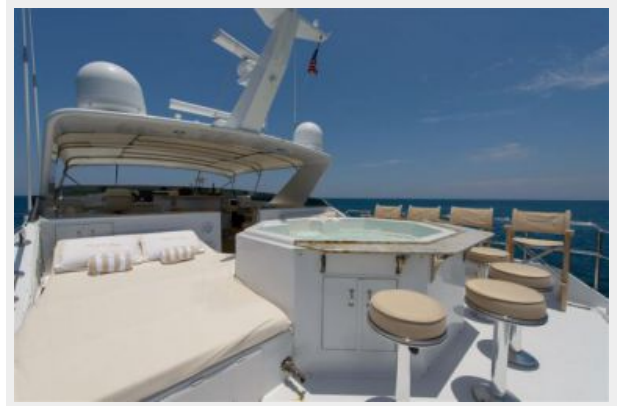
The Company offers the details of this vessel or yacht in good faith but cannot guarantee or warrant the accuracy of this information nor warrant the condition of the vessel. A buyer should instruct his representatives, agents, or his surveyors, to investigate such details as the buyer desires validated. This vessel or yacht is offered subject to prior sale, price change, or withdrawal without notice.



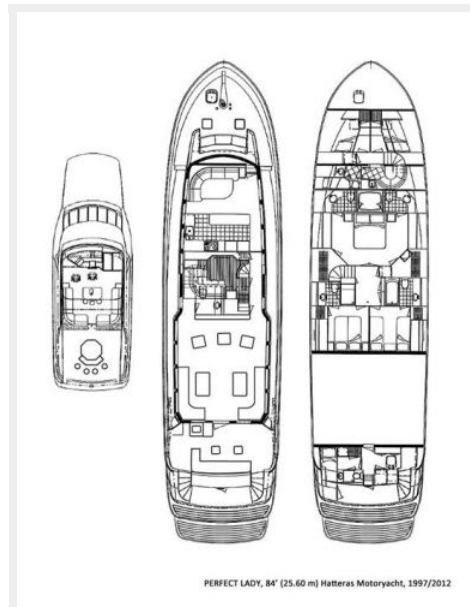
# PHOTOS











# CONTACTS

---

Andrey Shestakov, leading yacht broker of the sales department of Shestakov Yacht Sales Inc. Shestakov Yacht Sales Inc., the official representative of the Miami/Fort Lauderdale FL headquarters.

## Contact details

---

Email: [andrey@shestakovyachtsales.com](mailto:andrey@shestakovyachtsales.com)

Web: [shestakovyachtsales.com/en/](http://shestakovyachtsales.com/en/)

## Telephones

---

USA: +1(954)274-4435

## Office hours

---

Monday – Saturday: **9:00 - 21:00** EDT

Sunday: **closed**

## Address

---



Harbour Towne Marina, 850 NE 3rd St,  
STE 213, Dania, FL 33004