

## KATHERINE E — HATTERAS



**Builder:** HATTERAS

**Year Built:** 2005

**Model:** Motor Yacht

**Price:** PRICE ON APPLICATION

**Location:** United States

**LOA:** 80' 0" (24.38m)

**Beam:** 21' 3" (6.48m)

**Max Draft:** 5' 3" (1.60m)

Our experienced yacht broker, Andrey Shestakov, will help you choose and buy a yacht that best suits your needs **Katherine E — HATTERAS** from our catalogue. Presently, at **Shestakov Yacht Sales Inc.**, we have a wide variety of yachts available on our sale's list. We also work in close contact with all the big yacht manufacturers from all over the world.

If you would like to buy a yacht **Katherine E — HATTERAS** or would like help answering any questions concerning purchasing, selling or chartering a yacht, please call **+1(954)274-4435**

# TABLE OF CONTENTS

TABLE OF CONTENTS	2
SPECIFICATIONS	4
Overview	4
Basic Information	4
Dimensions	4
Speed, Capacities and Weight	4
Accommodations	5
Hull and Deck Information	5
Engine Information	5
DETAILED INFORMATION	6
Overview	6
Salon	6
Country Galley	7
Aft Deck/Sport Deck	8
Day Head	9
Lower Forward Companionway	9
Master Stateroom	10
Master His and Her Head	10
Bow Guest Stateroom	11
Port VIP Stateroom	12
Starboard Stateroom	13
Guest HeadS, Bow, Port and Starboard	13
Crew Quarters	14
Enclosed Fly Bridge	14
Electronics	15
Exterior Finish/Construction	16
Hardware & Miscellaneous	16
Engine Compartment & Bilge	17

---

Electrical	18
Exclusions	19
Disclaimer	19
PHOTOS	21
CONTACTS	33
Contact details	33
Telephones	33
Office hours	33
Address	33

---

# SPECIFICATIONS

---

## Overview

---

### Preliminary Listing

"Kathrine E" is an Enclosed Bridge 2005 model 80 Hatteras with African Mahogany interior and four staterooms forward and two crew. Her 21'3" beam and a 5'3" draft provides the size of most 100' competitors. The vessel is powered by twin Caterpillar C-32 @ 1650 BHP. The interior is custom designed and features an African Mahogany interior with curved glass salon doors, framed in polished stainless steel, giving way to an open salon. Just inside the salon door, you will find twin leather sofas sitting opposite of each other with custom built coffee tables. Center of the salon, is a pop up 50" flat screen TV that is positioned on centerline for ease of viewing. Just forward of the entertainment center, is a formal dining table with six chairs as well as customized china storage both port and starboard and forward a curio cabinet with an ice maker and wet bar. Walking forward you'll find a fully equipped country galley with a separate dining area. To port and starboard, panagraph doors lead to the side decks. Below decks the full beam master stateroom provides exterior light from six port lights and a master his and her head with stone shower and frameless doors. Guest accommodations include three walk around queen berth arrangements with each with their own private head. Aft you'll find two staterooms, and head for the crew with access directly from the aft deck or the transom.

## Basic Information

---

**Category:** Motor Yacht

**Model Year:** 2005

**Year Built:** 2005

**Country:** United States

## Dimensions

---

**LOA:** 80' 0" (24.38m)

**Beam:** 21' 3" (6.48m)

**Max Draft:** 5' 3" (1.60m)

## Speed, Capacities and Weight

---

**Displacement:** 190000 Pounds

**Water Capacity:** 326 Gallons

**Holding Tank:** 388 Gallons

**Fuel Capacity:** 2858 Gallons

---

## Accommodations

---

**Total Cabins:** 4

---

## Hull and Deck Information

---

**Hull Material:** Fiberglass

---

## Engine Information

---

**Manufacturer:** Caterpillar

**Model:** C-32

**Engine Type:** Inboard

**Fuel Type:** Diesel

---

# DETAILED INFORMATION

---

## Overview

---

"Katherine E" is a 2005 model 80' Hatteras Motor Yacht with a 21'3" beam and is powered by twin Caterpillar C32 @ 1650 BHP. The vessel is in pristine condition and a must see. The interior cabinetry is high gloss African mahogany with curved interior sketch face interior passage doors throughout. Just inside the salon, twin leather sofas sit on either side of a centerline pop up TV which separates the salon from the formal dining area. "Katherine E" has an on deck head for easy access and a country galley with additional dining. Just off the galley, port and starboard entry doors provide easy access for line handling.

A singular stairwell provides access to below decks. Aft, a well-lighted, full beam master stateroom showcases a his and her head. Forward the bow stateroom features a queen walk around berth with an ensuite head. The port stateroom features a third queen walk around berth with an ensuite head. And unique to many 80's "Katherine E" features a fourth stateroom with double berth to the hull side with an ensuite head. Aft, the crew quarters provides a VIP stateroom, accommodating a queen walk around berth, as well as a second stateroom with over/unders with a single head.

## Salon

---

Curved sliding doors, framed in polished stainless steel, give way to a vast salon that benefits from a 21'3" beam. Positioned just inside the salon door are matching leather sofas with twin custom built "AJ Original" custom coffee tables which sit on either side of a center line pop up 50" TV and 2 club chairs. Forward a custom "AJ Original" dining table with six chairs along with buffets on either side built with china storage and on the forward bulkhead is a china cabinet which houses a sink, wine chiller and additional china storage.

- Lighted China Cabinet, forward bulkhead with wine chiller, sink and storage, Old Gold Granite Tops surrounding sink
- Custom decorative headliner treatment in salon
- Finished wood bulkheads with high-gloss polyester finish in african mahogany
- Carpeting
- Carpet Runners (UPGRADE)
- Whisperwall headliner
- Custom designed decorative wood valance with roman shades & silhouettes in recessed pockets
- Custom columns of African Mahogany, bases custom built
- Welded and polished curved stainless-steel sliding door to aft deck
- Surround-sound speakers

- Entertainment center including pop up 50" TV with AM/FM "surround sound" stereo receiver with DVD/CD player
- Icemaker
- Wine Chiller (UPGRADE)
- Fixed frameless windows with tinted safety glass
- Telephone outlet
- AC and DC light fixtures
- AC dimmable lights
- AC duplex outlets
- Twin leather Custom sofa with storage (UPGRADE)
- Throw pillows
- Chilled water Air conditioning dispersed through decorative valances, port and starboard
- Twin Matching AJ Original custom built high gloss Coffee Tables (UPGRADE)
- End Tables, AJ Original (UPGRADE)
- Buffet with china storage, tops are Granite Old Gold (UPGRADE)
- Custom AJ Originals Dinning table with six chairs (UPGRADE)
- Custom soffit over dinning table
- Side buffets on either side of the dinning table with upgraded Old Gold granite tops and custom built china storage

## Country Galley

---

The country galley is fully functional and includes granite Old Gold countertops and backsplashes. For ease of maintenance, the flooring is AMTICO and is a custom weaved pattern. Appliances include a subzero, stainless steel, full height refrigerator/freezer, full size oven, microwave convection oven, dishwasher, trash compactor, and four burner ceramic cooktop. Forward is a u-shaped , Old Gold granite dining table. To port and starboard, there are panagraph doors leading to the outside for ease of line handling.

- Finished wood bulkheads with high-gloss polyester finish in African mahogany
- Whisperwall headliner
- Fixed frameless windows with tinted safety glass
- Amtico floor basket weave floor design, mahogany light cherry with French navy accent squares
- Old Gold Granite countertops and backsplash with stainless sinks and storage cabinets made of finished wood
- Stainless Steel, Sub-Zero Model 685 upright AC refrigerator with freezer and icemaker
- AC four-burner ceramic cooktop with oven under counter
- Microwave/convection oven
- One-half hp continuous feed garbage disposal
- Telephone outlet
- AC and DC light fixtures
- AC dimmable lights

- AC duplex outlets
- Dishwasher
- Audio system control, LCD keypad and a pair of speakers
- Trash compactor
- SMX HVAC compartment controlled
- Port and Starboard Panagraph doors
- U-shaped Galley with upper cabinets, and Flat Screen 20" TV mounted facing dinette

## Aft Deck/Sport Deck

Molded in steps with teak ,lead up from the sport deck and down from the flybridge. The aft deck provides for built in seating with sunbrella cushions and twin, hi-low teak tables for dining. Additional seating is provided around the teak tables with chairs. For safety, stainless steel gates provide protection to the lower twin stairwells. To starboard you'll find a door from the aft deck provides easy access to the crew staterooms and a second access is found through the transom. Removable, customized hoop rails were built around the swim platform, and additional 100 AMP and 50 AMP retractable shore cords were added to the aft bussel. The sport deck provides access to a hot/cold shower as well as quick disconnects for the salt and freshwater washdown.

### SPORT DECK:

- Molded fiberglass with non-skid sole with Teak Decks
- Freshwater wash down outlet with hose connection and Hatteras patented quick disconnect
- Welded and polished 316L removable stainless-steel hoop rails (UPGRADE)
- Hand-held hot/cold cockpit shower with cover
- Molded-in fiberglass steps with DC lights to aft deck
- Pop-up cleats (2)
- Reboarding ladder, centerline
- Weather-tight Pacific Coast door to crew's quarters and engine room
- Teak swim platform sole (UPGRADE)
- Additional Water Inlet added aft (UPGRADE)

### AFT DECK:

- AC duplex outlet
- AC lighting in hardtop
- Dual molded fiberglass steps, port and starboard, to swim platform with lights
- Molded fiberglass steps to flybridge, with UPGRADED Teak Treads
- Welded and polished 316L stainless-steel gates
- Molded fiberglass with non-skid sole, decks and steps to flybridge and swim platform, with UPGRADED Teak Treads
- Curved polished stainless-steel sliding door to salon
- Audio system control, LCD keypad and a pair of speakers



- Hardtop
- Molded lounge with vinyl-covered Polyfoam cushions and storage underneath, with cover
- Door with stairwell to crew's quarters/engine room
- Twin Aft deck Hi/Lo AJ Original teak tables with covers (UPGRADE)
- Steps to side decks, port and starboard
- Teak Chairs (UPGRADE)
- Teak on the aft deck and the stairs leading to the swim platform and up to the flybridge (UPGRADE)
- (2) Molded flood lights in overhang
- Custom aft deck wet bar with refrigerator (UPGRADE)
- Drop down mini controls, near aft deck Bar (UPGRADE)

---

## Day Head

---

The day head is easily accessed off the salon.

- Old Gold Granite Countertops and backsplash
- Custom Vinyl Wallcovering
- Plexi Mirror overhead (UPGRADE)
- UPGRADED Glass mirror in lieu of plexi on the forward Bulkhead
- Integral sink and storage cabinet
- Headhunter freshwater toilet
- recirculating fan
- AC and DC light fixtures
- AC Duplex outlets
- Air conditioning vent

---

## Lower Forward Companionway

---

A single stairwell from the salon flows to the master and three guest quarters forward, while a separate accessible stairway is conveniently located off of the aft deck for crew and engine room access, for safety while underway. Forward, you'll enjoy a full size washer/dryer hidden behind arched sketch face doors, as well as a small coffee bar at the base of the stairs.

- Carpet
- Whisper wall headliner
- Padded panel wall covering with African Mahogany molding (UPGRADE)
- Washer/dryer
- DC light fixtures
- Lighted stairway to upper deck
- Carpet Runners (UPGRADE)
- Arched sketch-faced passage doors with door stops to master and guest staterooms
- Cedar-lined linen storage locker

- Coffee bar with Old Gold granite top (UPGRADE)

## Master Stateroom

---

The crown jewel of the 80 Motor Yacht is the full-width master stateroom with six oversized portlights, which allow natural light into the area. The combination of spaciousness, natural light and water-level view will stun anyone who enters the room. The master stateroom features a king-size berth with coil-spring mattress and cedar-lined storage beneath. Arched sketch face doorways and beautiful curved cabinetry dress the area. His and her cedar lined lockers as well as dressers and nightstands provide an abundance of storage and for entertaining a 37" TV with surround sound finishes the area nicely.

- Whisperwall padded panel bulkheads
- Finished wood bulkheads with high-gloss polyester finish in African mahogany
- Carpeting
- Whisperwall headliner
- Upholstered berth base
- Decorative wood valance with fixed Roman shade and duettes
- King-sized berth with upholstered headboard and cedar-lined storage underneath, accessed via pneumatic cylinders
- HMC coil spring mattress, spread, throw pillows, pillows, pillow shams
- (3) each port & starboard portlights with (2) each opening on either side (UPGRADE)
- Bowed-front nightstands with drawers
- Bowed-front built-in dressers, port and starboard
- 37" Plasma TV (UPGRADE)
- AM/FM audio access with local DVD/CD changer
- speakers
- AC and DC light fixtures
- AC dimmable lights
- AC duplex outlets
- Telephone outlet
- Arched sketch-faced interior passageway door to head
- Arched sketch-faced doors, with door stop, to companionway Full-length mirror
- Smoke detector
- DC low-level lights
- Safe
- Twin cedar-lined wardrobes with arched passage doors and automatic lights
- SMX HVAC compartment controlled

## Master His and Her Head

---

The master his and her head features Blue Pearl stone countertops, backsplashes, Key stone

floors with an oversized tiled shower with frameless doors.

- Blue Pearl Stone countertops, backsplashes
- 12x12" White Thassos with 2" accent keys of Blue Pearl, Flooring
- 12x12" White Thassos shower tiles with Blue Pearl Bench seat
  
- Custom wallcovering
- Plexi mirror overhead (UPGRADE)
- Integral sink and storage cabinets
- Full Glass Mirror, across entire aft bulkhead (UPGRADE)
- Granite shower with frameless doors
- Towel bars
- Headhunter freshwater toilets
- Recirculating fans
- AC and DC light fixtures
- AC duplex outlets
- Air conditioning vents
- Holding tank 3/4 full indicator light

## Bow Guest Stateroom

---

The Bow is one of three guest staterooms forward each with their own private head. The stateroom provides for a walk-around queen berth with cedar lined storage accessed by gas assisted cylinders beneath. Comfort abounds with a custom built coil spring mattress. You'll find plenty of storage in the cedar lined lockers, port and starboard as well as hullside blanket lockers.

- Carpeting
- Whisperwall padded panels on hullside
- Whisperwall headliner
- Whisperwall padded bulkheads
- Queen-sized tapered berth with upholstered headboard and cedar-lined storage with drawer underneath accessed via pneumatic cylinders
- Upholstered berth base
- HMC coil spring mattress, spread, throw pillows, pillows, pillow shams
- Full-length mirror
- Nightstands, port and starboard
- Mirrored forward bulkhead
- Carbon monoxide detector
- Cedar-lined hanging locker with arched door and automatic light, port and starboard
- Screened overhead hatch with privacy cover
- AM/FM audio access with local DVD/CD changer
- AC and DC light fixtures
- AC dimmable lights

- AC duplex outlets
- Access to port head
- 20" TV with MATV outlet
- Overhead storage cabinets, port and starboard
- Smoke detector
- DC low-level lights under berth
- Steps to bow stateroom with DC low-level lights
- Telephone outlet
- Arched sketch-faced passage door
- stereo speakers
- Fluted wood valance with air conditioning dispersed through soffits, port and starboard
- SMX HVAC compartment controlled
- Private head with granite countertops and Amtico floors

---

## Port VIP Stateroom

---

The port stateroom features a queen walk around berth with hinged cedar line storage below. Additional storage is provided by a cedar lined hanging locker as well as hullside cabinet aft and outboard. Each of "Katherine E's staterooms features access to their own private head.

- Padded bulkheads
- Carpeting
- Whisperwall headliner
- Fluted wood valance with fixed Roman shade and duet with air conditioning dispersed through soffits
- Queen walk around berth with upholstered headboard and storage underneath
- Upholstered berth base
- HMC coil spring mattress, spread, throw pillows, pillow shams, pillows
- Ventilating portlight with screen
- Cedar-lined hanging locker with arched doors and automatic light
- Nightstands with drawers
- Full-length mirror
- AC and DC light fixtures
- AC dimmable lights
- AC duplex outlets
- AM/FM audio access with local DVD/CD changer
- Telephone outlet
- Private access to head by arched door
- 20" TV with MATV outlet
- Smoke detector
- Mirrored aft bulkhead
- Speakers
- SMX HVAC compartment controlled

- Carbon monoxide detector

---

## Starboard Stateroom

---

Unique to "Katherine E" is the starboard stateroom featuring a double berth. o the hull side. Inboard you'll find a dresser with flat screen TV and it's own private head, along with hullside cabinetry.

- Whisperwall padded bulkheads
- Carpeting
- Whisperwall headliner
- Double berth to the hullside (UPGRADE)
- Upper hullside cabinetry
- Polyfoam mattresses, spreads, throw pillows, pillows, pillow shams
- Upholstered berth base
- Cedar-lined hanging locker with automatic light
- Full-length mirror
- Audio system control, LCD keypad and a pair of Boston Acoustics loudspeakers
- AC and DC light fixtures
- AC dimmable lights
- AC duplex outlets
- Private access to head
- Smoke detector
- Carbon monoxide detector
- Sketch-faced door to stateroom
- DC low-level lights under berth
- Telephone outlet
- Dresser
- SMX HVAC compartment controlled
- Private access to head
- 20" LCD TV

---

## Guest HeadS, Bow, Port and Starboard

---

Each suite has its own private head which features full shower, granite countertops, key stone flooring and freshwater heads.

- Each head features Old Gold Granite countertops with integral sink
- African Mahogany lower cabinetry
- 12x12" Thassos white tiles with old gold key stones, Flooring
- Full height showers
- Plexi mirror over head (UPGRADE)

- Towel Bars
- Holding tank 3/4 full indicator light
- AC and DC light fixtures
- AC Duplex outlets
- Air conditioning vents
- Recirculating fan
- Headhunter freshwater toilet

---

## Crew Quarters

---

The crew area is accessed via a transom door, or through a stairwell off the aft deck. Below is a VIP stateroom with a queen walk around berth, a second stateroom providing upper/lower berths and a private head. In addition, this vessel is equipped with a small crew galley and additional washer/dryer.

- Carpeting
- Padded vinyl covering on hullside
- Vinyl headliner
- Queen walk around berth
- Twin upper and Lower Berths
- Padded berth base
- Polyfoam mattress, spread, pillow, pillow shams
- Cedar-lined hanging locker with doors and automatic light
- Full-length mirror
- Telephone outlets, port and starboard
- TV
- AM/FM audio access with local DVD/CD changer
- Boston Acoustics loudspeakers
- AC and DC light fixtures
- AC duplex outlets
- Curved stairwell from aft deck
- Watertight door from swim platform
- SMX HVAC compartment controlled
- Port dinette (UPGRADE)
- Under counter washer/dryer (UPGRADE)

---

## Enclosed Fly Bridge

---

The enclosed flybridge has a large console featuring a full array of electronics with twin helm chairs. Aft you'll find a U shaped sitting area with Old Gold granite table elevated for viewing, just aft of the helm area. To starboard another L-shaped lounge with fixed Old Gold granite table directly in front easily viewing the entertainment area directly across. The entertainment

cabinetry is a u-shaped bar area with pop up TV outboard with a separate icemaker and refrigerator. On the boat deck, a 1500 lb fully hydraulic telescoping unit with a 20" boom allows easy access for the toys.

- Molded fiberglass bridge
- Custom built Welded and polished 316L stainless-steel rails and stanchions
- Starboard L-shaped lounge
- Old Gold Stone table with stainless-steel pedestals
- L-shaped raised seating aft of the helm with Old Gold Stone table
- Custom Basket weaved amtico floor under helm chairs and carpet throughout
- Twin helm chairs
- Forward control station with all necessary switches, single-lever electric clutch and throttle controls, synchronizer, back-up controls, power assisted steering, compass and electronic console
- U Shaped Bar with sink, refrigerator, icemaker and bottle and glass storage
- AM FM stereo with radio access with local DVD/CD changer
- speakers
- Custom SS Double Door to boat Deck (UPGRADE)
- PC Monitor
- Custom radar mast with spreader lights U(PGRADE)

## BOAT DECK

- 1500 lb fully hydraulic davit
- Stainless Steel hoop railing around boat deck (UPGRADE)
- U Shaped fiberglass lounge with Sumbrella cushions surrounding solid surface table with stainless steel pedestals and cover
- Grill
- Hatch access to hardtop with access ladder (UPGRADE)
- Access stairwell to aft deck with hatch, with upgraded teak Steps
- Port & Starboard wing station controls

## Electronics

- North star 6000i 15" GPS plotter
- North star 952XD gps plotter
- (2) Icom VHF radios with remote mikes
- (2) Acr R-100 remote spotlights
- Simrad AP-25 autopilot
- Furuno NavNet black box sounder
- Furuno NavNet black box radar with 6' open array antenna
- Hot Eye night vision
- Furuno depth log
- Furuno sea temp

- Sat TV

---

## Exterior Finish/Construction

---

- Isophthalic gelcoat, exterior layer, white
- Blister-resistant vinylester resin in hull bottom skin coat
- Hull and superstructure, polyurethane coating, Matterhorn white
- Polymer/copper-based anti-fouling bottom paint
- Boot stripe, polyurethane coating, Black
- Decks, non-skid surface, polyurethane paint with polymeric beads
- Solid fiberglass hull bottom
- Hull sides and superstructure laminated with PVC foam core
- Fiberglass stringers
- Steel laminated in stringers at key locations to bolt engine mounts
- Engine room bulkheads and decks of resin-infused composite construction using PVC foam core with layers of fiberglass laminate on each side

---

## Hardware & Miscellaneous

---

Key features to Hatteras brand include: stanchions and cleats are through bolted to aluminum backing plates that are encapsulated into solid fiberglass sections of the superstructure. Molded fiberglass UL approved tanks are placed between the stringers and glassed in place. All fuel tanks are constructed with a fire-retardant resin, and exposed surfaces are coated with a fire-retardant intumescent paint. Bulkheads and stringers are fully tabbed into the hull itself and the stringer system is built of a closed cell polyurethane foam to provide for stiff longitudinal support with no fear of water intrusion.

- Finished wood bulkheads with high-gloss polyester finish in African Mahogany
- All hardware chrome on brass or welded and polished stainless-steel
- Swim platform with welded and polished stainless-steel reboarding ladder
- Welded and polished stainless-steel anchor chute and roller
- 110-pound plow anchor, anchor line and deck hawse pipe
- Windlass, 4,000-pound hydraulic with 300 feet of stainless steel chain with deck-mounted control switches
- Integrated hydraulic digital thruster/ stabilizer system
- Six polished stainless-steel springline cleats with chafing strips, through-bolted in aluminum backing plates
- Bow and stern polished stainless-steel cleats, through-bolted in aluminum backing plates
- Polished 1 1/4 stainless-steel rails on bow, side-deck and flybridge, drilled and tapped in aluminum backing plates
- Boarding gates, port and starboard side decks
- Remote controlled searchlights, (2) on hard top IPGRADE
- UPGRADED hoop rails on the swim platform and boat deck



- Fog bell
- Dual air horns
- Bow sun pad (UPGRADE)
- Alloy 22 high-strength propeller shafts
  
- Manganese bronze dripless shaft and rudder seals
- Stainless-steel trim tabs
- Manganese bronze struts and Alloy 22 high-strength shaft with zincs
- Stainless-steel rudders
- Nibral high performance propellers
- MarQuipt Tide Ride eight-step sea stairs with storage brackets
- Central vacuum
- 1500-pound davit
- Holding tank with sewage pump and overboard discharge
- Freshwater wash down, bow, with Hatteras patented quick disconnect
- Fender tracks
- Deck plates for fuel and water fills and waste pump-out
- Heavy-duty bronze engine couplings
- Engine and generator exhaust exits through hull side near transom
- Generator exhaust, water separator
- Rope locker storage hatch, bow deck
- Deep storage port and starboard, bow trunk
- Pacific Coast door to crew's quarters from sport deck
- Dual air horns

---

## Engine Compartment & Bilge

---

The engine room provides for easy access to equipment and a forced air induction system draws cooling air for the engine room from the flybridge, reducing saltwater intrusion into the engine room.

- Water manifold blocks with centralized shut-off valve for sinks and showers
- Pultruded fiberglass rudder shelf with stainless-steel rudder tie bar
- AC fluorescent lights
- DC lights
- DC exhaust blower
- UPGRADED 1200 GPD water maker
- Twin diesel, freshwater-cooled main engines with electrically controlled marine gears, neutral interlocks, exhaust silencers, engine hour meters, alternators, fuel filters and seawater strainers
  
- FM200 fixed fire extinguishing system for engine/generator compartment with automatic and remote manual controls plus audible and visual discharge signals
- Two AC ventilation fans

- Two 27.5kW freshwater-cooled Electronic Quiet Diesel Onan generators with shock mounts, sound enclosure, remote start, seawater strainer, fuel/water separator, hour meter, and water lift muffler
- Variable speed air induction fans with duct to flybridge for engine combustion air, two 21” vaneaxial fan pressure and temperature controlled
- Polyethylene water lines
- Electric fuel transfer system with filtration and dry tank protection for pump (2)
- Freshwater fill hose for engines and generator
- AC compressed air system with air line and regulator
- Dockside water inlets with pressure regulating valve, automatic dockside tank fill and Hatteras patented quick disconnect
- 24-volt DC bilge and sump pumps
- Bronze/chrome ball valves through-bolted in solid fiberglass on all underwater through-hull fittings with electrical bonding throughout
- 230-volt AC freshwater pump, with pressure tanks located in strategic areas and central charcoal filter with backflush capabilities
- U.L. Marine-listed fiberglass fuel tanks constructed with fire-retardant resin and bronze fittings, and coated with fire-retardant paint
- Fiberglass water tanks, constructed with bronze fittings and materials which comply with the requirements of Title 21 for food and drugs.
- Sewage holding tank with 230-volt AC sewage pump, plumbed for dockside pump-out with 3/4 full display and alarm as part of systems monitor
- 110-volt AC oil changing system for engines, generators and gears with Hatteras patented quick disconnect
- U.L. Marine-listed fuel filter/water separator, generators
- Sealed shower sump
- U.L. Marine-listed duplex fuel filters/water separators with bypass manifold, engines
- Electric fuel priming pumps, 24-volt DC, engines
- Welded and polished 316L stainless-steel overhead grab rails
- AC distribution panels
- DC distribution panels
- Discharge sea chests, stainless-steel steering tie bar with pivoting self-aligning ball joint connection at all cylinder and tie bar connections
- Insulation in deck
- Gray water tanks, (2) plumbed, 126-gallons each, with 230-volt AC sewage pump, plumbed for dockside pump-out with 3/4 full display and alarm as part of systems monitor
- Air conditioning compressors, chilled water, (2) four-ton
- Pick-up sea chests neutral interlocks, exhaust silencers, engine hour meters, alternators, fuel filters and seawater strainers
- Spare fresh water pump (UPGRADE)
- Spare Fuel transfer pump (UPGRADE)

## Electrical

Hatteras is known for their attention to detail, and wiring is one of their strongest points. All wiring is tin-coated and sealed in an insulation jacket. Wiring harnesses are tie-wrapped every 6 inches and secured every 18 inches with easy access. Wiring is color-coded and numbered at both terminal ends, and is well documented in the owner's manual. Go one step further to find their attention to detail in placement of dual light switches on both ends of the salon and companionway for convenience. In addition, this boat has a chilled water air conditioning system that saves on electric. Katherine E has an added 100 amp and 50 amp cord on the aft busel in addition to the standard cords forward.

- Water heaters, one 30-gallon and one 20-gallon midship, and one 6-gallon aft for crew
- Two 24-volt banks of heavy-duty, 12-volt marine batteries (4) mounted in fire-retardant fiberglass boxes
- U.L. 1426 listed boat cable, tin-coated with insulation
- Gel/lead acid compatible 240-volt automatic programmable battery charger, 50/60Hz
- Automatic battery paralleling system with switch at control console
- Two 100-amp transformer connected retractable shore cords covered by hatch, forward,
- AC and DC light fixtures
- Battery control panels with fuses and isolation switches
- DC electronics panels with magnetic circuit breakers
- AC distribution panels with magnetic circuit breakers
- AC switching panel with source selector switches, digital volt meter, ammeter, frequency meter, generator start/stop controls, voltage boost tap switch and interlock selector breakers
- Navigation lights, U.L. certified to United States Coast Guard and ABYC specifications
- Ground fault protection on AC receptacles and lighting circuits
- Chilled water air conditioning with reverse-cycle heating, with soft starting AC compressors, automatically staged and individually controlled with SMX controls in each compartment
- SSB radio ground screen laminated in cabin top
- Telephone/CATV inlet, one each, forward
- Telephone and CATV shoreline cord, one each
- TV antenna, omni-directional
- Remote shore power control (UPGRADE)
- 100amp & 50amp retractable cord in bustle UPGRADE

## Exclusions

---

Owner's personal belongings.

## Disclaimer

---

The Company offers the details of this vessel or yacht in good faith but cannot guarantee or warrant the accuracy of this information nor warrant the condition of the vessel. A buyer should instruct his representatives, agents, or his surveyors, to investigate such details as the buyer desires validated. This vessel or yacht is offered subject to prior sale, price change, or withdrawal

without notice.

# PHOTOS

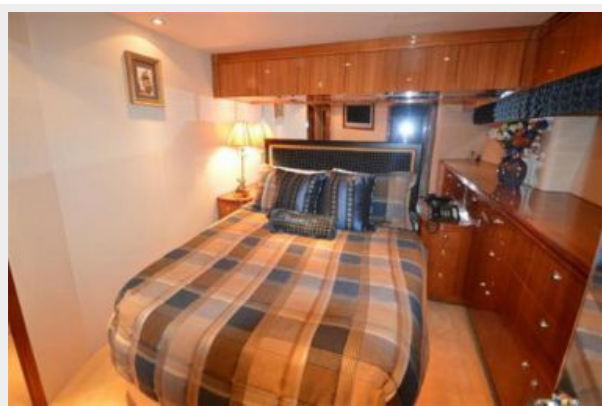




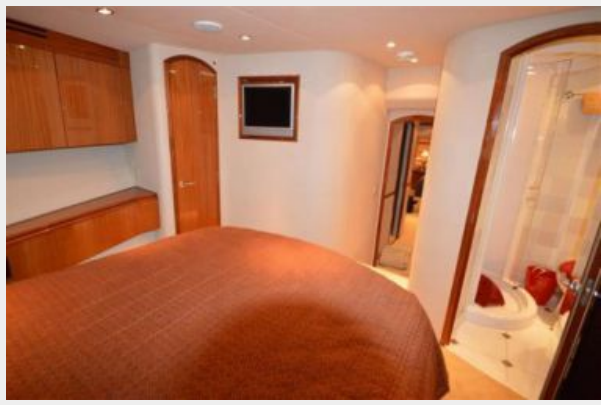
























# CONTACTS

---

Andrey Shestakov, leading yacht broker of the sales department of Shestakov Yacht Sales Inc. Shestakov Yacht Sales Inc., the official representative of the Miami/Fort Lauderdale FL headquarters.

## Contact details

---

Email: [andrey@shestakovyachtsales.com](mailto:andrey@shestakovyachtsales.com)

Web: [shestakovyachtsales.com/en/](http://shestakovyachtsales.com/en/)

## Telephones

---

USA: +1(954)274-4435

## Office hours

---

Monday – Saturday: **9:00 - 21:00** EDT

Sunday: **closed**

## Address

---



Harbour Towne Marina, 850 NE 3rd St,  
STE 213, Dania, FL 33004