

UNNAMED BOAT — SEA RAY



Builder: SEA RAY

Year Built: 2001

Model: Cruiser

Price: PRICE ON APPLICATION

Location: United States

LOA: 28' 0" (8.53m)

Beam: 9' 5" (2.87m)

Max Draft: 2' 10" (0.86m)

Our experienced yacht broker, Andrey Shestakov, will help you choose and buy a yacht that best suits your needs **Unnamed Boat — SEA RAY** from our catalogue. Presently, at Shestakov Yacht Sales Inc., we have a wide variety of yachts available on our sale's list. We also work in close contact with all the big yacht manufacturers from all over the world.

If you would like to buy a yacht **Unnamed Boat — SEA RAY** or would like help answering any questions concerning purchasing, selling or chartering a yacht, please call **+1(954)274-4435**

TABLE OF CONTENTS

TABLE OF CONTENTS	2
SPECIFICATIONS	3
Overview	3
Basic Information	3
Dimensions	3
Speed, Capacities and Weight	3
Accommodations	4
Hull and Deck Information	4
Engine Information	4
DETAILED INFORMATION	5
Walk Through	5
Electronics & Navigation	5
Electrical Systems	6
Deck/Hull/Construction	6
Engineer Room	6
Additional Equipment	6
Salespersons Remarks	6
Exclusions	6
Disclaimer	7
PHOTOS	8
CONTACTS	17
Contact details	17
Telephones	17
Office hours	17
Address	17

SPECIFICATIONS

Overview

Those looking for a small mid cabin family cruiser will find a lot to like in the Sea Ray 280 Sundancer. The styling is crisp--a Sea Ray trademark these days--and the interior makes the most out of available space with berths for four adults (and two kids), decent headroom, a full galley, and a V-berth that converts into a second dinette. Built on a deep-V hull with a moderate beam and an integrated swim platform, the Sundancer's curved radar arch is an appealing design touch that's showing up on a good many express boats these days. The single-level cockpit is arranged with a sun pad opposite the helm, an aft-facing bench seat, wet bar, and a retractable rear bench seat that folds up into the transom when it's necessary to get into the engine compartment. A large storage locker is built into the transom, and molded steps at the helm provide easy access to the walk-through windshield. On the downside, the mid cabin and head dimensions are fairly small, and the engine compartment hatch is heavy. Powered with twin 260hp MerCruiser sterndrives, the 280 Sundancer will cruise in the mid-to-high 20s and reach a top speed in the neighborhood of 40 knots.

Basic Information

Category: Cruiser

Model Year: 2001

Year Built: 2001

Country: United States

Dimensions

LOA: 28' 0" (8.53m)

Beam: 9' 5" (2.87m)

Max Draft: 2' 10" (0.86m)

Speed, Capacities and Weight

Water Capacity: 28 Gallons

Holding Tank: 28 Gallons

Fuel Capacity: 100 Gallons

Accommodations

Total Cabins: 1

Hull and Deck Information

Hull Material: Fiberglass

Engine Information

Manufacturer: Mercruiser

Model: 4.3L EFI

Engine Type: Inboard

Fuel Type: Gas/Petrol

DETAILED INFORMATION

Walk Through

Entering the cockpit from the good sized swim platform one will find a large bench seat across the transom that easily folds down to create a larger cockpit or to accommodate watersports. Across from this bench seat is another seat for two facing aft. To starboard is a wetbar with a good sized storage area underneath. Forward of the wetbar is the helm with captain's chair and a fully appointed woodgrain dash. Opposite of the helm to port is another large L-shaped lounge with a raked back for easy stretching out or sunning. Entering the cabin, the interior is finished in rich high gloss Cherry accented by whites and neutral softgoods. To port is a dinette finished in ultra leather that can convert to a double berth. Opposite of the dinette is a fully appointed galley with solid surface counter tops, sink, recessed stove top, microwave, etc. The forward berth can be open to the salon which adds additional seating and table space or can be converted to a large double berth with privacy curtains. A second double berth is located midships with additional storage, reading lights and a large port which provides natural light as well. The head has plenty of room and features nice touches like a full length mirrored door and a Vacuflush Head system. This boat is like new inside and has a wonderful layout for a vessel this size.

- GE Microwave
- Panasonic TV/VCR
- Kenyon Recessed Stovetop
- Sink with pressurized hot and cold water
- Norcold Fridge
- Vacuflush Head
- Holding Tank Gauge
- Macerator
- 10,000 BTU AC/Heat with SMX II Digital Controls
- Clarion XMD1 Marine Stereo w/ Remote
- Clarion CAA-355 6 Disc Changer
- Built in CD Storage
- Marine Audio MA120 120w Amp

Electronics & Navigation

- Raytheon 210 VHF
- Garmin 176C Color GPS/Chartplotter
- Compass
- ITT Jabsco Remote Searchlight
- Clarion Stereo Remote
- Drive Indicators
- Synchronizer
- Lowrance 3500 Depthfinder

Electrical Systems

- 30 amp Dockside Power
- 30 amp Shorepower Cord
- (3) New Batteries April 2006

Deck/Hull/Construction

Fresh bottom paint in August of 2005

- Sealand 28 Gallon Holding Tank
- Attwood 6 Gallon Hot Water Tank
- Hot/Cold Transom Shower
- Freshwater Washdown
- Cable / Telephone Outlet
- Shorewater Outlet
- Cockpit Sink and Cooler Drawer
- Cockpit Lights
- Radar Arch Lights
- Full Camper Canvas with Isenglass and Screens

Engineer Room

A super clean engine room that is well laid out and shows proper maintenance. Twin 4.3L EFI's make this a very desirable propulsion package!

Additional Equipment

- Cockpit Shower
- Cockpit Table
- Cockpit Cushions
- Swimming Ladder

Salespersons Remarks

"You're In Dock" will not disappoint anyone looking for an express cruiser in this size range. She shows like new, has all the preferred options, and is aggressively priced as the owner has a contract in on another boat. Recent survey done in Spring 2005. This boat is in top condition!

Exclusions

Owner's personal belongings.

Disclaimer

The Company offers the details of this vessel or yacht in good faith but cannot guarantee or warrant the accuracy of this information nor warrant the condition of the vessel. A buyer should instruct his representatives, agents, or his surveyors, to investigate such details as the buyer desires validated. This vessel or yacht is offered subject to prior sale, price change, or withdrawal without notice.

PHOTOS





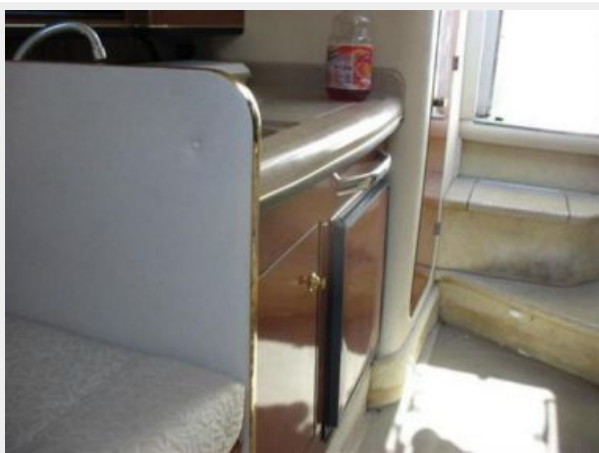


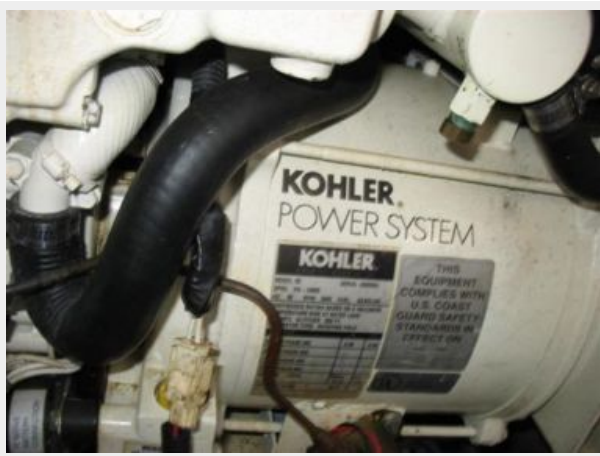












CONTACTS

Andrey Shestakov, leading yacht broker of the sales department of Shestakov Yacht Sales Inc. Shestakov Yacht Sales Inc., the official representative of the Miami/Fort Lauderdale FL headquarters.

Contact details

Email: andrey@shestakovyachtsales.com

Web: shestakovyachtsales.com/en/

Telephones

USA: +1(954)274-4435

Office hours

Monday – Saturday: **9:00 - 21:00** EDT

Sunday: **closed**

Address



Harbour Towne Marina, 850 NE 3rd St,
STE 213, Dania, FL 33004