

ODYSSEY — HATTERAS



Builder: HATTERAS

Year Built: 2005

Model: Motor Yacht

Price: PRICE ON APPLICATION

Location: United States

LOA: 75' 0" (22.86m)

Beam: 18' 2" (5.54m)

Max Draft: 6' 3" (1.91m)

Cruise Speed: 20 Kts. (23 MPH)

Max Speed: 28 Kts. (32 MPH)

Our experienced yacht broker, Andrey Shestakov, will help you choose and buy a yacht that best suits your needs **ODYSSEY — HATTERAS** from our catalogue. Presently, at Shestakov Yacht Sales Inc., we have a wide variety of yachts available on our sale's list. We also work in close contact with all the big yacht manufacturers from all over the world.

If you would like to buy a yacht **ODYSSEY — HATTERAS** or would like help answering any questions concerning purchasing, selling or chartering a yacht, please call **+1(954)274-4435**

TABLE OF CONTENTS

TABLE OF CONTENTS	2
SPECIFICATIONS	5
Overview	5
Basic Information	5
Dimensions	5
Speed, Capacities and Weight	5
Accommodations	5
Hull and Deck Information	6
Engine Information	6
DETAILED INFORMATION	7
Accommodations	7
Salon	7
Galley	8
Master Stateroom	8
Office	8
Double Stateroom - Amidship	8
Double Stateroom - Forward	8
Twin Stateroom - Port	9
Pilothouse	9
Fly Bridge	9
Aft Deck	10
Bow	10
Upgrades	10
Exclusions	11
Disclaimer	11
PHOTOS	12
Salon	12
Salon	12

Dining	12
Galley	12
Dinette	12
Flybridge Stairs	12
Pilothouse	13
Master Stateroom	13
Master Stateroom	13
Office	13
Master Bath	13
Double Stateroom 1	13
Double Head	14
Double Stateroom 1	14
Double Stateroom 2	14
Double Stateroom 2	14
Double Head	15
Twin Stateroom	15
Twin Head	15
Companionway Stairs	15
Laundry	16
Flybridge Helm	16
Flybridge Seating	16
Flybridge Bar	16
Aft Deck	16
Aft Deck Controls	16
Bow	17
Aft View	17
Underwater Lights	17
Profile	17
CONTACTS	18

Contact details	18
Telephones	18
Office hours	18
Address	18

SPECIFICATIONS

Overview

Basic Information

Category: Motor Yacht

Model Year: 2005

Year Built: 2005

Country: United States

Dimensions

LOA: 75' 0" (22.86m)

LWL: 65' 7" (19.99m)

Beam: 18' 2" (5.54m)

Max Draft: 6' 3" (1.91m)

Clearance: 21' 2" (6.45m)

Speed, Capacities and Weight

Cruise Speed: 20 Kts. (23 MPH)

Cruise Speed RPM: 2000 Kts.

Max Speed: 28 Kts. (32 MPH)

Max Speed RPM: 2300 Kts.

Displacement: 128000 Pounds

Water Capacity: 345 Gallons

Holding Tank: 215 Gallons

Fuel Capacity: 1561 Gallons

Accommodations

Total Cabins: 4

Sleeps: 8

Total Heads: 5

Hull and Deck Information

Hull Material: Fiberglass

Hull Color: White

Engine Information

Engines: 2

Manufacturer: Caterpillar

Model: C-30

Engine Type: Inboard

Fuel Type: Diesel

DETAILED INFORMATION

Accommodations

Classic sleek lines, sumptuous interior and proven seakeeping ability merge perfectly in the 75 Sport Deck from Hatteras. Graceful and elegant, this 75 Hatteras has the mostly desired beautiful high gloss Cherry wood interior and custom silhouette duet drapes. The expansive salon features a full entertainment center including surround sound. The fully equipped galley includes an upright refrigerator/freezer with ice maker, dishwasher, four burner cooktop with a full size oven underneath, a convection/microwave oven, and garbage disposal. Air conditioning is routed uniformly through the wood valances the entire length of the salon and galley. The bridge offers even more entertainment possibilities with two L-shaped lounges and a custom wet bar. The flybridge boasts a custom fiberglass hardtop. A fully hydraulic davit is included as standard. The luxurious master suite features a king-size berth, one spacious his and her head with dual sinks and Jacuzzi tub, entertainment center, port and starboard dressers, large walk in closet and under-berth storage. She has the fully functional office option with built-in desk/credenza. Forward accommodations feature an amidships VIP stateroom and bow stateroom with queen berths, TV/VCR combo units and ample storage. The port side crew's stateroom with over/under berths completes the bow layout. All staterooms maintain adjoining heads. The wide companionway leading into the VIP stateroom makes it easy to access the washer/dryer conveniently located just under the pilothouse steps. The spacious pilothouse features a triple cruising seat with storage and sliding doors - port and starboard - for access to the side decks. The electronics console is large and able to house all the electronics that a serious cruiser needs.

Salon

- Birdseye Maple inlay on tables and entertainment center
- Hunter Douglas silhouette duet blinds
- Custom window treatments
- Port side forward of the couch - Birdseye Maple inlay dining table with four custom chairs
- 42" Sony TV
- Surround sound
- Power amp power drive/Architect Model 200
- XM Stereo
- Automatic timers for A/C
- All SMX A/C panels
- Custom handrail
- Storage under couch
- Whisper Wall throughout entire boat

Galley

- C-shaped settee dining starboard side opposite galley
- Black granite with gold flakes
- Whirlpool Quiet Partner II dishwasher
- Whirlpool Gold oven and 4-burner cooktop
- Sharp Carousel Sensor microwave convection oven

Master Stateroom

- Luxurious full beam Master stateroom with high gloss Cherry wood throughout
- King size berth with storage
- Custom spread and shams
- Large walk-in cedar lined closet
- Built-in dressers, port and starboard
- Nightstands with drawers
- Port and starboard opening port lights
- Entertainment center
- Spacious his and her head with dual sinks
- Jacuzzi tub

Office

- Built-in desk/credenza
- Closet
- Head

Double Stateroom - Amidship

- Queen size berth with storage
- Cedar lined closet
- Custom spread and shams
- Custom upholstered headboard
- Custom window treatments with Roman shades
- Private bath with Jacuzzi tub and shower
- Custom granite countertop and flooring in head
- Sony 20" flat screen color TV

Double Stateroom - Forward

- Queen size berth with storage
- Custom upholstered headboard
- Cedar lined closet
- Sony 13" flat screen TV
- Ensuite bath with shower
- Custom granite counter top and flooring in head

Twin Stateroom - Port

- Upper & lower berths with storage
- Custom spreads and shams
- Cedar lined closet
- Private bath with shower
- TV

Pilothouse

- (2) Garmin GPS map 7215 (new 2014)
- Furuno Nav net
- Northstar 60001 GPS
- ICOM M602 radio
- (2) Caterpillar monitors
- Naiad digital roll stabilizers
- FLIR night vision
- Simrad wind and depth
- Hatteras monitoring system
- Fuel tank level indicators
- Furuno 72 mile radar
- Aft control station
- Windshield wipers

Fly Bridge

- Caterpillar monitors
- Hatteras monitoring system
- FLIR night vision camera (new 2014)
- (2) 12" Garmin GPS 7212 color screens (new 2014)
- Garmin GPS map 441S
- Icom radio
- Engine room camera, aft etc
- Simrad AP25 autopilot

- Simrad ind 1515
- Simrad depth recorder 1515
- VHF ICM602 radio
- American bow thruster
- Naiad roll stabilizers
- Ritchie compass
- ACR lights
- Intellian SAT TV (new 2014)\
- (2) Pompanette Hatteras Helm chairs
- 1500lb Marquipt davit
- 15ft AB Tender 15DLX (new 2014)
- 75hp Evinrude E-TEC
- Full wet bar
- Brand new Manitowoc ice maker
- (2) Kenmore deep freezers with covers
- Weber propane grill
- (4) Barstools
- (2)- Corian tabletops plus bar
- U-zips

Aft Deck

- Custom aft deck table with 4 tri-comfort chairs
- Aft deck entry doors starboard & port
- Flybridge access
- Teak Euro transom
- Walk-in Lazerette with water tight door
- Custom hydraulic Opacmare passerelle
- Caterpillar wind control station
- Set up for tender tow

Bow

- (2) Glendenning cablemasters (new 2013)
- 8- fender holders
- Maxwell 4000 Windlass with 100' of chain
- Double windshield cover
- Bow seating

Upgrades

- Fuel tanks polished 2014
- Cutlass bearings replaced 2014
- Shafts pulled - balanced & trued 2014
- Propellers balanced & trued / covered with prop speed

June 2015 Rolly Marine FLL

- Bottom paint Micron CSC
- Repaint boot stripe (Metallic Blue) paint and trim (Aristo Blue)
- New awl Craft paint on outer flybridge exterior (removed gold stripe)
- Repaint aft deck (ladder and brackets removed)
- Repaint transom with new sticker name
- Misc. paint and caulking touch ups
- Prop speed shafts and trim tabs
- Install 10 Ultra series Titan LED underwater lights

Marine Max FLL February/March 2015

- Dropped stabilizers and replace both inside and outside seals and bearings
- Replace bow thruster seals, re-torque prop flush and change oil
- Renew rudder bearings
- Acid wash hull

Misc. June/July 2015

- 1000 service on main engines and gears including remove and acid clean all coolers
- Change impellers, oil and fuel filter change, zincs, misc. gaskets
- Service gensets
- Service watermaker
- Service A/C units throughout vessel

Exclusions

Owner's personal belongings.

Disclaimer

The Company offers the details of this vessel or yacht in good faith but cannot guarantee or warrant the accuracy of this information nor warrant the condition of the vessel. A buyer should instruct his representatives, agents, or his surveyors, to investigate such details as the buyer desires validated. This vessel or yacht is offered subject to prior sale, price change, or withdrawal without notice.

PHOTOS

Salon



Salon



Dining



Galley



Dinette



Flybridge Stairs



Pilothouse



Master Stateroom



Master Stateroom



Office



Master Bath



Double Stateroom 1



Double Stateroom 1



Double Head



Double Stateroom 2



Double Stateroom 2



Double Head



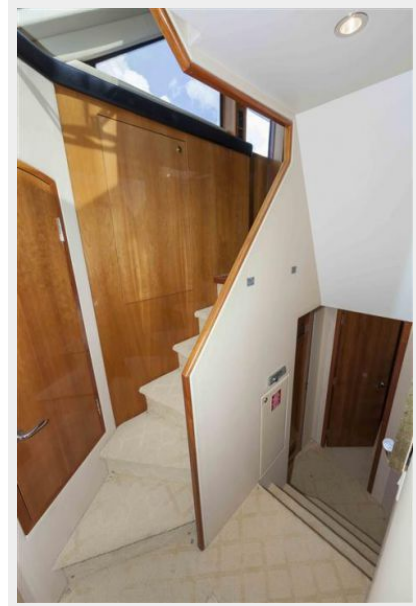
Twin Stateroom



Twin Head



Companionway Stairs



Laundry



Flybridge Helm



Flybridge Seating



Flybridge Bar



Aft Deck



Aft Deck Controls



Bow



Aft View



Underwater Lights



Profile



CONTACTS

Andrey Shestakov, leading yacht broker of the sales department of Shestakov Yacht Sales Inc. Shestakov Yacht Sales Inc., the official representative of the Miami/Fort Lauderdale FL headquarters.

Contact details

Email: andrey@shestakovyachtsales.com

Web: shestakovyachtsales.com/en/

Telephones

USA: +1(954)274-4435

Office hours

Monday – Saturday: **9:00 - 21:00** EDT

Sunday: **closed**

Address



Harbour Towne Marina, 850 NE 3rd St,
STE 213, Dania, FL 33004