

LINA — SUNSEEKER



Builder: SUNSEEKER

Year Built: 2006

Model: Motor Yacht

Price: PRICE ON APPLICATION

Location: Greece

LOA: 64' 4" (19.61m)

Beam: 16' 5" (5.00m)

Max Draft: 4' 11" (1.50m)

Max Speed: 32 Kts. (37 MPH)

Our experienced yacht broker, Andrey Shestakov, will help you choose and buy a yacht that best suits your needs **Lina — SUNSEEKER** from our catalogue. Presently, at Shestakov Yacht Sales Inc., we have a wide variety of yachts available on our sale's list. We also work in close contact with all the big yacht manufacturers from all over the world.

If you would like to buy a yacht **Lina — SUNSEEKER** or would like help answering any questions concerning purchasing, selling or chartering a yacht, please call **+1(954)274-4435**

TABLE OF CONTENTS

TABLE OF CONTENTS	2
SPECIFICATIONS	4
Overview	4
Basic Information	4
Dimensions	4
Speed, Capacities and Weight	4
Accommodations	5
Hull and Deck Information	5
Engine Information	5
DETAILED INFORMATION	6
Accommodations	6
Features	6
Exclusions	6
Disclaimer	6
PHOTOS	7
Sunseeker Manhattan 60 - Lina	7
Sunseeker Manhattan 60 - Flybridge Helm	7
Sunseeker Manhattan 60 - Transom	7
Sunseeker Manhattan 60 - Aft Deck	7
Sunseeker Manhattan 60 - Saloon	7
Sunseeker Manhattan 60 - Saloon	7
Sunseeker Manhattan 60 - Saloon TV	8
Sunseeker Manhattan 60 - Galley	8
Sunseeker Manhattan 60 - Galley	8
Sunseeker Manhattan 60 - Master Stateroom	8
Sunseeker Manhattan 60 - Master Stateroom	8
Sunseeker Manhattan 60 - Guest Cabin	8
Sunseeker Manhattan 60 - Carpet	9

Sunseeker Manhattan 60 - Crew Cabin	9
Sunseeker Manhattan 60 - Crew Cabin	9
Sunseeker Manhattan 60 - Engine Room	9
Sunseeker Manhattan 60 - Engine Room	9
CONTACTS	10
Contact details	10
Telephones	10
Office hours	10
Address	10

SPECIFICATIONS

Overview

2006 Sunseeker Manhattan 60 'LINA'. Sunseeker designed the perfect Mediterranean Motor Yacht with the Manhattan 60. Finished with a satin cherry interior which is complimented perfectly by the cream soft furnishings. A high specification has been applied to this vessel and features include; Air Conditioning, Bimini Top, Flybridge Teak Decking, Opacmare Hydraulic Telescopic Gangway, Bow Thruster and Generator upgrade to Kohler 13Kw 50Hz, to name a few. The powerful 900hp MAN engines were serviced in December 2014 ready for the new season. All enquiries and offers welcome.

Basic Information

Category: Motor Yacht

Sub Category: Flybridge

Model Year: 2006

Year Built: 2006

Country: Greece

Fly Bridge: Yes

Dimensions

LOA: 64' 4" (19.61m)

Beam: 16' 5" (5.00m)

Max Draft: 4' 11" (1.50m)

Speed, Capacities and Weight

Max Speed: 32 Kts. (37 MPH)

Displacement: 68343.30122 Pounds

Water Capacity: 184.9204364 Gallons

Fuel Capacity: 792.516156 Gallons

Accommodations

Total Cabins: 3

Total Berths: 6

Sleeps: 6

Total Heads: 3

Crew Cabin: 1

Crew Berths: 1

Crew Sleeps: 1

Crew Heads: 1

Hull and Deck Information

Hull Material: Fiberglass

Hull Configuration: Planing

Hull Color: Navy

Engine Information

Engines: 2

Manufacturer: MAN

Model: 900

Engine Type: Inboard

Fuel Type: Diesel

DETAILED INFORMATION

Accommodations

2006 Sunseeker Manhattan 60 'LINA', the accommodation comprises of a full beam master suite aft with luxurious en suite facilities, moving forward is a starboard twin berth cabin with en-suite facilities and forward of this is the spacious VIP guest cabin also with en suite facilities. Up on the main deck, following in from the al fresco dining area, you are welcomed in to an informal seating area which flows seamlessly into the formal dining area. Up on the flybridge you will find an abundance of sunbathing and seating areas along with a wet bar, perfect for entertaining.

Features

Raymarine E120 Radar Chartplotter GPS dual station Raymarine ST6000 + Autopilot dual station Raymarine ST60 Tridata dual station Raymarine 240 E VHF Radio dual station MAN helm displays Navtex Compass IMCO Navigation lights Remote spotlight Helm seat in black leather Side opening helm door Kohler 13kw generator Reverse cycle air conditioning throughout Bow thruster Hydraulic lifting platform Hydraulic passarelle Underwater lights Teak laid Teak laid cockpit & steps Teak laid bathing platform Overhead & low level lights to aft cockpit Aft Cockpit cover in Navy Canvas Flybridge bimini top in navy canvas Flybridge instrument cover Flybridge sunbathing area Bow sunbathing area forward Stainless steel deck cleats x 8 Delta anchor & 45m galvanised chain Electric anchor winch & capstan with deck & cockpit controls DVD with Surround sound system in saloon 32" Flatscreen TV in saloon Flatscreen TVs in saloon, master cabin, VIP cabin, starboard guest cabin Radio / CD player with speakers to aft cockpit & flybridge Ceramic hob Hob extractor fan Microwave / combination oven Fridge / Freezer Dishwasher Washer / dryer Drinks cabinet to saloon Safe Stainless steel hydraulic trim tabs AC shorepower / battery charger Water maker Fresh water marine connection Vacuum toilet system with holding tank Stainless steel swimming platform

Exclusions

Owner's personal belongings.

Disclaimer

The Company offers the details of this vessel or yacht in good faith but cannot guarantee or warrant the accuracy of this information nor warrant the condition of the vessel. A buyer should instruct his representatives, agents, or his surveyors, to investigate such details as the buyer desires validated. This vessel or yacht is offered subject to prior sale, price change, or withdrawal without notice.

PHOTOS

Sunseeker Manhattan 60 - Lina



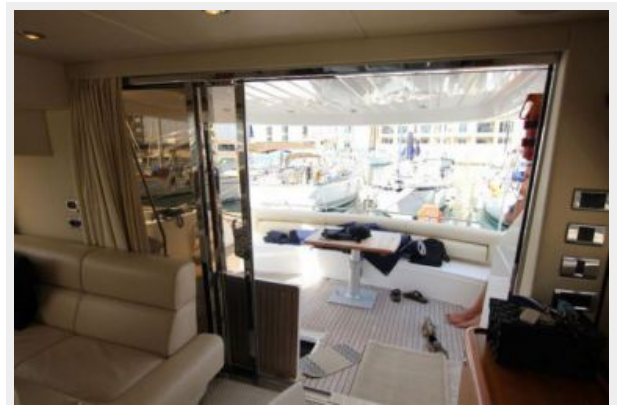
Sunseeker Manhattan 60 - Flybridge Helm



Sunseeker Manhattan 60 - Transom



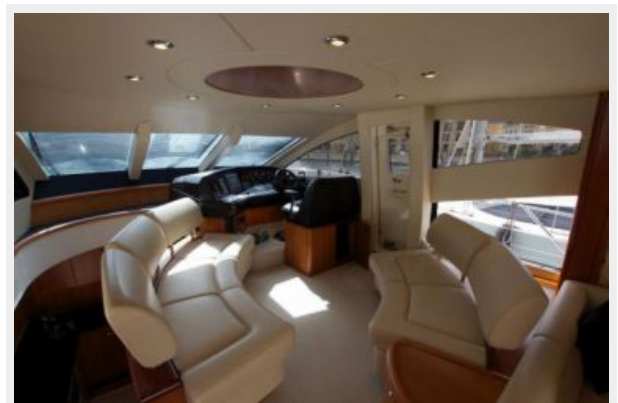
Sunseeker Manhattan 60 - Aft Deck



Sunseeker Manhattan 60 - Saloon



Sunseeker Manhattan 60 - Saloon



Sunseeker Manhattan 60 - Saloon TV



Sunseeker Manhattan 60 - Galley



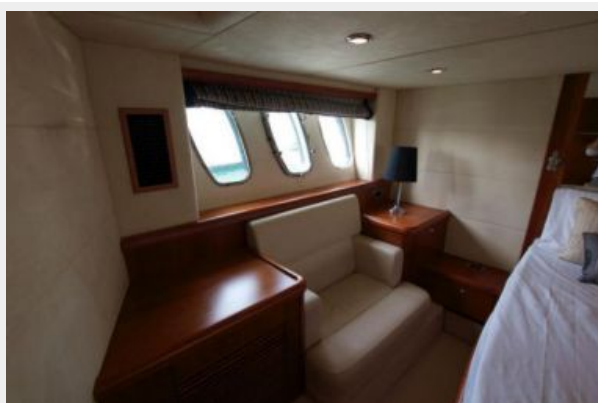
Sunseeker Manhattan 60 - Galley



Sunseeker Manhattan 60 - Master Stateroom



Sunseeker Manhattan 60 - Master Stateroom



Sunseeker Manhattan 60 - Guest Cabin



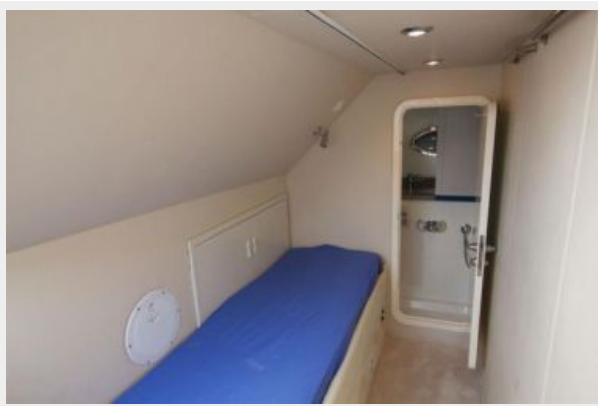
Sunseeker Manhattan 60 - Carpet



Sunseeker Manhattan 60 - Crew Cabin



Sunseeker Manhattan 60 - Crew Cabin



Sunseeker Manhattan 60 - Engine Room



Sunseeker Manhattan 60 - Engine Room



CONTACTS

Andrey Shestakov, leading yacht broker of the sales department of Shestakov Yacht Sales Inc. Shestakov Yacht Sales Inc., the official representative of the Miami/Fort Lauderdale FL headquarters.

Contact details

Email: andrey@shestakovyachtsales.com

Web: shestakovyachtsales.com/en/

Telephones

USA: +1(954)274-4435

Office hours

Monday – Saturday: **9:00 - 21:00** EDT

Sunday: **closed**

Address



Harbour Towne Marina, 850 NE 3rd St,
STE 213, Dania, FL 33004