

DIANA — HATTERAS



Builder: HATTERAS

Year Built: 2002

Model: Sport Fisherman

Price: PRICE ON APPLICATION

Location: United States

LOA: 60' 2" (18.34m)

Beam: 17' 4" (5.28m)

Max Draft: 5' 1" (1.55m)

Cruise Speed: 25 Kts. (29 MPH)

Max Speed: 33 Kts. (38 MPH)

Our experienced yacht broker, Andrey Shestakov, will help you choose and buy a yacht that best suits your needs **DIANA — HATTERAS** from our catalogue. Presently, at Shestakov Yacht Sales Inc., we have a wide variety of yachts available on our sale's list. We also work in close contact with all the big yacht manufacturers from all over the world.

If you would like to buy a yacht **DIANA — HATTERAS** or would like help answering any questions concerning purchasing, selling or chartering a yacht, please call **+1(954)274-4435**

TABLE OF CONTENTS

TABLE OF CONTENTS	2
SPECIFICATIONS	4
Basic Information	4
Dimensions	4
Speed, Capacities and Weight	4
Accommodations	4
Hull and Deck Information	5
Engine Information	5
DETAILED INFORMATION	6
Preliminary Specifications	6
Upgrades	6
Layout	6
Machinery	7
Electrical Systems	7
Tanks	7
Fittings & Equipment	8
Safety & Fire Equipment	8
Other Electronics & Equipment	8
Remarks	10
Exclusions	10
Exclusions	10
Disclaimer	10
PHOTOS	11
CONTACTS	16
Contact details	16
Telephones	16
Office hours	16
Address	16

SPECIFICATIONS

Basic Information

Category: Sport Fisherman

Sub Category: Convertible

Model Year: 2003

Year Built: 2002

Country: United States

Coast Guard #: 736666

Vessel Top: Full / Tuna Tower

Dimensions

LOA: 60' 2" (18.34m)

Beam: 17' 4" (5.28m)

Max Draft: 5' 1" (1.55m)

Speed, Capacities and Weight

Cruise Speed: 25 Kts. (29 MPH)

Cruise Speed RPM: 1850 Kts.

Max Speed: 33 Kts. (38 MPH)

Max Speed RPM: 2300 Kts.

Displacement: 83000 Pounds

Water Capacity: 200 Gallons

Holding Tank: 100 Gallons

Fuel Capacity: 1747 Gallons

Accommodations

Total Cabins: 3

Sleeps: 6

Total Heads: 3

Hull and Deck Information

Hull Material: Fiberglass

Deck Material: Fiberglass

Hull Configuration: Semi Vee

Hull Finish: Fiberglass

Engine Information

Engines: 2

Manufacturer: Caterpillar

Model: 3412

Engine Type: Inboard

Fuel Type: Diesel

DETAILED INFORMATION

Preliminary Specifications

This Company offers the details of this vessel in good faith but cannot guarantee or warrant the accuracy of this information nor warrant the condition of the vessel. A buyer should instruct his agents, or his surveyors, to investigate such details as the buyer desires validated. This vessel is offered subject to prior sale, price change, or withdrawal without notice.

Upgrades

- Watermakers by Watermaker, Inc. – 950 gpm, 1140 rp, WMSQ-950-230V AR-3/4 – 115V, Auto rinse for EP-2000, 3 CK-950-1250, Clean & Maint. Kit, 950/1 CP5-BB-C, Element, 5-Micron, CASE PP30-BB-C, Element, 30-Micron, CASE
- Pipewelders Tower
- High Seas Technology did all marine electronics

Layout

Diana has the standard 3 stateroom 3 head Hatteras 60 Convertible layout. Master Stateroom is portside with a full walk-around tapered queen berth and has a full head and stall shower. Across from Master Stateroom is Upper and Lower twin berth stateroom with its own head and stall shower. All the way forward is the center-lined tapered queen berth VIP Stateroom with full head and stall shower. Galley is up with low profile countertop with six drawer refrigerator/freezers. There is a large dinette to starboard and an L-Shaped settee teak coffee table to port. Moving out salon door to a very large cockpit with tackle center, live well, freezer, Murray Brothers offset rocket launcher. Up ladder to fully enclosed air conditioned flybridge.

- Main Salon – Beautiful Cherry interior with a custom L-shaped lounge and large Panasonic flat screen TV, AM/FM, CD/DVD and Surround Sound Stereo System. Wood Valances, Hoshizaki Ice maker, central vacuum throughout the boat.
- Galley – Sub Zero under counter (6 drawer) refrigerator and (2 drawer) freezer system, Sharp microwave/convection oven, Whirlpool 4-burner electric cooktop, Solid Surface Countertops, Insinkerator Garbage Disposal, washer and dryer.
- Master Stateroom – Large Master Stateroom with walk-around queen berth HMC custom mattress, two cedar lined hanging lockers, entertainment center and private head.
- VIP Stateroom – Queen berth HMC custom mattress, cedar lined hanging lockers, screened hatch, AM/FM stereo and CD Player, Sharp flatscreen TV.
- Guest Stateroom – Upper/Lower berth HMC custom mattress, cedar lined hanging locker, Sharp TV, Stereo and speakers

Machinery

- Type: 2xCaterpillar Diesel with approximately 1270 hours
- HP/RPM: 1400 each @ 2300
- Location: Port and starboard under Salon sole
- Model: 3412
- Serial Numbers: (P) 9KS01646/ (S) 9KS01645
- Engine Bed: Fiberglass
- Engine Cooling System: Freshwater
- Pan Under Engine: Integral with Hull
- Fuel Filters: Dual Racor primary and dual Caterpillar secondary
- Oil Change System
- Exhaust Line: Hose connected to stainless steel risers (done by Raymarine December 2014)
- Exhaust Silencer: Fiberglass water collector type muffler
- Cooled: Sea Water
- Controls: Electronic
- Reduction Gear: ZF 2555
- ZF Ratio: 3.450:1
- Shaft Logs: Fiberglass with Flex
- Packing Gland: Dripless
- Propeller Shafts: 3-1/2" stainless steel

Electrical Systems

- Aux Generator: Onan 21.5kw, 4 Cylinder, 1800 rpm
- Model: 21.5MDKAE41539C
- Location: Aft of Starboard Engine
- Fresh water cooled
- Voltage: 120/240
- Exhaust Line: Hose connected to fiberglass muffler
- Fuel Filters: Racor primary and spin-on secondary
- Batteries: (4) 12-Volt for 24-volt systems
- Battery Location: Outboard of engines in covered battery boxes
- Battery Charging: Sentry 24V60A
- Lighting: 24-volt DC and 120-volt AC
- Air Conditioning: All Cruise Air with SMX
- 24Volt-110Volt-240 Volt
- Wiring: Thermoplastic and molded rubber
- Switchboards: Engine room, under flybridge console and forward companionway locker

Tanks

- Fuel: Diesel, three tanks approximately 1747 gallons. Located under aft deck, forward in engine room and bilge under forward companionway. Material is fiberglass.
- Water: Two tanks approximately 200 gallons. Located under Master Stateroom and Starboard Stateroom soles. Material is fiberglass.
- Holding Tanks: One tank approximately 100 gallons. Located under forward Stateroom sole. Material is fiberglass. Macerator pump out and deck pumpout

Fittings & Equipment

- Deck Hardware: Stainless steel and aluminum
- Steering Gear: Hynautic hydraulic
- Ground Tackle: Danforth H3100 anchor with 7/16" 300' chain and 1" nylon rode
- Anchor Windlass: Maxwell 24-volt
- Radar: Furuno
- Depth Finder: Brookes & Gatehouse HS2000
- GPS: Northstar 952X
- Compass: Ritchie Powerdamp
- VHF Radio: Icom IC-M127
- Autopilot: Simrad AP20
- Knotlog: Brookes & Gatehouse HS2000
- Nav./Anchor Lights: Electric
- Searchlight: ACR with remote control
- Horn: Compressed Air
- Hot Water: Electric
- Air Conditioning: Cruisair (five units)
- Antennas: (4) VHF, (2) GPS, radar, sat-phones and sat-radio
- Bilge Pumps: (4) Electric automatic and (1) electric automatic shower pump

Safety & Fire Equipment

- Flares
- Life Jackets
- Life Ring
- Givens Life Raft
- (7) Kidde 10 B:C dry chemical portable extinguishers
- Sea-Fire FM200 Built-in System
- Bell

Other Electronics & Equipment

- Bennett trim tabs

- Battery parallel system
- Northstar 6100i GPS video chart plotter
- Furuno FCV-1200L color video depth sounder
- Northstar 1202 TV screen
- VDO rudder angle indicator
- (3) 24-volt windshield wipers with freshwater rinse
- Anchor windlass remote control at flybridge station
- Pioneer AM/FM/CD stereo on flybridge
- Wet bar on flybridge with U-Line refrigerator
- Plumber for ice maker in flybridge
- WalVac built-in vacuum on flybridge
- Stidd helm pedestal seat
- ACR 406 MHz EPIRB
- Flybridge aft helm station with Northstar 600i GPS and Icom IC-M502 radio
- (6) flybridge rail mounted rod holders
- Tuna tower
- Brookes & Gatehouse HS200 depth sounder/knotlog on tower
- Icom IC-M402 VHF radio on tower
- Tower mounted forward and aft quartz lights
- Freshwater washdown on tower
- Rupp triple spreader outriggers and center rigger
- (8) cockpit coaming flush mounted rod holders
- Murray Brothers offset rocket launcher
- Cockpit tackle locker with freshwater sink
- Cockpit freezer
- Built-in live bait well
- Freshwater and sea water washdowns in cockpit
- Freshwater washdown in tower
- (2) cockpit boarding steps
- (2) Glendinning shore power cord retractors
- Dockside telephone and cable TV systems
- Transom door
- Swim boarding steps
- (3) Underwater lights
- Bow anchor pulpit
- Houseaki icemaker in Salon
- Panasonic 42" flatscreen TV in Salon with Pioneer DVD player
- Yamaha AV receiver
- Sharp Carousel microwave/convection oven
- ISE sink garbage disposal
- Whirlpool clothes washer and dryer
- Sharp flatscreen TV in Starboard Stateroom
- Sharp flatscreen TV in Master Stateroom
- Engine Room mechanical gauges

- Oil change system
- Water Makers, Inc. desalinator
- Spare carpet runners (like new)

Remarks

Diana is a must-see for anyone looking for an enclosed bridge sportfisherman! She is an original owner, very low hour (1270) boat. She has been maintained to the highest yachting standards, easy to see at in Fort Lauderdale.

Exclusions

Exclusions to include but are not limited to owner's personal items. A detailed list of exclusions to be provided at time of sale.

Exclusions

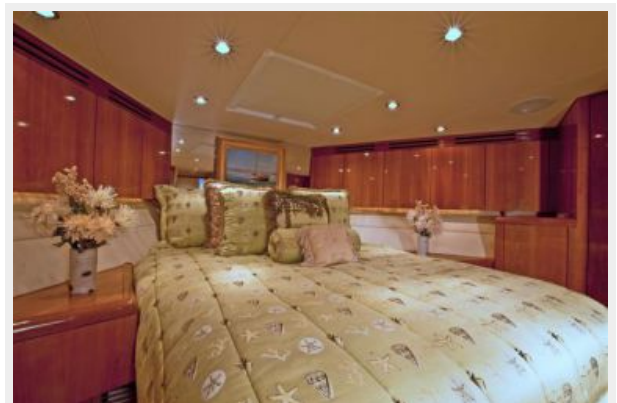
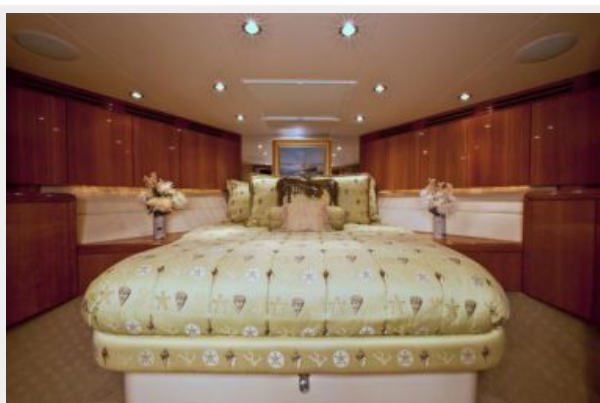
Owner's personal belongings.

Disclaimer

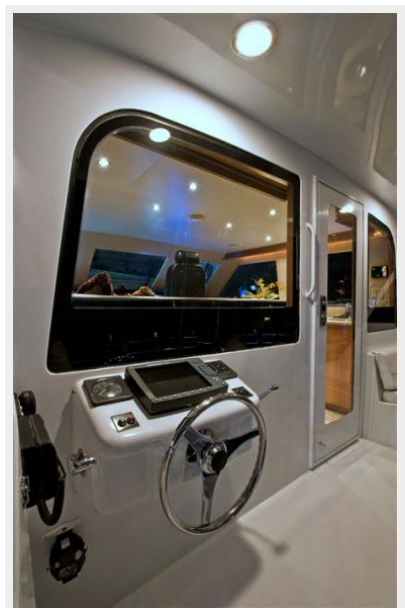
The Company offers the details of this vessel or yacht in good faith but cannot guarantee or warrant the accuracy of this information nor warrant the condition of the vessel. A buyer should instruct his representatives, agents, or his surveyors, to investigate such details as the buyer desires validated. This vessel or yacht is offered subject to prior sale, price change, or withdrawal without notice.

PHOTOS











CONTACTS

Andrey Shestakov, leading yacht broker of the sales department of Shestakov Yacht Sales Inc. Shestakov Yacht Sales Inc., the official representative of the Miami/Fort Lauderdale FL headquarters.

Contact details

Email: andrey@shestakovyachtsales.com

Web: shestakovyachtsales.com/en/

Telephones

USA: +1(954)274-4435

Office hours

Monday – Saturday: **9:00 - 21:00** EDT

Sunday: **closed**

Address



Harbour Towne Marina, 850 NE 3rd St,
STE 213, Dania, FL 33004