

NO NAME — MAINSHIP



Builder: MAINSHIP

LOA: 39' 0" (11.89m)

Year Built: 1999

Beam: 14' 2" (4.32m)

Model: Trawler

Max Draft: 3' 8" (1.12m)

Price: PRICE ON APPLICATION

Location: United States

Our experienced yacht broker, Andrey Shestakov, will help you choose and buy a yacht that best suits your needs **No name — MAINSHIP** from our catalogue. Presently, at Shestakov Yacht Sales Inc., we have a wide variety of yachts available on our sale's list. We also work in close contact with all the big yacht manufacturers from all over the world.

If you would like to buy a yacht **No name — MAINSHIP** or would like help answering any questions concerning purchasing, selling or chartering a yacht, please call **+1(954)274-4435**

TABLE OF CONTENTS

TABLE OF CONTENTS	2
SPECIFICATIONS	3
Overview	3
Basic Information	6
Dimensions	6
Speed, Capacities and Weight	6
Accommodations	7
Hull and Deck Information	7
Engine Information	7
PHOTOS	8
CONTACTS	18
Contact details	18
Telephones	18
Office hours	18
Address	18

SPECIFICATIONS

Overview

WOW!!! Don't let the price fool you! This Mainship Is in Great Shape!!

Absolutely The Cleanest and best equipped on the market!! Extra Clean!! Loaded With Equipment!! Great Layout!! Don't Miss Out!! Call Today!! Live Your Dreams!! This Mainship Won't Last Long!!

Additional Specs, Equipment and Information: **Specs** Builder: Mainship 350/390 **Dimensions** LOA: 39 ft 0 in Beam: 14 ft 2 in Maximum Draft: 3 ft 8 in Displacement: 22000 lbs **Engines** Engine 1: Engine Brand: Caterpillar Engine Model: 3116 Engine Type: Inboard Engine/Fuel Type: Diesel Engine Hours: 2000 Drive Type: Direct Drive Engine Power: 300 HP **Tanks** Fresh Water Tanks: (130 Gallons) Fuel Tanks: (300 Gallons) Holding Tanks: (30 Gallons) **Accommodations** Number of double berths: 2 Number of cabins: 2 Number of heads: 1 **Outside Equipment/Extras** Electric windlass

Dimensions

Max Bridge Clearance: 18'8 approx Displacement: 22000

Engines Total Power: 300

Tanks Fuel: 300 Fresh Water: 130 Holding: 30

Accommodations, Cabin

Climb aboard this wonderfully maintained two owner boat. She has been loved and cared for since the day she was first splashed. Every thing clean, neat, functional, cataloged, and logged. This vessel is beautifully appointed with teak and holly salon floors, leather reclining sofa, corian counter tops, built in coffee maker, microwave and entertainment center. She sleeps four in two forward staterooms. The master has the popular island queen bed and the guest has a double bed. They share a large extra clean head with a stall shower and vacuflush system. The main salon has a leather sofa to starboard and galley to port with the entertainment center built in just aft of the galley. The lower helm station is to starboard and sliding glass doors open to the cockpit veranda. A built in spiral stair case leads to the expansive flybridge with it's full enclosure.

- Master Cabin with Queen Berth Roomy guest Cabin
- Vacuflush Head w/ Tankwatch monitor
- Vanity - Shower Stall
- Lower Helm
- Galley forward to port
- Reclining Sofa
- Beautiful table

- Flat Screen TV
- Follow Me Digital TV Receiver
- Multi Disc AM/FM CD
- Plenty of storage through-out
- Cherry Interior
- Large Sliding Door to Cockpit w/Screen
- Cedar Lined Lockers
- Central Vacuum

Galley This super clean galley is up to port. It has everything the chef needs to make elegant meals or just a quick snack. The up galley allows the chef to chat with the crew and the large windows allows views of all your destinations.

- Novacool refrigerator/freezer
- Princess 3 burner electric stove & oven
- Built-in coffee maker
- Built-in microwave oven
- Single lever faucet
- Stainless steel sink
- New Water heater 11/09
- Pressure water system

Electronics

This boat has it all!!! Ready to safely push off to all of your dream locations!!

- Raymarine C120 GPS Color Chart plotter
- Simrad 320 differential GPS color chartplotter w/ remote on bridge
- (2) Ratheon 210 VHF Radios
- Raydata VX speed,depth,temp
- Simrad RA771-UA Radar w/ repeater @ lower helm
- Ray Marine Radar
- Robertson Autopilot

Electrical

- Kohler 9kw Generator Battery has its own solar panel for charging
- Solar Panel
- Freedom 2000 Inverter w/separate battery and monitor in salon
- AC/DC converter, 50 amp battery safety switches
- AC and DC Control Panel
- 2X 50ft, 30 amp shorepower cords
- Fwd & Aft connections
- Bonding System w/Transom mounted Zinc Anode

- Circuit Breakers (AC/DC)
- Color Coded wiring Harnesses
- 3X Electric Bidge Pumps w/auto switch
- GFCI Protection Throughout
- Interior Lights
- Macerator w/overboard discharge
- Reverse Polarity Indicator

Hull and Deck Equipment

This boat Features A Beautiful Navy Blue Hull! Wonderful Shine!!

- Full Bridge Canvas
- 40 Gauge Strataglass enclosure
- Upper Rail Lee Cloth
- Flybridge Seat Covers
- Flybridge Stairway Cover
- Windless
- Plow Anchor
- 250' of Chain
- Refrigerator in Cockpit
- Fresh Bottom Paint 2/15
- New 2/15 Captain Chair Cushions
- Cockpit Stair Storage Locker
- (2) Stainless Steel Rod Holders
- Additional Mid-ship Cleats
- Shower in Aft Cockpit
- Additional Grab Rails
- Weaver Snap Davits And Motor Mount
- Brushed Aluminum Fender Racks

Mechanical and Engine Room

Just like the rest of this great boat! NEAT, TIDY, AND EVERYTHING IN GREAT WORKING ORDER!!!

- Oil exchange system for engine, generator, and transmission
- Duel Racor Fuel Filters
- FloScan Flometer #7500
- (2) reverse cycle air conditioners
- Sleipner sidepower bow thruster
- Cabin and bridge controls
- Engine Alarm
- Seastar hydraulic steering

- Bennett trim tabs
- 2 x 150 gallon self levelling aluminum fuel tanks
- Raw water strainer on a/c pump
- Halon Fire extinguishing system
- Fuel filters
- Fresh water cooling system
- Engine fuel shut off valves
- ZF 2.45:1 transmission
- Vacuflush head with holding tank and macerator for discharge

Brokers Comments

WOW!!! Don't let the price fool you! This Mainship Is in Great Shape!!

Absolutely The Cleanest and best equipped on the market!! Extra Clean!! Loaded With Equipment!! Great Layout!! Don't Miss Out!! Call Today!! Live Your Dreams!! This Mainship Won't Last Long!!

Basic Information

Category: Trawler

Model Year: 1999

Year Built: 1999

Country: United States

Dimensions

LOA: 39' 0" (11.89m)

Beam: 14' 2" (4.32m)

Max Draft: 3' 8" (1.12m)

Speed, Capacities and Weight

Displacement: 22000 Pounds

Water Capacity: 130 Gallons

Holding Tank: 30 Gallons

Fuel Capacity: 300 Gallons

Accommodations

Total Cabins: 2

Hull and Deck Information

Hull Material: Fiberglass

Engine Information

Engines: 1

Manufacturer: Caterpillar

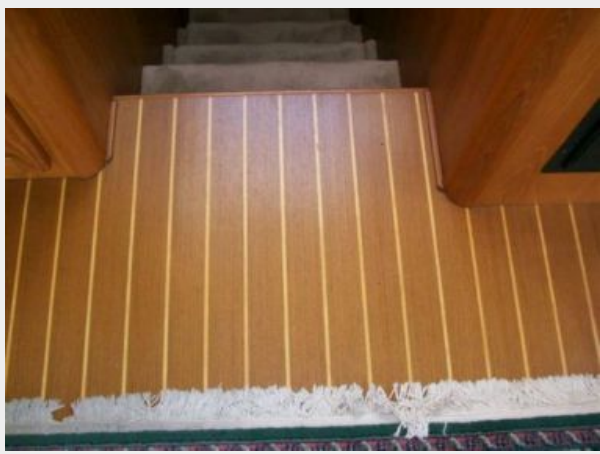
Model: 3116

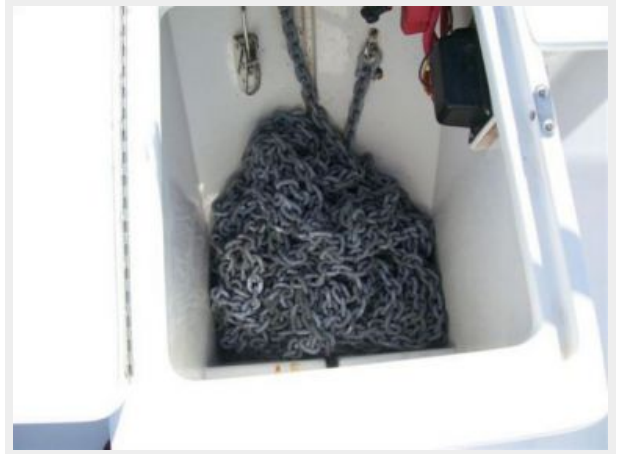
Engine Type: Inboard

Fuel Type: Diesel

PHOTOS

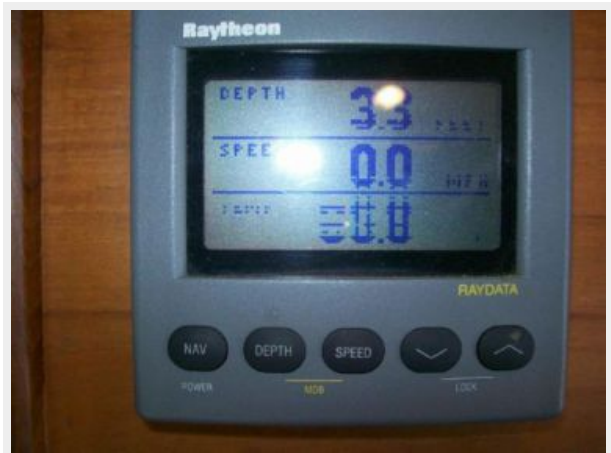




















CONTACTS

Andrey Shestakov, leading yacht broker of the sales department of Shestakov Yacht Sales Inc. Shestakov Yacht Sales Inc., the official representative of the Miami/Fort Lauderdale FL headquarters.

Contact details

Email: andrey@shestakovyachtsales.com

Web: shestakovyachtsales.com/en/

Telephones

USA: +1(954)274-4435

Office hours

Monday – Saturday: **9:00 - 21:00** EDT

Sunday: **closed**

Address



Harbour Towne Marina, 850 NE 3rd St,
STE 213, Dania, FL 33004