

NO NAME — MAINSHIP



Судостроитель: MAINSHIP

Год постройки: 1999

Модель: Траулер

Цена: ЦЕНА ЯХТЫ ПО ЗАПРОСУ

Местонахождение: United States

Длина общая: 39' 0" (11.89m)

Ширина: 14' 2" (4.32m)

Макс. осадка: 3' 8" (1.12m)

Купить No name — MAINSHIP а также выбрать подходящую вам яхту из нашего каталога яхт вам поможет опытный яхтенный брокер Андрей Шестаков. На сегодняшний день компания Shestakov Yacht Sales Inc. имеет большое количество яхт в собственном списке продаж, а также тесно сотрудничает со всеми крупными яхтенными производителями по всему миру.

Для того чтобы купить яхту No name — MAINSHIP а также проконсультироваться по любому вопросу связанному с покупкой, продажей, чартером яхт позвоните по телефону **+7(918)465-66-44**.

ОГЛАВЛЕНИЕ

ОГЛАВЛЕНИЕ	2
ХАРАКТЕРИСТИКИ	3
Обзор	3
Основная информация	6
Размеры	6
Скорость, вместимость и масса	6
Размещение	7
Корпус и палуба	7
Информация о двигателе	7
ФОТОГРАФИИ	8
КОНТАКТЫ	18
Контактная информация	18
Телефоны	18
Время работы	18
Адрес	18

ХАРАКТЕРИСТИКИ

Обзор

WOW!!! Don't let the price fool you! This Mainship Is in Great Shape!!

Absolutely The Cleanest and best equipped on the market!! Extra Clean!! Loaded With Equipment!! Great Layout!! Don't Miss Out!! Call Today!! Live Your Dreams!! This Mainship Won't Last Long!!

Additional Specs, Equipment and Information: **Specs** Builder: Mainship 350/390 **Dimensions** LOA: 39 ft 0 in Beam: 14 ft 2 in Maximum Draft: 3 ft 8 in Displacement: 22000 lbs **Engines** Engine 1: Engine Brand: Caterpillar Engine Model: 3116 Engine Type: Inboard Engine/Fuel Type: Diesel Engine Hours: 2000 Drive Type: Direct Drive Engine Power: 300 HP **Tanks** Fresh Water Tanks: (130 Gallons) Fuel Tanks: (300 Gallons) Holding Tanks: (30 Gallons) **Accommodations** Number of double berths: 2 Number of cabins: 2 Number of heads: 1 **Outside Equipment/Extras** Electric windlass

Dimensions

Max Bridge Clearance: 18'8 approx Displacement: 22000

Engines Total Power: 300

Tanks Fuel: 300 Fresh Water: 130 Holding: 30

Accommodations, Cabin

Climb aboard this wonderfully maintained two owner boat. She has been loved and cared for since the day she was first splashed. Every thing clean, neat, functional, cataloged, and logged. This vessel is beautifully appointed with teak and holly salon floors, leather reclining sofa, corian counter tops, built in coffee maker, microwave and entertainment center. She sleeps four in two forward staterooms. The master has the popular island queen bed and the guest has a double bed. They share a large extra clean head with a stall shower and vacuflush system. The main salon has a leather sofa to starboard and galley to port with the entertainment center built in just aft of the galley. The lower helm station is to starboard and sliding glass doors open to the cockpit veranda. A built in spiral stair case leads to the expansive flybridge with it's full enclosure.

- Master Cabin with Queen Berth Roomy guest Cabin
- Vacuflush Head w/ Tankwatch monitor
- Vanity - Shower Stall
- Lower Helm
- Galley forward to port
- Reclining Sofa
- Beautiful table

- Flat Screen TV
- Follow Me Digital TV Receiver
- Multi Disc AM/FM CD
- Plenty of storage through-out
- Cherry Interior
- Large Sliding Door to Cockpit w/Screen
- Cedar Lined Lockers
- Central Vacuum

Galley This super clean galley is up to port. It has everything the chef needs to make elegant meals or just a quick snack. The up galley allows the chef to chat with the crew and the large windows allows views of all your destinations.

- Novacool refrigerator/freezer
- Princess 3 burner electric stove & oven
- Built-in coffee maker
- Built-in microwave oven
- Single lever faucet
- Stainless steel sink
- New Water heater 11/09
- Pressure water system

Electronics

This boat has it all!!! Ready to safely push off to all of your dream locations!!

- Raymarine C120 GPS Color Chart plotter
- Simrad 320 differential GPS color chartplotter w/ remote on bridge
- (2) Ratheon 210 VHF Radios
- Raydata VX speed,depth,temp
- Simrad RA771-UA Radar w/ repeater @ lower helm
- Ray Marine Radar
- Robertson Autopilot

Electrical

- Kohler 9kw Generator Battery has its own solar panel for charging
- Solar Panel
- Freedom 2000 Inverter w/separate battery and monitor in salon
- AC/DC converter, 50 amp battery safety switches
- AC and DC Control Panel
- 2X 50ft, 30 amp shorepower cords
- Fwd & Aft connections
- Bonding System w/Transom mounted Zinc Anode

- Circuit Breakers (AC/DC)
- Color Coded wiring Harnesses
- 3X Electric Bidge Pumps w/auto switch
- GFCI Protection Throughout
- Interior Lights
- Macerator w/overboard discharge
- Reverse Polarity Indicator

Hull and Deck Equipment

This boat Features A Beautiful Navy Blue Hull! Wonderful Shine!!

- Full Bridge Canvas
- 40 Gauge Strataglass enclosure
- Upper Rail Lee Cloth
- Flybridge Seat Covers
- Flybridge Stairway Cover
- Windless
- Plow Anchor
- 250' of Chain
- Refrigerator in Cockpit
- Fresh Bottom Paint 2/15
- New 2/15 Captain Chair Cushions
- Cockpit Stair Storage Locker
- (2) Stainless Steel Rod Holders
- Additional Mid-ship Cleats
- Shower in Aft Cockpit
- Additional Grab Rails
- Weaver Snap Davits And Motor Mount
- Brushed Aluminum Fender Racks

Mechanical and Engine Room

Just like the rest of this great boat! NEAT, TIDY, AND EVERYTHING IN GREAT WORKING ORDER!!!

- Oil exchange system for engine, generator, and transmission
- Duel Racor Fuel Filters
- FloScan Flometer #7500
- (2) reverse cycle air conditioners
- Sleipner sidepower bow thruster
- Cabin and bridge controls
- Engine Alarm
- Seastar hydraulic steering

- Bennett trim tabs
- 2 x 150 gallon self levelling aluminum fuel tanks
- Raw water strainer on a/c pump
- Halon Fire extinguishing system
- Fuel filters
- Fresh water cooling system
- Engine fuel shut off valves
- ZF 2.45:1 transmission
- Vacuflush head with holding tank and macerator for discharge

Brokers Comments

WOW!!! Don't let the price fool you! This Mainship Is in Great Shape!!

Absolutely The Cleanest and best equipped on the market!! Extra Clean!! Loaded With Equipment!! Great Layout!! Don't Miss Out!! Call Today!! Live Your Dreams!! This Mainship Won't Last Long!!

Основная информация

Тип судна: Траулер

Модельный год: 1999

Год постройки: 1999

Страна: United States

Размеры

Длина общая: 39' 0" (11.89m)

Ширина: 14' 2" (4.32m)

Макс. осадка: 3' 8" (1.12m)

Скорость, вместимость и масса

Водоизмещение: 22000 Pounds

Вместимость воды: 130 Gallons

Вместимость сточного бака: 30 Gallons

Объем топливного бака: 300 Gallons

Размещение

Всего кают: 2

Корпус и палуба

Материал корпуса: Fiberglass

Информация о двигателе

Двигатели: 1

Производитель: Caterpillar

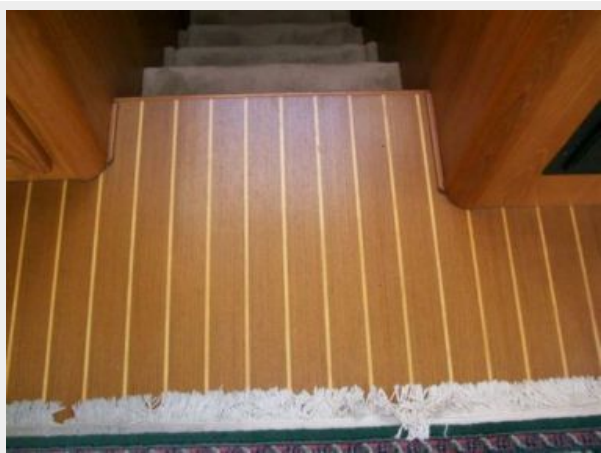
Модель: 3116

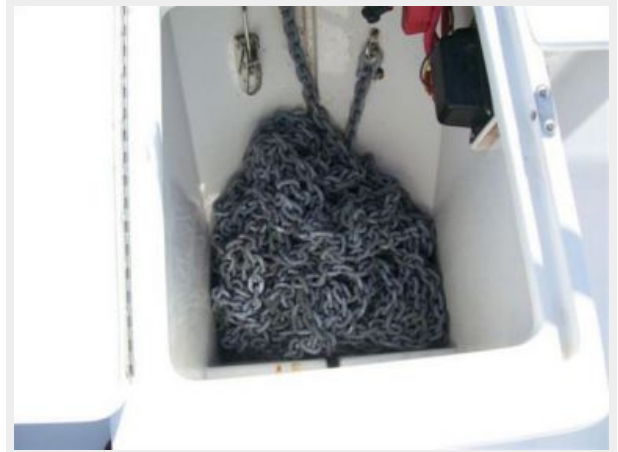
Тип двигателя: Inboard

Тип топлива: Diesel

ФОТОГРАФИИ

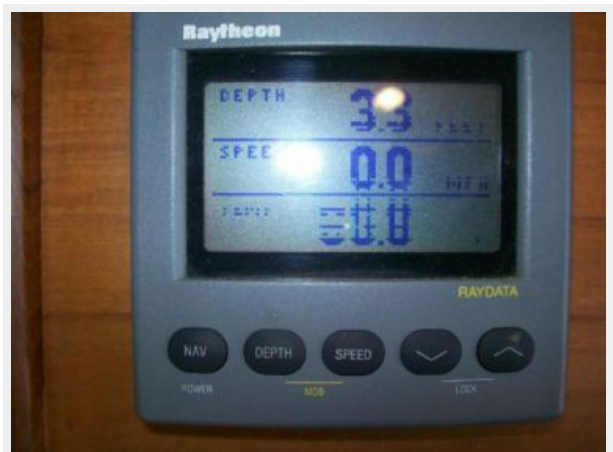




















КОНТАКТЫ

Андрей Шестаков (Andrey Shestakov) – ведущий яхтенный брокер отдела продаж яхт и судов компании Shestakov Yacht Sales Inc. Официальный представитель Shestakov Yacht Sales Inc. для русскоговорящих клиентов в центральном офисе компании в Майами/Форт Лодердейл/Флорида/США.

Контактная информация

Email: andrey@shestakovyachtsales.com

Web: shestakovyachtsales.com

Телефоны

Краснодарский край: **+7(918)465-66-44**

США, Майами, Флорида: **+1(954)274-4435**

Время работы

Понедельник – Суббота: **9:00 - 21:00**
EDT

Воскресенье: **Закрыто**

Адрес



Harbour Towne Marina, 850 NE 3rd St,
STE 213, Dania, FL 33004