

"NO NAME" — AZIMUT



Builder: AZIMUT

Year Built: 2014

Model: Cruiser

Price: PRICE ON APPLICATION

Location: United States

LOA: 38' 0" (11.58m)

Beam: 11' 8" (3.56m)

Max Draft: 3' 5" (1.04m)

Our experienced yacht broker, Andrey Shestakov, will help you choose and buy a yacht that best suits your needs "No Name" — AZIMUT from our catalogue. Presently, at Shestakov Yacht Sales Inc., we have a wide variety of yachts available on our sale's list. We also work in close contact with all the big yacht manufacturers from all over the world.

If you would like to buy a yacht "No Name" — AZIMUT or would like help answering any questions concerning purchasing, selling or chartering a yacht, please call +1(954)274-4435

TABLE OF CONTENTS

TABLE OF CONTENTS	2
SPECIFICATIONS	5
Basic Information	5
Dimensions	5
Speed, Capacities and Weight	5
Accommodations	5
Hull and Deck Information	5
Engine Information	5
DETAILED INFORMATION	6
Engines	6
Exclusions	6
Disclaimer	6
PHOTOS	7
Port Profile	7
Port Profile 2	7
Bow	7
Port Bow	7
Starboard Bow	8
Starboard Profile 2	8
Profile	8
Stern View	8
Port Side	8
Stern View 2	8
Starboard Side	9
Bow Close Up	9
Sliding Roof	9
Bow 3	9
Cockpit	9

Cockpit 2	9
Cockpit Table	10
Cockpit 3	10
Manual Bilge/ Cockpit Shower	10
Cockpit Door	10
Swim Ladder	10
Passerelle Control	10
Cockpit Galley	11
Cockpit Galley 2	11
Cockpit Ice Maker	11
Cockpit Refrigerator	11
Fusion Stereo	11
Helm	11
VHF	12
Switch Panel	12
Bow Thruster/ Auto Pilot	12
Helm Electronic	12
Volvo Joystick	12
Salon Door	12
Helm Seat	13
Retractable Top	13
Salon Access	13
Retractable Top Open	13
Salon Seating	13
Salon Seating 2	13
Galley	14
Galley 2	14
Forward Stateroom	14
Forward Stateroom 2	14

Forward Stateroom Closet	15
Forward Stateroom 3	15
Head/Shower	15
Control Panel (Salon)	15
Head/Sink	16
Salon Table/Overhead Storage	16
2nd Stateroom	16
Salon Table	16
2nd Stateroom 2	17
2nd Stateroom 3	17
2nd Stateroom 4	17
2nd Stateroom Closet	17
Port Engine	17
Starboard Engine	17
Engine Room	18
Passerelle	18
Passerelle 2	18
Generator	18
Bilge	18
CONTACTS	19
Contact details	19
Telephones	19
Office hours	19
Address	19

SPECIFICATIONS

Basic Information

Category: Cruiser

Sub Category: Express

Model Year: 2014

Year Built: 2014

Country: United States

Dimensions

LOA: 38' 0" (11.58m)

Beam: 11' 8" (3.56m)

Max Draft: 3' 5" (1.04m)

MFG Length: 38' 1" (11.61m)

Speed, Capacities and Weight

Water Capacity: 48 Gallons

Fuel Capacity: 200 Gallons

Accommodations

Total Cabins: 2

Hull and Deck Information

Hull Material: Fiberglass

Engine Information

Engines: 2

Manufacturer: Volvo

Model: D4

Engine Type: Inboard

Fuel Type: Diesel

DETAILED INFORMATION

Engines

- Twin Volvo D4 300's
- Only 140 Hours - 100 Hours Service Completed
- Mase Generator I.S. 9.6kW - 137 Hours
- All services performed by local dealer

Exclusions

Owner's personal belongings.

Disclaimer

The Company offers the details of this vessel or yacht in good faith but cannot guarantee or warrant the accuracy of this information nor warrant the condition of the vessel. A buyer should instruct his representatives, agents, or his surveyors, to investigate such details as the buyer desires validated. This vessel or yacht is offered subject to prior sale, price change, or withdrawal without notice.

PHOTOS

Port Profile



Port Profile 2



Port Bow



Bow



Starboard Bow



Starboard Profile 2



Profile



Stern View



Stern View 2



Port Side



Starboard Side



Bow Close Up



Sliding Roof



Bow 3



Cockpit



Cockpit 2



Cockpit Table



Cockpit 3



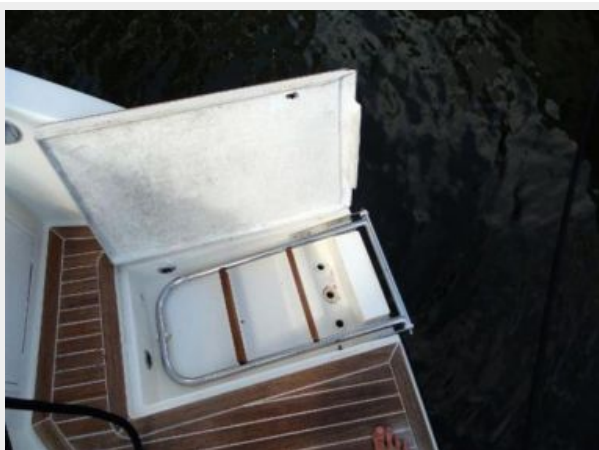
Manual Bilge/ Cockpit Shower



Cockpit Door



Swim Ladder



Passerelle Control



Cockpit Galley



Cockpit Galley 2



Cockpit Ice Maker



Cockpit Refrigerator



Fusion Stereo



Helm



Switch Panel



VHF



Bow Thruster/ Auto Pilot



Helm Electronic



Volvo Joystick



Salon Door



Helm Seat



Retractable Top



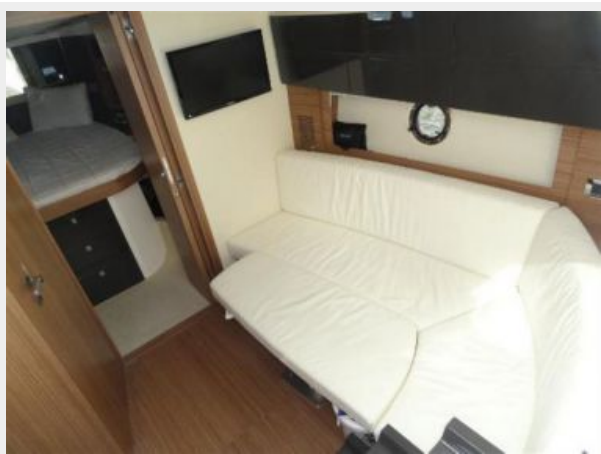
Retractable Top Open



Salon Access



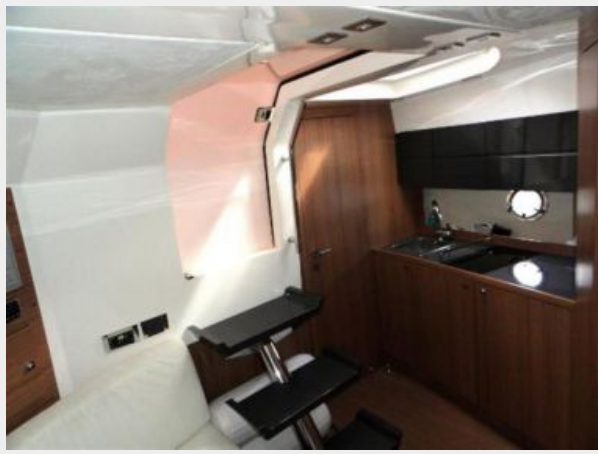
Salon Seating



Salon Seating 2



Galley



Galley 2



Forward Stateroom



Forward Stateroom 2



Forward Stateroom 3



Forward Stateroom Closet



Control Panel (Salon)



Head/Shower



Head/Sink



Salon Table/Overhead Storage



2nd Stateroom

Salon Table



2nd Stateroom 2



2nd Stateroom 3



2nd Stateroom 4



2nd Stateroom Closet



Port Engine



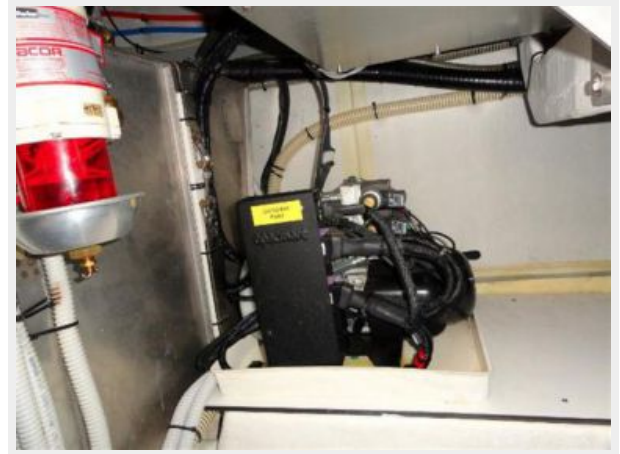
Starboard Engine



Engine Room



Passerelle



Passerelle 2



Generator



Bilge



CONTACTS

Andrey Shestakov, leading yacht broker of the sales department of Shestakov Yacht Sales Inc. Shestakov Yacht Sales Inc., the official representative of the Miami/Fort Lauderdale FL headquarters.

Contact details

Email: **andrey@shestakovyachtsales.com**

Web: shestakovyachtsales.com/en/

Telephones

USA: +1(954)274-4435

Office hours

Monday – Saturday: **9:00 - 21:00** EDT

Sunday: **closed**

Address



Harbour Towne Marina, 850 NE 3rd St,
STE 213, Dania, FL 33004