

WADDLE WE DO — OCEAN ALEXANDER



Builder: OCEAN ALEXANDER

Year Built: 2009

Model: Motor Yacht

Price: PRICE ON APPLICATION

Location: United States

LOA: 80' 0" (24.38m)

Beam: 20' 0" (6.10m)

Min Draft: 5' 11" (1.80m)

Max Draft: 5' 11" (1.80m)

Cruise Speed: 21 Kts. (24 MPH)

Max Speed: 25 Kts. (29 MPH)

Our experienced yacht broker, Andrey Shestakov, will help you choose and buy a yacht that best suits your needs **WADDLE WE DO — OCEAN ALEXANDER** from our catalogue. Presently, at Shestakov Yacht Sales Inc., we have a wide variety of yachts available on our sale's list. We also work in close contact with all the big yacht manufacturers from all over the world.

If you would like to buy a yacht **WADDLE WE DO — OCEAN ALEXANDER** or would like help answering any questions concerning purchasing, selling or chartering a yacht, please call **+1(954)274-4435**

TABLE OF CONTENTS

TABLE OF CONTENTS	2
SPECIFICATIONS	5
Basic Information	5
Dimensions	5
Speed, Capacities and Weight	5
Accommodations	5
Hull and Deck Information	6
Engine Information	6
DETAILED INFORMATION	7
Accommodations & Interior	7
Salon	7
Galley	7
Master Stateroom	8
Master Head	8
Forward Guest Stateroom	9
Port Guest Stateroom	9
Heads	9
Crew Quarters	9
Pilothouse	10
Control & Navigation	10
Hull, Superstructure and Decks	11
Hardware & General Equipment	12
Electrical System	13
Engine Room	13
Note	14
Exclusions	14
Disclaimer	14
PHOTOS	16

Layout Drawings	16
Bow Views	16
Anchor Views	16
Side Passageway	16
Salon	17
Salon	17
Salon	17
Salon	17
Salon	17
Lower Deck Helm	17
Lower Deck Helm - Galley	18
Galley	18
Passageway Salon to Galley	18
Stairs to Master Stateroom	18
Master Stateroom	18
Master Stateroom	18
Master Stateroom TV	19
Master Head	19
Master Head	19
Guest Twin	19
Guest Twin	20
Stairso to Lower Deck	20
Lower Deck Landing	20
Stairs to Fly Bridge	20
Fly Bridge Helm	21
Fly Bridge Side Driving Station	21
Fly Bridge Seating	21
Fly Bridge Hot Tub	21
Tendor on Davit	21

Fly Bridge - Grill	21
Aft Deck	22
Aft Deck	22
Crew Quarters Head	22
Engine Room	22
Engine Room	22
Engine Room	22
CONTACTS	23
Contact details	23
Telephones	23
Office hours	23
Address	23

SPECIFICATIONS

Basic Information

Category: Motor Yacht

Sub Category: Pilothouse

Model Year: 2010

Year Built: 2009

Country: United States

Vessel Top: Hardtop

Fly Bridge: Yes

Dimensions

LOA: 80' 0" (24.38m)

Beam: 20' 0" (6.10m)

Min Draft: 5' 11" (1.80m)

Max Draft: 5' 11" (1.80m)

MFG Length: 84' 1" (25.63m)

Speed, Capacities and Weight

Cruise Speed: 21 Kts. (24 MPH)

Max Speed: 25 Kts. (29 MPH)

Water Capacity: 367 Gallons

Holding Tank: 292 Gallons

Fuel Capacity: 2500 Gallons

Fuel Consumption: 1 Gallons

Accommodations

Total Cabins: 3

Total Berths: 4

Sleeps: 6

Total Heads: 5

Captain Cabin: True

Crew Cabin: 2

Crew Berths: 3

Crew Sleeps: 3

Crew Heads: 1

Hull and Deck Information

Hull Material: Fiberglass

Deck Material: Teak and Fiberglass

Hull Configuration: Semi-Displacement

Hull Color: White

Hull Finish: Aluminum

Hull Designer: ED MONK JR

Exterior Designer: Ocean Alexander

Engine Information

Engines: 2

Manufacturer: Caterpillar

Model: C32A

Engine Type: Inboard

Fuel Type: Diesel

DETAILED INFORMATION

Accommodations & Interior

- Sakura paneling and cabinetry
- Soft vinyl headliners
- Push-button handles for drawers & cupboards
- Round top corners, cabin entrance doors
- Hidden hinges on cabinet doors
- Cruisair chilled water central AC w/ECU controls
- Sakura for window frames and bull-nose
- Hi-gloss varnish for interior finish
- Hanging lockers with dual-locking mechanism
- S/S hardware
- Inner spring mattresses for berths
- Standard bevel edge bullnose for granite countertop throughout boat, except for shower seats & shelves
- Additional washer/dryer in hallway

Salon

- Sakura paneling and cabinetry
- Soft vinyl headliners
- Push-button handles for drawers & cupboards
- Round top corners, cabin entrance doors
- Hidden hinges on cabinet doors
- Cruisair chilled water central AC w/ECU controls
- Sakura for window frames and bull-nose
- Hi-gloss varnish for interior finish
- Hanging lockers with dual-locking mechanism
- S/S hardware
- Inner spring mattresses for berths
- Standard bevel edge bullnose for granite countertop throughout boat, except for shower seats & shelves
- Additional washer/dryer in hallway

Galley

- Granite/marble countertops
- Storage cabinets and drawers
- Franke double sink with faucet

- Disposal and lazy susan in corner
- Spice rack w/sliding panels at port of stove
- Crockery cabinet inside galley end cabinet
- Overhang cabinet in galley
- Sakura cabinetry
- 36" Amana Easy Reach refrigerator - side by side French doors with ice and water in door
- Full-sized microwave/convection oven
- 24" Gaggenau gas cook top
- 24" Gaggenau electric oven
- 24" Dishwasher
- Seagull water purifier
- 12" Trash compactor

Master Stateroom

- King-sized berth with inner spring mattress
- Two nightstands
- Bureau on port side
- Sit down vanity with divided pencil drawer, mirrored hinge doors behind to access shallow storage, plus a 110V outlet adjacent with total of 5 down lights over vanity
- 24V LED lights
- Safe in hanging locker
- Full-height, cedar-lined hanging lockers with automatic lighting
- Walk-in closet
- Closet with additional shoe shelves starboard side plus shelves port side
- 37" LCD TV with Marantz/Denon professional sound system with IR repeater S/S oval portholes with screens
- Shoji screens
- Octoplex unit at aft port corner
- Under bed storage accessed from the doors in the Master Head

Master Head

- Sakura walls & cabinets with onyx countertops
- 24V light
- China sink
- Grohe faucets for sink and shower
- Shoji Screen
- Keuco bathroom fixtures
- Mirrored sliding cabinet door under head port light
- Teak and holly plank flooring
- Mirrored door on medicine cabinet

- Tecma toilet system
- Vent blower
- Seamless fiberglass stall shower w/one-piece glass door
- Corner onyx seat in Master shower
- S/S oval port light w/screen
- GFI (110V only) AC outlet
- Onyx in shower floor

Forward Guest Stateroom

- Queen-sized berth with innerspring mattress
- Two drawers under bed
- 24V LED lights
- Sony DVD/CD audio stereo and video system with IR repeater
- Cedar-lined hanging lockers with automatic lighting
- Dressing mirror
- 23" LCD TV
- S/S oval port light w/ curtains at both sides and one overhead hatch

Port Guest Stateroom

- Side-by-side lower berths, fabric covered
- Head with stall shower
- 24V LED lights
- Sharp 20" LCD TV with DVD/CD audio stereo and video system
- Cedar-lined hanging lockers with automatic lighting
- Dressing mirror
- S/S oval port light w/privacy screen

Heads

- Side-by-side lower berths, fabric covered
- Head with stall shower
- 24V LED lights
- Sharp 20" LCD TV with DVD/CD audio stereo and video system
- Cedar-lined hanging lockers with automatic lighting
- Dressing mirror
- S/S oval port light w/privacy screen

Crew Quarters

- Captain's cabin
- Cedar-lined hanging locker with automatic lighting
- Galley with cooktop, sink, microwave and refrigerator
- 20" LCD TV with DVD/CD audio stereo and video system
- Storage locker
- Drawers under bunk
- 110V Outlet under captain's bunk
- Secondary access via swim platform
- Maytag 2400A WW stacked washer/dryer
- Head with stall shower
- Foggy glass in shower
- Half-high wall in head

Pilothouse

- Sunken and extended dash with instrumentation
- U-shaped dinette with chart drawer beneath
- Granite top table with storage cabinet beneath
- Windshield defrosters
- Water-tight doors to side deck
- Phantom screen with dedicated wood box for side doors
- 24v LED lights
- Ultraleather Bayon Blue for helm/mullion dash
- Second electric STIDD helm seat in pilothouse (bayon blue ultraleather)
- Pop-out service door for electronics computer under settee

Control & Navigation

- 360 Commercial Zenon searchlight with FLIR w/3 sets of controls
- Two control stations: flybridge and pilothouse with complete engine instrumentation with lighted, modern switches. Maretron in 3 locations. Octoplex in 4.
- Navigation package with NEMA 2000
- International navigation lights
- Third control on aft deck (engine & thruster)
- Electric engine control
- Engine alarm system, audio oil and temperature
- Engine hour meters
- Complete engine instrumentation, two stations/CAT
- Heavy-duty Kahlenberg air horn
- Powermax amplifier/repeater system
- Nobeltec navigation on Dell computer
- KVH Satellite TV antenna

- KVH multiSat control panel
- HDTV satellite receivers (5)
- Axis camera system
- Charlex C-phone 93 communication w/handset
- (2) Icom VHF transceiver with repeater on flybridge
- Rupp VHF antenna
- Simrad AP28 Autopilot
- Accu-steer reversible pump
- Furuno Navnet Radar
- Furuno FUR-MFDBB black box
- Furuno LCD chart plotter
- Furuno network sounder
- Maretron GPS antenna
- Furuno BBW GPS antenna
- Maretron weather station
- Netgear Ethernet switch
- Furuno AIS receiver
- Newmar hailer
- Extra speakers in Pilothouse and flybridge connected to salon entertainment system with volume control in each area
- Glass bridge monitors

Hull, Superstructure and Decks

- Carbon fiber-infused composite hull and decks
- Longitudinal and lateral fiberglass stringers filled with high density foam
- Fiberglass hand laid with "vacuum bag technology"
- White gelcoat on exterior
- Airex C70.90 PVC foam construction above waterline
- Fly bridge seat w/storage underneath
- Blue boot top stripe
- Tempered and safety glass
- Fiberglass settee with oval teak table on aft deck
- Deck, superstructure and flybridge with AL600 aluminum I-beam reinforcements
- Steelhead SM 1750R davit (hydraulic boom, rotation and extension)
- Interior structural components all bonded to hull
- Reinforced collision bulkhead
- Hard top
- Interprotect epoxy based antifouling/anti osmosis system
- Convenience lights, lower deck and fly bridge
- Teak side decks, aft deck, swim platform, fly bridge, and forward decks
- Swimming ladder
- (4) U-shape rails on swimstep, extra set of placement holes for when one rail is moved

- Tinted frameless window
- Fire Magic gas BBQ grill on fly bridge
- Sink, refrigerator, and icemaker
- Second and third bottle storage to locker on fly bridge
- Sea water washdown at fly bridge
- Teak swimstep
- Teak side decks for main deck
- Teak aft deck
- FRP bar cabinet w/sink and stools on aft deck
- Cabinet w/built-in flat screen TV, refrigerator with icemaker on aft deck
- Hot tub on fly bridge deck
- Safety rail & GRP cabinet w/shower set and hot water spigot inside, shower pole on top
- Fly bridge table top corian w/standard bevel bullnose
- Granite aft deck bar countertop w/standard bevel bullnose
- Additional AC air handler for engine room and (2) for fly bridge, chilled water
- Boarding gate next to pilothouse port door
- Hinged mast head light for bridge clearance
- Railing on both sides of all stairs
- Air compressor adapters at lazarette, engine room and fly bridge
- Handheld shower attachment to hot tub for shower on fly bridge
- Deck safety lights and steps at sides of hot tub
- Aft deck control station
- Boat deck sliding hatch with safety rail
- Stainless steel safety gates w/glass inserted at both sides of aft deck
- Flip-up rail w/removable middle rail for boarding ladder

Hardware & General Equipment

- Sakura steering wheel inside & S/S on Flybridge
- Stainless steel plow anchor 125lbs
- 2" elliptical S/S handrails on main deck, 1-1/2" on Flybridge
- S/S cleats & hawse holes
- S/S anchor roller
- S/S swivel anchor light bracket
- Trim tabs
- Muir VRC4000C windlass
- Sea- & fresh-water wash down, at bow & stern
- S/S handrails on back transom
- Watertight doors at pilot house
- Keypower hydraulic bow thruster 36hp, stern 25hp with proportional control
- High performance, computer-designed and machined class "S" propellers
- Pantograph windshield wipers & washers w/intermittent function
- Fresh water wash down on fly bridge and anchor locker

- Propeller shafts, Aquatech 22HS
- Bronze through-hull fittings
- Zincs on rudders, shafts & trim tabs
- Teak bow and stern staffs
- 3M Thinsulate system for sound and temperature
- (2) STIDD mechanical helm seats in fly bridge (white)
- Bronze struts w/cutlass bearing
- S/S rudders
- Aft deck shower, dock-side water (one unit)
- TV/phone inlet (one unit)
- Keypower hydraulic stabilizers
- Lighted OA logo
- Quash and lead foam sound and vibration insulation
- (3) Underwater lights
- Isolated hot water heaters

Electrical System

- Heavy-duty batteries, 4 each AGM 8D batteries for engines, 4 AGM 8D batteries for house bank, AGM 4D battery for each generator
- Engine battery disconnect switch
- Battery paralleling system with control switch
- Service battery switch
- 4000W inverter/charger (pure sine wave)
- GFI reset in the main electrical panel
- Vimar switches and outlets
- 24V lights in all compartments
- Floodlights aft hardtop (1), aft boat deck (2)
- Polarity reverse indicating light
- Marine-grade, tinned copper wiring
- VOLT and AMP meters
- Navigation cellular amplifier (PowerMax DA4000SBR)
- Bonding system throughout
- Octoplex system with AC/DC distribution panels at three locations
- Shore power receptacle 100+50amp in transom w/cable master
- Phone jacks at MSR & salon
- Dimmers for salon and MSR sconces
- 24 Volt system
- Chain counter for anchor

Engine Room

- A-SEA transformer
- 30 KW and 25 KW NORTHERN LIGHTS generators.
- Heavy-duty batteries, 4 each AGM 8D batteries for engines, 4 AGM 8D batteries for house bank, AGM 4D battery for each generator
- Engine battery disconnect switch
- Battery paralleling system with control switch
- Service battery switch
- 4000W inverter/charger (pure sine wave)
- GFI reset in the main electrical panel
- Vimar switches and outlets
- 24V lights in all compartments
- Floodlights aft hardtop (1), aft boat deck (2)
- Polarity reverse indicating light
- Marine-grade, tinned copper wiring
- VOLT and AMP meters
- Navigation cellular amplifier (PowerMax DA4000SBR)
- Bonding system throughout
- Octoplex system with AC/DC distribution panels at three locations
- Shore power receptacle 100+50amp in transom w/cable master
- Phone jacks at MSR & salon
- Dimmers for salon and MSR sconces
- 24 Volt system
- Chain counter for anchor

Note

- Professional interior photos will be available April 15, 2015. Location will be Palm Harbor Marina, West Palm Beach, FL
- April 15, 2015: New bottom paint, wax top & sides
- Extended CAT/engine warranty 12 months

Exclusions

Owner's personal belongings.

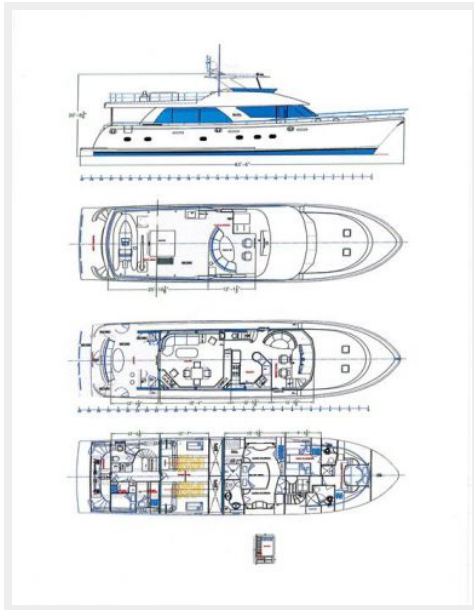
Disclaimer

The Company offers the details of this vessel or yacht in good faith but cannot guarantee or warrant the accuracy of this information nor warrant the condition of the vessel. A buyer should instruct his representatives, agents, or his surveyors, to investigate such details as the buyer desires validated. This vessel or yacht is offered subject to prior sale, price change, or withdrawal

without notice.

PHOTOS

Layout Drawings



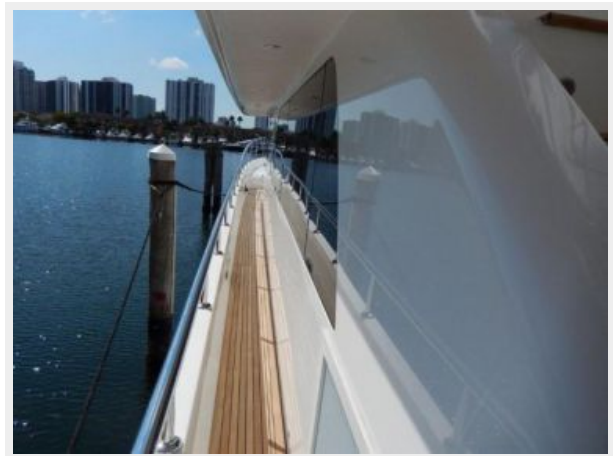
Bow Views



Anchor Views



Side Passageway



Salon



Salon



Salon



Salon



Salon



Lower Deck Helm



Lower Deck Helm - Galley



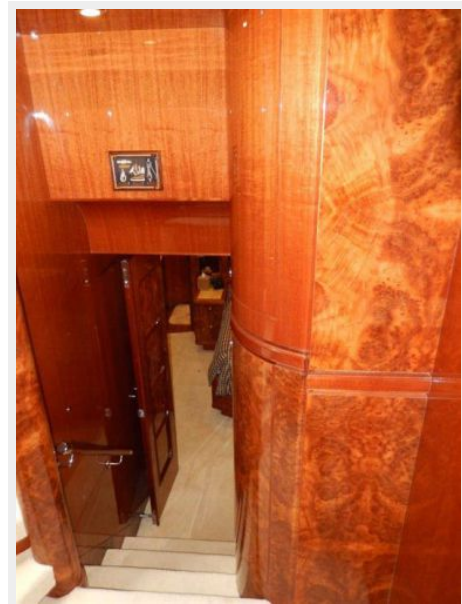
Galley



Passageway Salon to Galley



Stairs to Master Stateroom



Master Stateroom



Master Stateroom



Master Stateroom TV



Master Head



Master Head



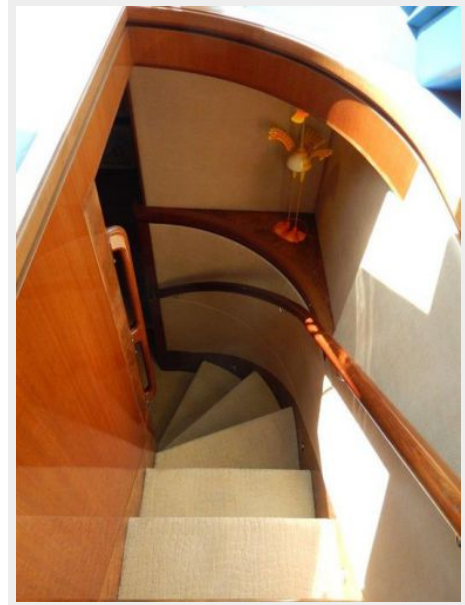
Guest Twin



Guest Twin



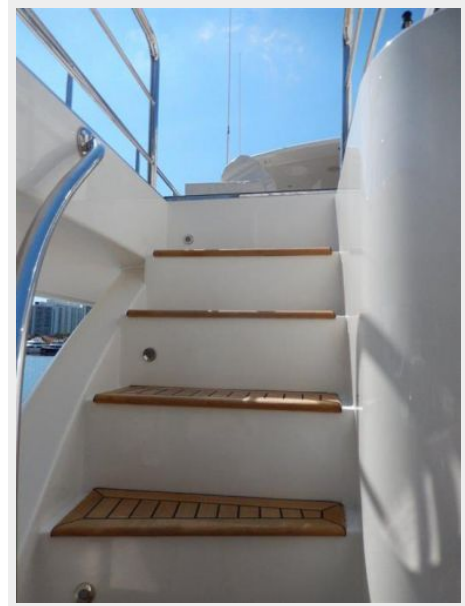
Stairso to Lower Deck



Lower Deck Landing



Stairs to Fly Bridge



Fly Bridge Helm



Fly Bridge Side Driving Station



Fly Bridge Seating



Fly Bridge Hot Tub



Tendor on Davit



Fly Bridge - Grill



Aft Deck



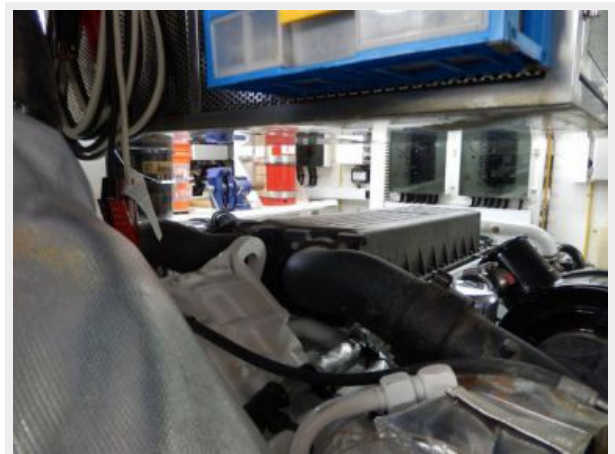
Aft Deck



Crew Quarters Head



Engine Room



Engine Room



Engine Room



CONTACTS

Andrey Shestakov, leading yacht broker of the sales department of Shestakov Yacht Sales Inc. Shestakov Yacht Sales Inc., the official representative of the Miami/Fort Lauderdale FL headquarters.

Contact details

Email: andrey@shestakovyachtsales.com

Web: shestakovyachtsales.com/en/

Telephones

USA: +1(954)274-4435

Office hours

Monday – Saturday: **9:00 - 21:00** EDT

Sunday: **closed**

Address



Harbour Towne Marina, 850 NE 3rd St,
STE 213, Dania, FL 33004