

## NO NAME — TIARA



**Builder:** TIARA

**Year Built:** 2009

**Model:** Motor Yacht

**Price:** PRICE ON APPLICATION

**Location:** United States

**LOA:** 41' 0" (12.50m)

**Beam:** 15' 0" (4.57m)

**Max Draft:** 3' 5" (1.04m)

**Cruise Speed:** 27 Kts. (31 MPH)

Our experienced yacht broker, Andrey Shestakov, will help you choose and buy a yacht that best suits your needs **NO NAME — TIARA** from our catalogue. Presently, at Shestakov Yacht Sales Inc., we have a wide variety of yachts available on our sale's list. We also work in close contact with all the big yacht manufacturers from all over the world.

If you would like to buy a yacht **NO NAME — TIARA** or would like help answering any questions concerning purchasing, selling or chartering a yacht, please call **+1(954)274-4435**

---

# TABLE OF CONTENTS

---

TABLE OF CONTENTS	2
SPECIFICATIONS	3
Overview	3
Basic Information	3
Dimensions	3
Speed, Capacities and Weight	3
Accommodations	3
Hull and Deck Information	4
Engine Information	4
DETAILED INFORMATION	5
Salon	5
Galley	5
Master Stateroom	6
Deck Equipment	6
Electronics	8
Engine Room	8
Exclusions	9
Disclaimer	9
PHOTOS	11
CONTACTS	16
Contact details	16
Telephones	16
Office hours	16
Address	16

---

# SPECIFICATIONS

---

## Overview

---

**The owner says sell NOW! His new boat has arrived and he does not want two boats at his dock to take care of. If you thought you wanted a clean, professionally maintained 39' Tiara, act now, all reasonable offers will be considered immediately!**

Exceptional 2009 Tiara Yacht 3900 Open, especially the price. The engines were just serviced, including heat exchangers and after cooling cleaning. Only 450 hours on the engines and only 575 hours on the generator.

Included are two Station TV, allowing for different viewing in the master cabin vs the salon. Two cockpit A/C units designed to keep the helm/bridge area cool. The cockpit includes a refrigerator, ice maker and even a freezer!

## Basic Information

---

**Category:** Motor Yacht

**Model Year:** 2009

**Year Built:** 2009

**Country:** United States

## Dimensions

---

**LOA:** 41' 0" (12.50m)

**Beam:** 15' 0" (4.57m)

**Max Draft:** 3' 5" (1.04m)

## Speed, Capacities and Weight

---

**Cruise Speed:** 27 Kts. (31 MPH)

**Fuel Capacity:** 535 Gallons

## Accommodations

---

**Total Cabins:** 1

---

## Hull and Deck Information

---

**Hull Material:** Fiberglass

## Engine Information

---

**Engines:** 2

**Manufacturer:** Cummings

**Model:** QSC 8.3

---

# DETAILED INFORMATION

---

## Salon

---

### Salon

- Custom teak hi-low table
- Teak entry steps with storage
- Subwoofer, interior & exterior speakers
- Sharp Flat Screen TV 26"
- Port holes (3)
- Convertible dinette & Pullman
- Stereo system with DVD/CD player
- Upper hullside cabinets (3)
- Marine Air conditioning, 16,000 BTU's

## Galley

---

### Galley

- Corian counter top
- Stainless steel sink
- Upper dish locker, 3 cabinets
- Two-burn Kenyon cook top
- Drawer style ref/freezer
- Drop in storage in corner of counter top
- Under counter storage & aft pantry
- Two utensil draws
- Panasonic Microwave

- Exhaust fan
- Trash bin storage

## Master Stateroom

---

### Master Stateroom

- Large queen berth with storage under assisted by gas rams
- 5 hull side cabinets
- Cedar lined hanging locker
- Private entrance to head/shower
- Large overhead hatch and window
- Indirect lighting
- Sliding entry door
- Air conditioning controls

## Deck Equipment

---

### Deck

- Pulpit and Lewmar windlass rode, chain & remote
- Windshield wipers and washers
- Bilge pumps (3)
- Engine room blower
- Navigation Lights & horn
- Gel coated bilge
- Six stainless steel cleats
- Tiara hinged helm console with drink holders
- Center line acrylic sliding door w/screen
- Port aft-facing mezzanine seat with ref/freezer

- 
- Cockpit shower
  - Intra cockpit LED courtesy lights
  - Two insulated flush floor storage boxes
  - Molded in transom gate & swim platform
  - Starboard side tackle draws
  - Hard Top Cruising Style, skylight & opening hatch
  - Underwater lights
  - Trim Tabs
  - Fiberglass hard top with hatch & lights
  - Spreader lights
  - Tiara custom diamond pattern non-skid
  - One-piece welded bow rail
  - Tiara custom composite windshield
  - Tracey Adjustable helm chair
  - Port L-lounge w/swivel seat fwd facing
  - Hydraulic engine room hatch & day hatch
  - Cockpit coaming padding
  - Fresh & raw water wash dow
  - Aft lazarette hatch
  - L-lounge, aft CP seats & custom teak table
  - L-lounge, upped CP w/teak table swivel seat
  - Wet bar & under counter refrigerator
  - Rod holders (4) flush mount

## Electronics

- (2) Raymarine Displays:

- Chart Plotter
- GPS
- Radar
- Depth
- Raymarine ST-70 Depth Finder
- Raymarine Auto-Pilot
- Raymarine VHF
- (2) Smartcraft Engine Displays
- ACR Spotlight

## Electronics

---

### Electronics

- (2) Raymarine Displays:
- Chart Plotter
- GPS
- Radar
- Depth
- Raymarine ST-70 Depth Finder
- Raymarine Auto-Pilot
- Raymarine VHF
- (2) Smartcraft Engine Displays
- ACR Spotlight

## Engine Room

---

### Engine Room



- Onan 9 KW Generator
- Victron battery charger
- Battery Parallel system & bonding system
- Hydraulic steering
- Racor fuel water separators
- Engine room lights 12 Volt
- Composite fuel tanks
- Fire extinguisher system FE-241 auto/manual
- Water heater
- 12 volt Dc and 120 Volt AC electrical systems
- One (1) 240 volt 65shore cord and cable recoiler
- Cable TV and dock side water
- Two banks of 12 Batteries
- Reverse polarity indicator
- Water cooled shaft logs
- Electric engine hatch lifters
- Raw water intake strainers
- Holding tank & pump out
- Freshwater tank 120 gals & pump

## **Exclusions**

---

Owner's personal belongings.

## **Disclaimer**

---

The Company offers the details of this vessel or yacht in good faith but cannot guarantee or

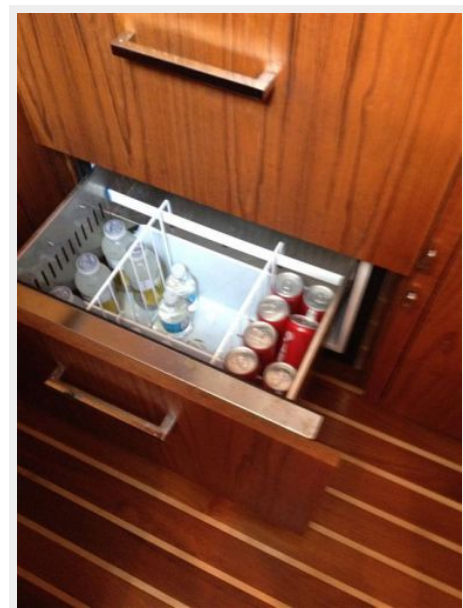
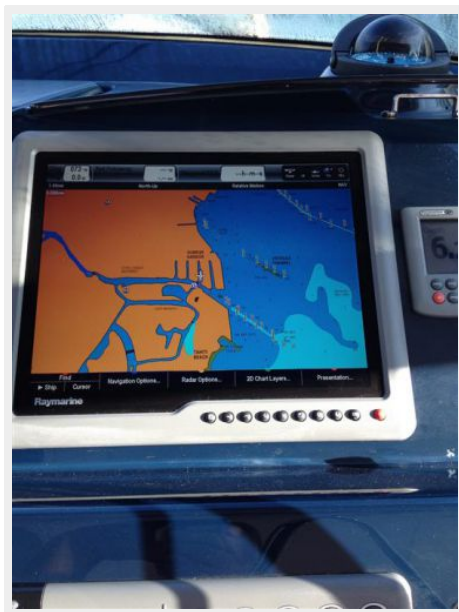
warrant the accuracy of this information nor warrant the condition of the vessel. A buyer should instruct his representatives, agents, or his surveyors, to investigate such details as the buyer desires validated. This vessel or yacht is offered subject to prior sale, price change, or withdrawal without notice.

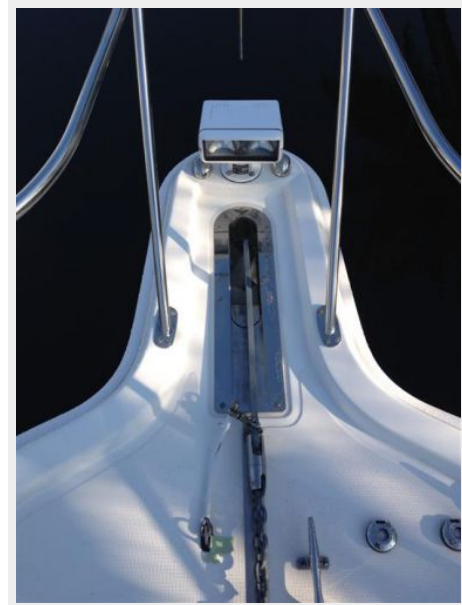
# PHOTOS











---

# CONTACTS

---

Andrey Shestakov, leading yacht broker of the sales department of Shestakov Yacht Sales Inc. Shestakov Yacht Sales Inc., the official representative of the Miami/Fort Lauderdale FL headquarters.

---

## Contact details

---

Email: [andrey@shestakovyachtsales.com](mailto:andrey@shestakovyachtsales.com)

Web: [shestakovyachtsales.com/en/](http://shestakovyachtsales.com/en/)

---

## Telephones

---

USA: +1(954)274-4435

---

## Office hours

---

Monday – Saturday: **9:00 - 21:00** EDT

Sunday: **closed**

---

## Address

---



Harbour Towne Marina, 850 NE 3rd St,  
STE 213, Dania, FL 33004