

JABO — GRAND BANKS



Builder: GRAND BANKS

Year Built: 1970

Model: Trawler

Price: PRICE ON APPLICATION

Location: United States

LOA: 46' 0" (14.02m)

Beam: 14' 4" (4.37m)

Max Draft: 4' 9" (1.45m)

Cruise Speed: 9 Kts. (10 MPH)

Max Speed: 11 Kts. (13 MPH)

Our experienced yacht broker, Andrey Shestakov, will help you choose and buy a yacht that best suits your needs **Jabo — GRAND BANKS** from our catalogue. Presently, at Shestakov Yacht Sales Inc., we have a wide variety of yachts available on our sale's list. We also work in close contact with all the big yacht manufacturers from all over the world.

If you would like to buy a yacht **Jabo — GRAND BANKS** or would like help answering any questions concerning purchasing, selling or chartering a yacht, please call **+1(954)274-4435**

TABLE OF CONTENTS

TABLE OF CONTENTS	2
SPECIFICATIONS	4
Basic Information	4
Dimensions	4
Speed, Capacities and Weight	4
Accommodations	4
Hull and Deck Information	4
Engine Information	5
DETAILED INFORMATION	6
Additional Information	6
Exclusions	6
Disclaimer	6
PHOTOS	7
Port Profile	7
Stern Profile	7
Forward Berth	7
At dockage in Tennessee	7
Forward Berth #2	8
Forward Berth #3	8
Forward Head	8
Master Stateroom Berth	8
Master Stateroom Head	9
Upper Helm	9
View from Galley forward	9
Rowboat	9
Electrical Panel	10
Lower Helm	10
Galley	10

Galley #2	10
Salon	11
Salon, TV	11
Engine Room	11
Engine Room #2	11
Ford Lehman's	12
Transom	12
CONTACTS	13
Contact details	13
Telephones	13
Office hours	13
Address	13

SPECIFICATIONS

Basic Information

Category: Trawler

Model Year: 1970

Year Built: 1970

Country: United States

Dimensions

LOA: 46' 0" (14.02m)

Beam: 14' 4" (4.37m)

Max Draft: 4' 9" (1.45m)

Speed, Capacities and Weight

Cruise Speed: 9 Kts. (10 MPH)

Cruise Speed RPM: 1800 Kts.

Max Speed: 11 Kts. (13 MPH)

Water Capacity: 400 Gallons

Holding Tank: 50 Gallons

Fuel Capacity: 800 Gallons

Accommodations

Total Cabins: 2

Total Berths: 5

Total Heads: 2

Hull and Deck Information

Hull Material: Wood

Engine Information

Engines: 2

Manufacturer: Ford Lehman

Engine Type: Inboard

Fuel Type: Diesel

DETAILED INFORMATION

Additional Information

- 100% Freshwater Grand Banks
- Refit in 2002
- Twin Ford Lehman's - 800 hours since rebuild
- Mahogany over Teak frame
- Surveyed Excellent in 2012
- Northern Lights 8.5 kW genset with 200 hours
- Flagship Marine 28,500 BTU Reverse cycle A/C

Exclusions

Owner's personal belongings.

Disclaimer

The Company offers the details of this vessel or yacht in good faith but cannot guarantee or warrant the accuracy of this information nor warrant the condition of the vessel. A buyer should instruct his representatives, agents, or his surveyors, to investigate such details as the buyer desires validated. This vessel or yacht is offered subject to prior sale, price change, or withdrawal without notice.

PHOTOS

Port Profile



Stern Profile



Forward Berth



At dockage in Tennessee



Forward Berth #2



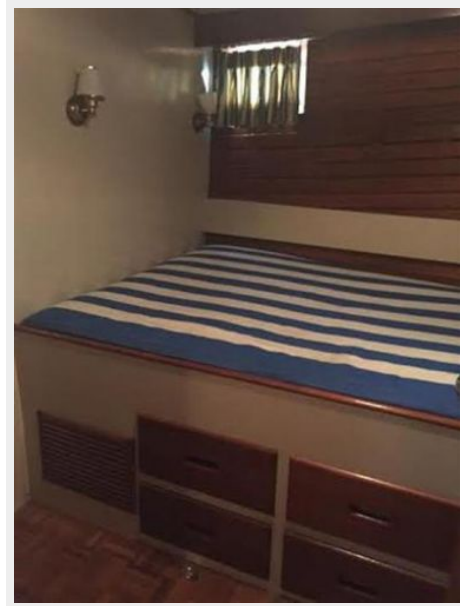
Forward Berth #3



Forward Head



Master Stateroom Berth



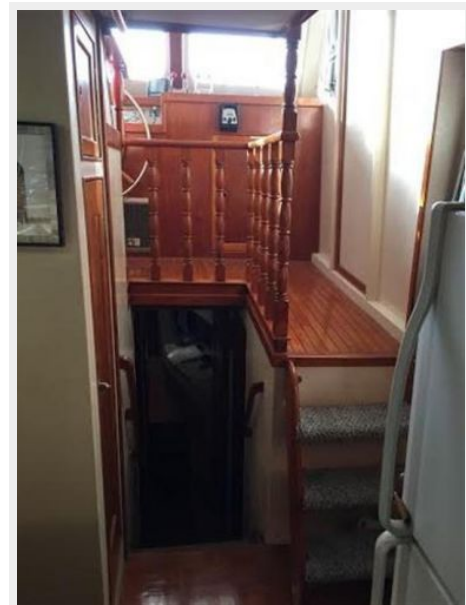
Master Stateroom Head



Upper Helm



View from Galley forward



Rowboat



Electrical Panel



Lower Helm



Galley



Galley #2



Salon



Salon, TV



Engine Room



Engine Room #2



Ford Lehman's



Transom



CONTACTS

Andrey Shestakov, leading yacht broker of the sales department of Shestakov Yacht Sales Inc. Shestakov Yacht Sales Inc., the official representative of the Miami/Fort Lauderdale FL headquarters.

Contact details

Email: andrey@shestakovyachtsales.com

Web: shestakovyachtsales.com/en/

Telephones

USA: +1(954)274-4435

Office hours

Monday – Saturday: **9:00 - 21:00** EDT

Sunday: **closed**

Address



Harbour Towne Marina, 850 NE 3rd St,
STE 213, Dania, FL 33004